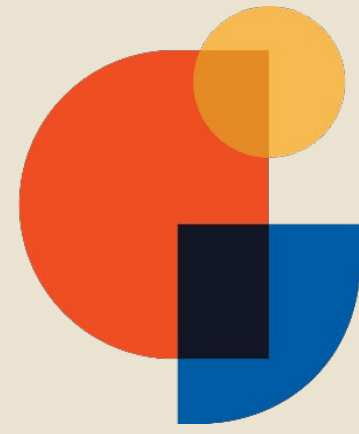


gilbert

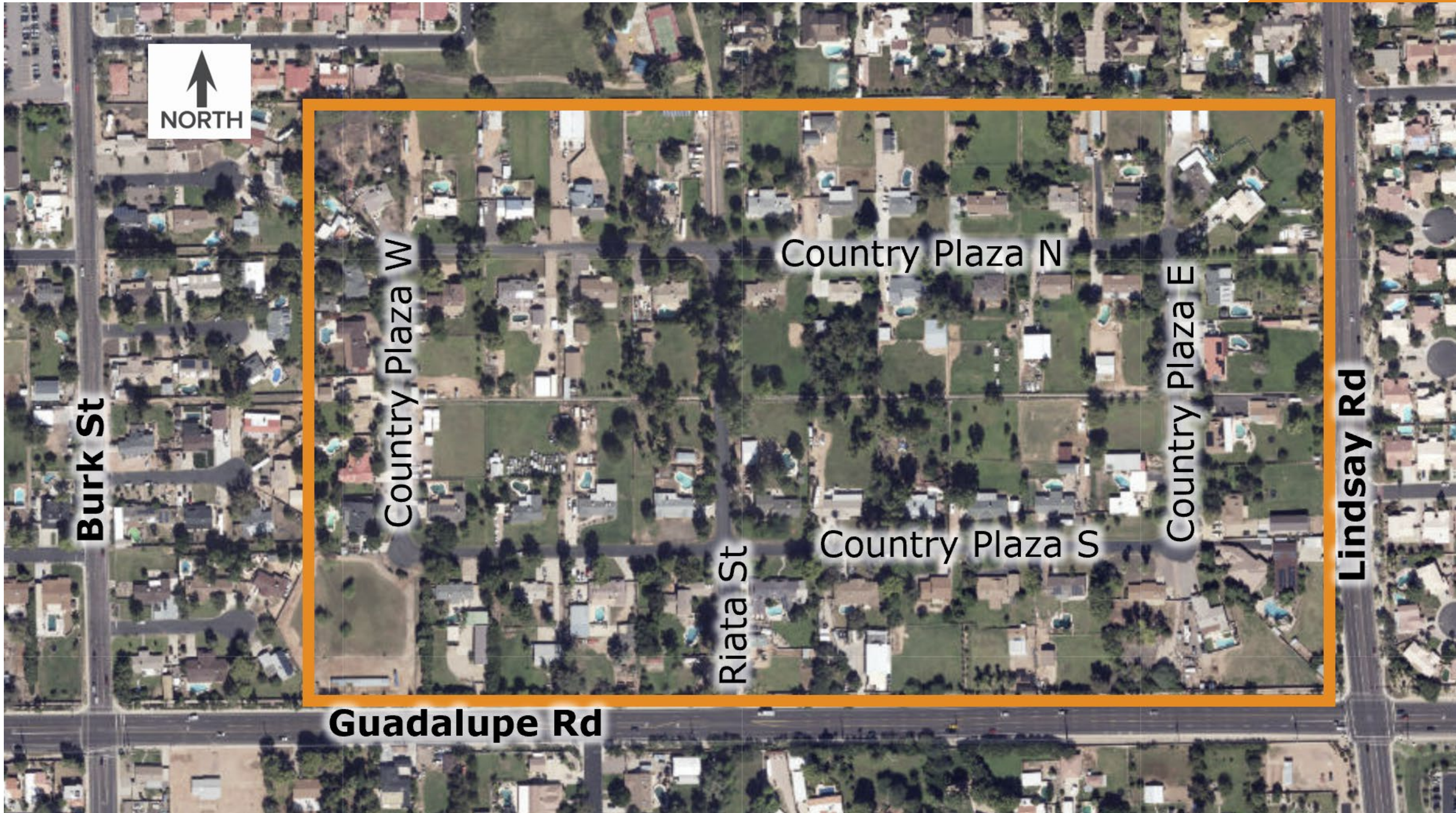


February 2024

College Park Country Estates
Landscape Maintenance
Neighborhood Meeting
February 7, 2024

- Introductions
- Landscape Maintenance Background
- Landscape Maintenance Challenges
- Responsibilities
- Options
- Future Landscape Maintenance
- Next Steps

Agenda



College Park Country Estates

Landscape Maintenance Background

- College Park Country Estates homes were built in the mid to late 1970's
- With nearly 50 years of growth in some instances, there are many mature trees in the area that require ongoing maintenance
- To date, Gilbert Streets has maintained the approximate 40 trees in College Park Country Estates along Riata Street and Country Plaza

Approx. 40 Trees Gilbert Maintains

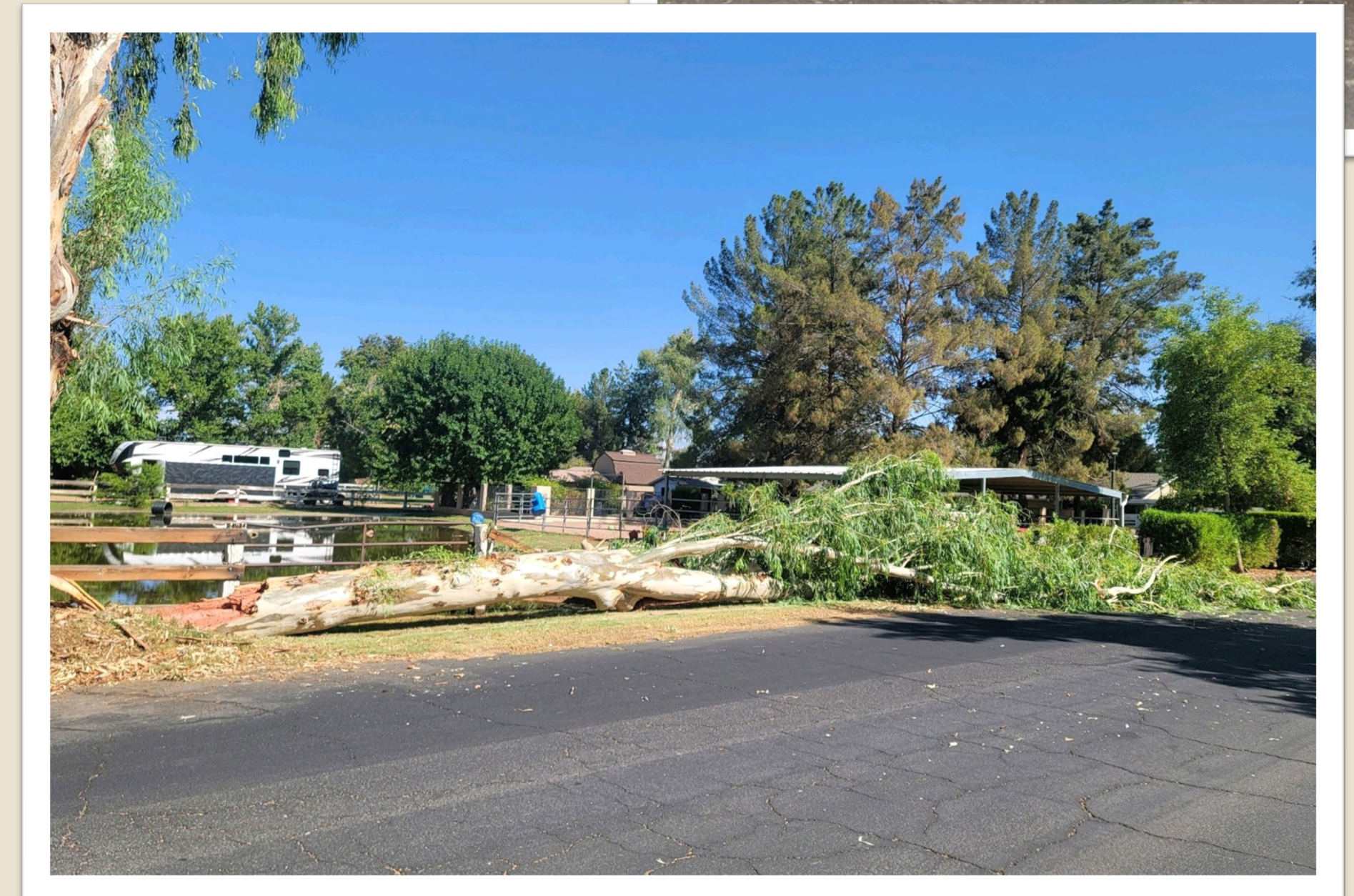
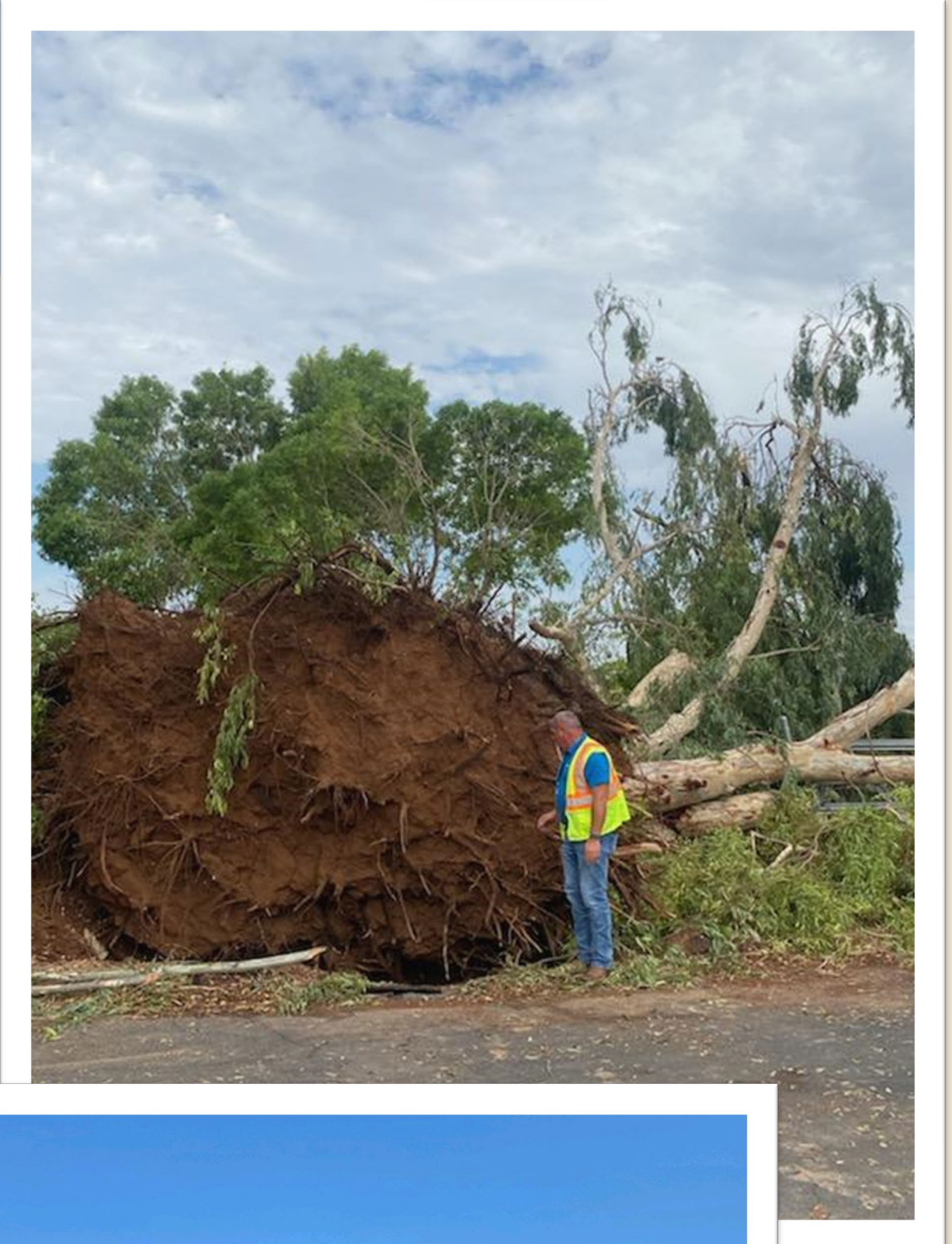




Large Mature Trees

Landscape Maintenance Challenges

- Large, mature trees can create issues or result in risks to safety for nearby residents and structures
- Gilbert Code for Landscape Maintenance assigns responsibility for landscape maintenance to the adjacent property owner



Landscape Maintenance Responsibility

Gilbert Unified Land Development Code 4.306: Landscape Maintenance and Enforcement:

Maintenance of landscaping in the right-of-way shall be the responsibility of the adjacent property owner, whether an individual, corporation, property owners association or homeowners association.

Why Are We Here?

- Gilbert Streets works to maximize resources to maintain many areas of arterial roadway with landscape and hardscape, to provide a greater overall benefit to its residents.
- This is the sole remaining residential area for which Gilbert maintains landscape on internal streets.
- This is the first step in transferring responsibility for College Park Country Estates landscape maintenance to its residents.

What are the Options?

- 1. Form a PKID (Parkway Improvement District) for Landscape Maintenance**
- 2. Individual Resident Responsibility**

1. Form a PKID (Parkway Improvement District) for Landscape Maintenance

Gilbert can work with the neighborhood to establish an improvement district wherein each property is assessed with a property tax to specifically fund landscape maintenance for the neighborhood, which would include the arterial frontage as well.

Neighborhood Responsibility

2. Individual Property Owner Responsibility:

If a PKID is not formed, the Town Code will be enforced, requiring each property owner to maintain the adjacent right-of-way.

Individual Property Owner Responsibility

- Gilbert will be removing all eucalyptus trees that have been identified as a hazard. A total of 9 trees will be removed immediately.
- Gilbert will continue maintaining remaining trees in the right-of-way until June 30, 2027, unless a PKID is formed.
- As of June 30, 2027, any remaining trees will be subject to Town Code.

Future Landscape Maintenance

Tree Inventory



- ✓ **Green Dots indicate Trees (~40) Currently Maintained by Gilbert**
- ✓ **Eucalyptus Trees indicate Eucalyptus Trees (9) to be Removed**

Next Steps

- Determine the desire for a PKID.
- Following the meeting, a formal letter notification from Gilbert to property owners and residents.
- Gilbert will remove 9 eucalyptus trees.
- Gilbert will maintain remaining trees until June 30, 2027 or a PKID is formed.
- On June 30, 2027, if no PKID is formed, Gilbert will offer a one-time courtesy removal for residents not willing to maintain adjacent trees, if not, the Town Code will be enforced.

Questions?

Visit us on the web: www.gilbertaz.gov

Search “College Park Country Estates”



Project Information: 480.898.4090

