



## NOTICE OF ADMINISTRATIVE DECISION

June 28, 2018

Karl Gredler  
Signline  
127 W. Juanita Ave, Suite 106  
Mesa, AZ 85210  
[karl@signlineusa.com](mailto:karl@signlineusa.com)

RE: Administrative Design Review **DR13-11-S (PDR-2018-00100)**.

Dear Mr. Gredler:

Staff has reviewed and **approved** your Administrative Design Review **DR13-11-S (PDR-2018-00100)** for an amendment to the existing Comprehensive Sign Plan (CSP) for Scrapbook.com, located at 1495 E. Baseline Road just southeast of Williams Field Road. The subject site is zoned Business Park (BP).

A summary of the amendment to the existing CSP for Scrapbook.com is listed below:

- Allow sign envelopes to be combined or separate based on leased space as shown in the CSP providing the sign fits proportionally with building massing and architectural features of the elevation.

Staff has **approved** your request with the following conditions:

1. All signs will meet the CSP and obtain a sign permit from The Town of Gilbert prior to installation.

If you have any questions regarding these findings, please contact me at (480) 503-6563.

Sincerely,

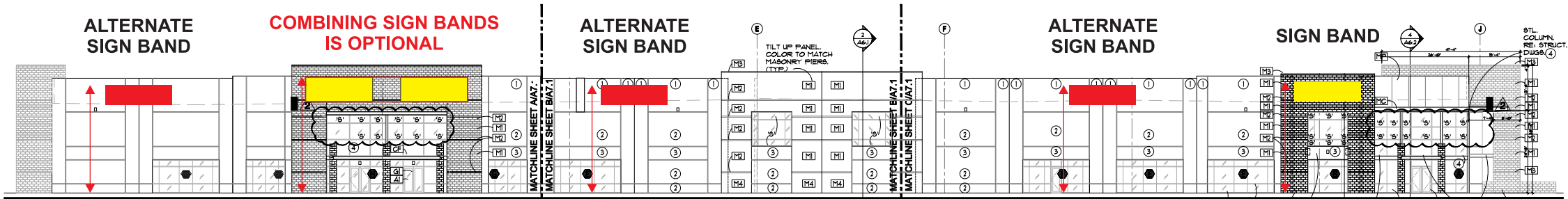
A handwritten signature in blue ink that reads "Dana Stevens".

Dana Stevens  
Planning Specialist  
Town of Gilbert

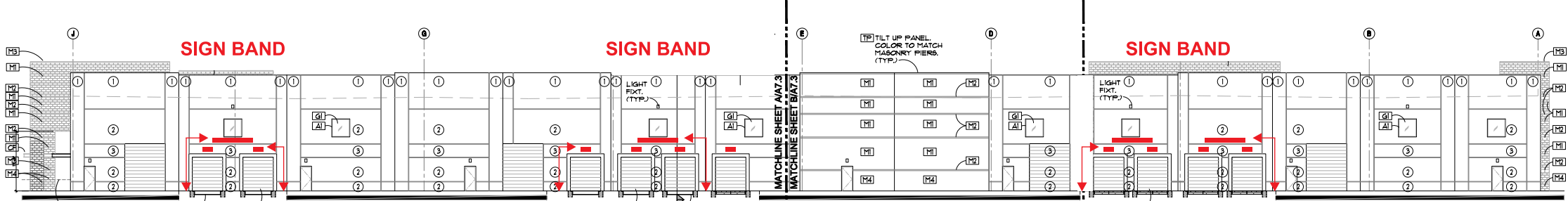
PDR-2018-00100 (DR13-11-S-A) Scrapbook.com - Amend CSP - 2nd Review  
SEC Baseline & Monterrey  
Minor Admin DR  
Planner: Dana Stevens

Approved - Planning

Dana Stevens  
Planning Specialist  
480-503-6563

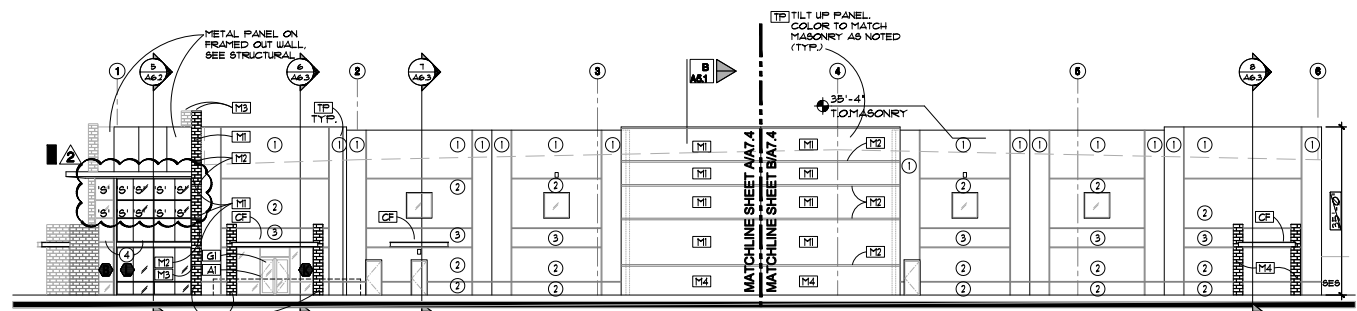


32' HEIGHT FROM FINISH FLOOR TO TOP OF SIGN    33' HEIGHT FROM FINISH FLOOR TO TOP OF SIGN    32' HEIGHT FROM FINISH FLOOR TO TOP OF SIGN    32' HEIGHT FROM FINISH FLOOR TO TOP OF SIGN    33' HEIGHT FROM FINISH FLOOR TO TOP OF SIGN    **NORTH ELEVATION**  
 Scale: 1" = 40'-0"



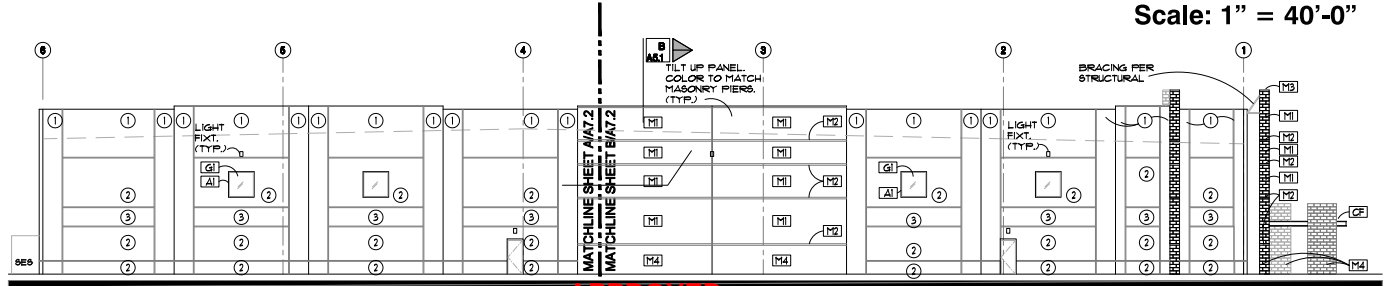
15'-6" HEIGHT FROM FINISH FLOOR TO TOP OF SIGN    13' HEIGHT FROM FINISH FLOOR TO TOP OF SIGN    13' HEIGHT FROM FINISH FLOOR TO TOP OF SIGN    15'-6" HEIGHT FROM FINISH FLOOR TO TOP OF SIGN    13' HEIGHT FROM FINISH FLOOR TO TOP OF SIGN    15'-6" HEIGHT FROM FINISH FLOOR TO TOP OF SIGN    **SOUTH ELEVATION**  
 Scale: 1" = 40'-0"

**NO SIGN BANDS ON WEST ELEVATION**



**WEST ELEVATION**  
 Scale: 1" = 40'-0"

**NO SIGN BANDS ON EAST ELEVATION**



**EAST ELEVATION**  
 Scale: 1" = 40'-0"

**APPROVED**  
 Minor Administrative Design Review  
 Case # PDR-2018-00100  
 Date 6/28/2018

## 1495 E. Baseline Road - Gilbert, Arizona

EACH BUSINESS SHALL BE PERMITTED A MINIMUM WALL SIGN AREA OF 1.5 S.F. PER LINEAR BUSINESS FRONTAGE, NOT TO EXCEED SIZE OF SIGN BAND / MULTIPLE SIGN BANDS CAN BE COMBINED DEPENDING ON THE LEASED SPACE / SIGN MUST BE PLACED ON ACTUAL LEASED FRONTAGE ON SIGN BAND OVER ENTRANCE OR ON ALTERNATE SIGN BAND

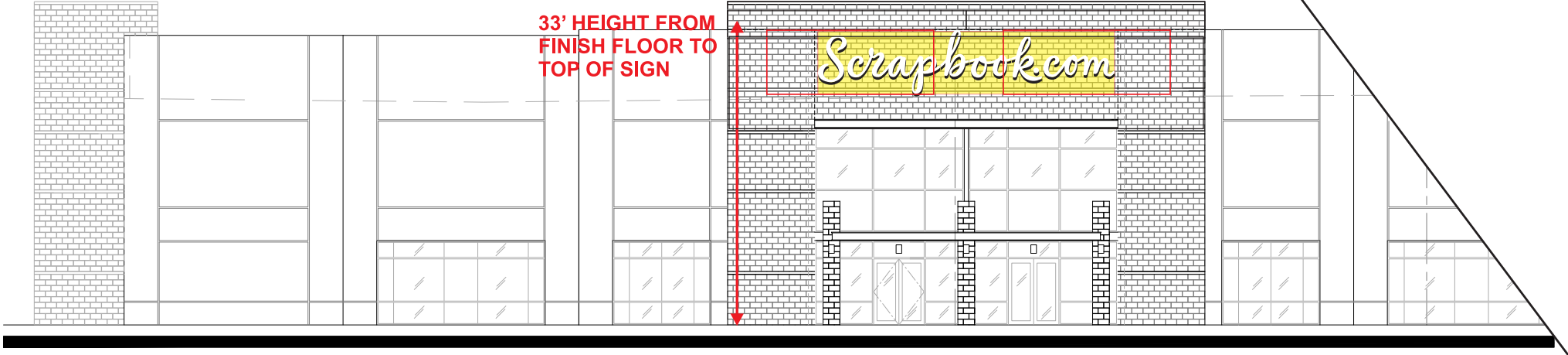
**TYPICAL ILLUMINATED SIGNAGE ALLOWED:**  
 3" OR 5" DEEP ALUMINUM PAN CHANNEL LETTERS / ACRYLIC FACES / RETURNS AND TRIM CAP TO MATCH CORPORATE COLORS / ILLUMINATED WITH LED'S / UL LABELED AND CERTIFIED

**TYPICAL NON-ILLUMINATED SIGNAGE ALLOWED:**  
 MINIMUM 2" DEEP INDIVIDUAL ALUMINUM REVERSE PAN CHANNEL LETTERS AND LOGOS PAINTED PER CORPORATE COLORS

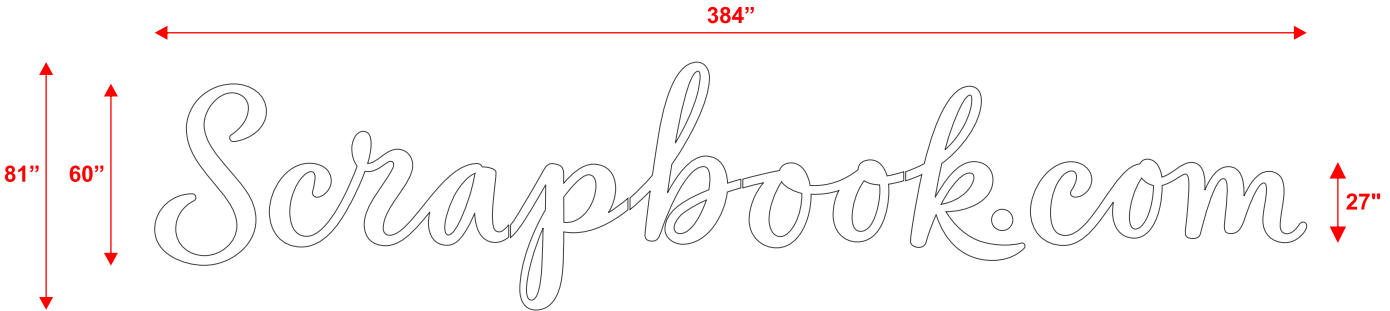
**TYPICAL SIGNAGE ALLOWED FOR ROLL-UP DOORS (SOUTH ELEVATION):**  
 12" TALL x 1" DEEP INJECTION MOLDED PLASTIC LETTERS AND NUMBERS

**NEW PROPOSED SIGN BAND  
COMBINING (2) SIGN BANDS**

**33' HEIGHT FROM  
FINISH FLOOR TO  
TOP OF SIGN**



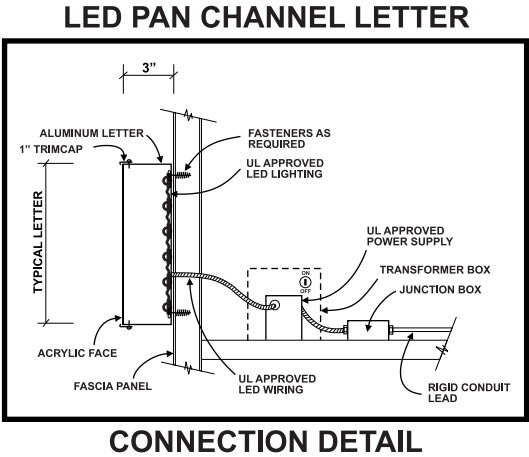
**NORTH ELEVATION:  
Scale: 1/16" = 1'-0"**



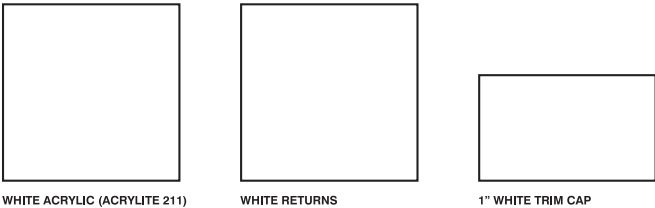
**Scale: 3/16" = 1'-0"**

3" DEEP ALUMINUM PAN CHANNEL LETTERS WITH WHITE RETURNS /  
WHITE ACRYLIC FACES WITH WHITE TRIM CAP /  
ILLUMINATED WITH WHITE LED'S / UL LABELED AND CERTIFIED

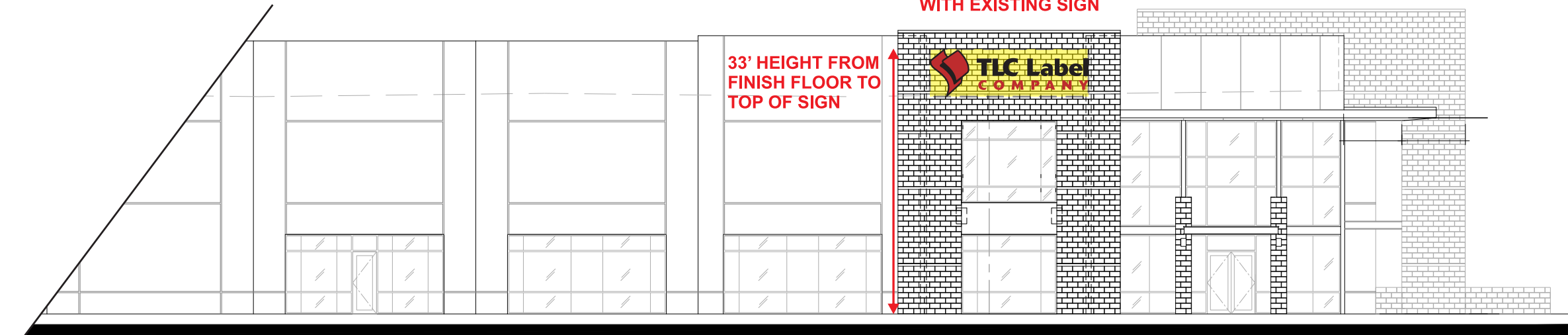
**81" x 384" = 216 S.F.**



**MATERIALS FOR ILLUMINATED SIGN:**



**APPROVED**  
Minor Administrative Design Review  
Case # PDR-2018-00100  
Date 6/28/2018



APPROVED SIGN BAND  
WITH EXISTING SIGN

33' HEIGHT FROM  
FINISH FLOOR TO  
TOP OF SIGN



NORTH ELEVATION:  
Scale: 1/16" = 1'-0"



**APPROVED**  
Minor Administrative Design Review  
Case # PDR-2018-00100  
Date 6/28/2018

20'-0" x 6'-0" = 120 S.F.

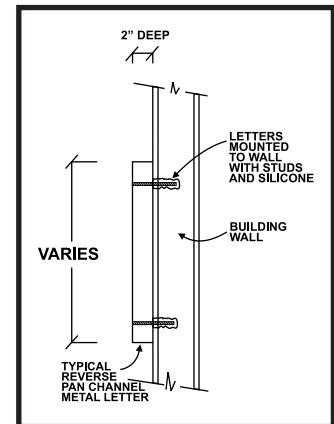
SIGN DETAIL:  
Scale: 1/4" = 1'-0"

26" TALL x 2" DEEP ALUMINUM REVERSE PAN  
CHANNEL LETTERS PAINTED BLACK PER  
CORPORATE COLORS / NON-ILLUMINATED

15" TALL x 2" DEEP ALUMINUM REVERSE PAN  
CHANNEL LETTERS PAINTED RED PER  
CORPORATE COLORS / NON-ILLUMINATED

72" TALL x 2" DEEP ALUMINUM REVERSE PAN  
WITH VINYL GRAPHIC DETAIL /  
NON-ILLUMINATED

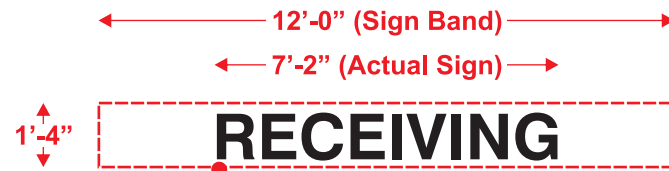
REVERSE PAN CHANNEL  
METAL LETTERS



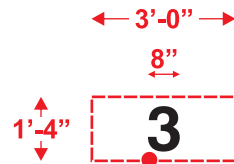
CONNECTION DETAIL



**SOUTH ELEVATION:**  
Scale: 1/16" = 1'-0"

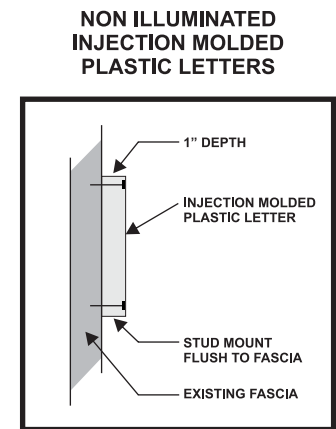


12" TALL x 1" DEEP BLACK INJECTION MOLDED  
PLASTIC LETTERS /  
12" x 86" = 7.17 SF



12" TALL x 1" DEEP BLACK INJECTION  
MOLDED PLASTIC NUMBERS /  
12" x 8" = .67 SF

**APPROVED**  
Minor Administrative Design Review  
Case # PDR-2018-00100  
Date 6/28/2018



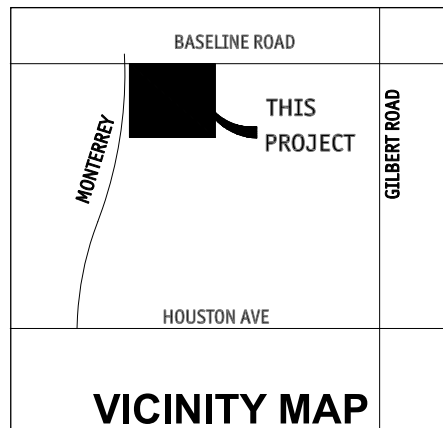
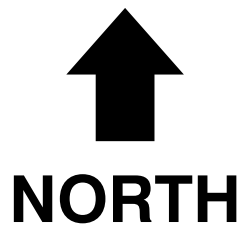
CONNECTION DETAIL

**SIGN DETAIL:**  
Scale: 1/4" = 1'-0"

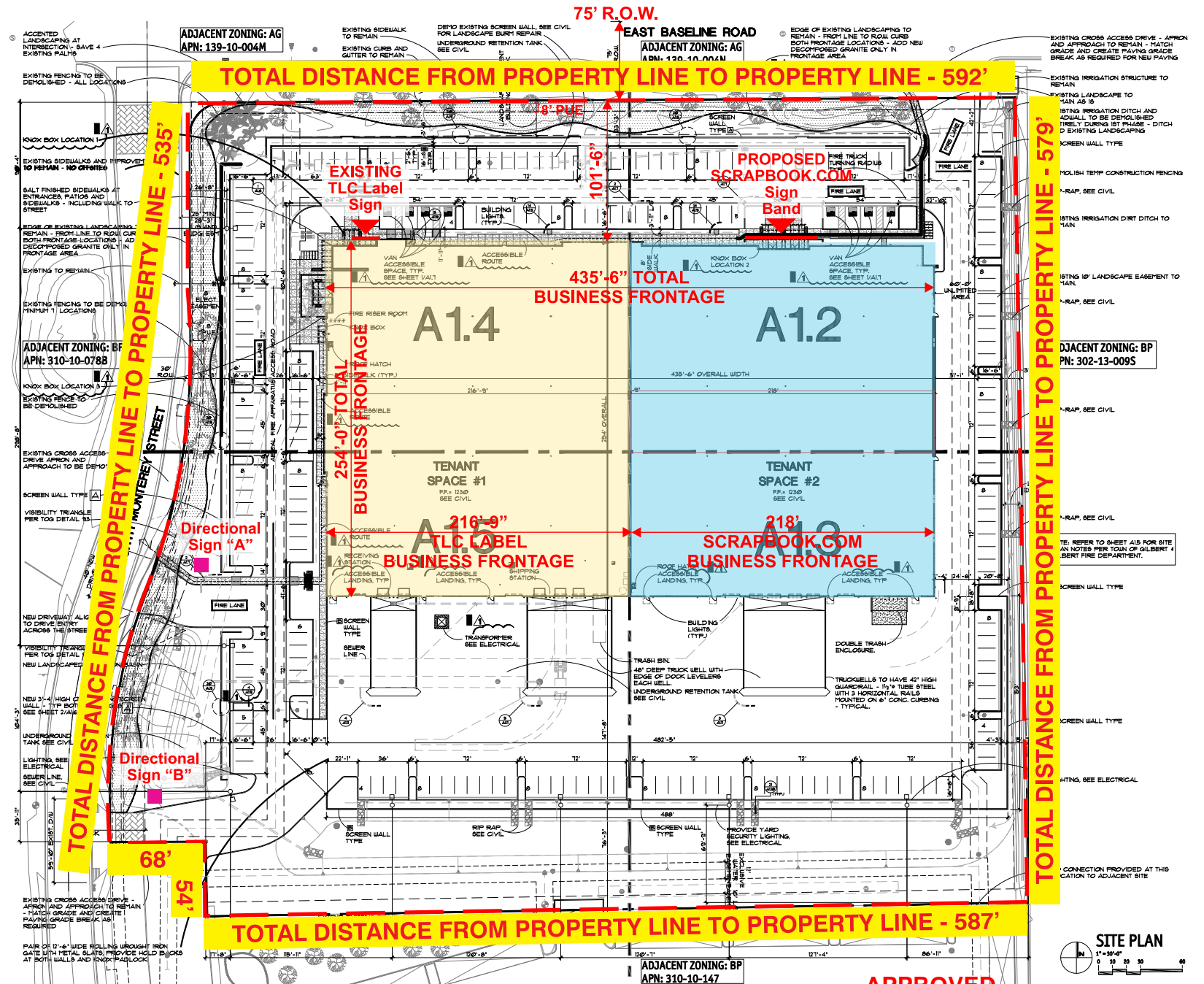
# EXTERIOR SIGN MATRIX

▲ Wall Signs

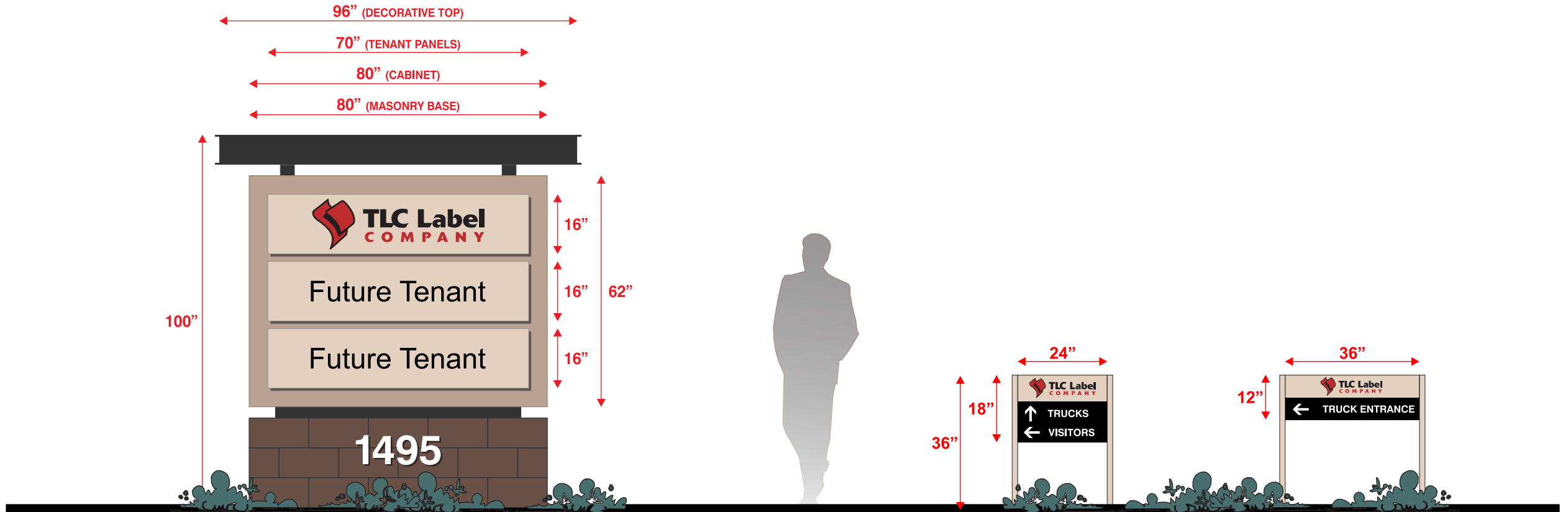
■ Directional Signs



● Site Map  
Scale: 1" = 100' - 0"



**APPROVED**  
Minor Administrative Design Review  
Case # PDR-2018-00100  
Date 6/28/2018



**MONUMENT SIGN:**

62" x 80" x 16" DEEP ALUMINUM CABINET WITH TEXTURED FINISH PAINTED "DUNN EDWARDS DE6123 TRAIL DUST" TO MATCH BUILDING / INTERNALLY ILLUMINATED WITH H/O FLUORESCENT LAMPS / DECORATIVE TOP FABRICATED I-BEAM PAINTED MATTE BLACK TO MATCH BUILDING DETAIL / (3) 16" x 70" x 2" DEEP TENANT PANELS PAINTED "DUNN EDWARDS DE6129 RUSTIC TAUPE" ARE ROUTED OUT AND BACKED WITH WHITE ACRYLIC WITH TRANSLUCENT VINYL OVERLAY PER CORPORATE COLORS / MASONRY BASE TO BLEND WITH BUILDING SPLIT-FACE BLOCK "PURPLE HAZE" / 8" TALL INJECTION MOLDED PLASTIC ADDRESS NUMBERS

**Monument Sign**

**DIRECTIONAL POST & PANEL SIGN:**

18" x 24" ALUMINUM PANEL  
 INSTALLED ON 36" TALL POSTS  
 PAINTED WHITE

**Directional Sign "A"**

**DIRECTIONAL POST & PANEL SIGN:**

12" x 36" ALUMINUM PANEL  
 INSTALLED ON 36" TALL POSTS  
 PAINTED WHITE

**Directional Sign "B"**

Scale: 3/8" = 1'-0"

**APPROVED**  
 Minor Administrative Design Review  
 Case # PDR-2018-00100  
 Date 6/28/2018



# MATERIALS - TLC LABEL SIGNAGE

## MATERIALS FOR NON-ILLUMINATED SIGNS:



RED VINYL GRAPHICS /  
RED

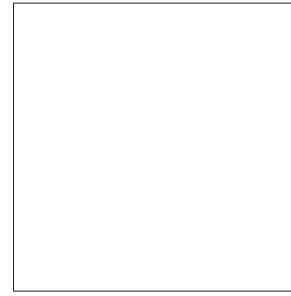


MATTHEWS ACRYLIC  
POLYURETHANE /  
BLACK ANODIC 41-335

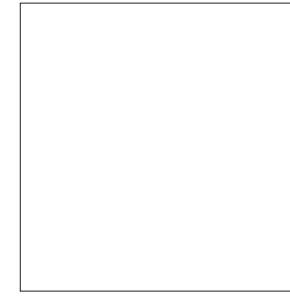


MATTHEWS ACRYLIC  
POLYURETHANE /  
RED

## MATERIALS FOR ILLUMINATED SIGNS:



WHITE ACRYLIC



WHITE RETURNS



1" WHITE TRIM CAP



**APPROVED**  
Minor Administrative Design Review  
Case # PDR-2018-00100  
Date 6/28/2018

# MATERIALS - TLC LABEL SIGNAGE

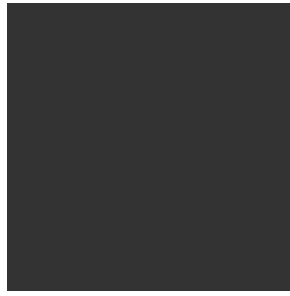
## MATERIALS FOR MONUMENT SIGN:



ALUMINUM PAINTED  
DUNN EDWARDS DE 6123  
"TRAIL DUST"



ALUMINUM PAINTED  
DUNN EDWARDS DE 6129  
"RUSTIC TAUPE"



MATTHEWS ACRYLIC  
POLYURETHANE /  
MATTE BLACK

## MATERIALS FOR DIRECTIONAL SIGNS:



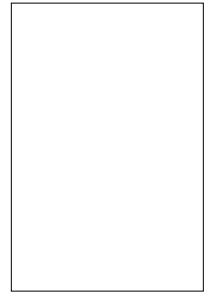
ALUMINUM PAINTED  
DUNN EDWARDS DE 6129  
"RUSTIC TAUPE"



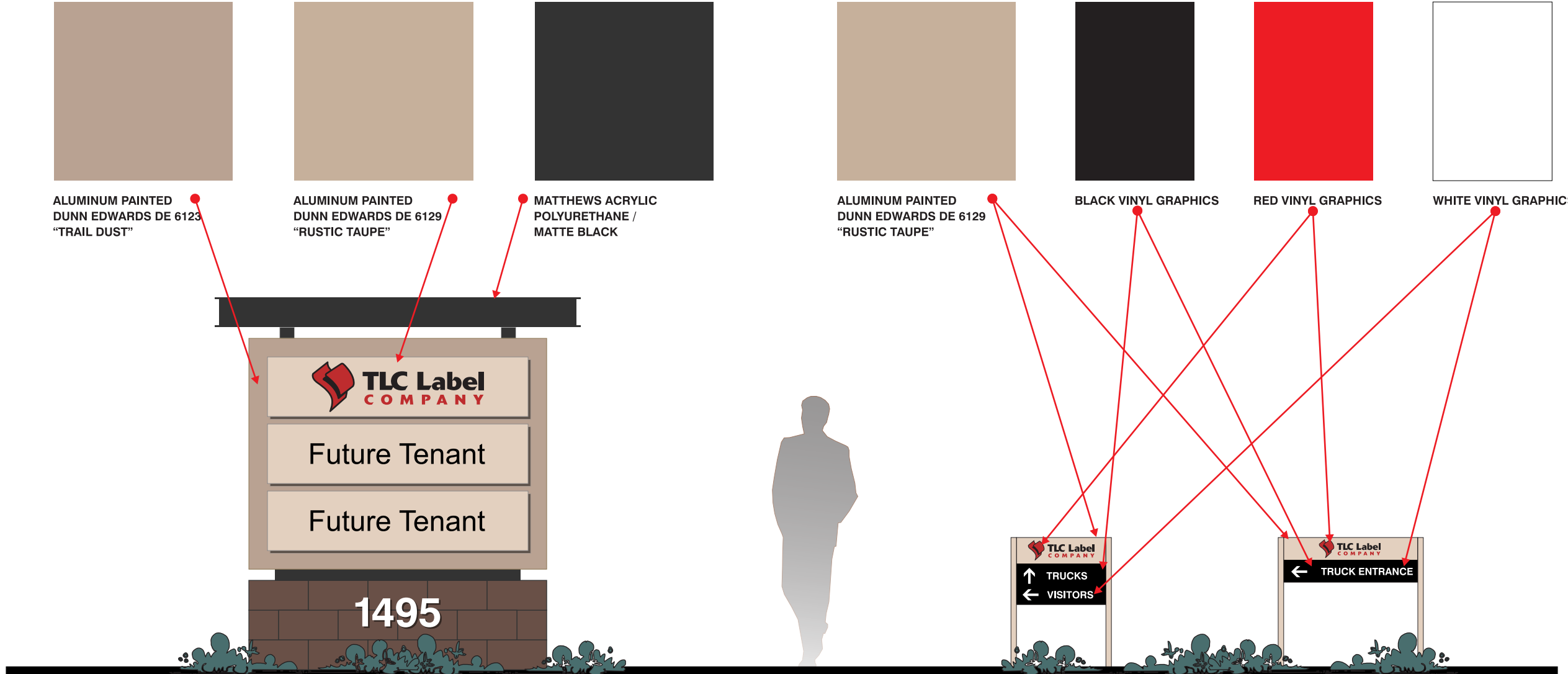
BLACK VINYL GRAPHICS



RED VINYL GRAPHICS



WHITE VINYL GRAPHICS



**APPROVED**  
Minor Administrative Design Review  
Case # PDR-2018-00100  
Date 6/28/2018