

Helpful Hints

- Read and understand the AZPDES Construction General Permit
- Become familiar with local ordinances and requirements
- Minimize disturbed areas
- Phase construction activity
- Control stormwater flowing onto the project
- Stabilize soils promptly
- Protect slopes from erosion
- Protect storm drain inlets and drywells
- Establish perimeter controls
- Protect receiving waters adjacent to the site
- Retain sediment on-site
- Establish stabilized ingress/egress areas
- Clean-up trackout debris immediately
- Inspect and maintain BMPs regularly
- Provide for waste management and keep the site free of litter
- Properly store and handle materials that may become stormwater pollutants
- Ensure that non-stormwater discharges are contained and controlled
- Establish a spill prevention and response plan and clean-up spills immediately
- Provide training to staff and subcontractors
- Retain all pertinent documents associated with the site for at least 3 years from the date the NOT was submitted to ADEQ



***Keeping stormwater clean
and protecting our washes is a job
for all of us***

***ALL OF US ARE WORKING TO PREVENT
STORMWATER POLLUTION***

Arizona Department of Transportation

City of Apache Junction

City of Avondale

City of Chandler

City of El Mirage

City of Glendale

City of Goodyear

City of Litchfield Park

City of Mesa

City of Peoria

City of Phoenix

City of Scottsdale

City of Surprise

City of Tempe

City of Tolleson

Flood Control District of Maricopa County

Luke Air Force Base

Maricopa County

Salt River Pima-Maricopa Indian Community

Town of Fountain Hills

Town of Gilbert

Town of Guadalupe

Town of Paradise Valley



STormwater
Outreach for
Regional
Municipalities



**STORMWATER
POLLUTION
PREVENTION
FOR
CONSTRUCTION
SITES**



For more information, visit:

STormwater Outreach for
Regional Municipalities
<http://www.azstorm.org>

Frequently Asked Questions ???

When does my construction site require coverage under the Arizona Pollutant Discharge Elimination System (AZPDES) Construction General Permit?

Sites that will disturb one or more acres or less than one acre if the project is part of a larger common plan of development.

Why is the AZPDES Construction General Permit necessary? Stormwater discharges and runoff associated with construction sites can be a major contributor of pollutants to an urban storm sewer system, a wash or other waterways. Pollutants associated with construction activity may include, but are not limited to sediment, solvents, petroleum products, solid waste, paints, asphalt, lime, sealants, pesticides, etc.

How do I obtain coverage under the AZPDES Construction General Permit? You will be required to develop a Stormwater Pollution Prevention Plan (SWPPP) and submit a completed Notice of Intent (NOI) to the Arizona Department of Environmental Quality (ADEQ) for permit coverage. Check with your local municipality to determine additional submittals and/or requirements.

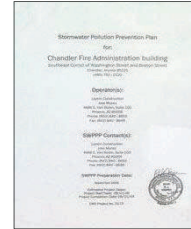
What must I do to comply with the AZPDES Construction General Permit following coverage?

- Maintain a copy of the SWPPP on site
- Post Authorization Number near site entrance
- Implement and maintain Best Management Practices (BMPs) included in your SWPPP
- Incorporate a combination of BMPs to address erosion and sediment control and the control of wastes and other construction site pollutants
- Conduct site inspections per the frequency detailed in the SWPPP
- Promptly correct deficiencies found during inspections or field observations as soon as possible
- Repair and maintain BMPs when found to be ineffective or in need of repair
- Update the SWPPP and site map to reflect changes or modifications relative to current site conditions
- Submit a Notice of Termination (NOT) to ADEQ upon final site stabilization

The SWPPP

The SWPPP is a site specific plan which includes narrative information describing how requirements in Parts III through VIII of the Construction General Permit are met, and includes, but is not limited to:

- SWPPP Certification
- Site and Activity Description
 - Identification of Operators
 - Responsible Parties
 - Site Description
 - Site Map
 - Receiving Waters
 - Identify and Describe BMPs
 - Summary of Potential Pollutant Sources
- Permit Related Records
 - Copy of Construction General Permit
 - Copy of completed NOI and NOT application
 - Copy of authorization certificate from ADEQ
 - Municipality that received a copy of the NOI
 - Other agreements or permits from any state local, or federal agencies



Inspections

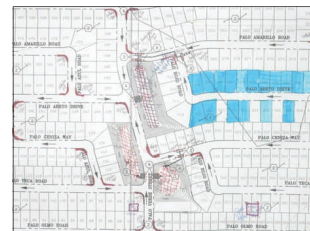
The site shall be inspected a minimum of once every 7 calendar days, or once every 14 calendar days and also within 24 hours of the end of each rain event of 0.5 inches or greater.

- Inspections conducted by qualified personnel
- Complete inspection report for each inspection
- Address corrective actions noted during inspections

Best Management Practices

Methods, Measures or Practices that Prevent or Reduce Discharges

- Stabilized Construction Entrances/Exits
- Storm Drain Inlet and Drywell Protection
- Spill Prevention and Containment
- Stabilization of Disturbed Areas
- Erosion and Sediment Control
- Perimeter Protection
- Chemical Storage
- Street Sweeping
- Recordkeeping
- Housekeeping
- Maintenance
- Dust Control
- Training



Perimeter Protection



Trackout Control



Chemical Storage



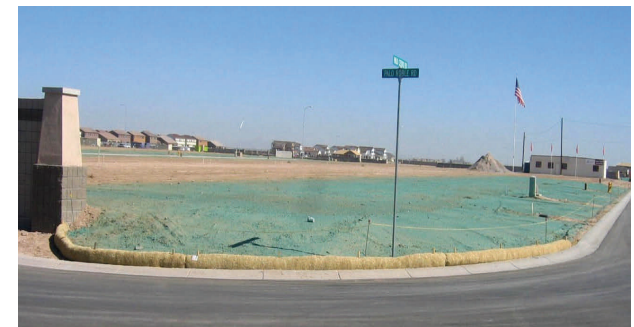
Inlet Protection



Street Sweeping



Stabilization



Erosion and Sediment Control