



Shaping a new  
tomorrow, today.

2021

---

# Western Canal Corridor Analysis (WW1060, WW1246, WA1546)

## Phase 1 Summary

# Introductions

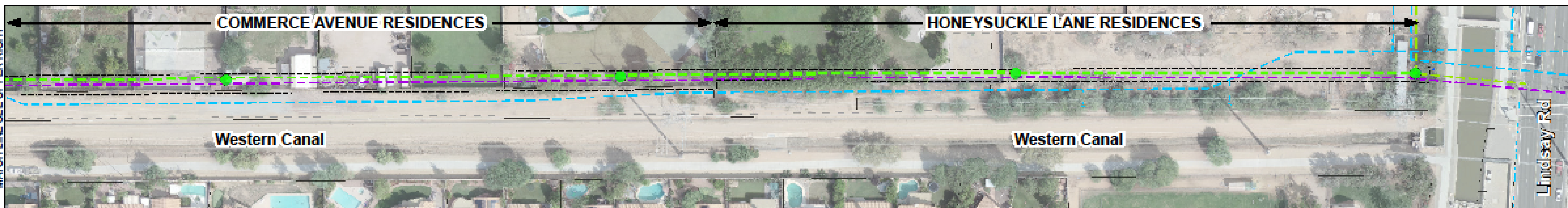
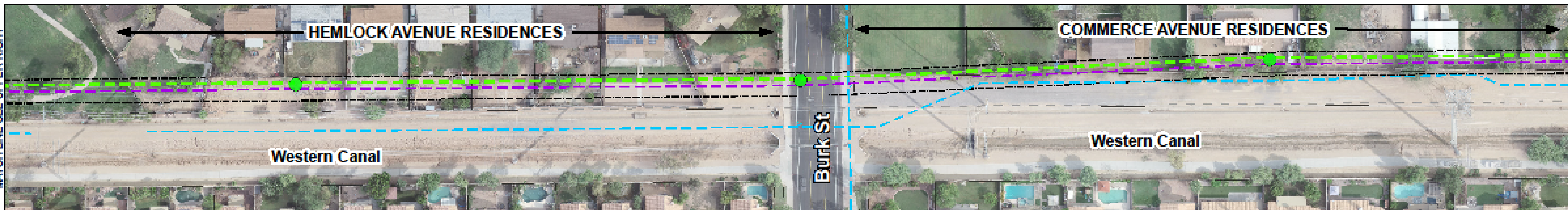
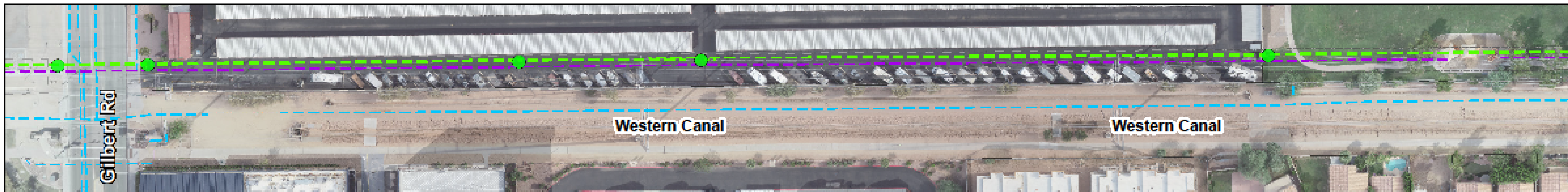
---







- Town of Gilbert
  - Jason Montgomery, Senior Project Manager
  - Ken Snow, Wastewater Manager
- Entellus
  - Martin Weeden, Project Manager
- Archer Western Construction & TF Contracting
  - Eric Streck
  - Dan Foley
- MakPro
  - Teresa Makinen

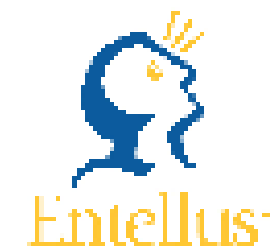
# Agenda

---

- Western Canal Corridor Summary
- Project Summary
- Corridor Analysis & Options
- Corridor Utility Coordination
- Next Steps
- Open House



| Legend   |                              |   |                    |
|--|------------------------------|---|--------------------|
|  | Existing 24" Potable Water   |  | TOG Sewer Easement |
|  | Existing 36" Gravity Sewer   |  | SRP Easement       |
|  | Existing 18" Reclaimed Water |  | Parcel Boundaries  |

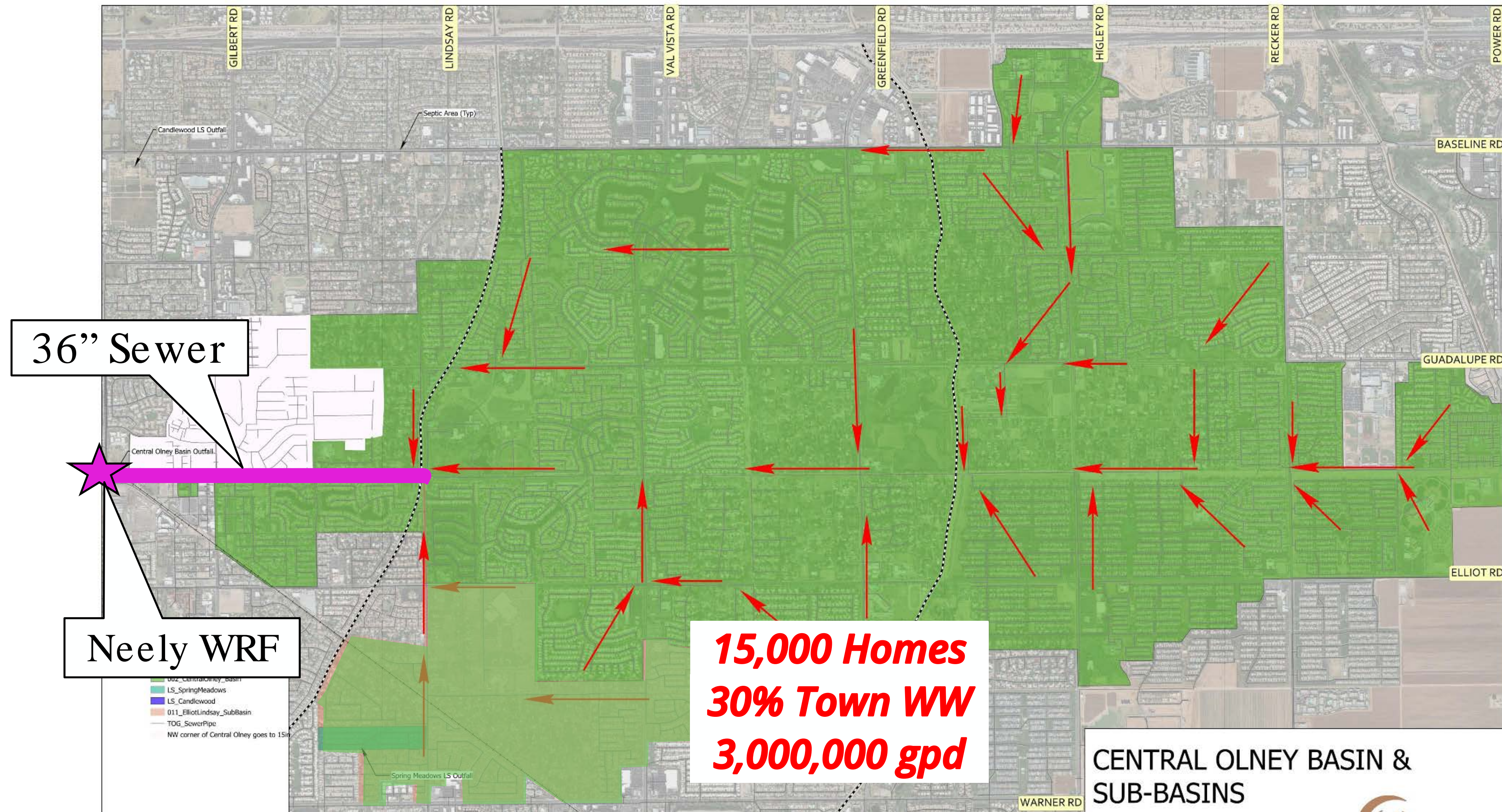


## Western Canal Corridor Analysis

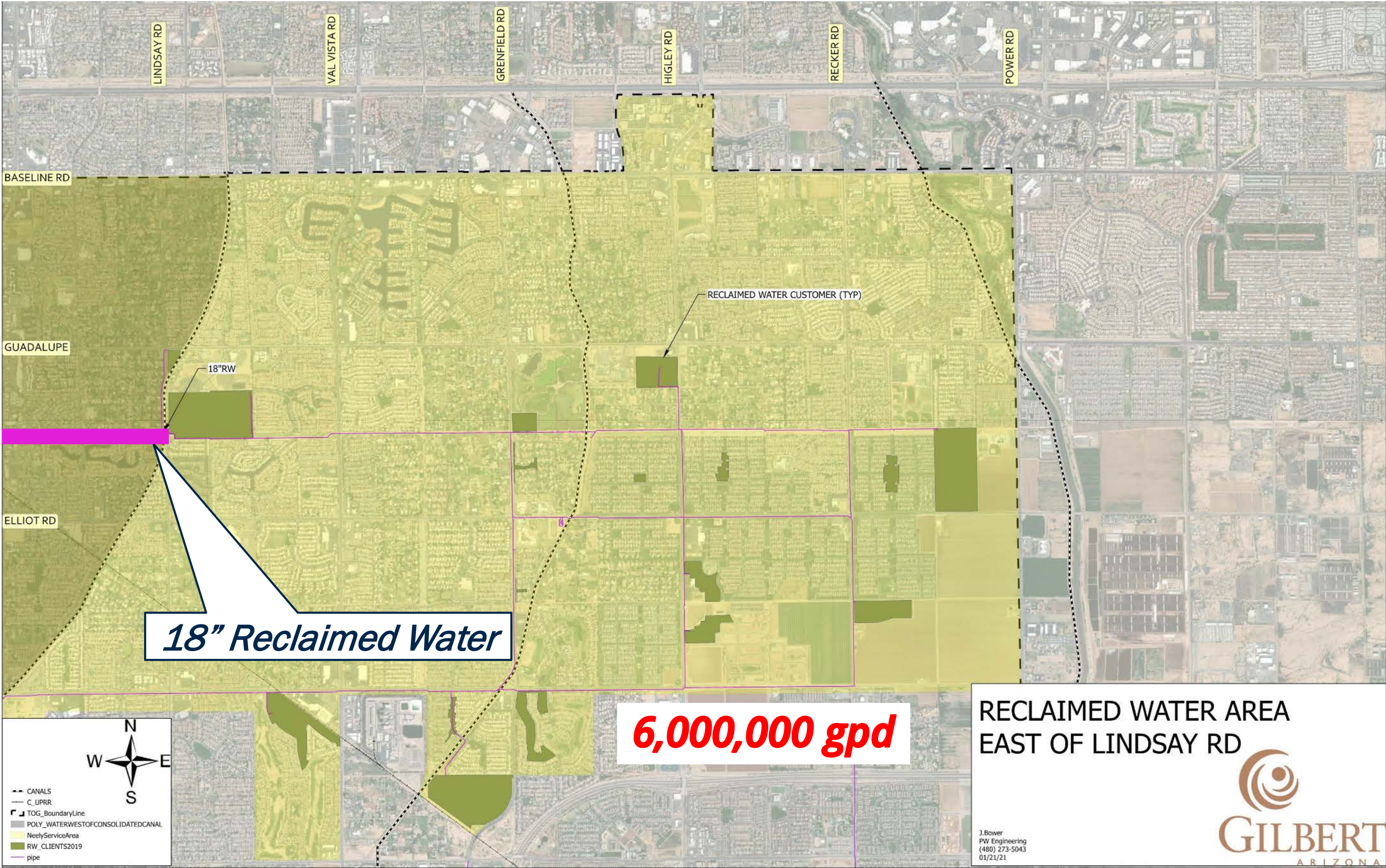
### Existing Facilities



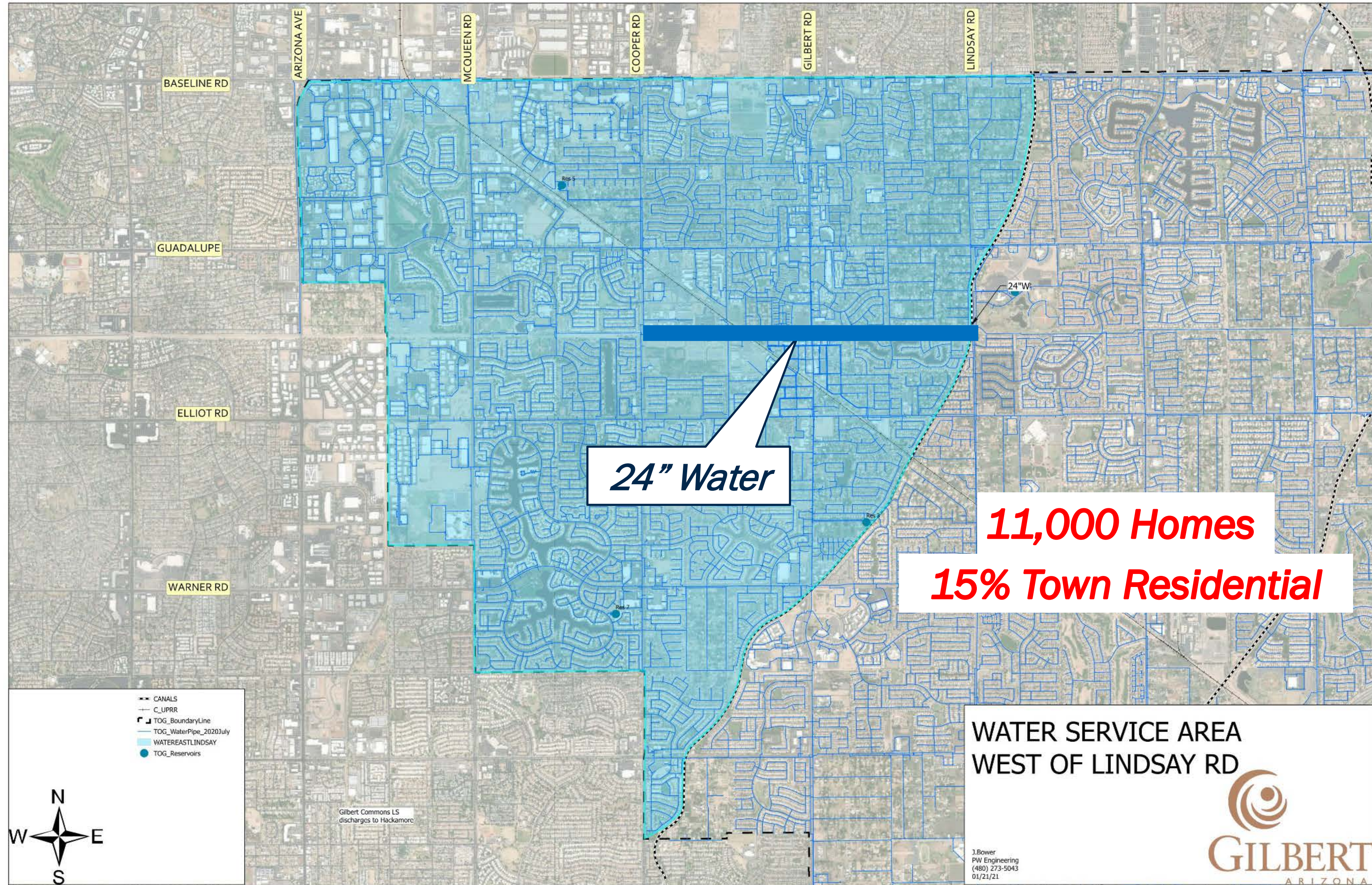
# WW1060 - 36" Sewer



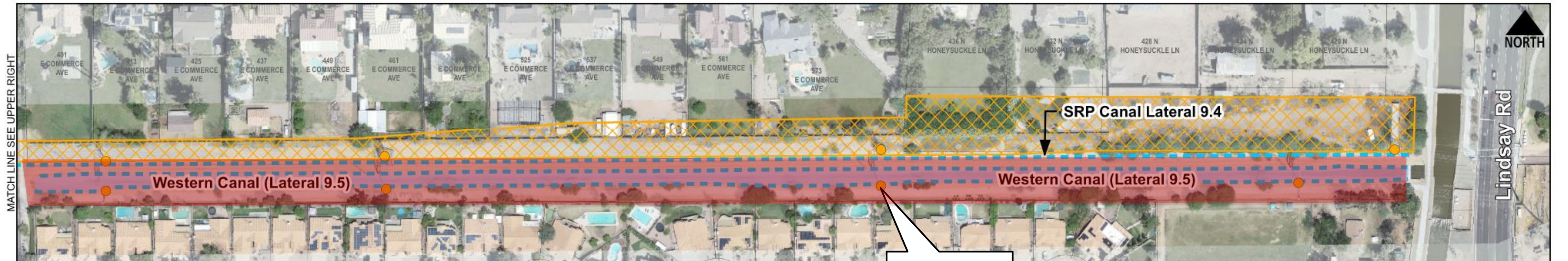
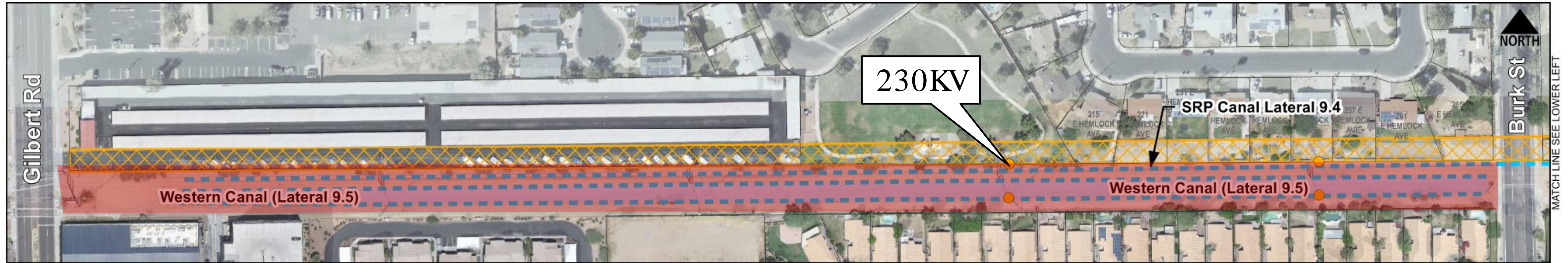
# WW1246 – 18" Reclaimed Water








# WA1546 – 24" Potable Water



# Western Canal Corridor – SRP Facilities

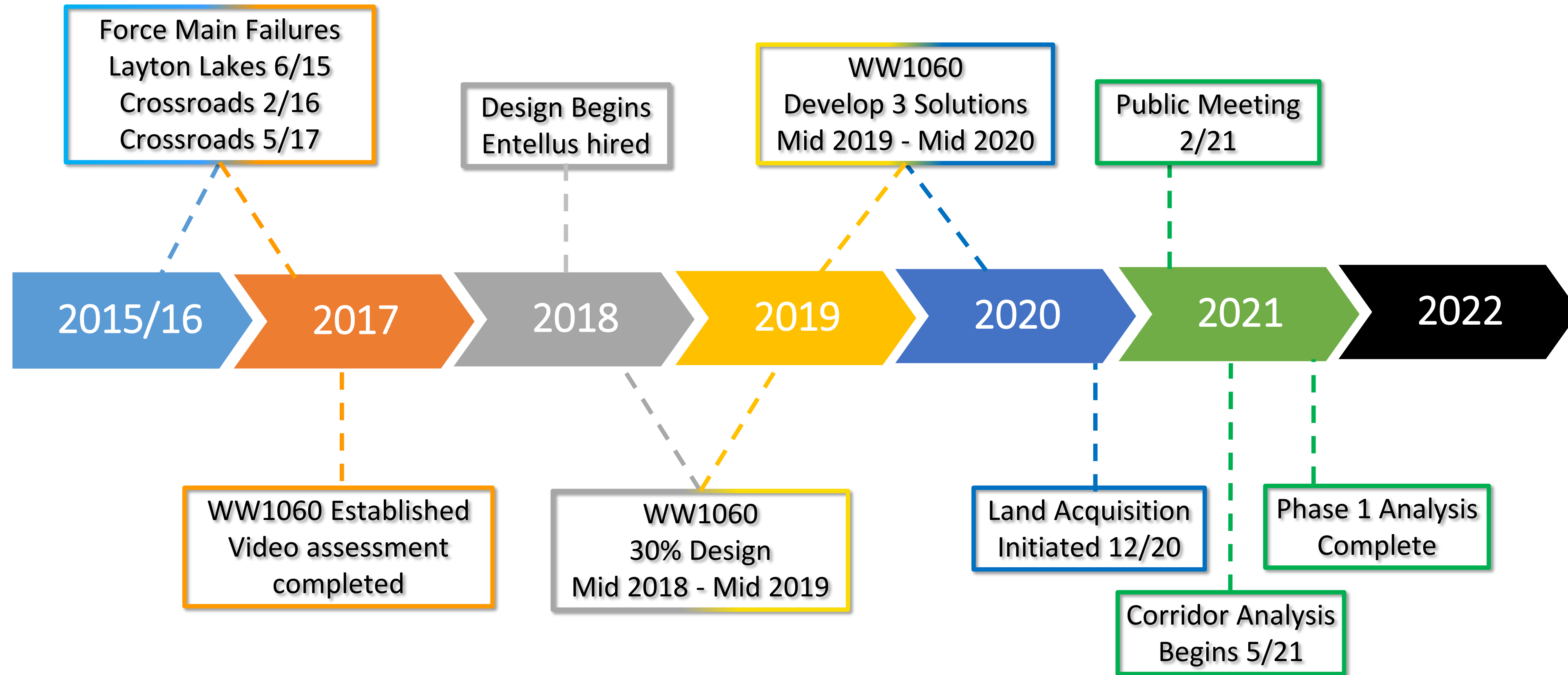


**Legend**

-  SRP Transmission Facility
-  SRP Water Facility
-  SRP Easement
-  Parcel Boundaries
-  Bureau of Reclamation Property



# Project Summary



# Options Analysis Overview

---

## Options 1-4

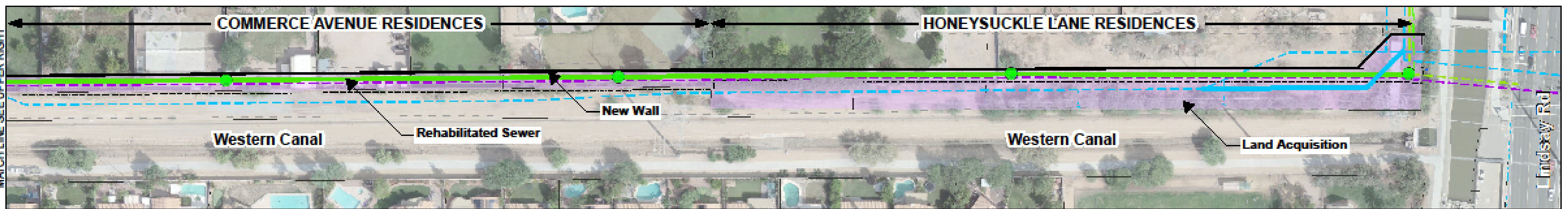
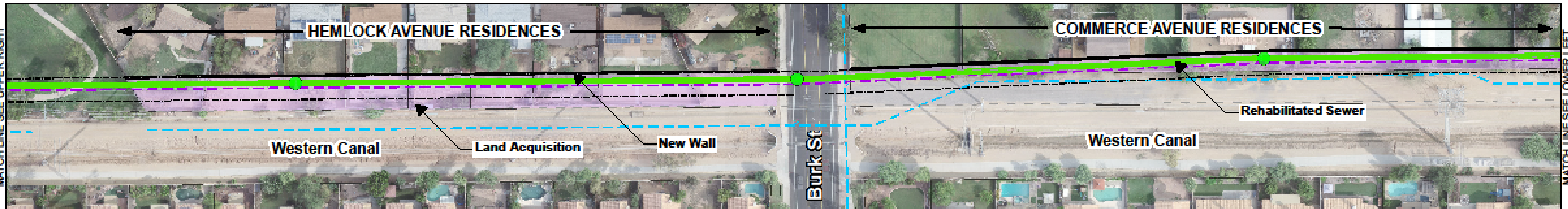
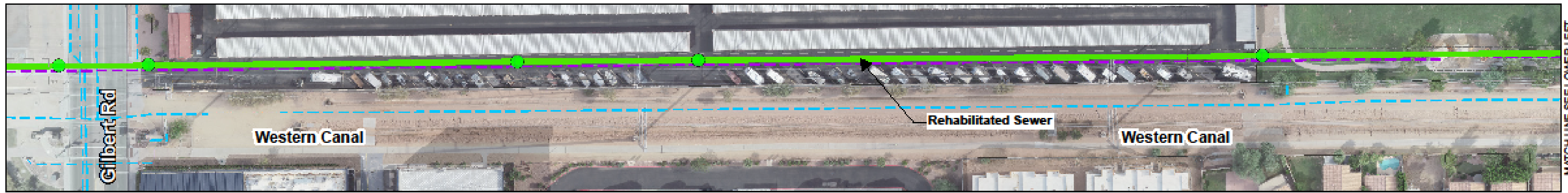
Rehabilitate Within Existing Easement

## Options 5-7

Relocation Within Western Canal

## Options 8-10

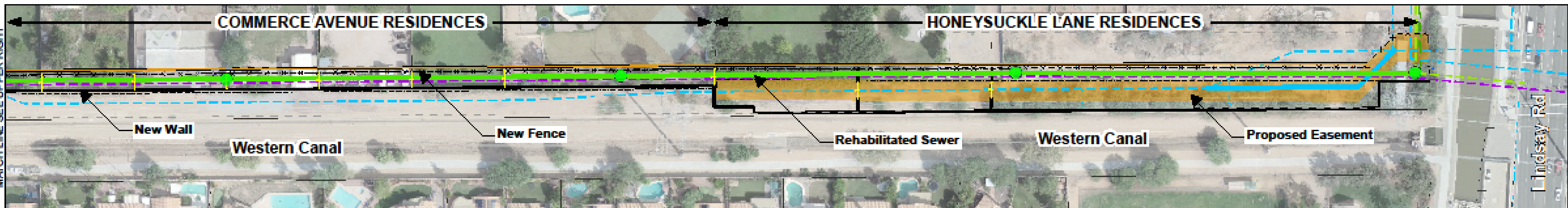
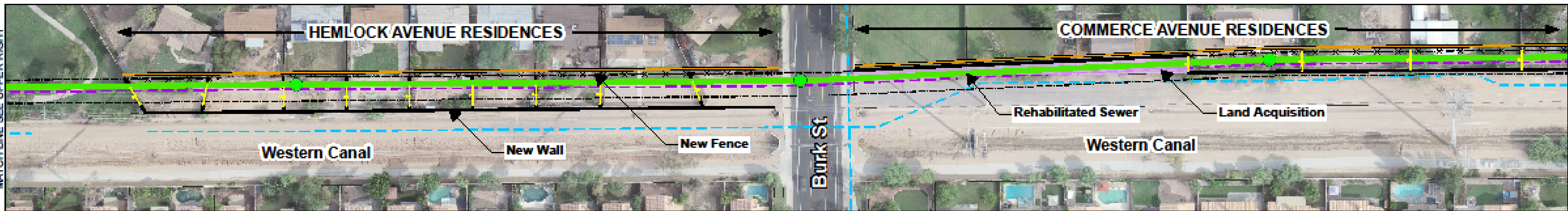
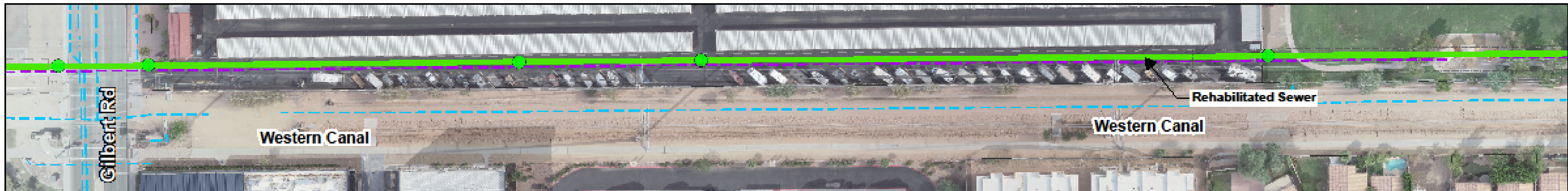
Relocation Outside of Western Canal



| Legend |                                 |  |                        |
|--------|---------------------------------|--|------------------------|
|        | Proposed 24" Potable Water      |  | Land Aquisition Area   |
|        | Rehabilitated 36" Gravity Sewer |  | TOG Sewer Easement     |
|        | Proposed Wall                   |  | SRP Easement           |
|        | Existing 24" Potable Water      |  | Parcel Boundaries      |
|        | Existing 36" Gravity Sewer      |  | Rehabilitated Manholes |
|        | Existing 18" Reclaimed Water    |  |                        |



**Western Canal Corridor Analysis**  
 Option 1 Exhibit  
 Acquire Easement in Fee

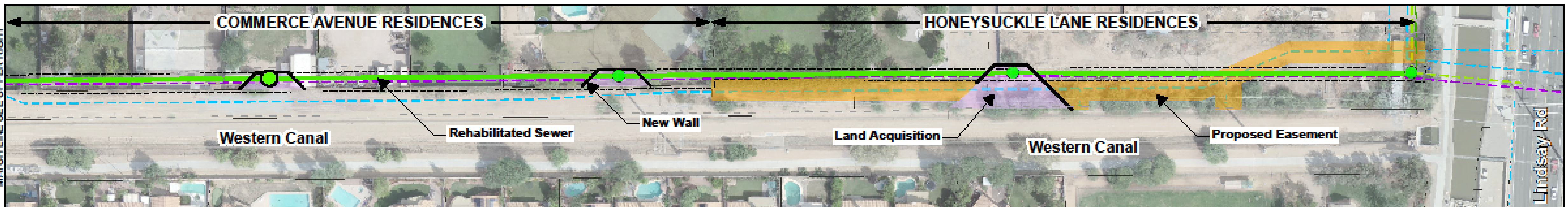
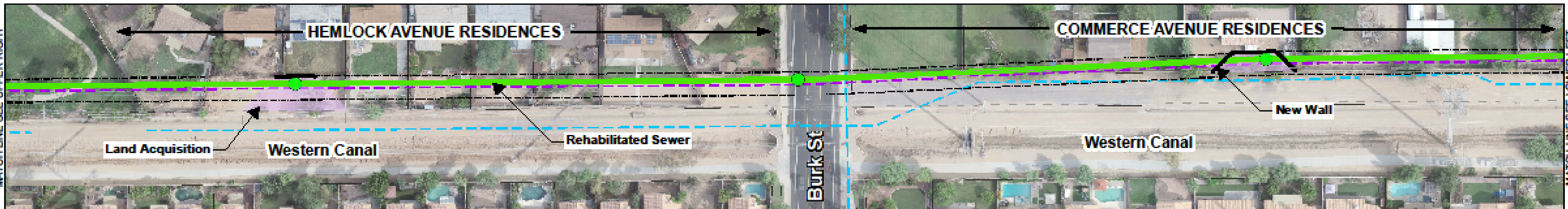
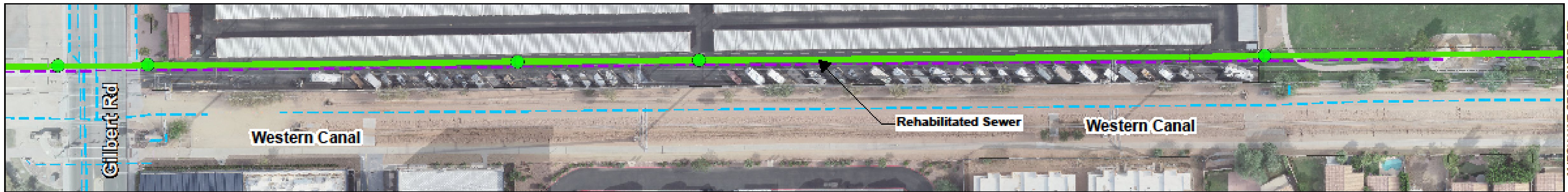


- Legend**
- Proposed 24" Potable Water
  - Rehabilitated 36" Gravity Sewer
  - Proposed Gate
  - Proposed TCE
  - Proposed Wall
  - - - Proposed Fence
  - Existing 24" Potable Water
  - Existing 36" Gravity Sewer
  - Existing 18" Reclaimed Water
  - Land Aquisition Area
  - Proposed Easement Area
  - TOG Sewer Easement
  - SRP Easement
  - Parcel Boundaries
  - Rehabilitated Manholes



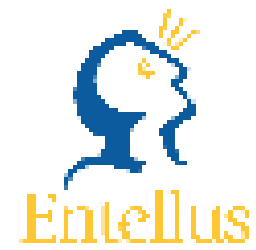
**Western Canal Corridor Analysis**  
**Option 2 Exhibit**  
**Utility Corridor Alley**

NORTH



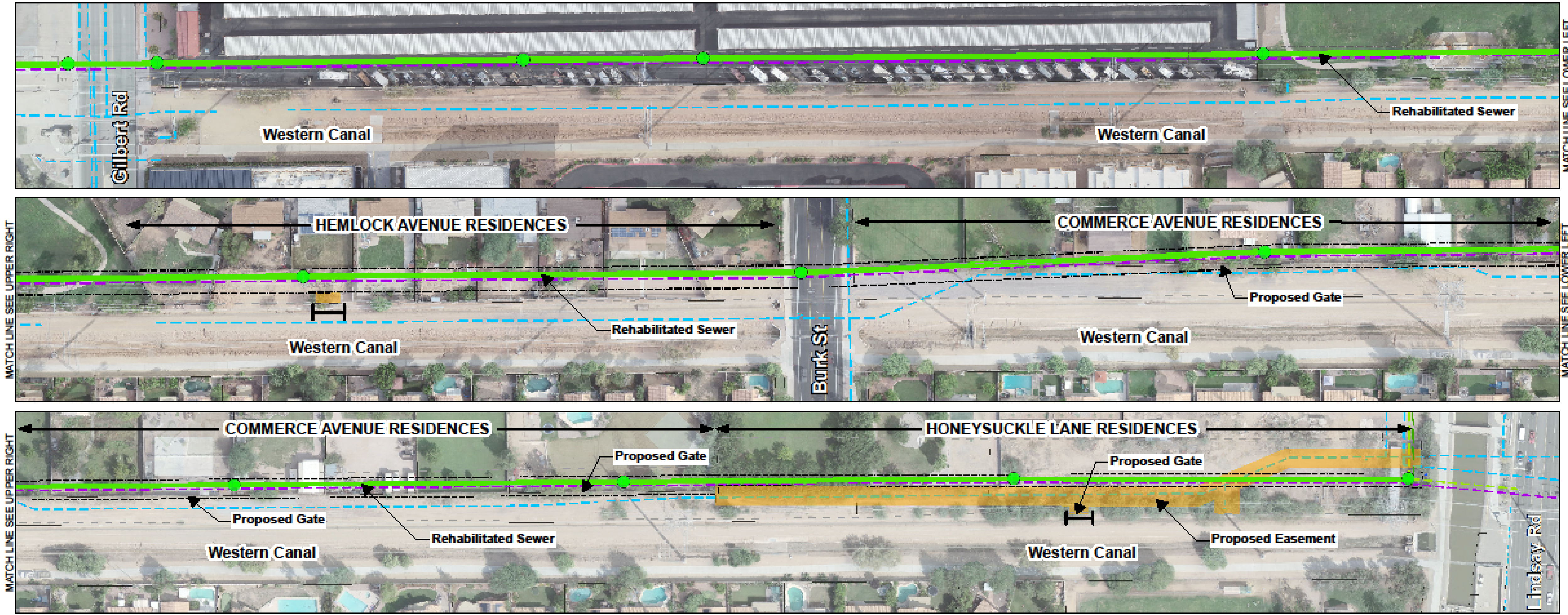
**Legend**

|  |                                 |  |                              |  |                    |
|--|---------------------------------|--|------------------------------|--|--------------------|
|  | Proposed Sewer Manholes         |  | Existing 24" Potable Water   |  | TOG Sewer Easement |
|  | Rehabilitated Manholes          |  | Existing 36" Gravity Sewer   |  | SRP Easement       |
|  | Rehabilitated 36" Gravity Sewer |  | Existing 18" Reclaimed Water |  | Parcel Boundaries  |
|  | Proposed TCE                    |  | Land Aquisition Area         |  |                    |
|  | Proposed Wall                   |  | Proposed Easement Area       |  |                    |



**Western Canal Corridor Analysis**  
**Option 3 Exhibit**  
**Minimal Acquisition at Manholes**





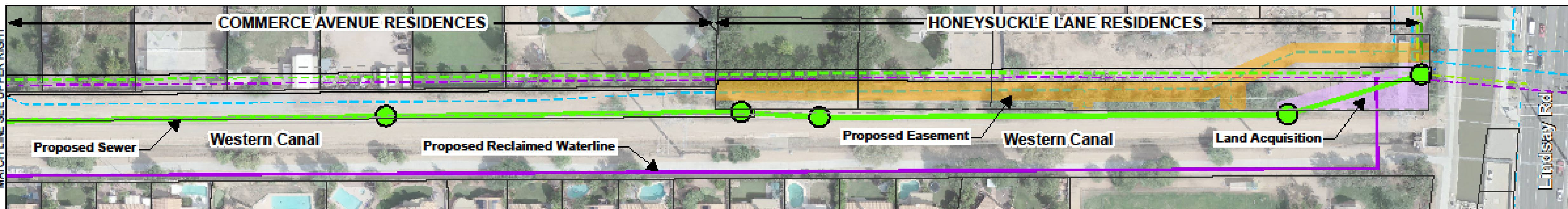
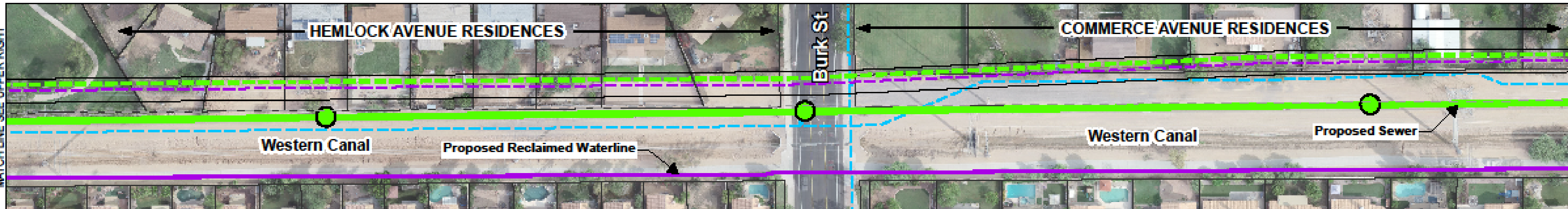
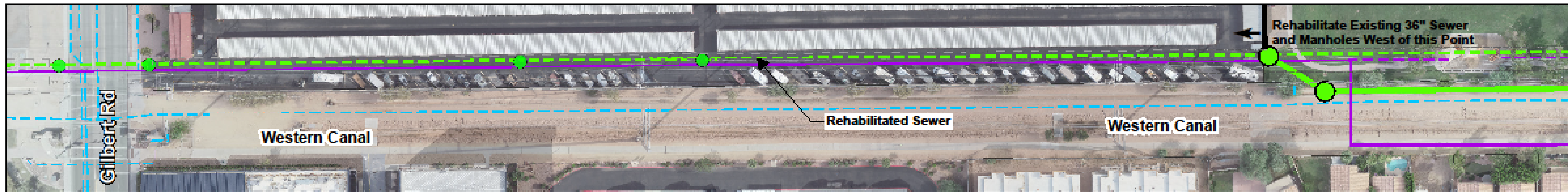
**Legend**

|  |                                 |  |                              |  |                    |
|--|---------------------------------|--|------------------------------|--|--------------------|
|  | Rehabilitated Manholes          |  | Existing 24" Potable Water   |  | TOG Sewer Easement |
|  | Rehabilitated 36" Gravity Sewer |  | Existing 36" Gravity Sewer   |  | SRP Easement       |
|  | Headwall and Pipe               |  | Existing 18" Reclaimed Water |  | Parcel Boundaries  |
|  |                                 |  | Proposed Easement Area       |  |                    |

Entellus  
ARCHER WESTERN  
gilbert

**Western Canal Corridor Analysis**  
**Option 4 Exhibit**  
**Gates to Manhole Properties**

NORTH



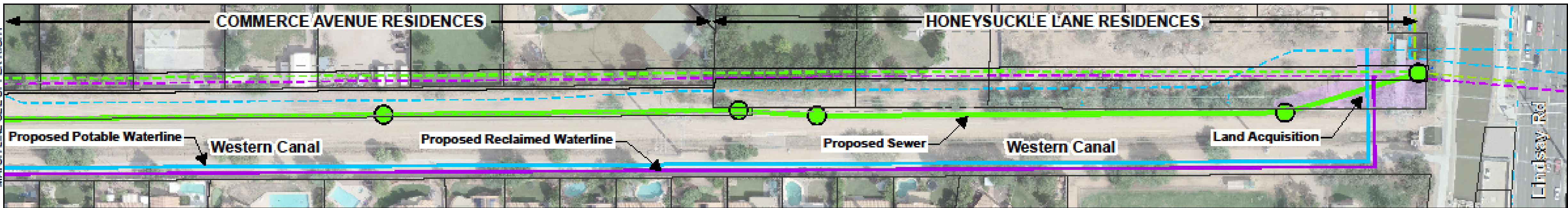
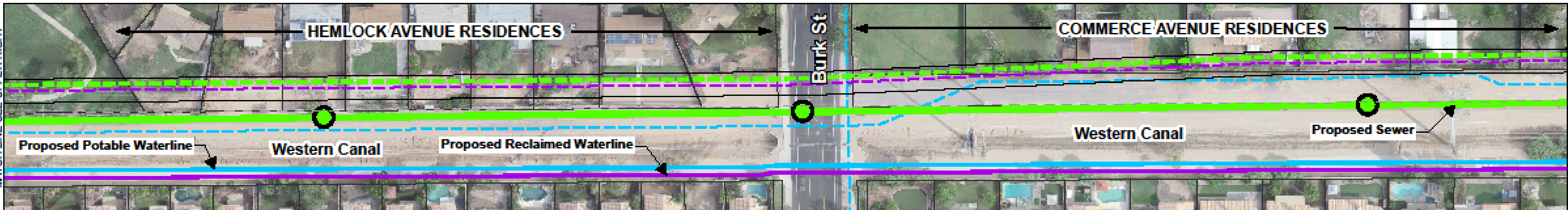
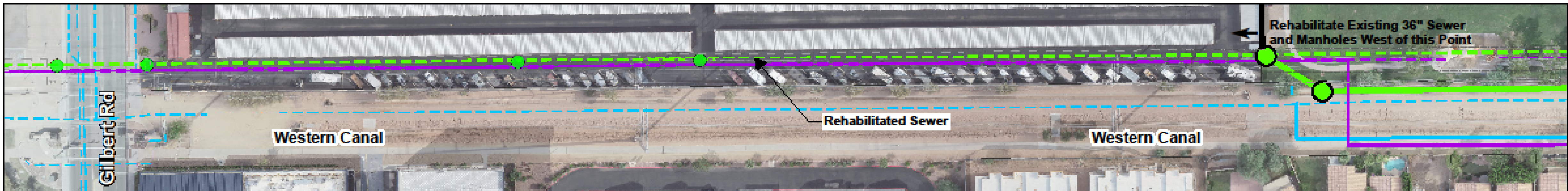
**Legend**

|  |                              |  |                              |  |                        |
|--|------------------------------|--|------------------------------|--|------------------------|
|  | Proposed Sewer Manholes      |  | Existing 24" Potable Water   |  | Proposed Easement Area |
|  | Rehabilitated Manholes       |  | Existing 36" Gravity Sewer   |  | TOG Sewer Easement     |
|  | Proposed 18" Reclaimed Water |  | Existing 18" Reclaimed Water |  | SRP Easement           |
|  | Proposed 36" Sewer           |  | Land Acquisition Area        |  | Parcel Boundaries      |



**Western Canal Corridor Analysis**  
 Option 5 Exhibit  
 Relocate Sewer & Reclaimed to Western Canal

NORTH

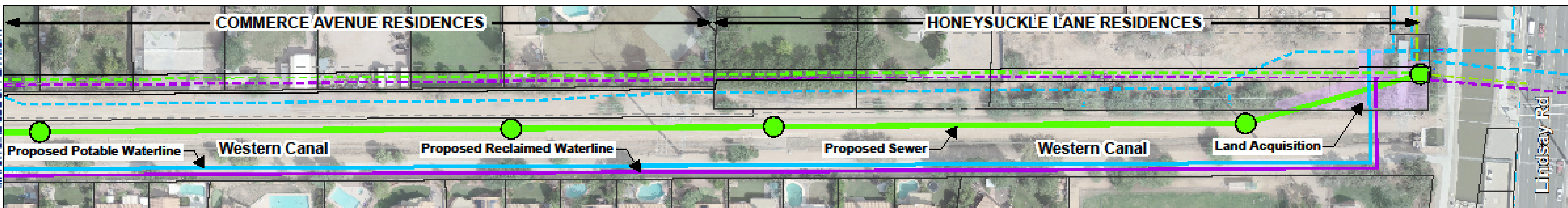
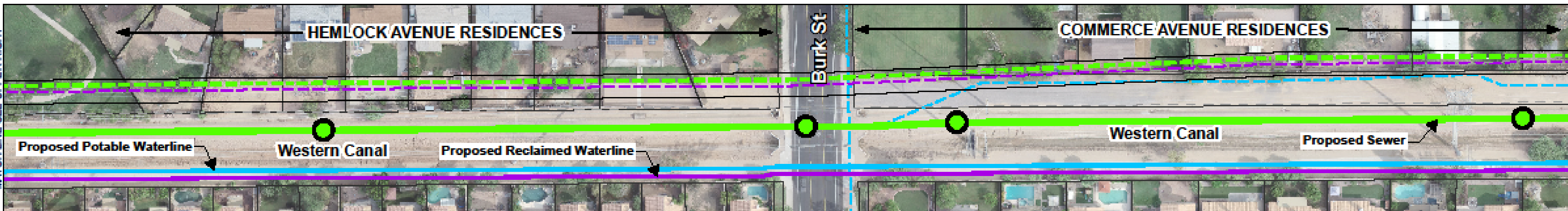
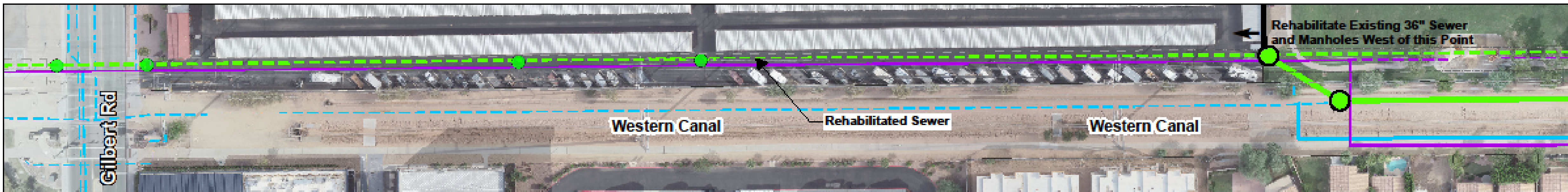


**Legend**

|  |                              |  |                              |  |                    |
|--|------------------------------|--|------------------------------|--|--------------------|
|  | Proposed Sewer Manholes      |  | Existing 24" Potable Water   |  | TOG Sewer Easement |
|  | Rehabilitated Manholes       |  | Existing 36" Gravity Sewer   |  | SRP Easement       |
|  | Proposed 18" Reclaimed Water |  | Existing 18" Reclaimed Water |  | Parcel Boundaries  |
|  | Proposed 36" Sewer           |  | Land Acquisition Area        |  |                    |
|  | Proposed 24" Potable Water   |  |                              |  |                    |

**Western Canal Corridor Analysis**  
 Option 6 Exhibit  
 Relocate Sewer, Reclaimed & Potable  
 to Western Canal



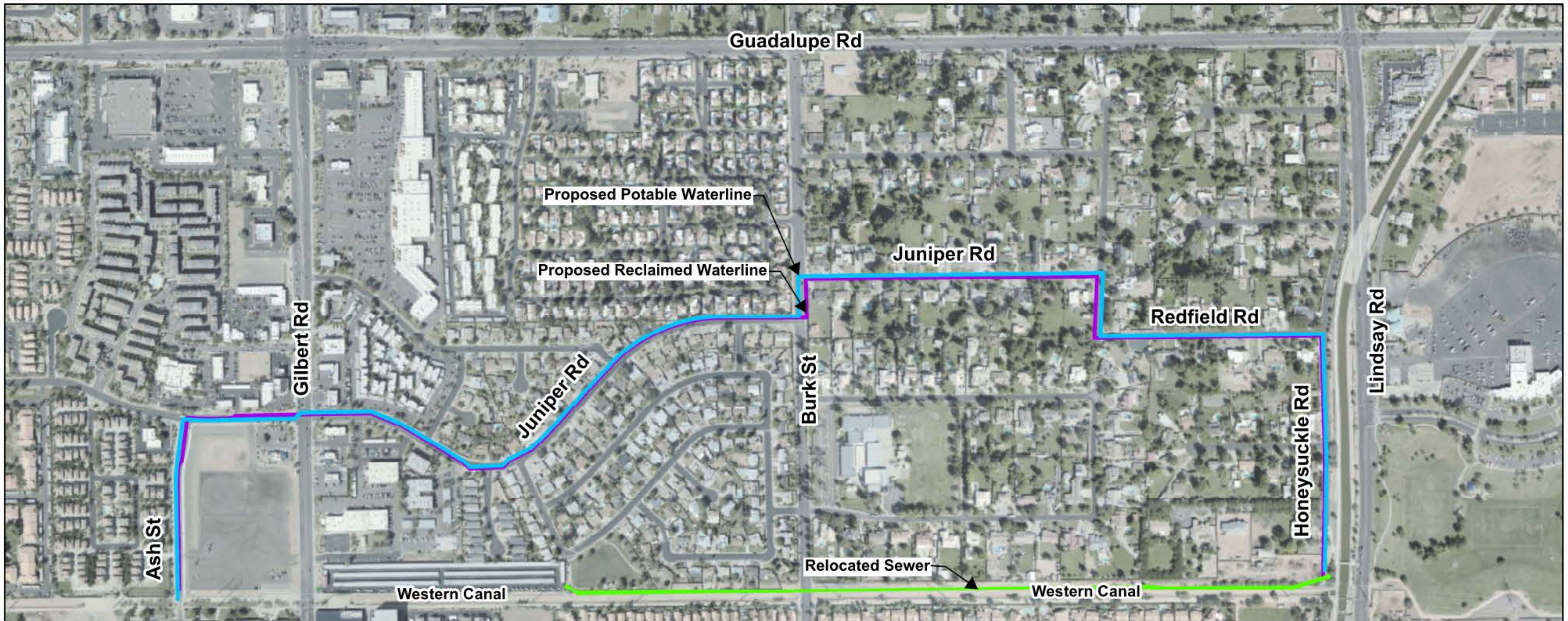


**Legend**

|  |                              |  |                              |  |                      |
|--|------------------------------|--|------------------------------|--|----------------------|
|  | Proposed Sewer Manholes      |  | Existing 24" Potable Water   |  | Land Aquisition Area |
|  | Rehabilitated Manholes       |  | Existing 36" Gravity Sewer   |  | TOG Sewer Easement   |
|  | Proposed 18" Reclaimed Water |  | Existing 18" Reclaimed Water |  | SRP Easement         |
|  | Proposed 36" Sewer           |  |                              |  | Parcel Boundaries    |
|  | Proposed 24" Water           |  |                              |  |                      |

**Western Canal Corridor Analysis**  
 Option 7 Exhibit  
 Option Description: Relocate Sewer North of Western Canal + Relocate Reclaimed Waterline + Relocate Potable Waterline

NORTH



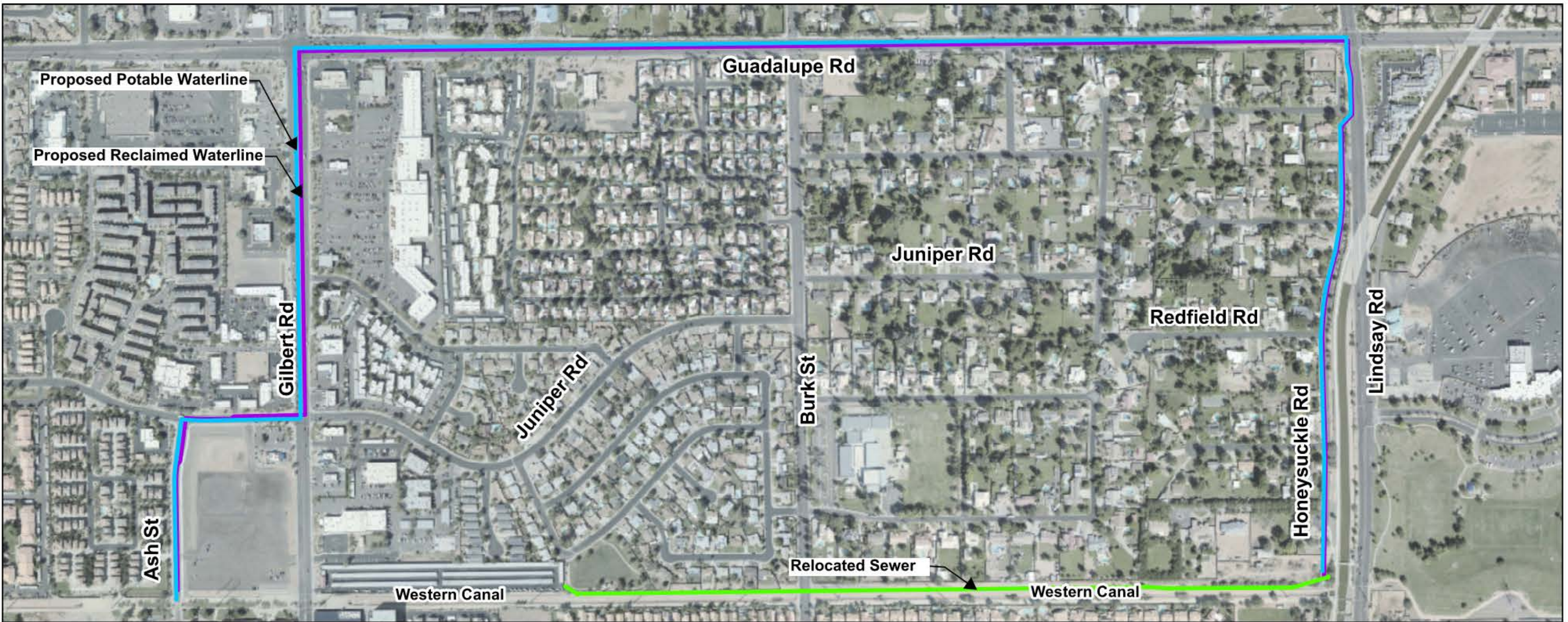
**Legend**

- Proposed 18" Reclaimed Water
- Proposed 36" Gravity Sewer
- Proposed 24" Potable Water



**Western Canal Corridor Analysis**  
 Option 8 Exhibit  
 Sewer in Western Canal,  
 Potable & Reclaimed in Residential Streets

NORTH



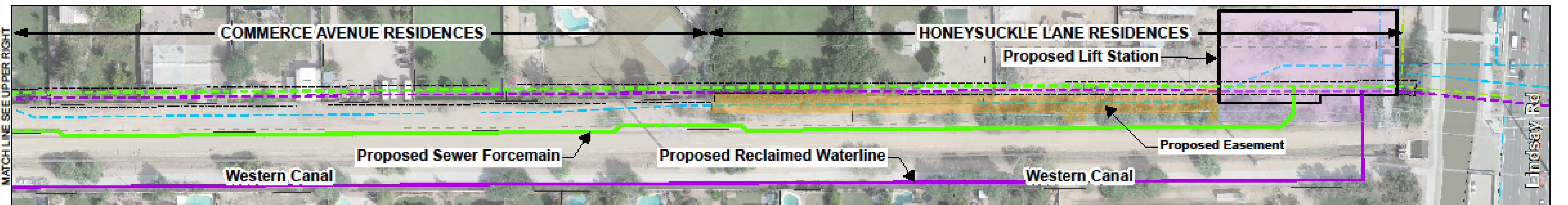
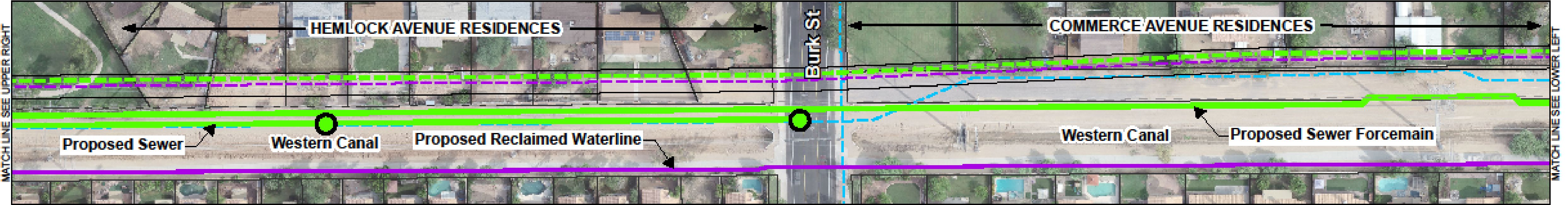
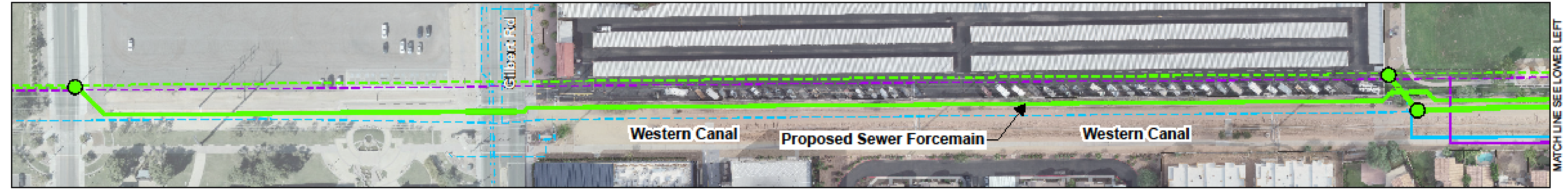
**Legend**

- Proposed 18" Reclaimed Water
- Proposed 36" Gravity Sewer
- Proposed 24" Potable Water



**Western Canal Corridor Analysis**  
 Option 9 Exhibit  
 Sewer in Western Canal,  
 Potable & Reclaimed in Arterial Streets

NORTH



| Legend |                                   |  |                              |  |                        |
|--------|-----------------------------------|--|------------------------------|--|------------------------|
|        | Proposed Sewer Manholes           |  | Existing 24" Potable Water   |  | Proposed Easement Area |
|        | Proposed 18" Reclaimed Water      |  | Existing 36" Gravity Sewer   |  | TOG Sewer Easement     |
|        | Proposed Dual 12" Forcemain Sewer |  | Existing 18" Reclaimed Water |  | SRP Easement           |
|        | Proposed Lift Station             |  | Land Aquisition              |  | Parcel Boundaries      |



**Western Canal Corridor Analysis**  
 Option 10 Exhibit  
 New Lift Station, Reclaimed in Western Canal

NORTH

# Options Cost Comparison

| Option    | Summary  | Cost  |
|-----------|--|---|
| Option 1  | Acquire Easement in Fee  | \$16,880,000  |
| Option 2  | Utility Corridor Alley   | \$14,860,000  |
| Option 3  | Minimal Acquisition at Manholes  | \$12,800,000  |
| Option 4  | Gates to Manhole Properties  | \$12,480,000  |
| Option 5  | Relocate Sewer & Reclaimed to Western Canal                                      | \$19,800,000  |
| Option 6  | Relocate Sewer, Reclaimed & Potable to Western Canal                             | \$21,950,000  |
| Option 7  | Relocate Sewer, Reclaimed & Potable to Western Canal (Alternate Sewer Alignment) | \$19,680,000  |
| Option 8  | Sewer in Western Canal, Potable & Reclaimed in Residential Streets               | \$22,230,000  |
| Option 9  | Sewer in Western Canal, Potable & Reclaimed in Arterial Streets                  | \$24,890,000  |
| Option 10 | New Lift Station, Reclaimed in Western Canal                                     | \$27,890,000<br><small>(Does not include O&amp;M Yearly Costs of approximately \$850k per year)</small> |

# SRP Feedback

---

## Allowable

- Proposed plan option may be feasible but is subject to SRP further design review and approval.

## Not Allowable

- The proposed plan option is not supported by SRP and will violate SRP and BOR guidelines.
  1. The proposed option is not permitted by Bureau of Reclamation. The placement of non-reclamation facilities on federal BOR property that is reserved for reclamation purposes is not permitted.
  2. The proposed option presents direct conflicts with existing and future irrigation and power facilities and will impact access and maintenance operations for SRP.

# SRP Feedback Results

| Option    | Summary  | SRP Feedback    |
|-----------|--|-----------------|
| Option 1  | Acquire Easement in Fee  | ✓ Allowable     |
| Option 2  | Utility Corridor Alley   | ✓ Allowable     |
| Option 3  | Minimal Acquisition at Manholes  | ✓ Allowable     |
| Option 4  | Gates to Manhole Properties  | ✓ Allowable     |
| Option 5  | Relocate Sewer & Reclaimed to Western Canal                                      | ✗ Not Allowable |
| Option 6  | Relocate Sewer, Reclaimed & Potable to Western Canal                             | ✗ Not Allowable |
| Option 7  | Relocate Sewer, Reclaimed & Potable to Western Canal (Alternate Sewer Alignment) | ✗ Not Allowable |
| Option 8  | Sewer in Western Canal, Potable & Reclaimed in Residential Streets               | ✗ Not Allowable |
| Option 9  | Sewer in Western Canal, Potable & Reclaimed in Arterial Streets                  | ✗ Not Allowable |
| Option 10 | New Lift Station, Reclaimed in Western Canal                                     | ✗ Not Allowable |

# Next Steps

---

- Phase 2 of Corridor Analysis
  - Proceed with 4 Allowable Options
  - Solicit neighborhood feedback for 5<sup>th</sup> option
  - Field Assessment of 3 Utilities
  - Constructability Reviews and Site Visits
  - Refined Cost Estimates
  - Utility Provider Coordination
  - Present Phase 2 Summary
  - Selection of Scope for 3 utilities/projects



# Phase 2 Schedule

---

- Approximate Dates
  - December 2021 / January 2022
    - Potholing
    - Field Assessment of 36" Sewer
    - Field Assessment of 18" Reclaimed Water
    - Assessment Results for 24" Potable Water
  - February 2022 - Utility Provider Coordination
  - April / May 2022 - Phase 2 Summary Presentation

# Provide Feedback

---

- Comment Cards
- Town Website
  - [www.gilbertaz.gov/cip](http://www.gilbertaz.gov/cip)
  - Review Options
  - Ideas for 5th Option by 11/29/21
- Project Hotline
- Email



2021

---

# Western Canal Corridor Analysis (WW1060, WW1246, WA1546)

## Phase 1 Summary

Shaping a new  
tomorrow, today.