



## NOTICE OF DECISION

November 20, 2014

**RE: DR09-27S (PAL14-65) Mercy Medical Commons CSP**

Dear Applicant:

Staff has reviewed the revised drawings received for Administrative Design Review regarding Mercy Medical Commons Comprehensive Sign Plan (CSP). Staff has made the following findings:

- The project is consistent with the LDC and applicable design guidelines;
- The project is compatible with adjacent and nearby development; and
- The project design provides for safe and efficient provision of public services.

Based on the above, staff has approved this Administrative Design Review with the following attached information and conditions:

1. Approval of the Comprehensive Sign Plan for Mercy Medical Commons including:
  - Site Plan with sign locations.
  - Elevations with sign envelopes identified for first and second floors.
  - Inclusion of the existing monument sign within the CSP.
  - Directional sign
  - Wall directory sign
  - Colors and Materials

If you have any questions regarding the above, please contact me at 503-6729.

Sincerely,

A handwritten signature in black ink, appearing to read "Amy Temes", with a long horizontal flourish extending to the right.

Amy Temes  
Senior Planner

Attachments:  
Mercy Medical Commons Comprehensive Sign Plan approval date 11/20/2014

# MERCY MEDICAL COMMONS

3645 South Rome Street, Gilbert, Arizona 85297

**PREPARED BY:**



1205 North Miller Road  
Tempe, Arizona 85281  
480.966.6565 / 480.966.5668(f)  
signs@airparksigns.com

**APPROVED**

Administrative Design Review

Case # DR09-27S (PAL14-65)

Date 11/20/2014

## PROJECT NARRATIVE:

The Mercy Medical Commons Sign Criteria has been established to direct the fabrication and installation of the highest quality signs consistent with the architectural nature of the project.

## GENERAL REQUIREMENTS:

- All signage shall be constructed and installed at tenant's expense.
- All signs are to have written landlord approval and City of Gilbert permit prior to installation.
- Signs installed without approval are subject to removal at tenant's expense.  
Damages may be assessed to cover cost of repairs to building.
- Tenant and his/her sign contractor shall repair any damage caused to any property as a result of their installation.

**APPROVED**  
Administrative Design Review  
Case # DR09-27S (PAL14-65)  
Date 11/20/2014



Gretchen Cherrill, Owner / Designer  
1205 North Miller Road  
Tempe, Arizona 85281  
480.966.6565 / 480.966.5668(f)  
signs@airparksigns.com

All specified details on these drawings are subject to change due to the availability of materials and/or changes in the method of fabrication. Airpark signs & graphics will do their best to maintain the designs intent of these drawings at all times. If the owner or owners' representative wishes to receive detail drawings on all changes during the fabrication process, airpark signs & graphics must be advised in writing prior to the start of fabrication. This is an original unpublished drawing created by airpark signs and graphics. It is submitted for your personal use in connection with a proposed project being planned for you by airpark signs and graphics. It is not to be reproduced, copied, photographed, exhibited or used in any fashion without expressed written approval of airpark signs and graphics.

**Mercy Medical Commons**  
3645 South Rome  
Gilbert, Arizona 85297

trc  
dh

Notes:

Notes:

02-17-14

Page

2

# MARICOPA COUNTY ASSESSOR PARCEL MAP



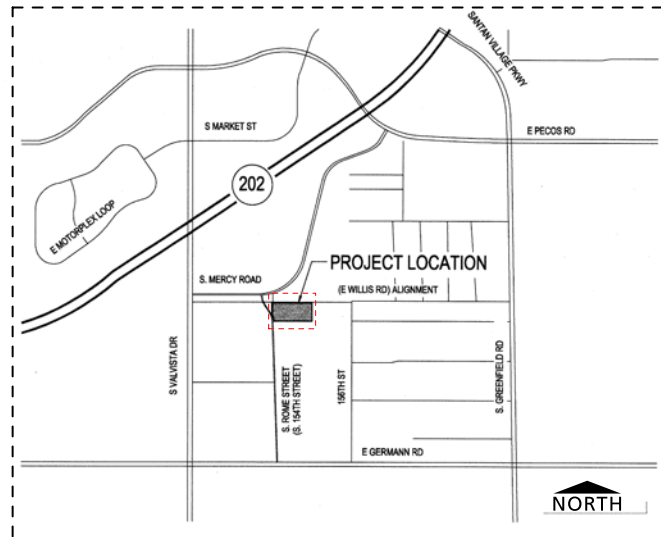
PARCEL NUMBER: 304-53-364

ZONING: GO

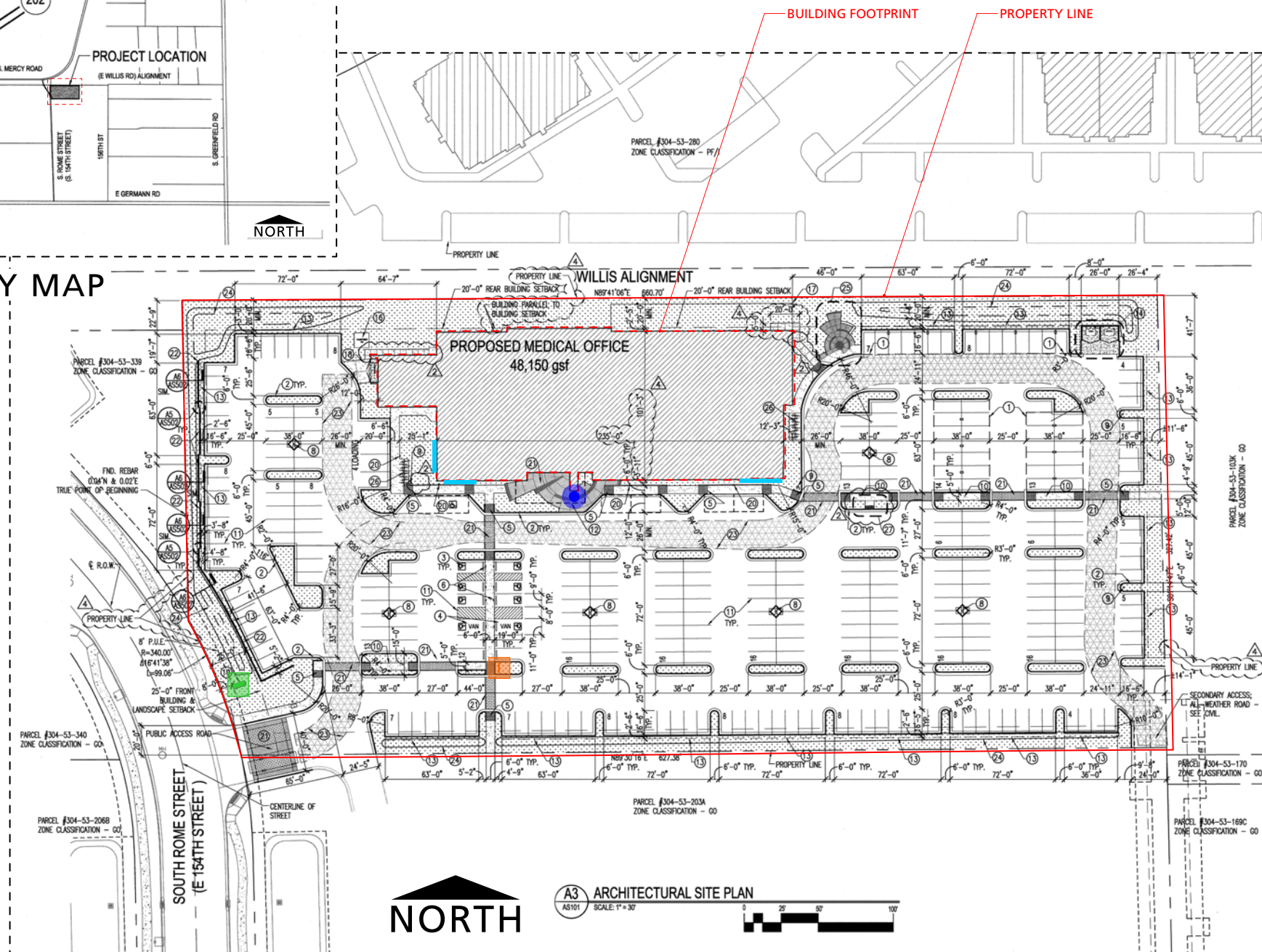


**APPROVED**  
 Administrative Design Review  
 Case # DR09-27S (PAL14-65)  
 Date 11/20/2014

# SIGN LOCATION MAP



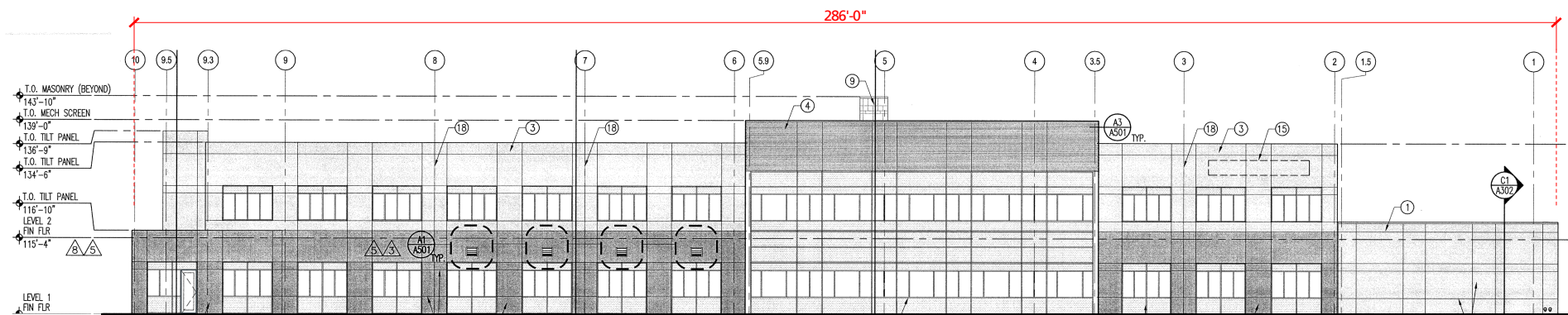
VICINITY MAP



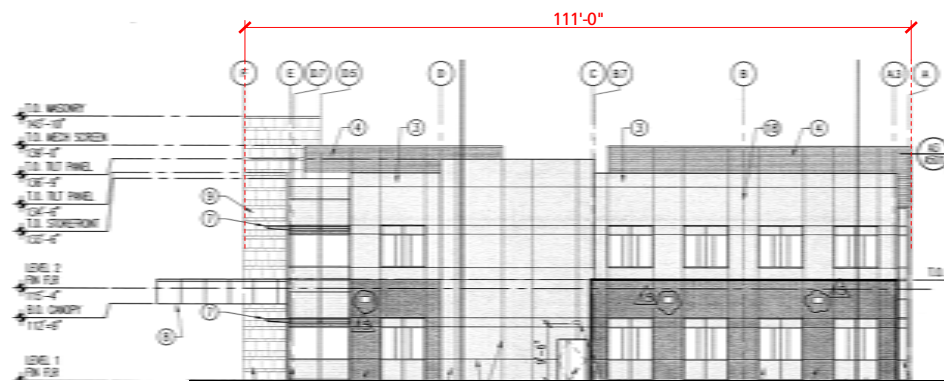
- Exterior Tenant ID
- Exterior Tenant Monument
- Ground Mounted Directional
- Property Line
- Building Footprint
- Wall Directory

**APPROVED**  
 Administrative Design Review  
 Case # DR09-27S (PAL14-65)  
 Date 11/20/2014

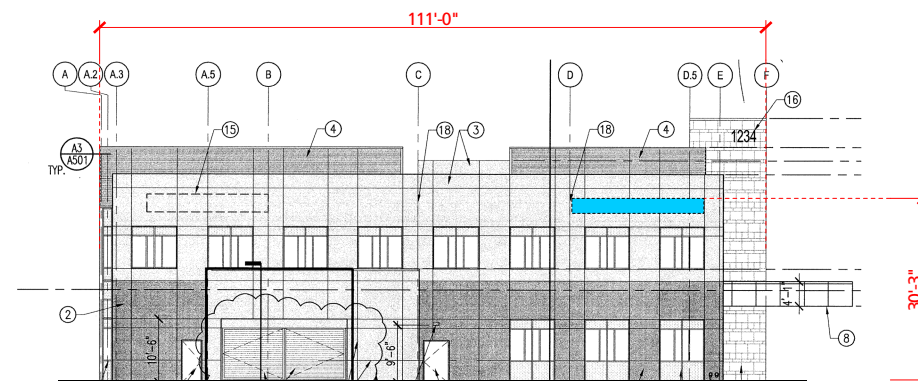
# BUILDING ELEVATIONS



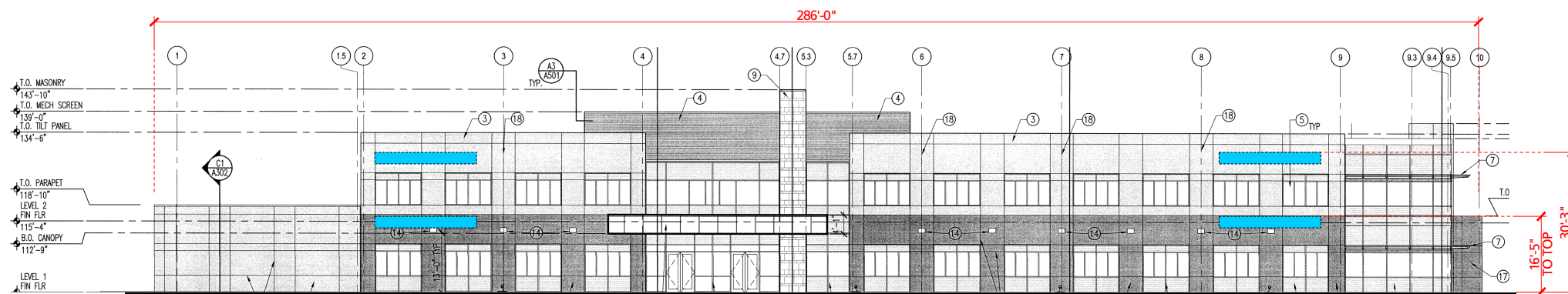
**NORTH ELEVATION** Scale: 1/32" = 1'



**EAST ELEVATION** Scale: 1/32" = 1'



**WEST ELEVATION** Scale: 1/32" = 1'



**SOUTH ELEVATION** Scale: 1/32" = 1'

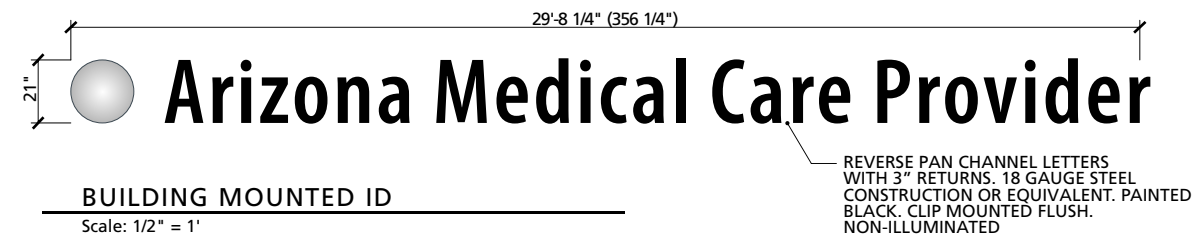
- Sign envelope
- Maximum Area: 55 sqft
- Proposed Signs: 5



**TRUE BUILDING COLORS** Scale: NTS

**APPROVED**  
 Administrative Design Review  
 Case # DR09-27S (PAL14-65)  
 Date 11/20/2014

# EXTERIOR BUILDING SIGNAGE



## Construction

Individual reverse pan channel lettering.  
 Font: Century Gothic Bold  
 3" deep returns.  
 18 gauge steel construction or equivalent.  
 Clip mounted flush.

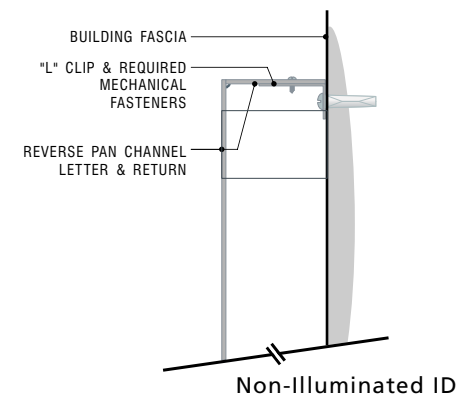
Corporate standard logos and colors may be used with landlord approval.

All signs to have written landlord approval and be permitted by the City of Gilbert prior to installation.

Tenant is responsible for restoring the building fascia to "as new" condition when/if a sign is removed.

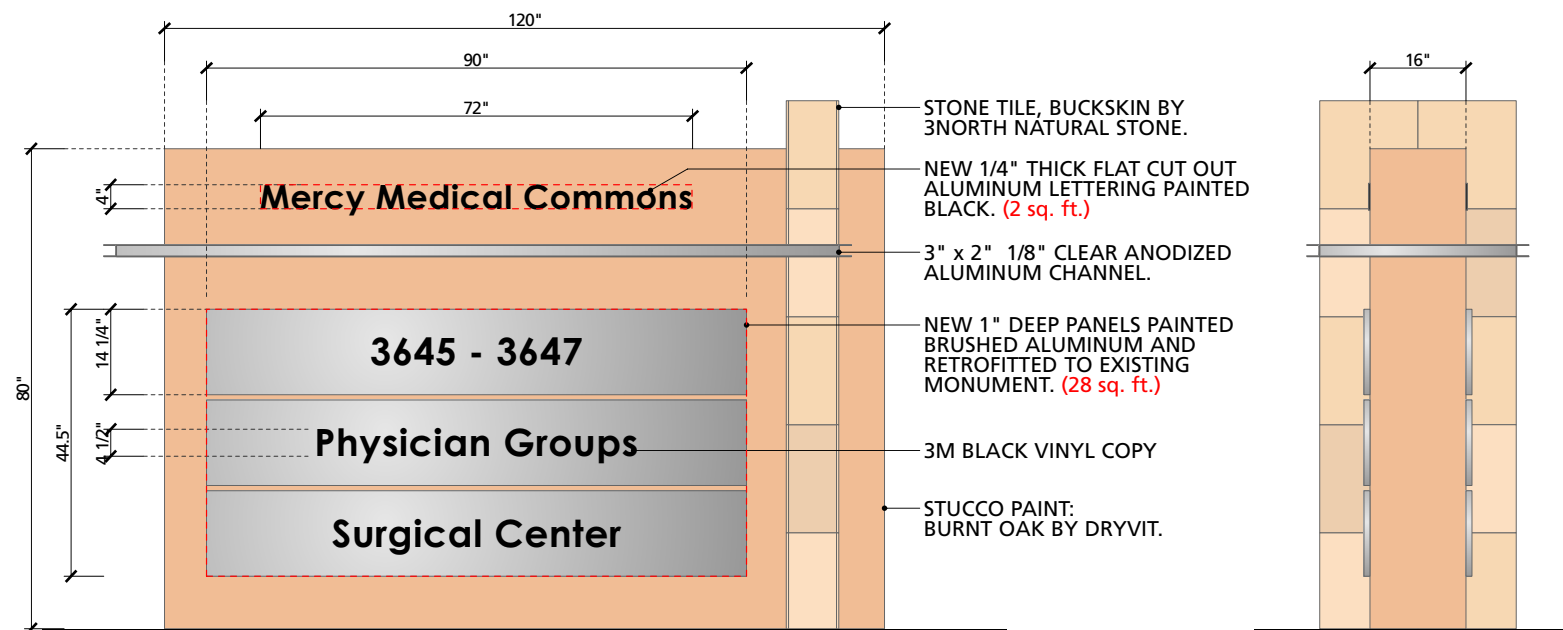
Size: Maximum letter height is 21"

Signs to be mounted in specified sign bands only  
 Due to configuration of building, any tenant may use any sign band.



**APPROVED**  
 Administrative Design Review  
 Case # DR09-27S (PAL14-65)  
 Date 11/20/2014

# EXTERIOR BUILDING MONUMENT



## MULTI TENANT MONUMENT

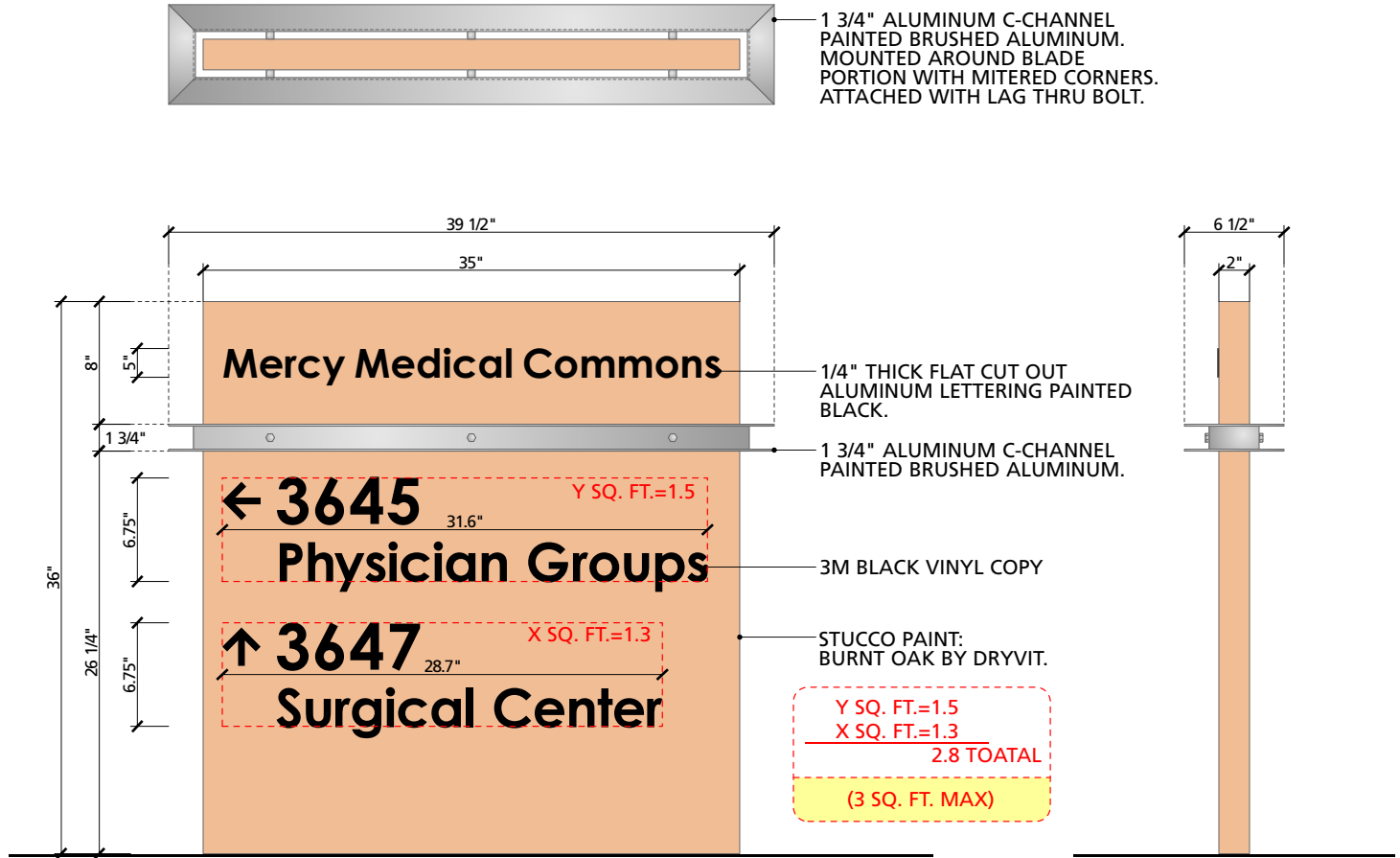
Scale: 3/8" = 1'

- Double sided monument
- Reverse pan channel building panel. 3M vinyl copy applied to panel face.
- Font: Century Gothic Bold.
- Monument is illuminated with ground spot.
- Proposed number of signs: 1
- Area: 13.3 sqft.

**APPROVED**  
 Administrative Design Review  
 Case # DR09-27S (PAL14-65)  
 Date 11/20/2014



# GROUND MOUNTED DIRECTORY



GROUND MOUNTED DIRECTIONAL

Scale: 1" = 1'

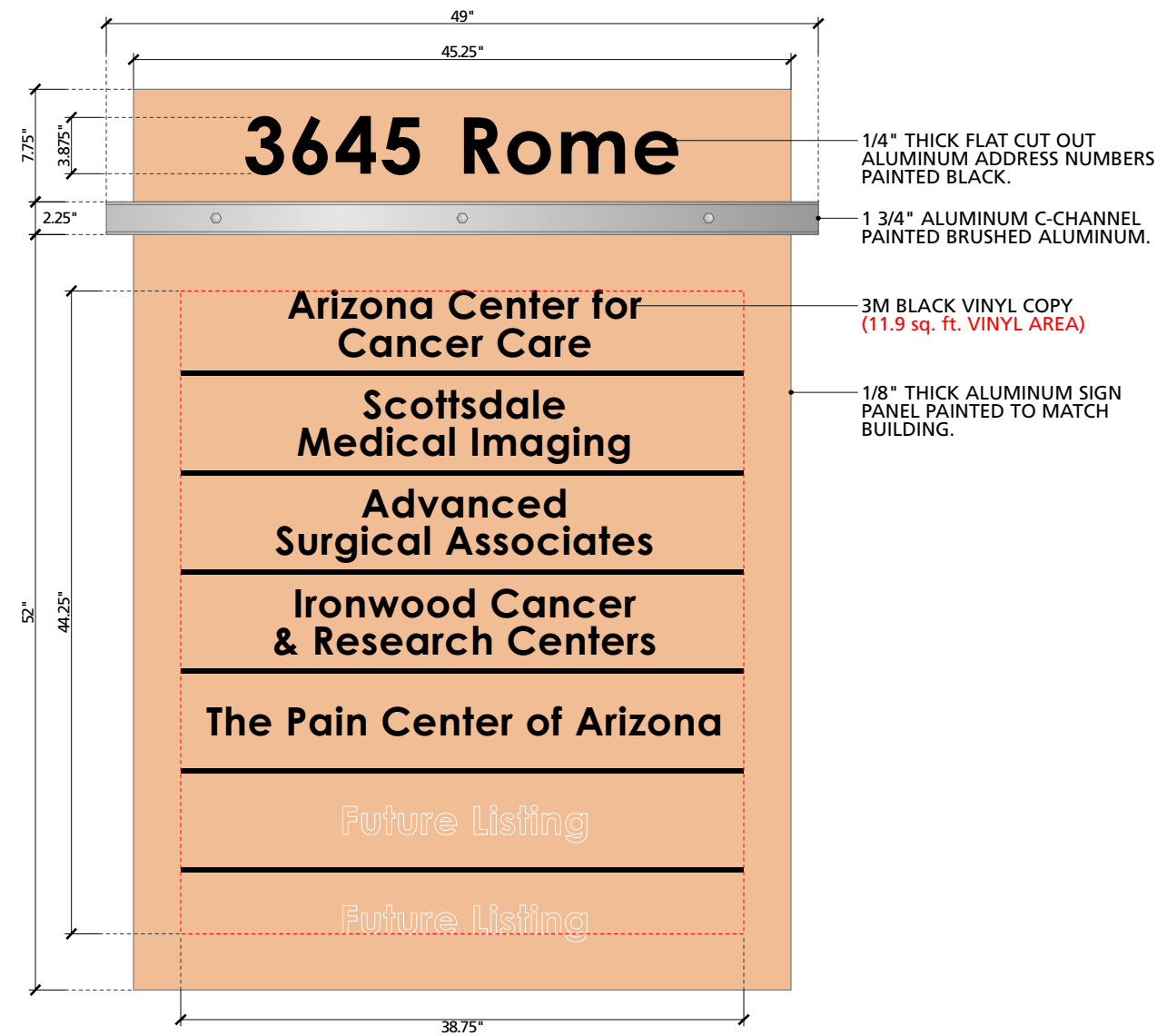
GROUND MOUNTED VEHICLE DIRECTORY.

Area: 1.78 sqft.

Proposed number of signs: 1

**APPROVED**  
 Administrative Design Review  
 Case # DR09-27S (PAL14-65)  
 Date 11/20/2014

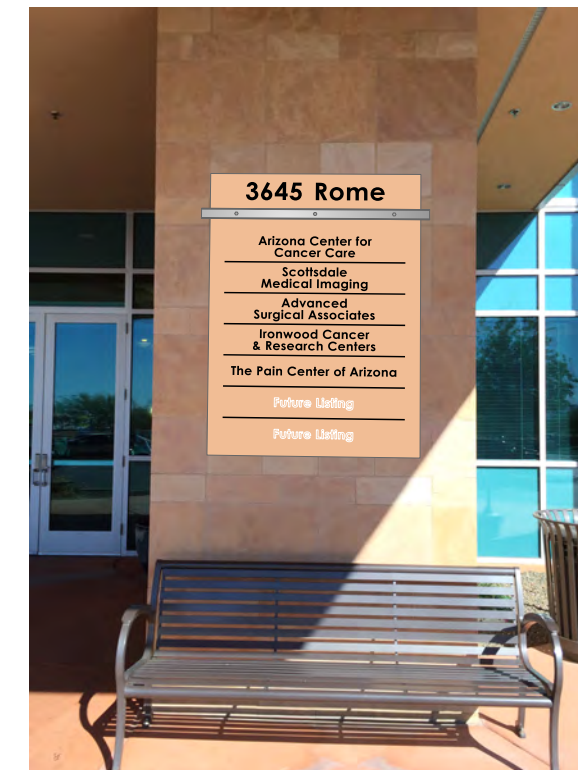
# WALL DIRECTORY



WALL DIRECTORY

Sign Area: 12.667 sqft

Proposed Number of Signs: 1



## WALL DIRECTORY

Scale: 1" = 1'

**APPROVED**  
 Administrative Design Review  
 Case # DR09-27S (PAL14-65)  
 Date 11/20/2014

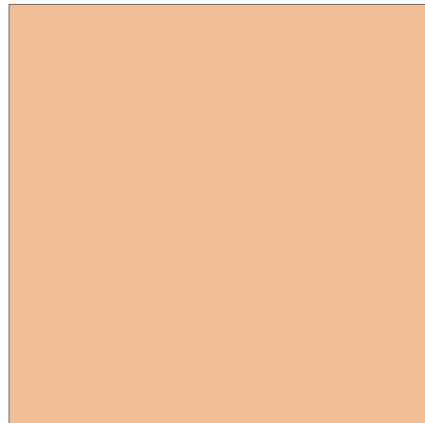
# MATERIALS / COLOR BOARD



BLACK PAINT  
3M BLACK VINYL



BRUSHED ALUMINUM PAINT



STUCCO PAINT: BURNT OAK  
BY DRIVIT.

**APPROVED**  
Administrative Design Review  
Case # DR09-27S (PAL14-65)  
Date 11/20/2014



Gretchen Cherrill, Owner / Designer  
1205 North Miller Road  
Tempe, Arizona 85281  
480.966.6565 / 480.966.5668(f)  
signs@airparksigns.com

All specified details on these drawings are subject to change due to the availability of materials and/or changes in the method of fabrication. Airpark signs & graphics will do their best to maintain the designs intent of these drawings at all times. If the owner or owners' representative wishes to receive detail drawings on all changes during the fabrication process, airpark signs & graphics must be advised in writing prior to the start of fabrication. This is an original unpublished drawing created by airpark signs and graphics. It is submitted for your personal use in connection with a proposed project being planned for you by airpark signs and graphics. It is not to be reproduced, copied, photographed, exhibited or used in any fashion without expressed written approval of airpark signs and graphics.

**Mercy Medical Commons**  
3645 South Rome  
Gilbert, Arizona 85297

trc  
dh

Notes: Materials/color board added 081514 jt

Notes:

02-17-14

Page

10