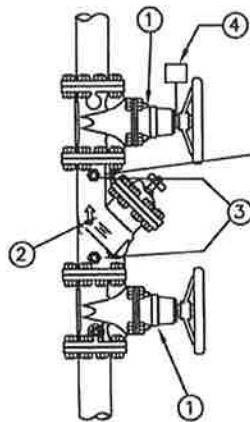
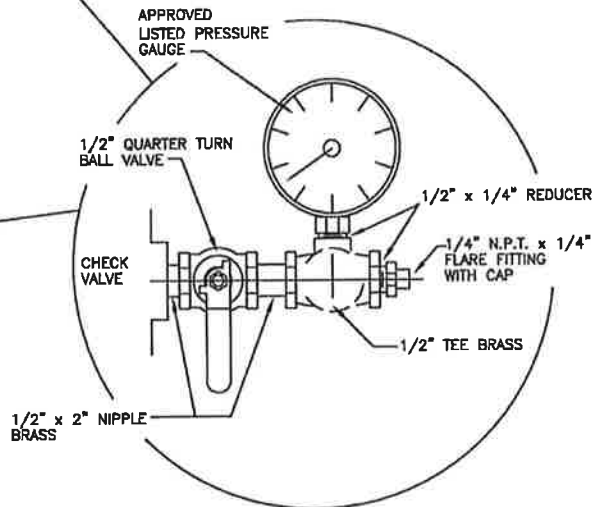


HORIZONTAL ORIENTATION
OUTSIDE INSTALLATION



VERTICAL ORIENTATION
INSIDE INSTALLATION



DETAIL A

GENERAL NOTES:

1. DOUBLE CHECK BACKFLOW ASSMEBLY SHALL BE TESTED FOR PROPER OPERATION PER TOG REQUIREMENTS, BY A CERTIFIED TESTER RECOGNIZED BY THE TOWN, BEFORE A FINAL APPROVAL.
2. CONTACT THE TOWN OF GILBERT BACKFLOW SPECIALIST FOR AN APPROVED LIST OF CERTIFIED TESTERS.
3. PROVIDE 12-INCH MINIMUM CLEARANCE BETWEEN CHECK VALVE AND STRUCTURE.
4. LOCATION OF ASSEMBLY SHALL BE ON THE FIRE RISER IN THE VERTICAL ORIENTATION, OTHER LOCATIONS SHALL BE APPROVED PRIOR TO INSTALLATION.

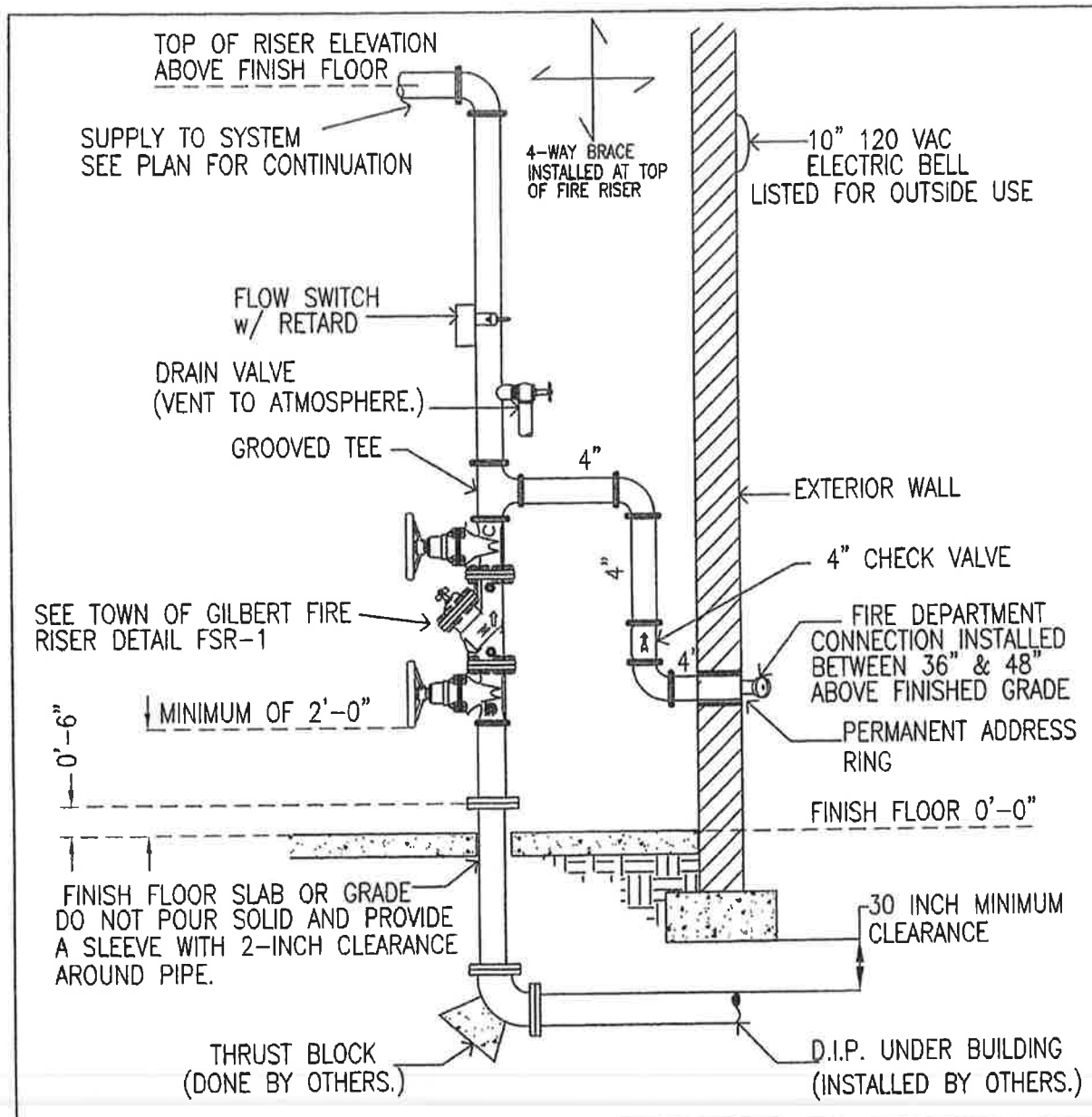
LIST OF MATERIALS:

- ① APPROVED RESILIENT SEATED INDICATING SHUT OFF VALVE (WATTS 450RW OR EQUIVALENT. (TWO REQUIRED) UL LISTED OR FM APPROVED FOR USE ON FIRE PROTECTION SYSTEMS.
- ② APPROVED RESILIENT SEATED TESTABLE DOUBLE CHECK BACKFLOW ASSEMBLY. UL LISTED OR FM APPROVED FOR USE ON FIRE PROTECTION SYSTEMS.
- ③ LISTED PRESSURE GAUGE AND TEST COCK PIPING (TWO REQUIRED). (SEE DETAIL A).
- ④ TAMPER SWITCH.

DETAIL NO.
FSR-1
NTS

TOWN OF GILBERT FIRE SPRINKLER RISER DETAIL

DETAIL NO.
FSR-1
NTS



RISER GENERAL NOTES

- 1) SEE TOWN OF GILBERT FIRE SPRINKLER RISER DETAIL ON THIS SHEET.
- 2) ALL ELECTRICAL WIRING SHALL BE DONE BY QUALIFIED OTHERS.
- 3) ANY SPRINKLER SYSTEM WITH 20 OR MORE HEADS SHALL BE MONITORED FOR FLOW, TAMPER, AND TROUBLE BY AN APPROVED THIRD PARTY.
- 4) ALL VALVES SHALL NOT BE MORE THAN 7'-0" OFF FINISHED FLOOR.
- 5) F.D.C. IS 2'X2'X4 NATIONAL STANDARD THREADS AND CHECK VALVE SHALL BE LOCATED AS CLOSE TO F.D.C. AS POSSIBLE.
- 6) UNDERGROUND PIPING IS SHOWN FOR REFERENCE ONLY. FIRE SPRINKLER CONTRACTOR SHALL BE LIMITED TO ABOVEGROUND PIPING AND SHALL BEGIN WORK APPROX. 6" A.F.F.
- 7) FIRE ALARM CONTROL / MONITOR PANEL SHALL BE LOCATED IN FIRE RISER ROOM.
- 8) INSPECTOR'S TEST SHALL BE LOCATED OFF OF MOST REMOTE BRANCH LINE.
- 9) NO ELECTRIC PANELS AND / OR STORAGE SHALL BE LOCATED IN INTERIOR RISER ROOM WITH DIRECT EXTERIOR ACCESS.

DETAIL NO.
FSR-2
NTS

TOWN OF GILBERT FIRE SPRINKLER RISER DETAIL

DETAIL NO.
FSR-2
NTS