



## NOTICE OF DECISION

May 31, 2018

**RE: DR14-17 S A ( DR18-99) University Building HSP Amendment**

Dear Applicant:

Staff has reviewed the revised drawings received for Administrative Design Review regarding changes to wall sign allowances and the addition of a monument sign. Staff has made the following findings:

- The project is consistent with the LDC and applicable design guidelines;
- The project is compatible with adjacent and nearby development; and
- The project design provides for safe and efficient provision of public services.

Based on the above, staff has approved this Administrative Design Review with the following attached information and conditions:

1. Amended Heritage Sign Plan for the University Building at 92 Vaughn Avenue.
  - a. Re-allocation of wall signage allowance for multiple tenants.
  - b. Addition of a Monument Sign on Ash Street.
  - c. Redesign of front grill for address signage.
  - d. The addition of addressing on the Vaughn/Ash corner canopy
  - e. Re-allocation of identity banners for multiple tenants.
  - f. Signage details for Tenant A – Park University within the amended parameters.

If you have any questions regarding the above, please contact me at (480) 503-6729.

Sincerely,

Amy Temes  
Senior Planner

A handwritten signature in black ink, appearing to be "A. Temes", written in a cursive style.

Attachments:

HSP – University Building stamped and dated 5/31/2018



**HERITAGE SIGN PLAN**

**May 16, 2018**

**Revised May 29, 2018**

**Prepared By:**

**THINKING CAPS DESIGN**

1425 north first street, suite 101  
phoenix, arizona 85004  
thinkingcaps.net

**APPROVED**

Minor Administrative Design Review

Case # DR14-17 S A (DR18-99)

Date May 31, 2018

**PROJECT NARRATIVE**

The 92 West Vaughn building is comprised of offices, classrooms, nursing simulation classrooms, assembly and support spaces. The building is approximately 87,000 gross square feet (GSF), four story facility with outdoor terrace space on the third level over the two-story volume assembly space. The fourth floor will be the highest occupied floor at 44- feet above fire department vehicle access. The vertical distance from grade plane to average height of roof structure is approximately 60-feet.

**SIGN NARRATIVE**

This Heritage Sign Plan (HSP) defines the intention to create an HSP within the Town of Gilbert’s Historic District. Establishing a signage program that will be consistent and compatible with the project architectural program and elements. The HSP also sets forth the signage typography, color palette, and the logo graphic standards that will continue to be applied in an appropriate scale and to the appropriate signage elements within the HSP.

The goal is to enhance the awareness of the Tenant’s location and accessibility to the campus through the use of forms, structures, materials, and scale while creating a welcoming environment for student, staff and community visitors. It is within this HSP that the site plan, sign drawings, and sign types are highlighted throughout, and have been developed specifically for this unique project within the Town of Gilbert Historic Downtown core.

The HSP sign elements will respond to the need to clearly identify the individual Tenants, with highly visible wall signage located near the building’s main entrance and access points, as well as on freestanding monumentation signage. The overall campus signage communicates the building identity as well as the building tenants and campus amenities.

**APPROVED**  
Minor Administrative Design Review  
Case # DR14-17 S A (DR18-99)  
Date May 31, 2018



owner:

project:  
92 W. VAUGHN  
SIGNAGE AND WAYFINDING  
HERITAGE SIGN PLAN

drawing type:  
**PROJECT  
INTRO**

start date:  
**04|25|2018**

revisions:  
**05|16|2018**

sign type/name:  
**HERITAGE  
SIGN PLAN  
PROJECT  
NARRATIVE**

sheet: **1.01**

**TABLE OF CONTENTS**

**SECTION I**

- 1.01 PROJECT NARRATIVE
- 1.02 GENERAL NOTES

**SECTION 2**

- 2.01 SITE PLAN

**SECTION 3**

IDENTITY SIGNAGE

- 3.01 ID-A : SOUTH ELEVATION WALL SIGNS
- 3.02 ID-A : NORTH ELEVATION WALL SIGNS
- 3.03 ID-B : FREESTANDING MONUMENT
- 3.04 ID-C : ENTRY GRILLWORK LETTERS
- 3.05 ID-D : CANOPY LETTERS

BANNER SIGNAGE

- 3.06 B-F : IDENTITY AND ART GRAPHICS

- 3.07 SIGN MATRIX

**FONT USE**

Akzidenz Grotesk - Medium Condensed

ABCDEFGHIJKLMNOPQRSTUVWXYZ  
abcdefghijklmnopqrstuvwxyz  
1234567890

**COLOR & MATERIALS PALETTE - FINAL COLORS SUBJECT TO REVIEW AND MATCH OF ONSITE COLORS**



Matthews Paint Brushed Aluminum  
to match existing entry  
metal grillwork



Banner Vinyl  
to be commercial grade  
exterior material



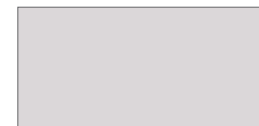
Stainless Steel Metal  
w/ a satin matte clearcoat



White Acrylic or Lexan  
w/ applied translucent 3M vinyl



Monument Stone  
to match or compliment the  
existing architectural stone palette



Monument Paint Color  
Pantone : 406C  
Matthews paint :  
Metro Gray (MP07425)



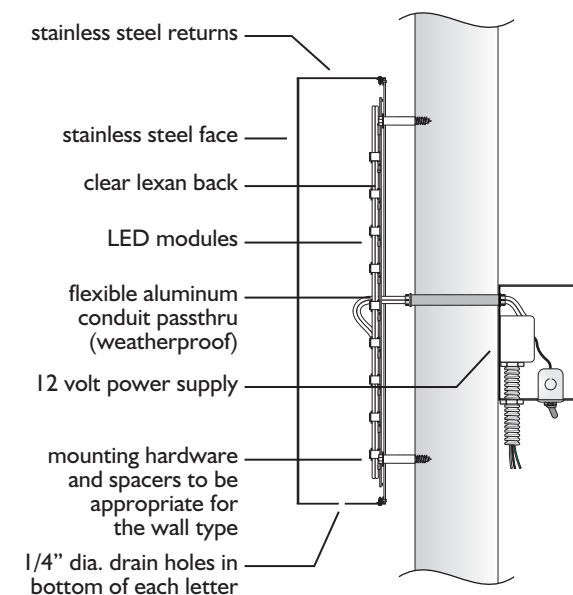
Monument Paint Color  
Pantone : 410C  
Matthews paint :  
Antique Bronze Mica (MP40689)



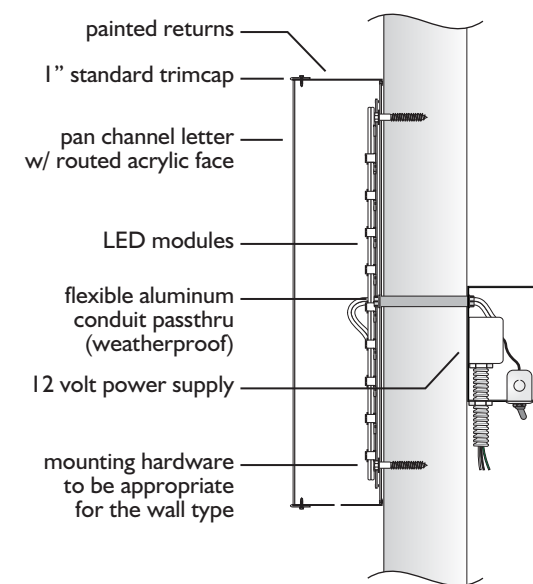
Monument Paint Color  
Pantone : 476C  
Matthews paint :  
Dopplebock (MP03364)

note: Town of Gilbert to review and approve final materials and colors

**SIGNAGE TYPICALS**



**TYPICAL REVERSE PAN CHANNEL DETAIL**  
-NOT TO SCALE



**TYPICAL PAN CHANNEL DETAIL**  
-NOT TO SCALE

**APPROVED**  
Minor Administrative Design Review  
Case # DR14-17 S A (DR18-99)  
Date May 31, 2018



**HERITAGE SIGN PLAN**

**SECTION 2**

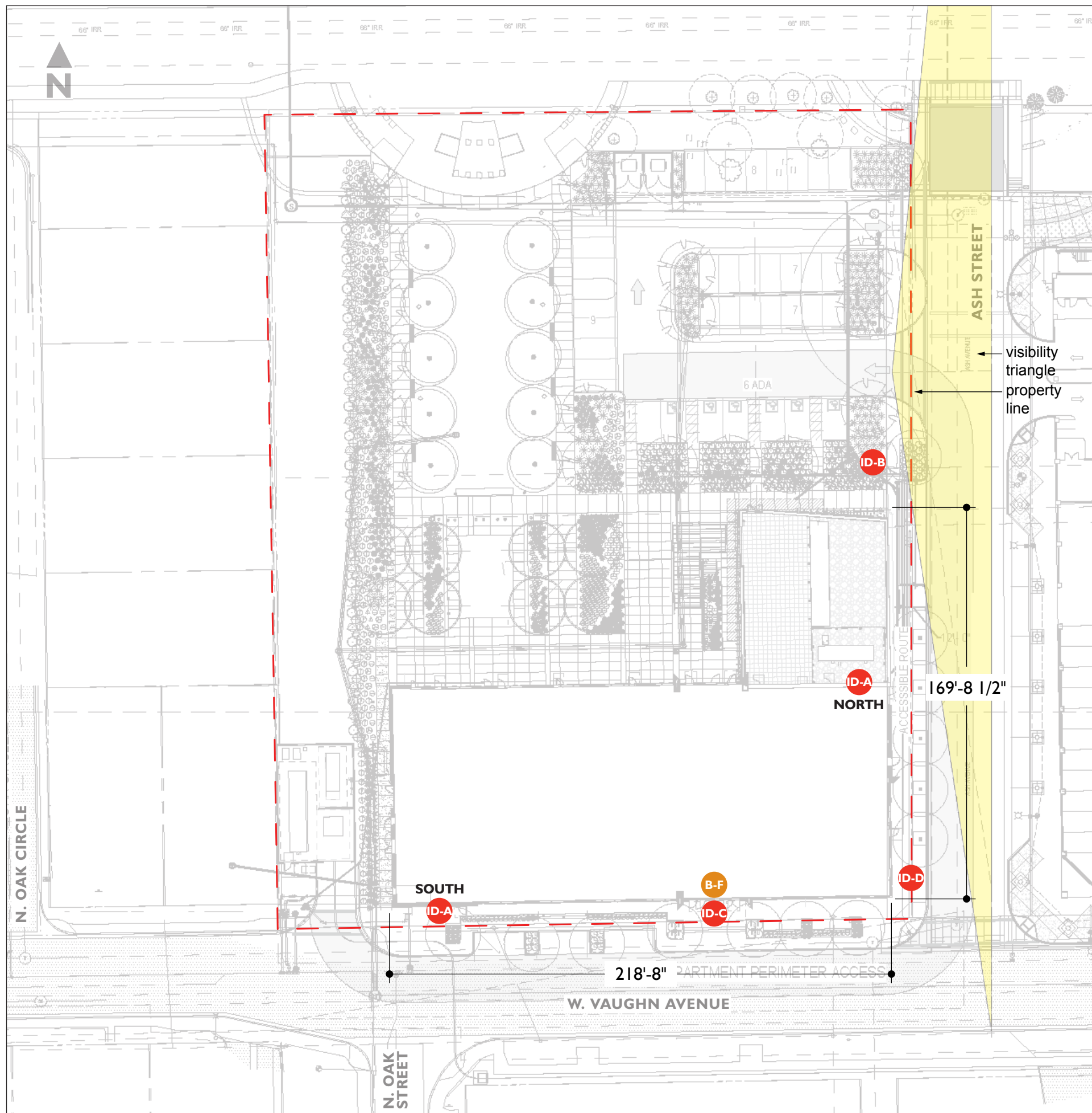
**SITE PLAN**

**APPROVED**

Minor Administrative Design Review

Case # DR14-17 S A (DR18-99)

Date May 31, 2018



**IDENTITY SIGNS**

- qty: 6 **ID-A TENANT IDENTITY:**  
Building Mounted
- qty: 1 **ID-B IDENTITY MONUMENT:**  
Freestanding
- qty: 1 **ID-C IDENTITY GRILLWORK FCO:**  
Framework Mounted
- qty: 1 **ID-D IDENTITY EYEBROW FCO:**  
Canopy Mounted

**BANNER SIGNS**

- qty: 3sets **B-F BANNER GRAPHICS:**  
Building Mounted

**BUILDING TOTAL WALL SIGNAGE ALLOWANCE:**  
 $218.66 + 218.66 = 437.32$   
 $437.32 \times 1.5 = 655.98$  SF  
 $655.98 \text{ SF} \times 25\% \text{ (HSP)} = 819.97$  Allowable Building SF

**ALLOWED BUILDING TOTAL WALL SIGNAGE:**  
819.97 SF

**PROPOSED SIGN SQUARE FOOTAGE:**  
 277.2 SF - Tenant A Signage SF Total  
 256.3 SF - Tenant B Signage SF Total  
 256.3 SF - Tenant C Signage SF Total  
 -----  
 789.8 SF - Building SF Total

**APPROVED**  
 Minor Administrative Design Review  
 Case # DR14-17 S A (DR18-99)  
 Date May 31, 2018



**HERITAGE SIGN PLAN**

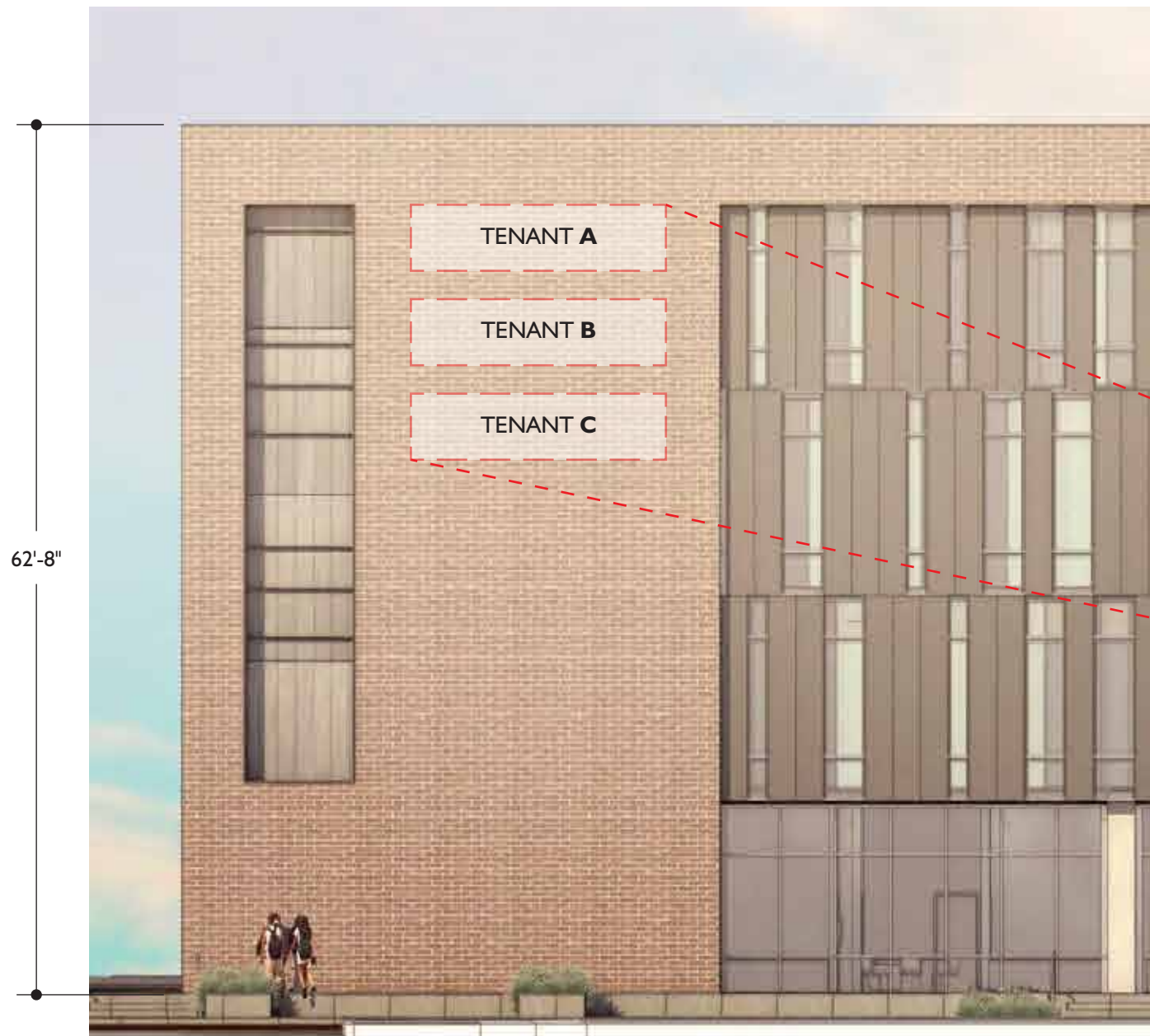
**SECTION 3**

SIGN DRAWINGS  
ELEVATIONS  
SIGN MATRIX

**APPROVED**  
Minor Administrative Design Review  
Case # DR14-17 S A (DR18-99)  
Date May 31, 2018



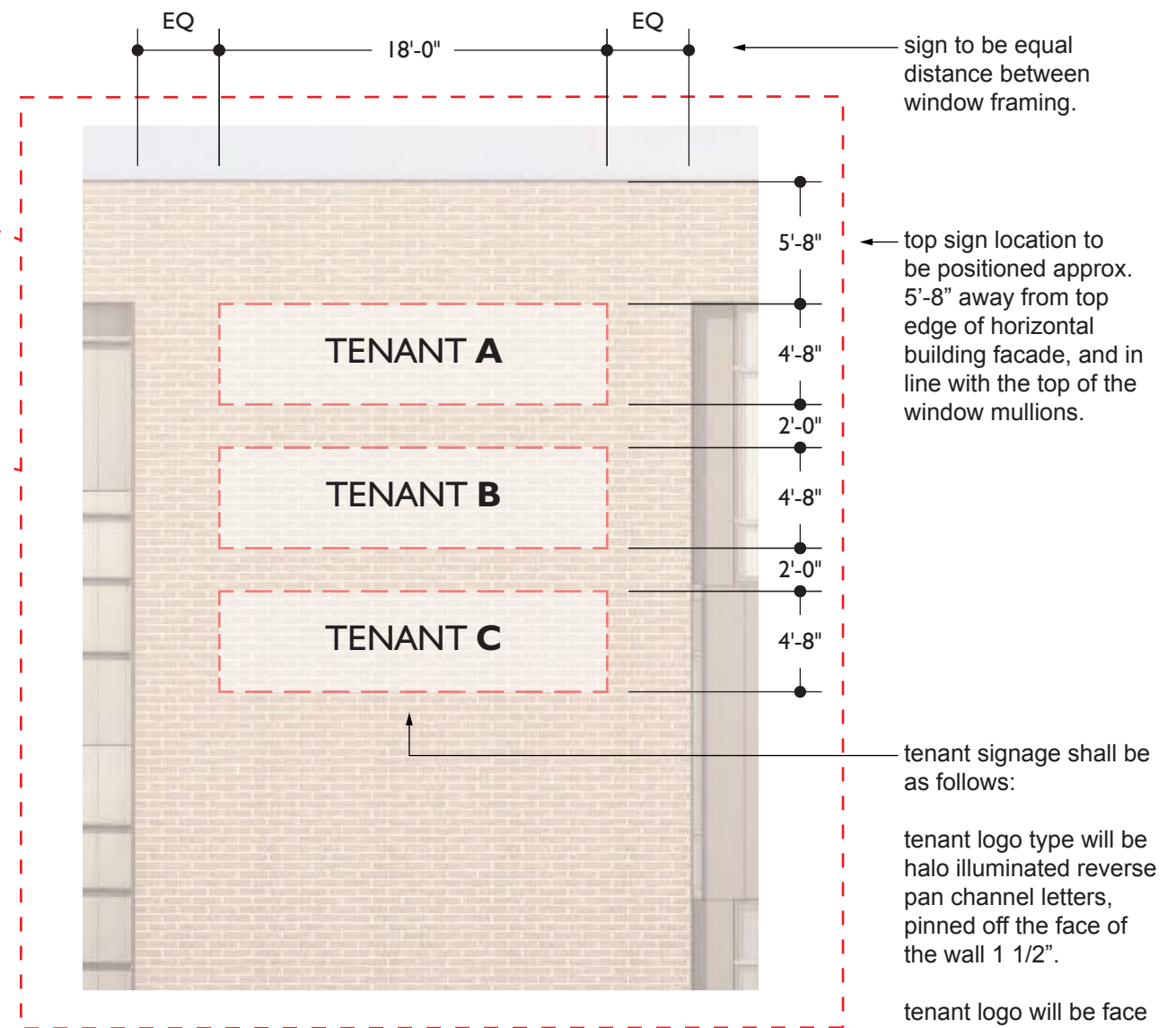
← 218'-8" →  
entire length of building elevation



62'-8"

**ID-A** ID-A TENANT IDENTITY : BUILDING SOUTH ELEVATION  
Building Wall Mounted Sign  
Not to scale

**MAXIMUM OF 84 SQUARE FEET  
PER TENANT SIGN AT THIS LOCATION**

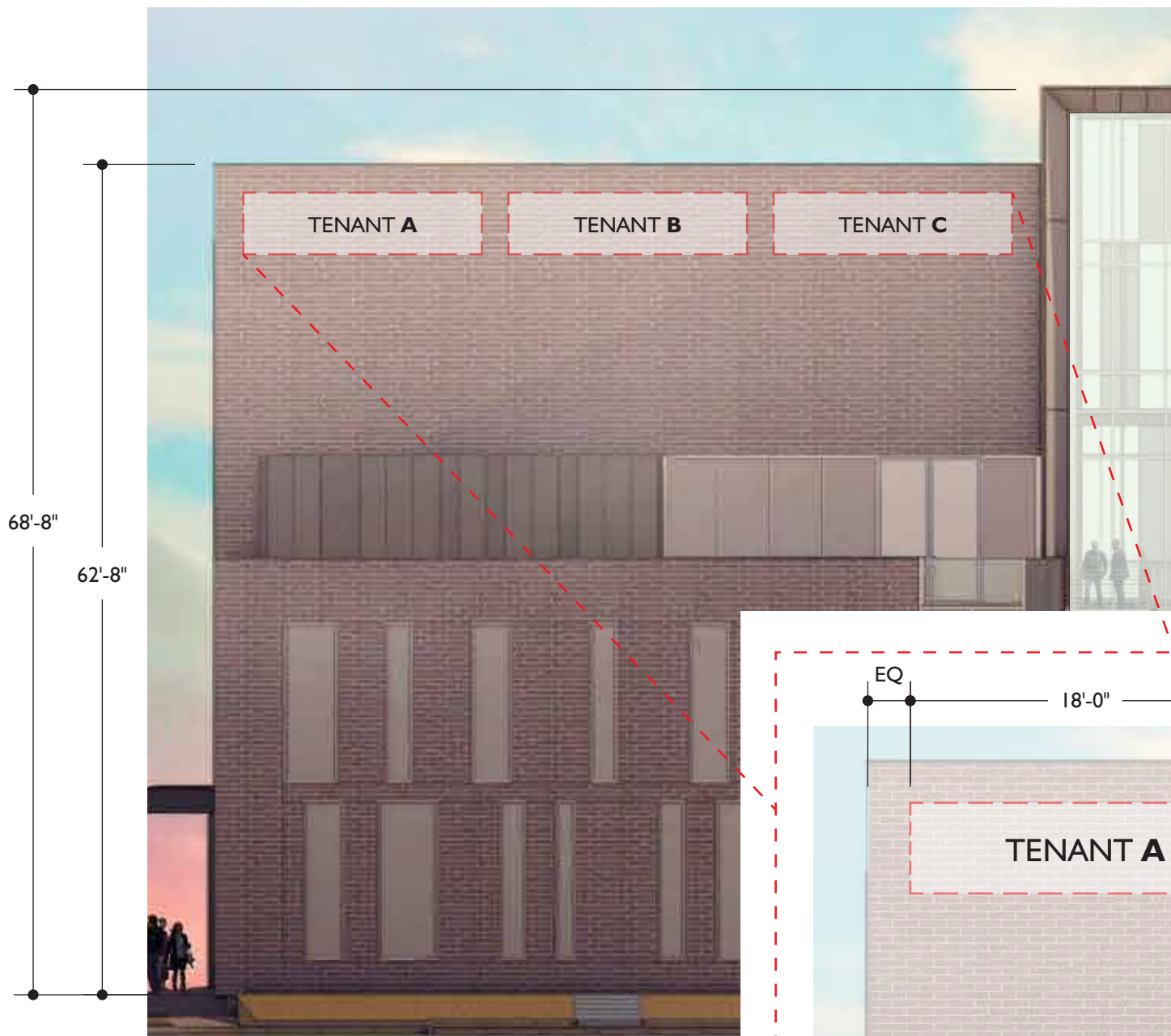


**SIGN CONFIGURATION DETAIL : SOUTH ELEVATION**  
Scale: 1/8" = 1'-0"

**APPROVED**  
Minor Administrative Design Review  
Case # DR14-17 S A (DR18-99)  
Date May 31, 2018



← 218'-8" →  
entire length of building elevation



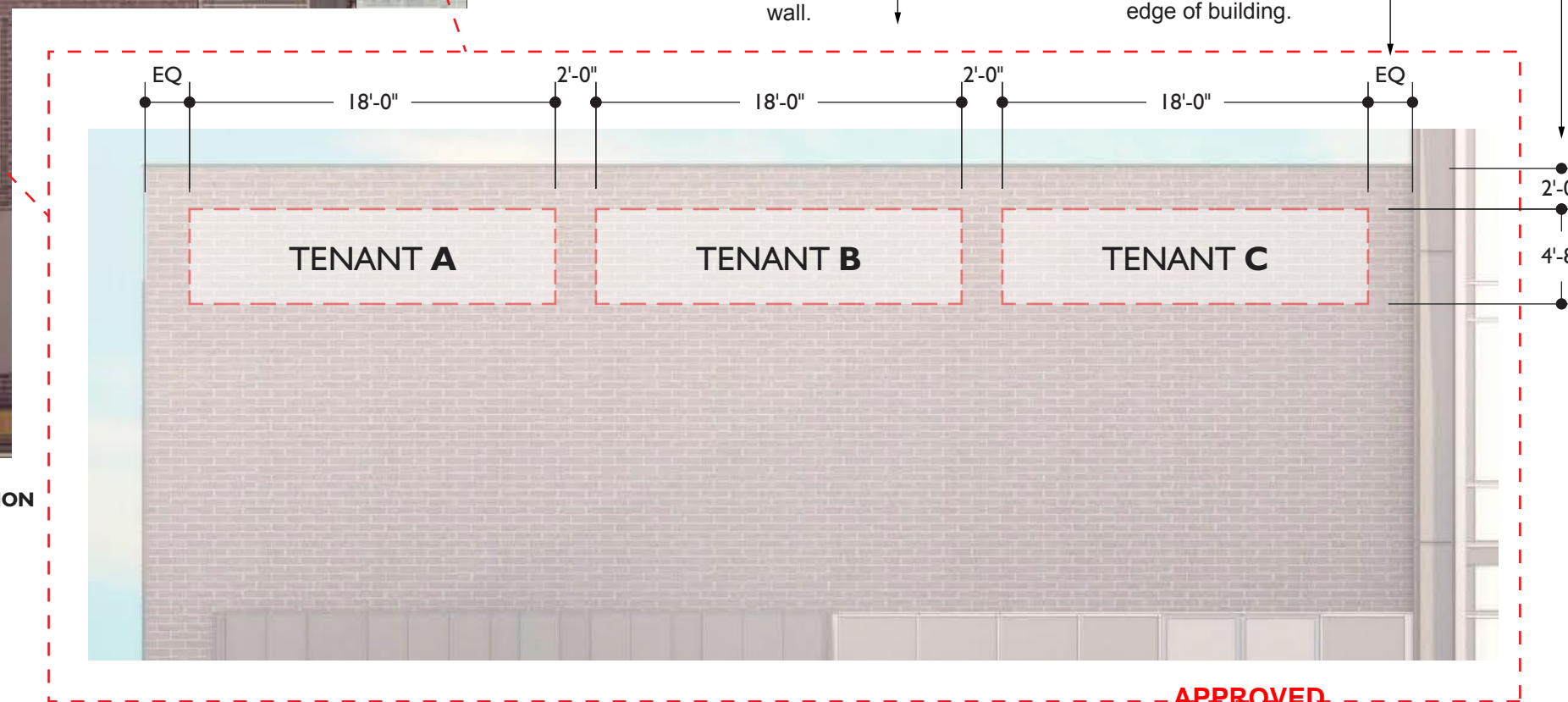
tenant signage shall be as follows:

tenant logo type will be halo illuminated reverse pan channel letters, pinned off the face of the wall 1 1/2".

tenant logo will be face lit pan channel, internally illuminated, and mounted flush with the face of the wall.

top of sign to be positioned 2'-0" away from top edge of horizontal building facade.

signage to be equal distance between window framing and edge of building.



**SIGN CONFIGURATION DETAIL : NORTH ELEVATION**  
Scale: 1/8" = 1'-0"

**ID-A** ID-A TENANT IDENTITY : BUILDING NORTH ELEVATION  
Building Wall Mounted Sign  
Not to scale

**MAXIMUM OF 84 SQUARE FEET  
PER TENANT SIGN AT THIS LOCATION**

**APPROVED**

Minor Administrative Design Review  
Case # DR14-17 S A (DR18-99)  
Date May 31, 2018

**SITE AND TENANT IDENTITY FREESTANDING MONUMENT**

This double-sided design will be positioned perpendicular to the street where it is located, to increase the visibility for passing vehicular traffic.

The freestanding monument sign takes cues from the building architecture, and will include a masonry base that compliments or closely matches the 4"x16" CMU blocks used elsewhere onsite. Painted metal colors used on the sign cabinet will compliment those found on the building's architecture.

Header typeface for "NINETY TWO WEST" is Akzidenz Grotesk Medium Condensed. Tenant panel logo type will be painted 3/8" thick aluminum and the individual tenant logo type standards shall apply to their panel. The logo type paint color will match Pantone 476C to ensure the appropriate and legible contrast between panel and tenant name.

**DIMENSIONS**

The freestanding monument sign will not exceed 7'0" in height, but may vary in width due to the display (static or digital) and the exact location of the monument in the available space.

**ILLUMINATION**

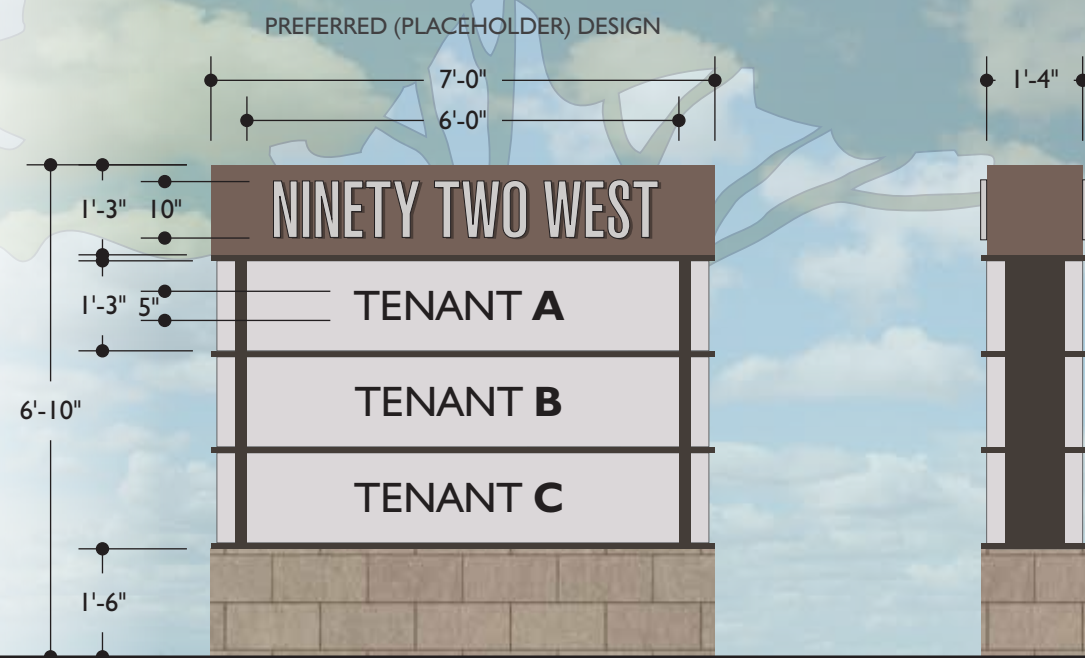
The main entry monument will be internally illuminated push thru identity letters that are halo lit, with the tenant panels being internally illuminated backlit surfaces.

*Note: All colors, materials, and sign size will be reviewed and approved by the Town of Gilbert prior to production.*



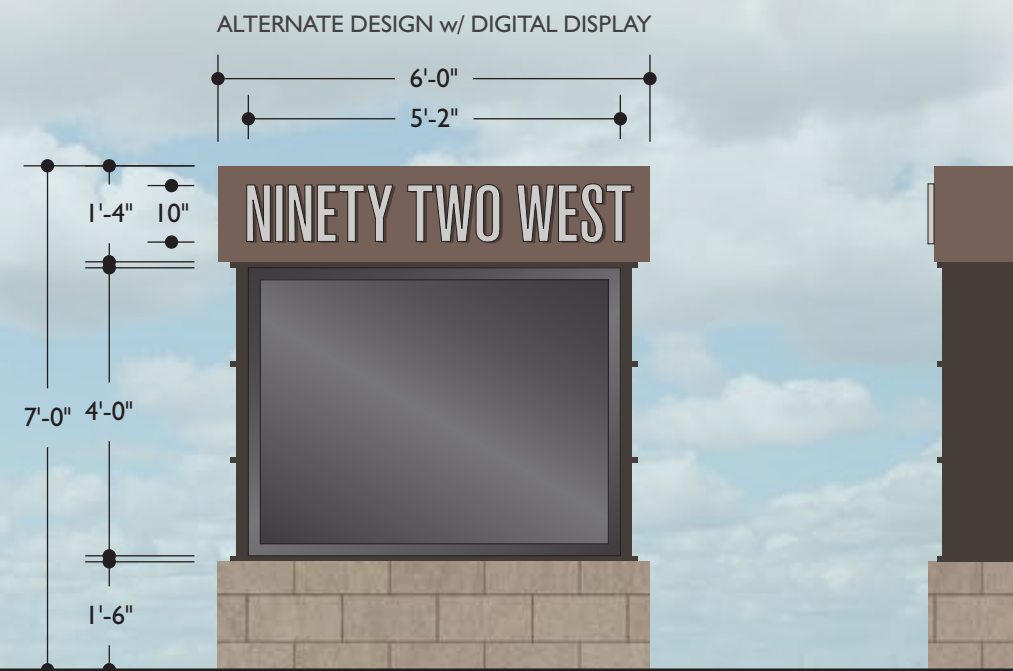
**EXISTING CONDITIONS & APPROXIMATE RENDERING**

Actual sign dimensions and placement to be confirmed prior to production.  
*Photo not to scale*



**ID-B IDENTITY MONUMENT**  
Scale: 3/8" = 1'-0"  
37.33 SF sign  
7.5 SF per tenant per side OR 15 SF total per tenant

SIDE VIEW



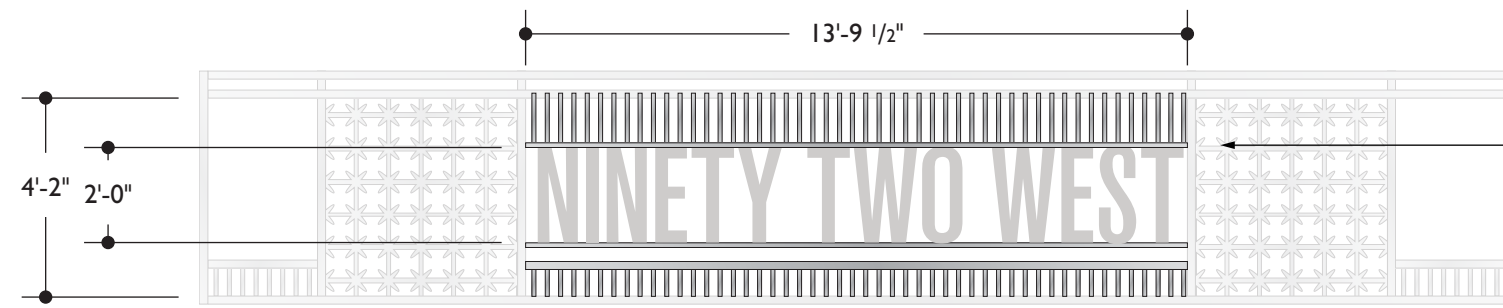
**ID-B IDENTITY MONUMENT**  
Scale: 3/8" = 1'-0"  
33 SF sign

SIDE VIEW

**APPROVED**  
Minor Administrative Design Review  
Case # DR14-17 S A (DR18-99)  
Date May 31, 2018



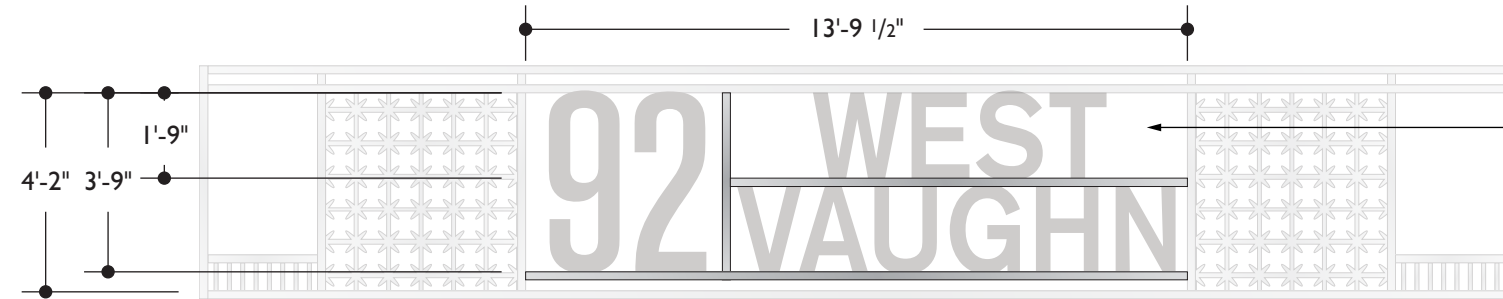
**92 WEST VAUGHN HERITAGE SIGN PLAN**  
SIGNAGE DETAILS | IDENTITY GRILLWORK LETTERS



1/4" thick FCO painted metal letters with a matte clearcoat finish, and will be attached to the existing metal frame using blind (hidden) attachments that are appropriate for exterior grade use.

**ID-C IDENTITY GRILLWORK LETTERS**  
Scale: 1/4" = 1'-0"  
42.36 SF sign

PREFERRED (PLACEHOLDER) DESIGN



1/4" thick FCO painted metal letters with a matte clearcoat finish, and will be attached to the existing metal frame using blind (hidden) attachments that are appropriate for exterior grade use.

**ID-C IDENTITY GRILLWORK LETTERS**  
Scale: 1/4" = 1'-0"  
42.36 SF sign

ALTERNATE DESIGN

**NOTE: GRILL ADDRESSING DOES NOT COUNT TOWARDS WALL SIGNAGE ALLOWANCE.**



**EXISTING CONDITIONS & METAL FRAMEWORK**  
Photo not to scale

**APPROVED**  
Minor Administrative Design Review  
Case # DR14-17 S A (DR18-99)  
Date May 31, 2018



owner:

project:  
92 W. VAUGHN  
SIGNAGE AND WAYFINDING  
HERITAGE SIGN PLAN

drawing type:

**ID-C  
IDENTITY  
GRILLWORK**

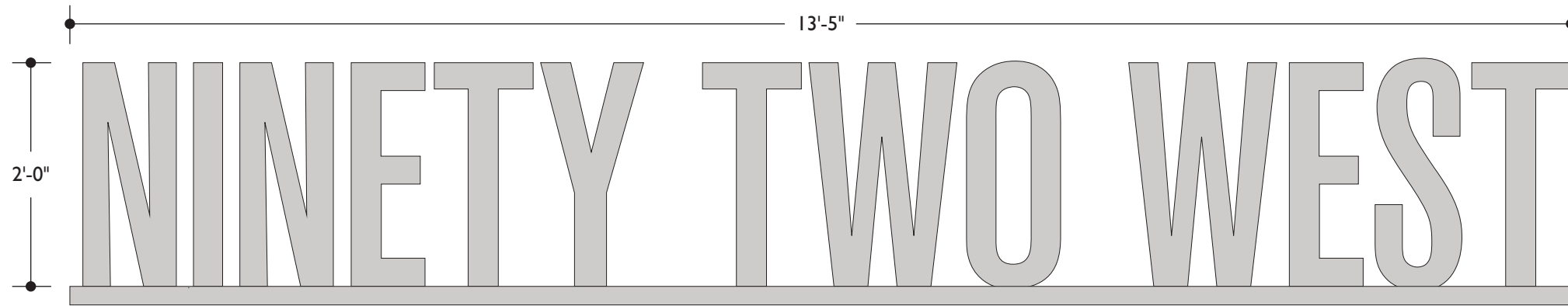
start date:  
**04|25|2018**

revisions:  
**05|16|2018**  
**05|29|2018**

sign type/name:

**HERITAGE  
SIGN PLAN  
SIGN DRAWING  
& ELEVATIONS**

sheet: **3.04**



← 1/4" thick FCO painted metal letters with a matte clearcoat finish, and will be mounted to the top of a painted 2" square tube runner using blind (hidden) attachments that are appropriate for exterior grade use.

tube runner is mounted to the top of an existing architectural canopy.

lighting preference will be an LED channel uplighting the face of the letters to increase visibility at night.

**ID-D IDENTITY CANOPY LETTERS**

Scale: 3/4" = 1'-0"  
26.83 SF sign

**NOTE: CANOPY ADDRESSING DOES NOT COUNT TOWARDS WALL SIGNAGE ALLOWANCE.**

PREFERRED (PLACEHOLDER) DESIGN



**SIGN CONFIGURATION DETAIL : EAST ELEVATION CANOPY**  
not to scale

**APPROVED**  
Minor Administrative Design Review  
Case # DR14-17 S A (DR18-99)  
Date May 31, 2018



owner:

project:  
92 W. VAUGHN  
SIGNAGE AND WAYFINDING  
HERITAGE SIGN PLAN

drawing type:  
**ID-D  
IDENTITY  
CANOPY**

start date:  
**04|25|2018**

revisions:  
**05|16|2018**  
**05|29|2018**

sign type/name:  
**HERITAGE  
SIGN PLAN  
SIGN DRAWING  
& ELEVATIONS**

sheet: **3.05**

← 218'-8" →  
entire length of building elevation

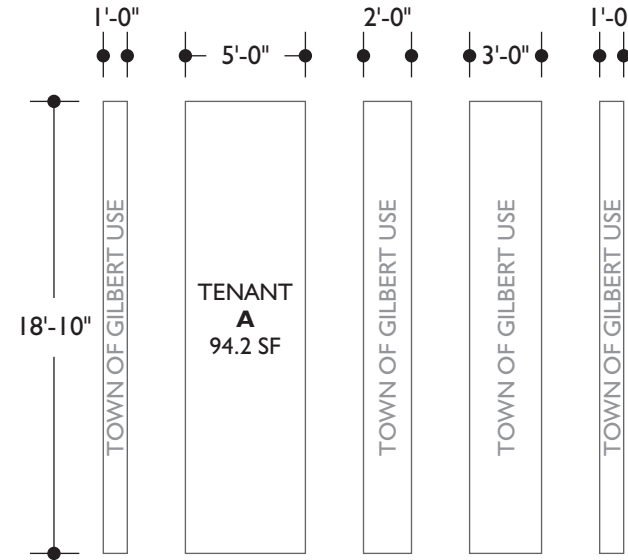


**B-F** B-F IDENTITY BANNERS : BUILDING SOUTH ELEVATION  
Building Mounted  
Not to scale

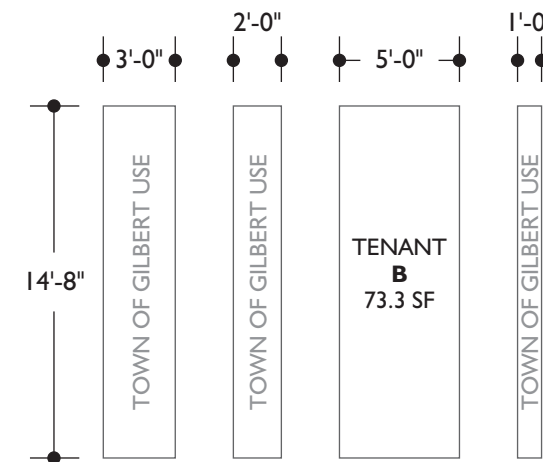
**MAXIMUM OF 94.2 SQUARE FEET  
PER TENANT SIGN AT THIS LOCATION**

**BUILDING IDENTITY BANNERS**

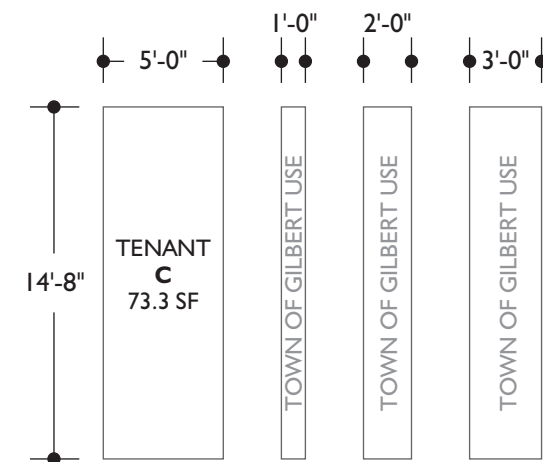
The building identity and tenant banners are permanent signs and are counted in the total signage allowance of the HSP.



TOP ROW OF BANNERS



MIDDLE ROW OF BANNERS



BOTTOM ROW OF BANNERS

**SIGN CONFIGURATION DETAIL : SOUTH ELEVATION**  
Scale: 1/8" = 1'-0"

**BANNER GRAPHICS**

A series of banner graphics as an architectural feature for the south exposure of the building, provide shade and identity for the building and its tenants. Various banner sizes and content are composed within the overall building entry volume.

Some of the banners may be more permanent while others may be changed out for updateable purposes. Banners are attached to the structural supports of the building system and are considered part of the permanent architectural statement.

The banners will be made up of a commercial grade exterior material with graphics printed directly to the substrate, and the quality of banner material will retain the design graphic, color and typography for multiple years beyond the initial installation date. The Tenant will be responsible for maintaining banners as needed to assure the design, color and typography are within a range of quality.

The Town of Gilbert will allow the individual tenants to update the banners and graphics as part of their brand without additional permitting process as long as the designs meet the original design intention, and do not exceed the approved total signage square feet of the approved HSP.

The banners demonstrated on this drawing sheet are an indication of the intent for the banner placement and possible designs and colors. The actual design and production of the banners may vary slightly within the overall concept and design as shown.

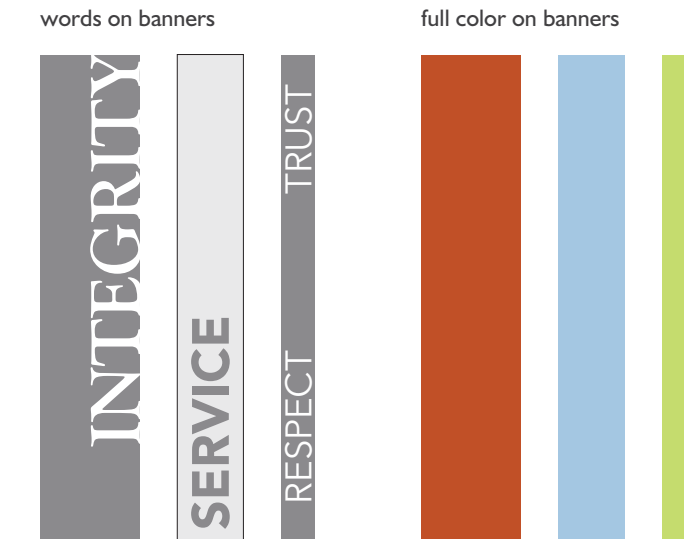
**ART BANNERS GRAPHICS**

Colored banners, graphic symbols or inspirational words will not reflect the individual tenants, and are not counted in the total Signage for HSP. The system of banners shown on the elevation only demonstrate the banner grid and overall size options.

The art banners will be comprised using any single color or color/word combination from the following guidelines.

- Inspirational and emotive words using standard fonts. Final fonts TBD
- Colors from a standard color palette. Final colors TBD

Art banner examples shown below are only examples and not the final artwork or colors.



note: final artwork tbd      note: final colors tbd

**APPROVED**

Minor Administrative Design Review

Case # DR14-17 S A (DR18-99)

Date May 31, 2018



	SIGN TYPE & FUNCTION	TOTAL NUMBER	MAXIMUM HEIGHT	MAXIMUM SIGN AREA	LIGHTING METHOD	GENERAL MATERIALS	DRAWING SHEET
BUILDING IDENTITY SIGNS	<b>ID-A</b> TENANT IDENTITY: Building Mounted	6	4'-8"	84 SF each location	Halo Lit and Internally Illuminated Cabinet	Painted Aluminum, Lexan, and Applied Vinyl	3.01, 3.02
	<b>ID-B</b> IDENTITY MONUMENT: Freestanding	1	7'-0"	37.33 SF	Internally Illuminated	Painted Aluminum, Acrylic, Applied Vinyl, and Masonry	3.03
	<b>ID-C</b> IDENTITY GRILLWORK FCO: Framework Mounted	1	3'-9"	42.36 SF	Non-Illuminated	Stainless Steel	3.04
	<b>ID-D</b> IDENTITY EYEBROW FCO: Canopy Mounted	1	1'-1"	7.76 SF	Non-Illuminated	Stainless Steel	3.05
BANNER SIGNS	<b>B-F</b> BANNER GRAPHICS: TENANT A Building Mounted	1 set	18'-10"	94.2 SF	Non-Illuminated	Commercial Grade Banner Material	3.06
	<b>B-F</b> BANNER GRAPHICS: TENANT B & C Building Mounted	2 sets	18'-10"	73.3 SF	Non-Illuminated	Commercial Grade Banner Material	3.06

**APPROVED**  
Minor Administrative Design Review  
Case # DR14-17 S A (DR18-99)  
Date May 31, 2018



owner:

project:  
92 W. VAUGHN  
SIGNAGE AND WAYFINDING  
HERITAGE SIGN PLAN

drawing type:  
**SIGN TYPE  
MATRIX**

start date:  
**04 | 25 | 2018**

revisions:  
**05 | 16 | 2018**

sign type/name:  
**HERITAGE  
SIGN PLAN  
SIGN MATRIX**

sheet: **3.07**



**HERITAGE SIGN PLAN**

**SECTION 4**

PARK UNIVERSITY  
SIGN DRAWINGS & ELEVATIONS

**APPROVED**

Minor Administrative Design Review

Case # DR14-17 S A (DR18-99)

Date May 31, 2018

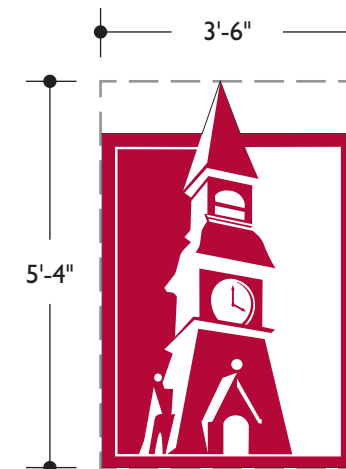
← 218'-8" →  
entire length of building elevation



62'-8"

**ID-A** ID-A TENANT IDENTITY : BUILDING SOUTH ELEVATION  
Building Wall Mounted Sign  
Not to scale

**MAXIMUM OF 84 SQUARE FEET  
PER TENANT SIGN AT THIS LOCATION**



Note: White or red lettering / accents are acceptable

← tenant logo sign will be a custom shaped pan channel logo cabinet mounted flush with the face of the wall, and LED internally illuminated.

**PARK UNIVERSITY WALL SIGN TYPICAL LAYOUT**

Scale: 3/8" = 1'-0"  
18.66 SF sign

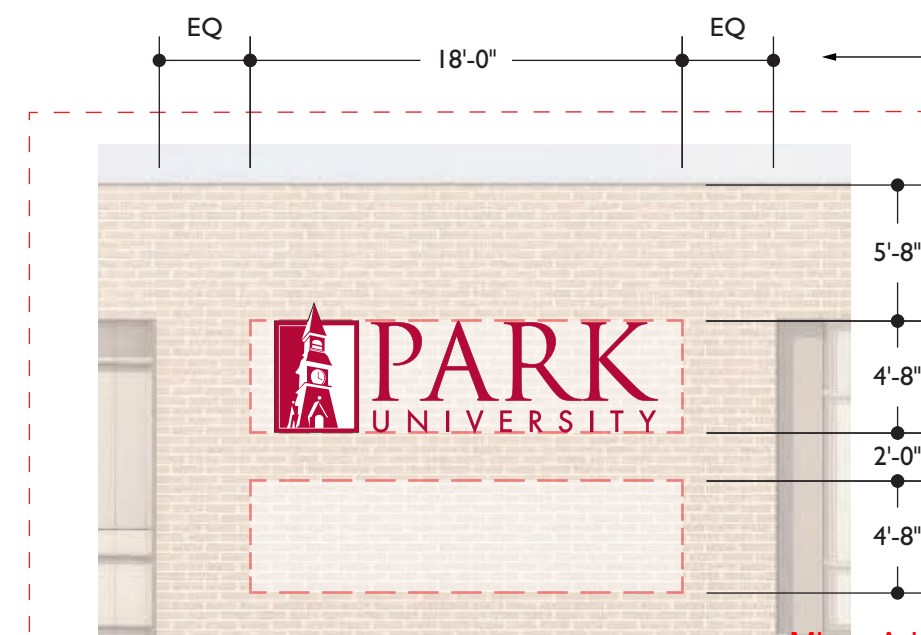


Note: White or red lettering is acceptable

← tenant logo type sign will be halo illuminated reverse pan channel letters pinned off the face of the wall 1 1/2".

**PARK UNIVERSITY WALL SIGN TYPICAL LAYOUT**

Scale: 3/8" = 1'-0"  
56 SF sign



← sign to be equal distance between window framing.

← top sign location to be positioned approx. 5'-8" away from top edge of horizontal building facade, and in line with the top of the window mullions.

**APPROVED**

Minor Administrative Design Review

Case # DR14-17 S A (DR18-99)

Date May 31, 2018

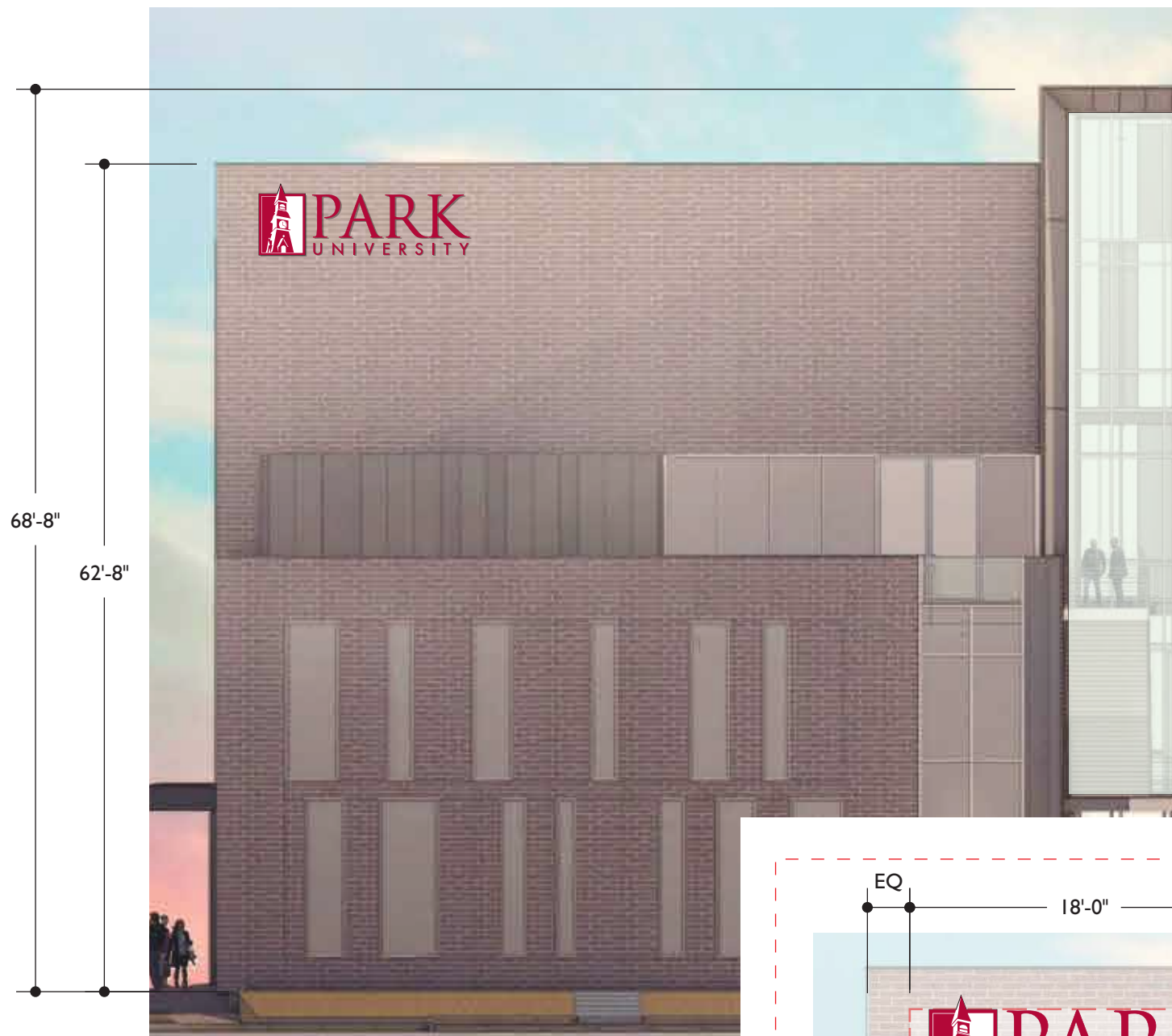
**SIGN CONFIGURATION DETAIL : SOUTH ELEVATION**

Scale: 1/8" = 1'-0"



**92 WEST VAUGHN HERITAGE SIGN PLAN**  
SIGNAGE DETAILS | NORTH ELEVATION WALL SIGNAGE

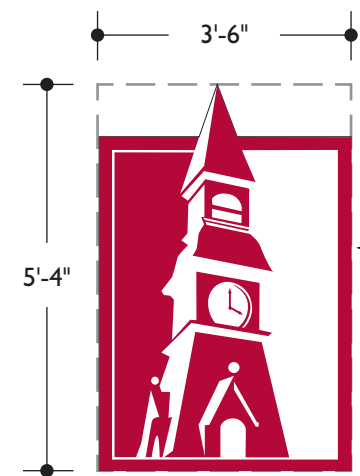
← 218'-8" →  
entire length of building elevation



68'-8"  
62'-8"

**ID-A** ID-A TENANT IDENTITY : BUILDING NORTH ELEVATION  
Building Wall Mounted Sign  
Not to scale

**MAXIMUM OF 55 SQUARE FEET  
PER TENANT SIGN AT THIS LOCATION**



Note: White or red lettering / accents are acceptable  
← tenant logo sign will be a custom shaped pan channel logo cabinet mounted flush with the face of the wall, and LED internally illuminated.

**PARK UNIVERSITY WALL SIGN TYPICAL LAYOUT**  
Scale: 3/8" = 1'-0"  
18.66 SF sign

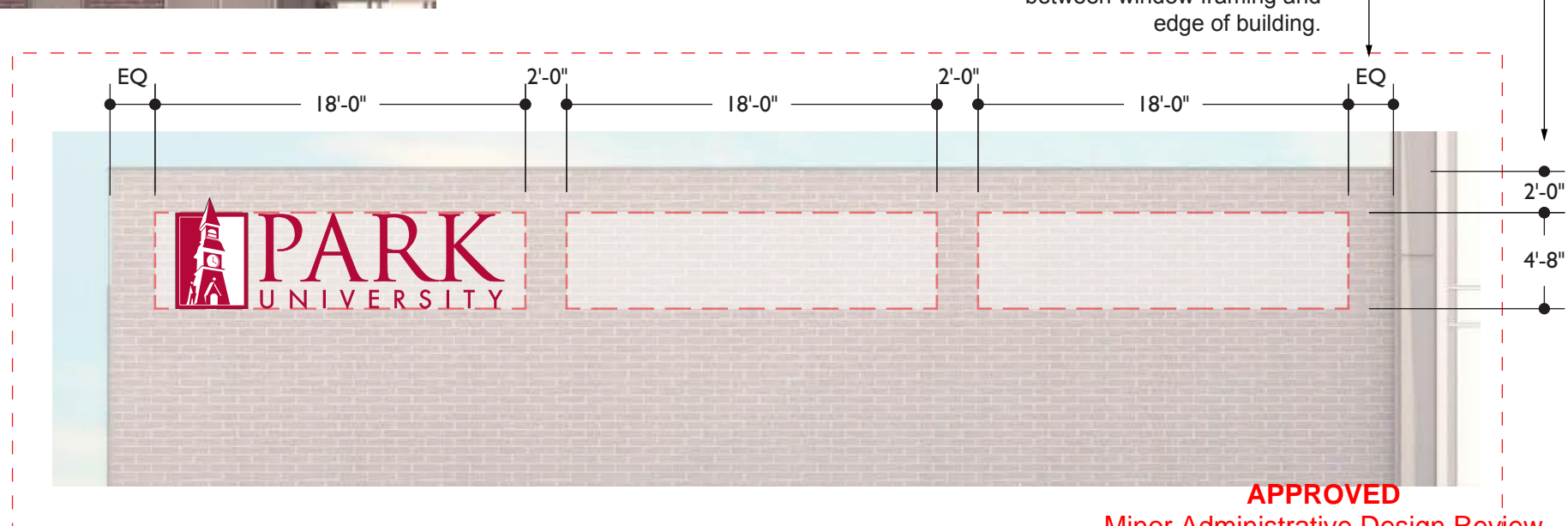


Note: White or red lettering is acceptable  
← tenant logo type sign will be halo illuminated reverse pan channel letters pinned off the face of the wall 1 1/2".

**PARK UNIVERSITY WALL SIGN TYPICAL LAYOUT**  
Scale: 3/8" = 1'-0"  
56 SF sign

top of sign to be positioned 2'-0" away from top edge of horizontal building facade.

signage to be equal distance between window framing and edge of building.



**SIGN CONFIGURATION DETAIL : NORTH ELEVATION**  
Scale: 1/8" = 1'-0"

**APPROVED**  
Minor Administrative Design Review  
Case # DR14-17 S A (DR18-99)  
Date May 31, 2018

**SITE AND TENANT IDENTITY FREESTANDING MONUMENT**

This double-sided design will be positioned perpendicular to the street where it is located, to increase the visibility for passing vehicular traffic.

The freestanding monument sign takes cues from the building architecture, and will include a masonry base that compliments or closely matches the 4"x16" CMU blocks used elsewhere onsite. Painted metal colors used on the sign cabinet will compliment those found on the building's architecture.

Header typeface for "NINETY TWO WEST" is Akzidenz Grotesk Medium Condensed. Tenant panel logo type will be painted 3/8" thick aluminum and the individual tenant logo type standards shall apply to their panel. The logo type paint color will match Pantone 476C to ensure the appropriate and legible contrast between panel and tenant name.

**DIMENSIONS**

The freestanding monument sign will not exceed 7'0" in height, but may vary in width due to the display (static or digital) and the exact location of the monument in the available space.

**ILLUMINATION**

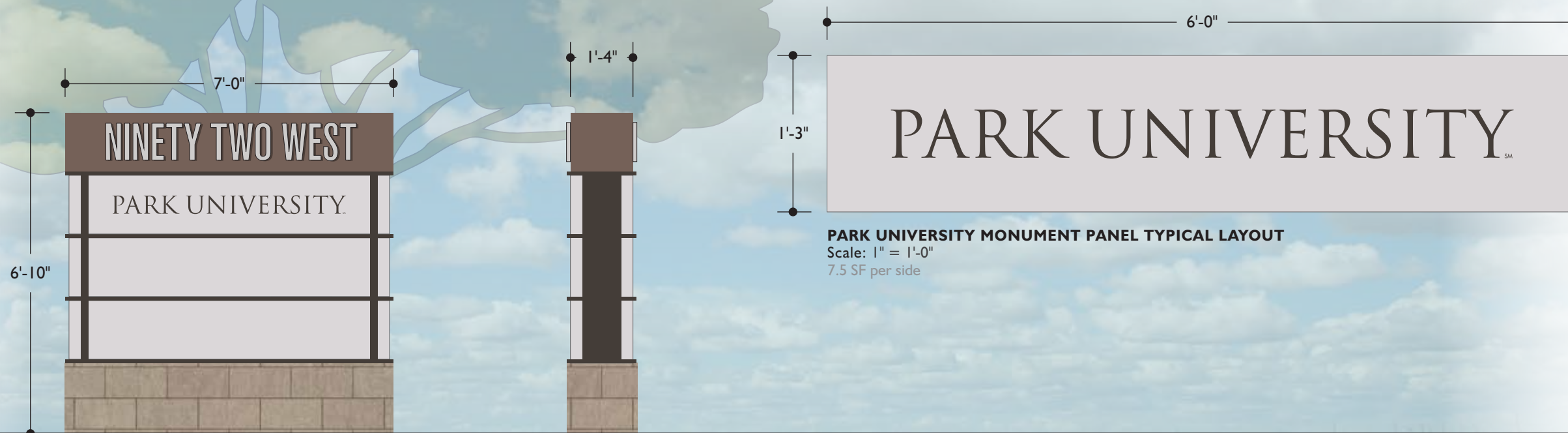
The main entry monument will be internally illuminated push thru identity letters that are halo lit, with the tenant panels being internally illuminated backlit surfaces.

*Note: All colors, materials, and sign size will be reviewed and approved by the Town of Gilbert prior to production.*



**EXISTING CONDITIONS & APPROXIMATE RENDERING**

Actual sign dimensions and placement to be confirmed prior to production.  
*Photo not to scale*



**PARK UNIVERSITY MONUMENT PANEL TYPICAL LAYOUT**  
Scale: 1" = 1'-0"  
7.5 SF per side

**ID-B ID-B IDENTITY MONUMENT**  
Scale: 3/8" = 1'-0"  
7.5 SF per side OR 15 SF total

SIDE VIEW

**APPROVED**  
Minor Administrative Design Review  
Case # DR14-17 S A (DR18-99)  
Date May 31, 2018



owner:  
**92 W. VAUGHN**  
SIGNAGE AND WAYFINDING  
HERITAGE SIGN PLAN

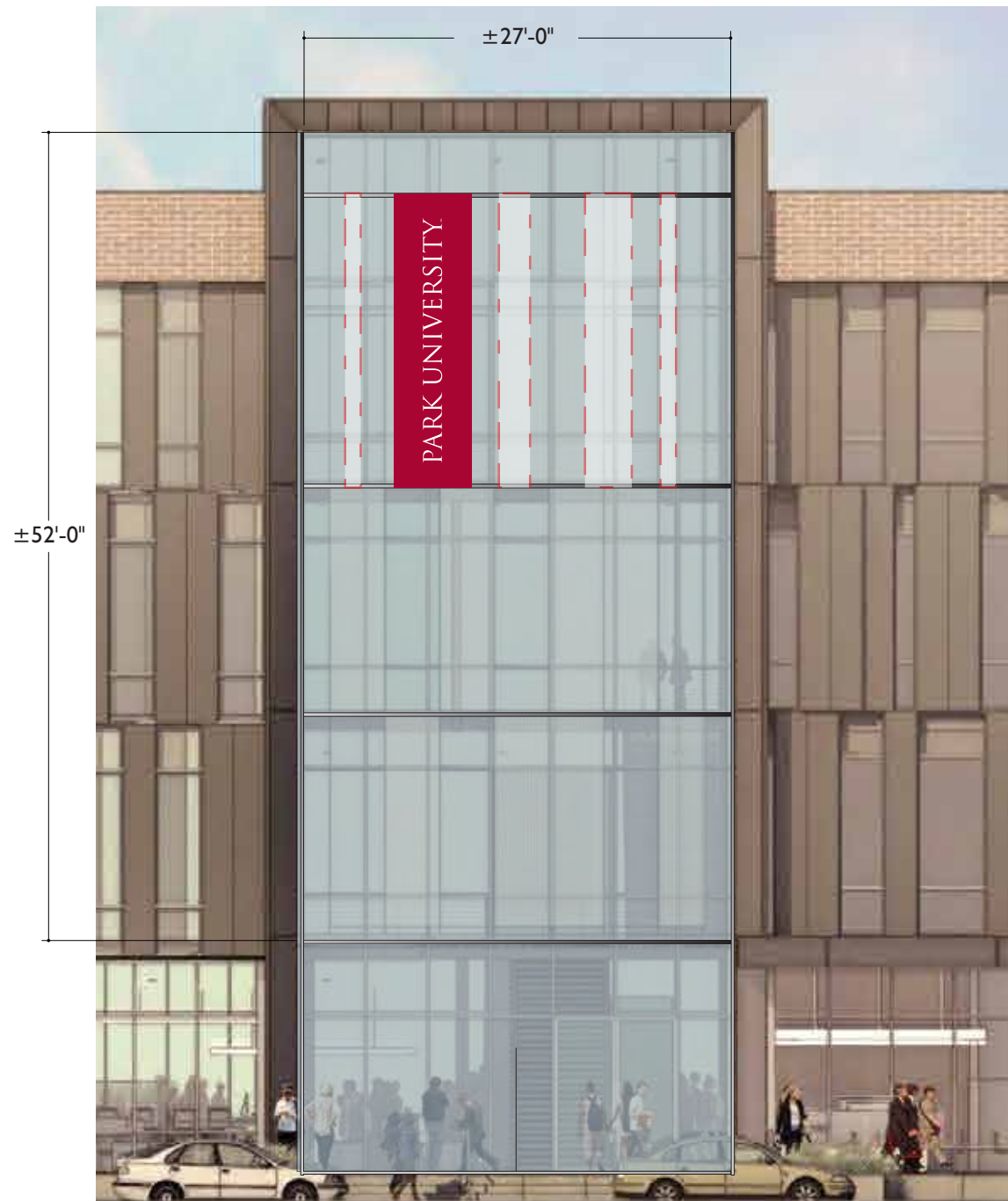
drawing type:  
**ID-B**  
**IDENTITY**  
**MONUMENT**  
start date:  
**04|25|2018**  
revisions:  
**05|16|2018**  
**05|29|2018**

sign type/name:  
**HERITAGE**  
**SIGN PLAN**  
SIGN DRAWING  
& ELEVATIONS

sheet: **4.03**

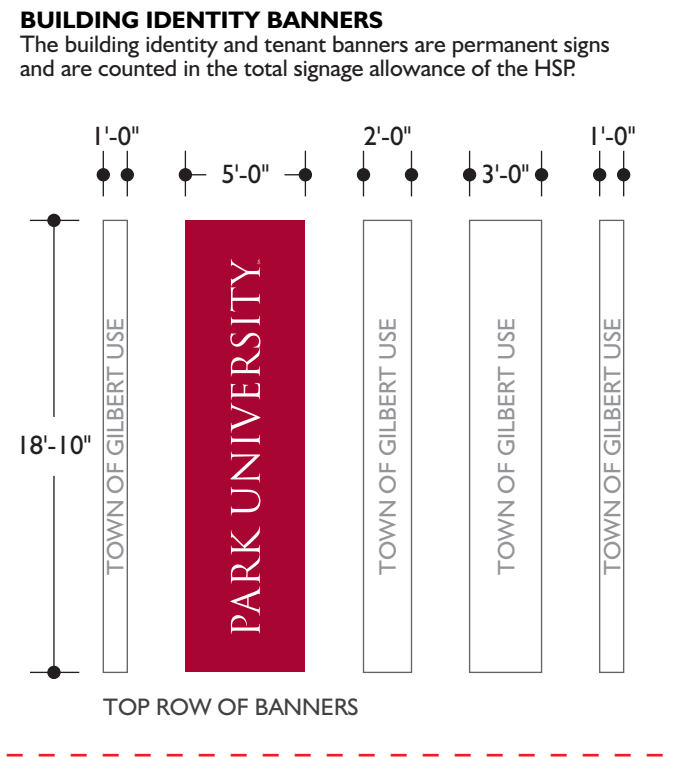


← 218'-8" →  
entire length of building elevation



**B-F** B-F IDENTITY BANNERS : BUILDING SOUTH ELEVATION  
Building Mounted  
Not to scale

**MAXIMUM OF 94.2 SQUARE FEET  
PER TENANT SIGN AT THIS LOCATION**



**SIGN CONFIGURATION DETAIL : SOUTH ELEVATION**  
Scale: 1/8" = 1'-0"  
94.2 SF sign

**BANNER GRAPHICS**

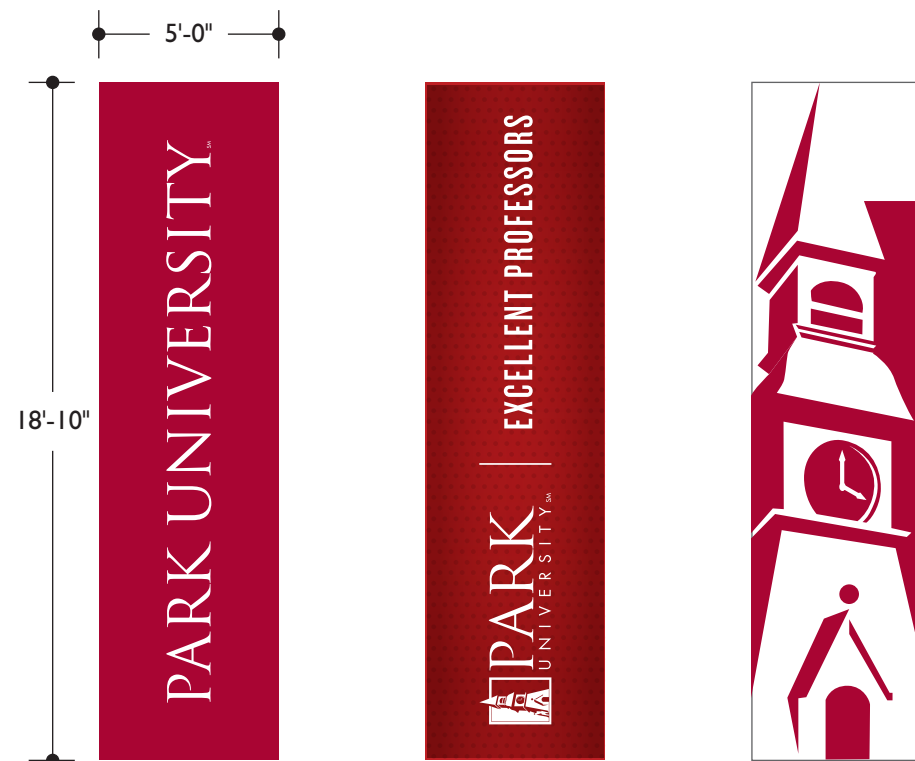
A series of banner graphics as an architectural feature for the south exposure of the building, provide shade and identity for the building and its tenants. Various banner sizes and content are composed within the overall building entry volume.

Some of the banners may be more permanent while others may be changed out for updateable purposes. Banners are attached to the structural supports of the building system and are considered part of the permanent architectural statement.

The banners will be made up of a commercial grade exterior material with graphics printed directly to the substrate, and the quality of banner material will retain the design graphic, color and typography for multiple years beyond the initial installation date. The Tenant will be responsible for maintaining banners as needed to assure the design, color and typography are within a range of quality.

The Town of Gilbert will allow the individual tenants to update the banners and graphics as part of their brand without additional permitting process as long as the designs meet the original design intention, and do not exceed the approved total signage square feet of the approved HSP.

The banners demonstrated on this drawing sheet are an indication of the intent for the banner placement and possible designs and colors. The actual design and production of the banners may vary slightly within the overall concept and design as shown.



BANNER LAYOUT TYPICAL OPTIONS  
Scale: 3/16" = 1'-0"

note: all banner examples shown are only examples and not the final artwork or colors.

**APPROVED**  
Minor Administrative Design Review  
Case # DR14-17 S A (DR18-99)  
Date May 31, 2018

	SIGN TYPE & FUNCTION	TOTAL NUMBER	MAXIMUM HEIGHT	MAXIMUM SIGN AREA	LIGHTING METHOD	GENERAL MATERIALS	DRAWING SHEET
BUILDING IDENTITY SIGNS	ID-A PARK UNIVERSITY IDENTITY: Building Mounted	2	4'-8"	84 SF each location	Halo Lit and Internally Illuminated Cabinet	Painted Aluminum, Lexan, and Applied Vinyl	4.01, 4.02
	ID-B PARK UNIVERSITY MONUMENT PANEL: Freestanding	2 panels	1'-3"	15 SF	Internally Illuminated	Painted Aluminum, Acrylic, Applied Vinyl, and Masonry	4.03
BANNER SIGNS	B-F BANNER GRAPHICS: TENANT A Building Mounted	1 set	18'-10"	94.2 SF	Non-Illuminated	Commercial Grade Banner Material	4.04

**PARK UNIVERSITY SIGN SF ALLOWANCE:**

84 SF - ID-A South Elevation Sign SF Total  
 84 SF - ID-A North Elevation Sign SF Total  
 15 SF - ID-B Monument Sign SF Total  
 94.2 SF - B-F Banner Sign SF Total  
 -----  
 277.2 SF - Building SF Total



owner:

project:  
92 W. VAUGHN  
SIGNAGE AND WAYFINDING  
HERITAGE SIGN PLAN

drawing type:  
**SIGN TYPE  
MATRIX**

start date:  
**04|25|2018**

revisions:  
**05|16|2018**  
**05|29|2018**

sign type/name:  
**HERITAGE  
SIGN PLAN  
SIGN MATRIX**

sheet: **4.05**