



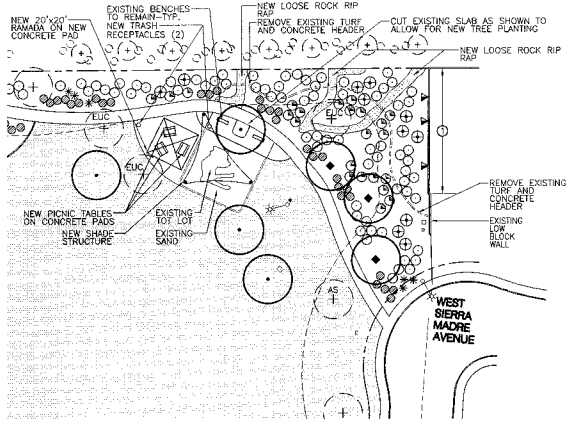
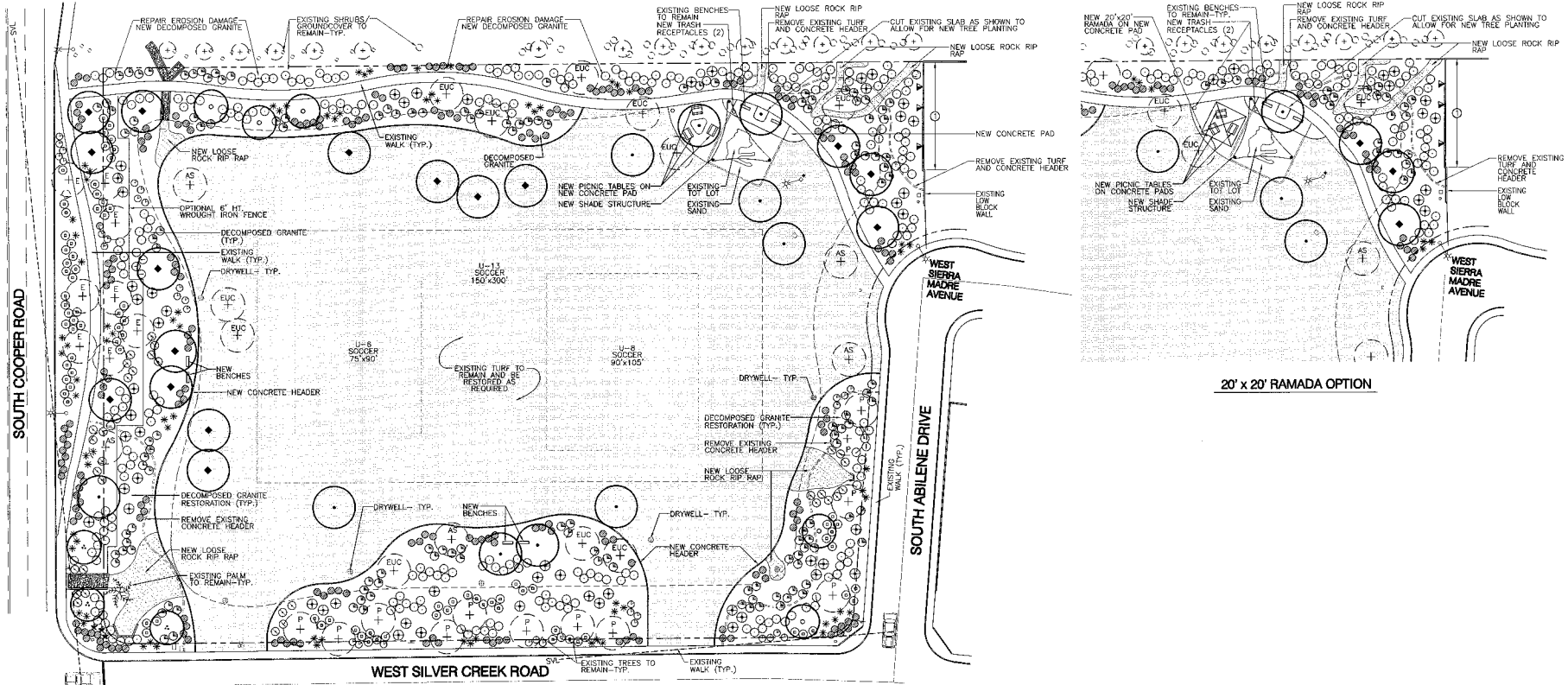
SOUTH COOPER ROAD

WEST SILVER CREEK ROAD

SOUTH ABILENE DRIVE

WEST SIERRA MADRE AVENUE

WEST SIERRA MADRE AVENUE



20' x 20' RAMADA OPTION

**LANDSCAPE MATERIAL LEGEND**

BOTANICAL NAME COMMON NAME	SIZE
<b>TREES</b>	
CHILOPSIS LINEARIS DESERT WILLOW	24" BOX
DALBERGIA SISSOO SISSOO	24" BOX
PARKINSONIA PRAECOX PALM BREA	36" BOX
ULMUS PARVIFOLIA EVERGREEN ELM	24" BOX
<b>SHRUBS, GROUND COVERS, AND ACCENTS</b>	
AGAVE DESERTIANA AGAVE	5 GAL.
BOGOSANNIVALEA 'LA JOLLA' BOGOSANNIVALEA	5 GAL.
CAESALPINA MEXICANA MEXICAN BIRD OF PARADISE	5 GAL.
CALLIMONDA CALIFORNICA DALL FERRY CUSTER	5 GAL.
HESPERALOE PARVIFLORA RED YUCCA	5 GAL.
LANTANA 'NEW GOLD' NEW GOLD LANTANA	1 GAL.
LEUCOPHYLLIUM LAMCANNIAE RIO BRAVO SAGE	5 GAL.
MUHLENBERGIA CAPILLARIS PINK MILLY	5 GAL.
MUHLENBERGIA RIGENS DEER GRASS	5 GAL.
NERIUM OLEANDER 'PETITE PINK' OLEANDER	5 GAL.
ROSGARINUS GEFIONALIS 'HUNTINGTON CARPET' DWARF ROSEMARY	1 GAL.
SIMMONDSIA CHINENSIS JOJOBA	5 GAL.
<b>TURF - SEED (NUMEX SAHARA) OVERSEEDED 'MIDIRON' SOO IF PLANTED OUT OF SEASON CONC. HEADER</b>	

**ROCK GROUND COVER**  
NEW LOOSE ROCK RIP-RAP AS SHOWN ON PLAN WATCH SURROUNDING D.G. COLOR DECOMPOSED GRANITE. INSTALL 7" MIN. DEPTH IN ALL LANDSCAPE PLANTING AREAS. SIZE AND COLOR 1/2" SCREENED 'YAPAHAI CORAL'

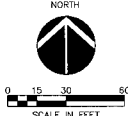
**EXISTING TREE LEGEND**  
+ EXISTING TREE TO REMAIN  
\* AGAVE TREE  
▲ AMERICAN SUMAC  
□ LANCE-OLEANDER  
◇ DESERT WILLOW  
○ JACARANDA  
○ EXISTING PALM TREE TO REMAIN  
○ EXISTING SHRUB OR GROUND COVER TO REMAIN

**WALL LEGEND NOTES**  
① EXISTING INTEGRAL COLOR BLOCK WALL MAINTAINED BY THE TOWN OF GILBERT

**SITE AMENITIES LIST**

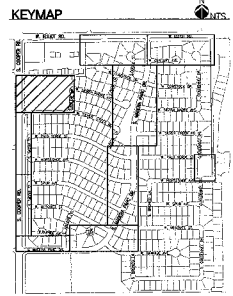
EQ.	MANUF.	MODEL#	COLOR	QTY.
20' x 20' RAMADA	AMERICAN BLDG.	NAVAJ0	BRONZE	1
SHADE STRUCTURE	SHADE SALES	CUSTOM	BLUE	1
BENCH	PLAY WORLD	ZZXX1412	BROWN	4
PICNIC TABLE	WABASH VALLEY	9G201	BROWN	3
TRASH RECEPTACLE	PLAYWORLD	ZZXX1414	BROWN	2
W-GROUND MOUNT	PLAYWORLD	ZZXX1415	BROWN	2
OPT. METAL COVER	PLAYWORLD	ZZXX1418	SAND	2
PLASTIC CONTAINER	PLAYWORLD	ZZXX899		2

SITE AMENITIES AVAILABLE FROM DAVE BANG AND ASSOC.  
P.O. BOX 9760 MESA, AZ 85214 (480)892-0288 OR 1-800-456-7953



**GENERAL NOTES**

- ALL TREES WITHIN THE SIGHT VISIBILITY TRIANGLES (SVT) TO BE TRIMMED UP AND MAINTAINED AT A 7' MIN. CANOPY HEIGHT, AND ALL GROUND COVER TO BE MAINTAINED AT A MAX HEIGHT OF 24". NO SHRUBS ARE ALLOWED IN THE SIGHT VISIBILITY TRIANGLE.
- MAINTAIN A 7' MIN. CLEARANCE FROM ALL FIRE HYDRANTS IN ALL DIRECTIONS TO NEW OR ANY LANDSCAPING.
- ALL EXISTING SHRUB PLANTINGS TO BE REMOVED AND REPLACED AS SHOWN, UNLESS OTHERWISE INDICATED.
- CALL BLUE STAKE (505-263-1100) TO LOCATE UNDERGROUND UTILITIES BEFORE STARTING ANY UNDERGROUND WORK.
- NO PLANT SUBSTITUTIONS, TYPE OR QUANTITY DEVIATIONS FROM THE APPROVED LANDSCAPE PLAN(S) WITHOUT PRIOR APPROVAL FROM THE TOWN OF GILBERT.
- ALL PLANT MATERIAL AND SPECIFICATIONS TO CONFORM TO THE ARIZONA NURSERYMAN ASSOCIATION STANDARDS.
- WHERE DECOMPOSED GRANITE OR TURF ABOUT A CONC. HEADER OR OTHER PAVEMENT EDGE, CONTRACTOR SHALL ADJUST GRADE AS REQUIRED TO PROVIDE A MINIMUM 1" BETWEEN TOP OF HEADER OR PAVEMENT EDGE AND TOP OF 2" DEPTH DECOMPOSED GRANITE OR TOP OF TURF. DO NOT REMOVE EXTRA MATERIAL FROM SITE. (SEE DETAILS) EXCAVATED MATERIAL TO BE UNIFORMLY SPREAD IN ADJACENT LANDSCAPE AREAS.
- SVL=TOWN OF GILBERT SIGHT VISIBILITY LINE
- REPAIR EROSION DAMAGED AREAS WITH FILL DIRT AND RETURN TO ORIGINAL GRADE BEFORE DECOMPOSED GRANITE RESTORATION.
- LANDSCAPING ALONG COOPER ROAD TO BE COORDINATED WITH MASONRY WORK AND ENTRY MONUMENT RENOVATION BY OTHERS UNDER SEPARATE CONTRACT.



NEW TURF LAYOUT PRELIMINARY PLAN  
Parkway Improvement District 07-10  
**MADERA PARC**

PREPARED FOR: Town of Gilbert

DESIGNED BY: MFI  
DRAWN BY: BCD  
CHECKED BY: DCM  
PROJECT NO: 06422  
DATE: 5/2008

DRAWING NO.  
**L-2**  
SHEET 1 OF 2

NO.	DATE	DESCRIPTION

McCloskey • Peltz, Inc.  
LANDSCAPE ARCHITECTS  
1000 West Elster Road Suite 110 Tempe, Arizona 85284  
Phone: (480) 938-4777 Fax: (480) 938-1774



MATCHLINE B SEE BELOW RIGHT

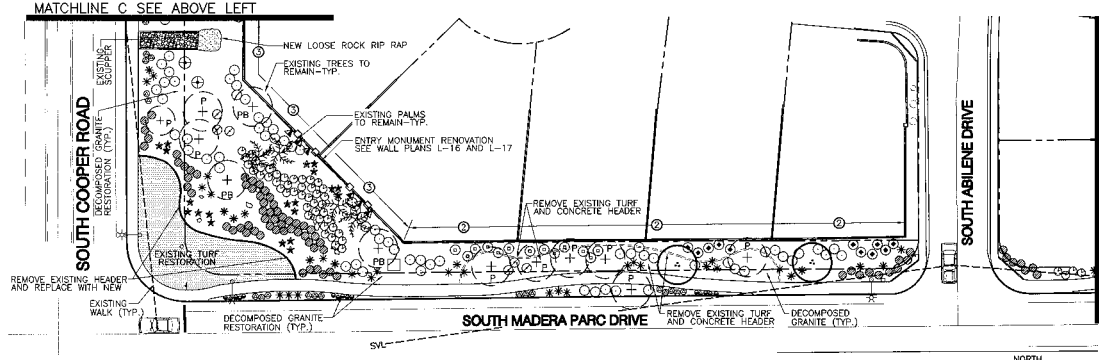
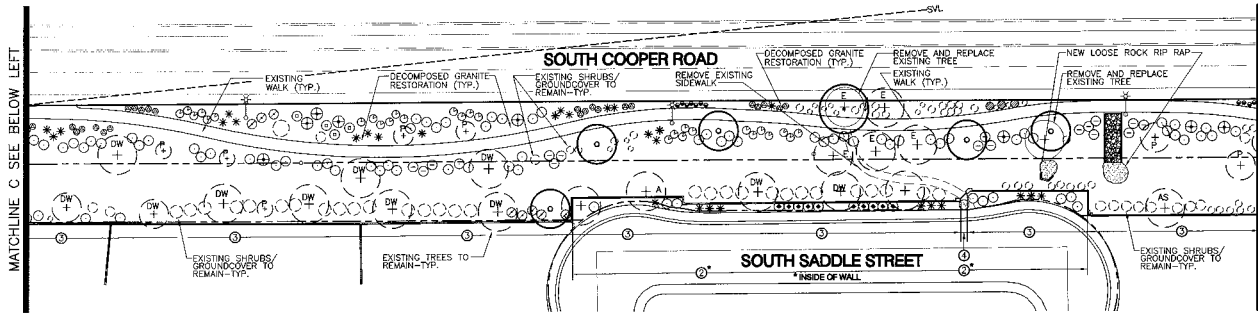
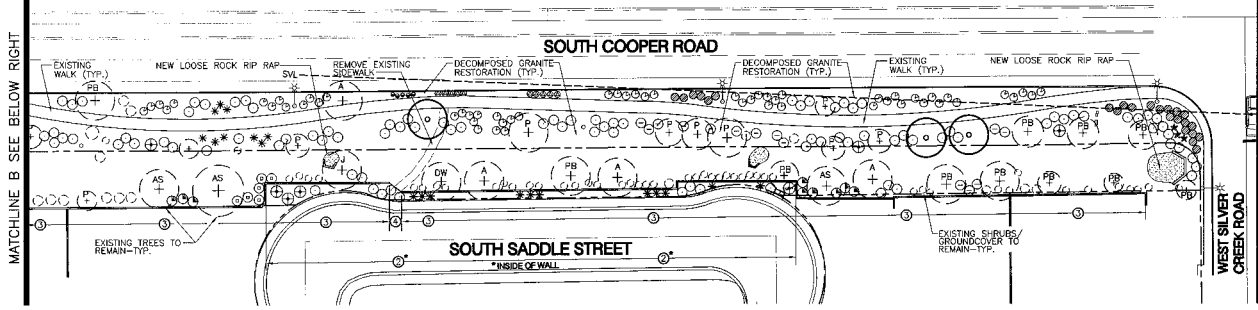
MATCHLINE C SEE BELOW LEFT

MATCHLINE A SEE DRAWING L-2

MATCHLINE B SEE ABOVE LEFT

MATCHLINE C SEE ABOVE LEFT

MATCHLINE D SEE DRAWING L-4



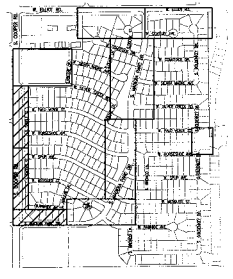
LANDSCAPE MATERIAL LEGEND

BOTANICAL NAME	COMMON NAME	SIZE
▲	ACACIA SMALLI	24" BOX
○	SWEET ACACIA	
○	CHILOPSIS LINEARIS	24" BOX
○	DESERT WILLOW	
○	DALBERGIA SISSOO	24" BOX
○	SISSOO	
○	PARKINSONIA PRAECOX	36" BOX
○	PALO BREA	
○	ULMUS PARVIFOLIA	24" BOX
○	EVERGREEN ELM	
★	SHRUBS, GROUND COVERS, AND ACCENTS	
★	AGAVE DESMETIANA	5 GAL.
★	AGAVE	
▲	BOUGHANVILLEA 'LA JOLLA'	5 GAL.
▲	BOUGHANVILLEA	
⊕	CASUALPINA MEXICANA	5 GAL.
⊕	MEXICAN BIRD OF PARADISE	
⊕	CALLIXANDRA CALIFORNICA	5 GAL.
⊕	BAJA FAIRY DUSTER	
⊕	CASSIA PHYLLODENA	5 GAL.
⊕	SILVER LEAF CASSIA	
⊕	CHRYSACTINIA MEXICANA	1 GAL.
⊕	DAMPANITA	
⊕	HESPERALOE PARVIFLORA	5 GAL.
⊕	RED YUCCA	
⊕	LANTANA 'NEW GOLD'	1 GAL.
⊕	NEW GOLD LANTANA	
⊕	LEUCOPHYLLUM CANDIDUM	5 GAL.
⊕	'THUNDER CLOUD'	
⊕	LEUCOPHYLLUM LANGHAMIAE	5 GAL.
⊕	'RO BRAWO' SAGE	
⊕	MULLENBERGIA CAPILLARIS	5 GAL.
⊕	PINK MUHLY 'REGAL MIST'	
⊕	MULLENBERGIA RICENS	5 GAL.
⊕	DEER GRASS	
⊕	HERILUM OLEANDER	5 GAL.
⊕	'PETITE PINK' OLEANDER	
⊕	ROSMARINUS OFFICINALIS	1 GAL.
⊕	'HUNTINGTON CARPET'	
⊕	SWAGE ROSEMARY	
⊕	RUPELLA BRITTONIANA 'KATIE'	1 GAL.
⊕	'KATIE RUPELLA'	
⊕	RUPELLA PENINSULARIS	5 GAL.
⊕	DESERT RUPELLA	
⊕	SIMONDSIA CHINENSIS	5 GAL.
⊕	JUJUBA	
⊕	TETRAENEURIS ACAULIS	1 GAL.
⊕	ANGELITA (LAI)	
■	TURF-SEED (NUMEX SAHARA)	
■	OVERSEEDED TURF/RYOY SCG IF	
■	PLANTED OUT OF SEASON	
—	CONC. HEADER	
—	ROCK GROUND COVER	
—	NEW LOOSE ROCK	
—	TRIMMED UP AND MAINTAINED AS SHOWN	
—	OR PLAN MATCH SURROUNDING D.G. COLOR	
—	DECOMPOSED GRANITE RESTORATION	
—	MIN. DEPTH IN ALL	
—	LANDSCAPE PLANTING AREAS	
—	SIZE AND COLOR: COOPER RD. 1/2" SCREENED	
—	'MADONNA CORAL' ALL OTHER LANDSCAPE PLANTING	
—	AREAS- 1/2" SCREENED MADISON GOLD	

- EXISTING TREE LEGEND**
- EXISTING TREES TO REMAIN
  - ▲ ASH TREE ELM TREE PINE TREE
  - ⊕ MEXICAN BIRD OF PARADISE CHILOPSIS LINEARIS
  - DW=DESERT WILLOW J=JACARANDAS-BISSOO TREE
  - EXISTING PALM TREE TO REMAIN
  - EXISTING SHRUB OR GROUND COVER TO REMAIN
- WALL LEGEND NOTES**
- ① EXISTING INTEGRAL COLOR BLOCK WALL MAINTAINED BY THE TOWN OF GILBERT
  - ② EXISTING STUCCO AND PAINTED WALL MAINTAINED BY THE TOWN OF GILBERT
  - ③ EXISTING STUCCO AND PAINTED THEME WALL WITH TILE ACCENT BAND MAINTAINED BY THE TOWN OF GILBERT
  - ④ CONTRACTOR SHALL REPLACE ALL MISSING, CRACKED, CHIPPED, WORN, OR PAINTED TERRA COTTA TILE IN THEME WALL TILE ACCENT BAND. (FIELD VERIFY)
  - ⑤ CONTRACTOR SHALL REPLACE ALL MISSING CRACKED OR SEPARATING TILE GROUT IN THEME WALL TILE ACCENT BAND. (FIELD VERIFY)
  - ⑥ EXISTING NEW FENCE MAINTAINED BY THE TOWN OF GILBERT (TYPICAL)

GENERAL NOTES

- ALL TREES WITHIN THE SIGHT VISIBILITY TRIANGLES (SVT) TO BE TRIMMED UP AND MAINTAINED AT A 7' MIN. CANOPY HEIGHT, AND ALL GROUND COVER TO BE MAINTAINED AT A MAX. HEIGHT OF 24". NO SHRUBS ARE ALLOWED IN THE SIGHT VISIBILITY TRIANGLE.
- MAINTAIN A 7' MIN. CLEARANCE FROM ALL FIRE HYDRANTS IN ALL DIRECTIONS TO NEW OR ANY LANDSCAPING.
- ALL EXISTING SHRUB PLANTINGS TO BE REMOVED AND REPLACED AS SHOWN, UNLESS OTHERWISE INDICATED.
- CALL BLUE STAKE (602-263-1100) TO LOCATE UNDERGROUND UTILITIES BEFORE STARTING ANY UNDERGROUND WORK.
- NO PLANT SUBSTITUTIONS, TYPE OR QUANTITY DEVIATIONS FROM THE APPROVED LANDSCAPE PLAN(S) WITHOUT PRIOR APPROVAL FROM THE TOWN OF GILBERT.
- ALL PLANT MATERIAL AND SPECIFICATIONS TO CONFORM TO THE ARIZONA NURSEYMAN ASSOCIATION STANDARDS.
- WHERE DECOMPOSED GRANITE OR TURF ADJUT A CONC. HEADER OR OTHER PAVEMENT EDGE, CONTRACTOR SHALL ADJUST GRADE AS REQUIRED TO PROVIDE A MINIMUM 1" BETWEEN TOP OF HEADER OR PAVEMENT EDGE AND TOP OF 2" DEPTH DECOMPOSED GRANITE OR TOP OF TURF. DO NOT REMOVE EXTRA MATERIAL FROM SITE. (SEE DETAILS) EXCAVATED MATERIAL TO BE UNIFORMLY SPREAD IN ADJACENT LANDSCAPE AREAS.
- SVL=TOWN OF GILBERT SIGHT VISIBILITY LINE
- REPAIR EROSION DAMAGED AREAS WITH FILL DIRT AND RETURN TO ORIGINAL GRADE BEFORE DECOMPOSED GRANITE RESTORATION.
- LANDSCAPING ALONG COOPER ROAD TO BE COORDINATED WITH MASONRY WORK AND ENTRY MONUMENT RENOVATION BY OTHERS UNDER SEPARATE CONTRACT.



REVISIONS	NO.	DATE	DESCRIPTION



McCloskey • Peltz, Inc.  
 LANDSCAPE ARCHITECTS  
 1000 N. GILBERT AVENUE, SUITE 110  
 GILBERT, ARIZONA 85234  
 PHONE: (480) 841-4777  
 FAX: (480) 841-9774



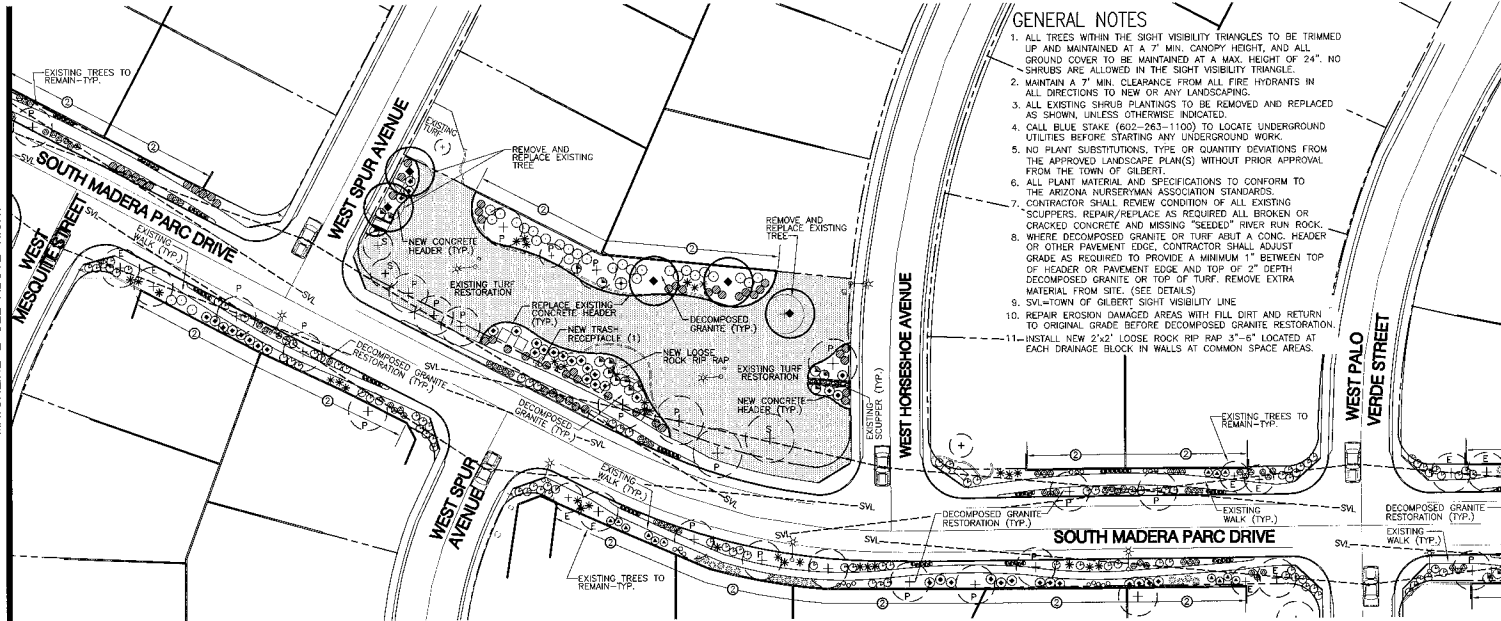
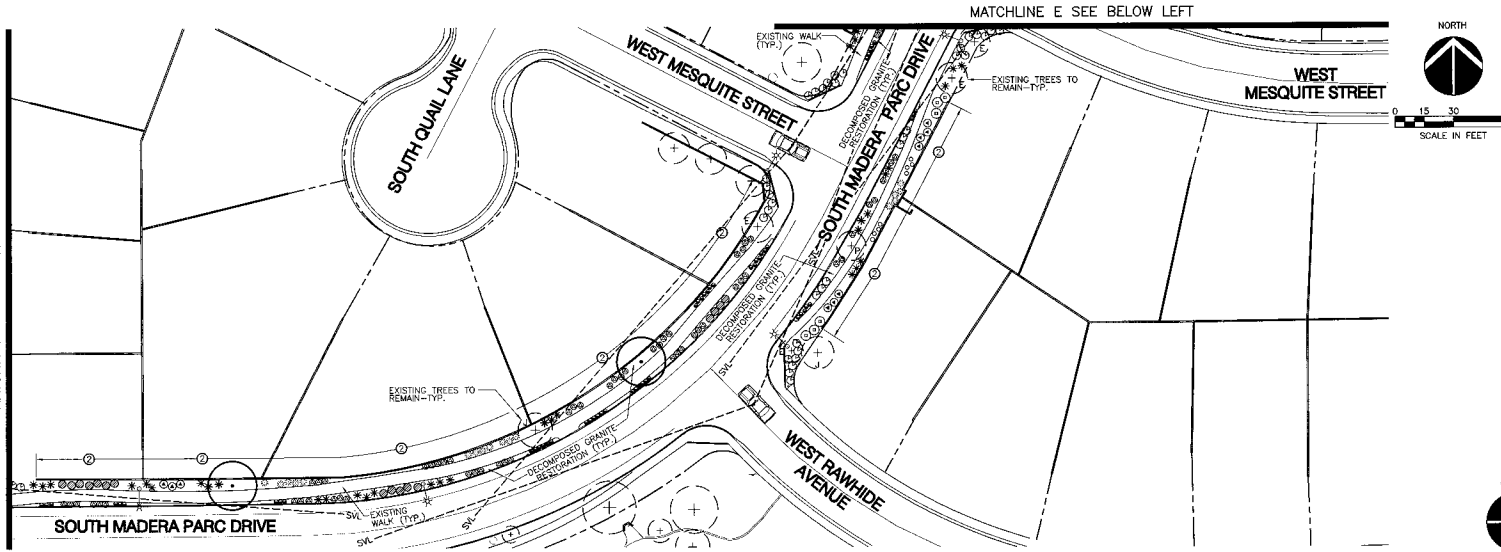
Landscape Plan  
 Parkway Improvement District 07-10  
**MADERA PARC**  
 PREPARED FOR: Town of Gilbert

DESIGNED BY: MPR  
 DRAWN BY: BCD  
 CHECKED BY: DCM  
 PROJECT NO: 06422  
 DATE: 1/2008

DRAWING NO.  
**L-3**  
 SHEET 3 OF 21

MATCHLINE D SEE DRAWING L-3

MATCHLINE E SEE ABOVE RIGHT



### GENERAL NOTES

1. ALL TREES WITHIN THE SIGHT VISIBILITY TRIANGLES TO BE TRIMMED UP AND MAINTAINED AT A 7' MIN. CANOPY HEIGHT, AND ALL GROUND COVER TO BE MAINTAINED AT A MAX. HEIGHT OF 24". NO SHRUBS ARE ALLOWED IN THE SIGHT VISIBILITY TRIANGLE.
2. MAINTAIN A 7' MIN. CLEARANCE FROM ALL FIRE HYDRANTS IN ALL DIRECTIONS TO NEW OR ANY LANDSCAPING.
3. ALL EXISTING SHRUB PLANTINGS TO BE REMOVED AND REPLACED AS SHOWN, UNLESS OTHERWISE INDICATED.
4. CALL BLUE STAKE (602-263-1100) TO LOCATE UNDERGROUND UTILITIES BEFORE STARTING ANY UNDERGROUND WORK.
5. NO PLANT SUBSTITUTIONS, TYPE OR QUANTITY DEVIATIONS FROM THE APPROVED LANDSCAPE PLAN(S) WITHOUT PRIOR APPROVAL FROM THE TOWN OF GILBERT.
6. ALL PLANT MATERIAL AND SPECIFICATIONS TO CONFORM TO THE ARIZONA NURSERYMAN ASSOCIATION STANDARDS.
7. CONTRACTOR SHALL REVIEW CONDITION OF ALL EXISTING "SCOURERS," REPAIR/REPLACE AS REQUIRED ALL BROKEN OR CRACKED CONCRETE AND MISSING "SEDED" RIVER RUN ROCK.
8. WHERE DECOMPOSED GRANITE OR TURF ADJUT A CONC. HEADER OR OTHER PAVEMENT EDGE, CONTRACTOR SHALL ADJUST GRADE AS REQUIRED TO PROVIDE A MINIMUM 1" BETWEEN TOP OF HEADER OR PAVEMENT EDGE AND TOP OF 2" DEPTH DECOMPOSED GRANITE OR TOP OF TURF.
9. SWL=TOWN OF GILBERT SIGHT VISIBILITY LINE
10. REPAIR EROSION DAMAGED AREAS WITH FILL DIRT AND RETURN TO ORIGINAL GRADE BEFORE DECOMPOSED GRANITE RESTORATION.
11. INSTALL NEW 2"x2" LOOSE ROCK RIP RAP 3"-6" LOCATED AT EACH DRAINAGE BLOCK IN WALLS AT COMMON SPACE AREAS.

### LANDSCAPE MATERIAL LEGEND

BOTANICAL NAME	COMMON NAME	SIZE
TREES		
▲	ACACIA SMALLI SWEET ACACIA	24" BOX
○	CHILLOPSIS LINEARIS DESERT WILLOW	24" BOX
◆	DALBERGIA SISSOO SISSOO	24" BOX
△	PARKINSONIA PIRAECCO PALM BREA	36" BOX
●	ULMUS PARVIFLORA EVERGREEN ELM	24" BOX
SHRUBS, GROUND COVERS, AND ACCENTS		
*	AGAVE DESMETIANA	5 GAL
▲	BOURNAVILLEA 'LA JOLLA'	3 GAL
⊕	CAESALPINA MEXICANA MEXICAN BIRD OF PARADISE	5 GAL
⊙	CALLIANDRA CALIFORNICA SAN FERRY DESERT	5 GAL
⊗	CASSIA PHYLODENDRA SILVER LEAF CASSIA	5 GAL
⊕	CHRYSANTHEMUM MEXICANA DAMAZITA	1 GAL
*	HESPERALOE PARVIFLORA RED 'YUCCA'	5 GAL
⊙	LANTANA 'NEW GOLD' NEW GOLD LANTANA	1 GAL
⊕	LEUCOPHYLLUM CANDIDUM 'THUNDER CLOUD'	5 GAL
⊙	LEUCOPHYLLUM LANGMANIAE 'RIO GRANDI SAGE'	5 GAL
⊕	MUHLENBERGIA CAPILLARIS PINK MAUI 'REGAL MIST'	5 GAL
⊕	MUHLENBERGIA RESENS DEER GRASS	5 GAL
⊕	NETELUM OLEANDER 'PETITE PINK' OLEANDER	5 GAL
⊕	ROSMARINUS OFFICINALIS HUNTINGTON GARRET DWARF ROSEMARY	1 GAL
*	RUELLIA BRITTONIANA 'KATE' KATE RUELLIA	1 GAL
⊕	RUELLIA PENINSULARIS RUFFLEA	5 GAL
⊕	SIMMONDSIA CHINENSIS SIMMONDSIA	5 GAL
⊕	TETRANEURIS ACALUIS ANGETLA DAI	1 GAL
⊕	TURF-SEED (MIMEX SAHARA) OVERSEEDED 'MIDROW' SOD IF PLANTED OUT OF SEASON CONC. HEADER	
ROCK GROUND COVER		
■	NEW LOOSE ROCK AS SHOWN ON PLAN. MUST SURROUNDING D.G. COLOR DECOMPOSED GRANITE. INSTALL 2" MIN. DEPTH 1/2" SCREENED SAND AND CONC. COVERED SO. 1/2" SCREENED TAMPAM CORAL. ALL OTHER LANDSCAPE PLANTING MEAS= 1/2" SCREENED MASON GOLD	

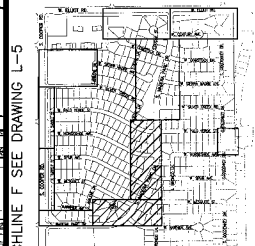
### EXISTING TREE LEGEND

- EXISTING TREE TO REMAIN
- ▲ ASH-TRIFOLIUM TREE 9" PIPE TREE
- ⊕ EXISTING WILLOW 2" JAGGARDAS-SISSOO TREE
- ◆ EXISTING PALM TREE TO REMAIN

### WALL LEGEND NOTES

1. EXISTING INTEGRAL COLOR BLOCK WALL MAINTAINED BY THE TOWN OF GILBERT
2. EXISTING STUCCO AND PAINTED WALL MAINTAINED BY THE TOWN OF GILBERT
3. EXISTING STUCCO AND PAINTED THEME WALL WITH BLEE ACCENT BAND MAINTAINED BY THE TOWN OF GILBERT. CONTRACTOR SHALL REPLACE ALL MISSING, CRACKED, CHIPPED, WORN, OR PAINTED TERRAZZO, COITIA IN THEME WALL. (FIELD VERIFY)
4. CONTRACTOR SHALL REPLACE ALL MISSING, CRACKED, OR SEPARATING CONCRETE IN THEME WALL TILE ACCENT BAND. (FIELD VERIFY)
5. EXISTING NEW FENCE MAINTAINED BY THE TOWN OF GILBERT (TYPICAL)

### KEYMAP



NO.	DATE	DESCRIPTION



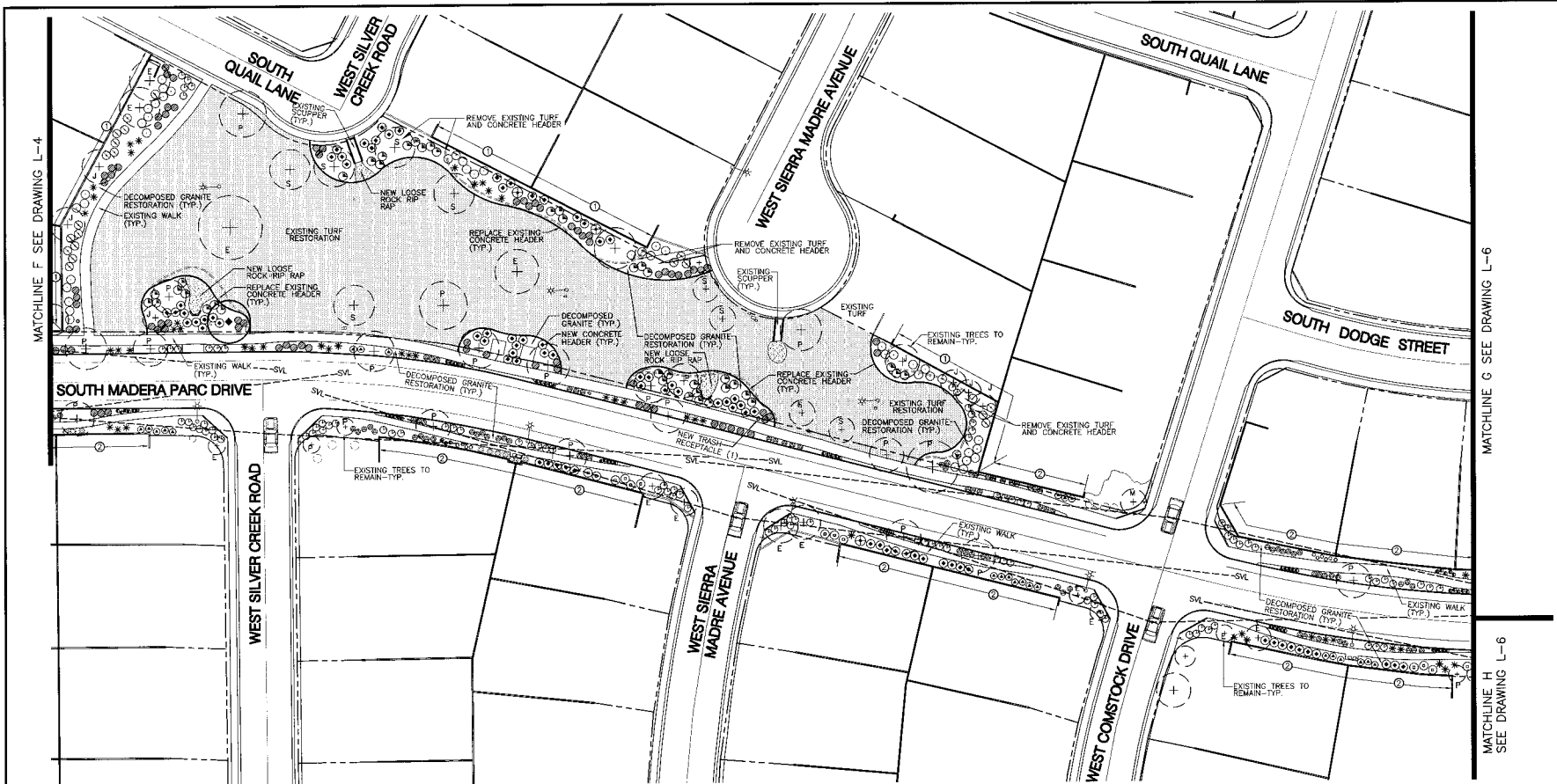
**McCloskey • Peltz, Inc.**  
 LANDSCAPE ARCHITECTS  
 1100 W. GILBERT AVENUE, SUITE 110  
 GILBERT, ARIZONA 85134  
 PHONE: 480.360.8000 FAX: 480.360.8174



Landscape Plan  
 Parkway Improvement District 07-10  
**MADERA PARC**  
 PREPARED FOR: Town of Gilbert

DESIGNED BY: MPI  
 DRAWN BY: BCD  
 CHECKED BY: DCM  
 PROJECT NO: 06422  
 DATE: 1/2008

DRAWING NO.  
**L-4**  
 SHEET 4 OF 21



MATCHLINE F SEE DRAWING L-4

MATCHLINE G SEE DRAWING L-6

MATCHLINE H SEE DRAWING L-6

**LANDSCAPE MATERIAL LEGEND**

SYMBOL	BOTANICAL NAME	COMMON NAME	SIZE
(A)	ACACIA SMALLII	SWEET ACACIA	24" BOX
(B)	CHILOPSIS LINEARIS	DESERT WILLOW	24" BOX
(C)	DALBERGIA SISSOD	SISSOD	24" BOX
(D)	PARKINSONIA PRAECOX	PALD BREA	36" BOX
(E)	ALMUS PARVIFOLIA	EVERGREEN ELM	24" BOX

SYMBOL	SHRUBS, GROUND COVERS, AND ACCENTS	SIZE
(*)	AGAVE DESMETTIANA	5 GAL.
(▲)	BOUQUINVILLE 'LA JOLLA'	5 GAL.
(□)	BOUQUINVILLE	5 GAL.
(⊕)	MEXICAN BIRD OF PARADISE	5 GAL.
(⊙)	CALLANDRA CALIFORNICA	5 GAL.
(⊖)	BAJA FAIRY DUSTER	5 GAL.
(⊗)	CASSIA PHYLLOENA	5 GAL.
(⊘)	SILVER LEAF CASSIA	5 GAL.
(⊙)	CHRYSACTINIA MEXICANA	1 GAL.
(⊚)	ZAMANTHA	1 GAL.
(⊛)	CONVOLVULUS CNEORUM	1 GAL.
(⊜)	BUSH MORNING GLORY	1 GAL.
(*)	HESPERALOE PARVIFLORA	5 GAL.
(⊙)	RED YUCCA	1 GAL.
(⊚)	LANTANA 'NEW GOLD'	1 GAL.
(⊛)	LEUCOPHYLLUM CARODIUM	5 GAL.
(⊜)	LEUCOPHYLLUM LANGMANIAE	5 GAL.
(⊙)	'TOD BRAY'S' SAGE	5 GAL.
(⊚)	MULLENBERGIA CAPILLARIS	5 GAL.
(⊛)	MULLENBERGIA RIGENS	5 GAL.
(⊜)	DEER GRASS	5 GAL.
(⊙)	NEROLIUM OLEANDER	5 GAL.
(⊚)	'PETITE PINK' OLEANDER	1 GAL.
(⊛)	ROSAMARINUS OFFICINENSIS	1 GAL.
(⊜)	'HUNTINGTON CARPET'	1 GAL.
(⊙)	DWARF ROSEMARY	1 GAL.
(⊚)	RUELLIA BRITTONIANA 'KATIE'	1 GAL.
(⊛)	KATIE RUELLIA	1 GAL.
(⊜)	RUELLIA PENINSULARIS	5 GAL.
(⊙)	DESERT RUELLIA	5 GAL.
(⊚)	SIMMONDSIA CHINENSIS	5 GAL.
(⊛)	JOUBAR	1 GAL.
(⊜)	TETRANEURIS ACAAULIS	1 GAL.
(⊙)	ANGELITA DAISY	1 GAL.

SYMBOL	ROCK, GROUND COVER	SIZE
(□)	NEW LOOSE ROCK	3"-6"
(■)	'RP' RAP LOCATED AS SHOWN ON PLAN, MATCH SURROUNDING D.G. COLOR	
(⊕)	DECOMPOSED GRANITE, INSTALL 2" MIN. DEPTH IN ALL LANDSCAPE PLANTING AREAS	
(⊖)	SIZE AND COLOR: COOPER RD-1/2" SCREENED 'YAWAPA CORAL'	
(⊗)	ALL OTHER LANDSCAPE PLANTING AREAS-1/2" SCREENED 'MADISON GOLD'	

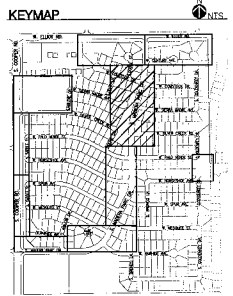
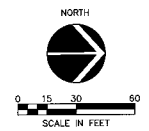
SYMBOL	EXISTING TREE LEGEND
(+)	EXISTING TREE TO REMAIN
(P)	NEW PINE TREE
(S)	NEW SILVER CHERRY TREE
(W)	NEW WILLOW TREE
(SS)	NEW SISSOD TREE
(R)	EXISTING SHRUB OR GROUND COVER TO REMAIN

SYMBOL	WALL LEGEND NOTES
(1)	EXISTING INTEGRAL COLOR BLOCK WALL MAINTAINED BY THE TOWN OF GILBERT
(2)	EXISTING STUCCO AND PAINTED WALL MAINTAINED BY THE TOWN OF GILBERT
(3)	EXISTING STUCCO AND PAINTED THEME WALL WITH TILE ACCENT BAND. CONTRACTOR SHALL REPLACE ALL MISSING, CRACKED, CHIPPED, SPALL, OR PAINTED TERRAZZO, CHIP-TILE, SPIN, OR PAINTED TERRAZZO WITH TILE ACCENT BAND. (FIELD VERIFY)
(4)	CONTRACTOR SHALL REPLACE ALL MISSING, CRACKED, OR SEPARATING TILE GROUT IN THEMATIC WALL TILE ACCENT BAND. (FIELD VERIFY)
(5)	EXISTING WOOD FENCE MAINTAINED BY THE TOWN OF GILBERT (TYPICAL)

**GENERAL NOTES**

- ALL TREES WITHIN THE SIGHT VISIBILITY TRIANGLES (SVT) TO BE TRIMMED UP AND MAINTAINED AT A 7' MIN. CANOPY HEIGHT, AND ALL GROUND COVER TO BE MAINTAINED AT A MAX. HEIGHT OF 24". NO SHRUBS ARE ALLOWED IN THE SIGHT VISIBILITY TRIANGLE.
- MAINTAIN A 7' MIN. CLEARANCE FROM ALL FIRE HYDRANTS IN ALL DIRECTIONS TO NEW OR ANY LANDSCAPING.
- ALL EXISTING SHRUB PLANTINGS TO BE REMOVED AND REPLACED AS SHOWN, UNLESS OTHERWISE INDICATED.
- CALL BLUE STAKE (602-263-1100) TO LOCATE UNDERGROUND UTILITIES BEFORE STARTING ANY UNDERGROUND WORK.
- NO PLANT SUBSTITUTIONS, TYPE OR QUANTITY DEVIATIONS FROM THE APPROVED LANDSCAPE PLAN(S) WITHOUT PRIOR APPROVAL FROM THE TOWN OF GILBERT.
- ALL PLANT MATERIAL AND SPECIFICATIONS TO CONFORM TO THE ARIZONA NURSERYMAN ASSOCIATION STANDARDS.
- WHERE DECOMPOSED GRANITE OR TURF ABUT A CONC. HEADER OR OTHER PAVEMENT EDGE, CONTRACTOR SHALL ADJUST GRADE AS REQUIRED TO PROVIDE A MINIMUM 1" BETWEEN TOP OF HEADER OR PAVEMENT EDGE AND TOP OF 2" DEPTH DECOMPOSED GRANITE OR TOP OF TURF. DO NOT REMOVE EXTRA MATERIAL FROM SITE. (SEE DETAILS) EXCAVATED MATERIAL TO BE UNIFORMLY SPREAD IN ADJACENT LANDSCAPE AREAS.
- SVL=TOWN OF GILBERT SIGHT VISIBILITY LINE.
- REPAIR EROSION DAMAGED AREAS WITH FILL DIRT AND RETURN TO ORIGINAL GRADE BEFORE DECOMPOSED GRANITE RESTORATION.
- LANDSCAPING ALONG COOPER ROAD TO BE COORDINATED WITH MASONRY WORK AND ENTRY MONUMENT RENOVATION BY OTHERS UNDER SEPARATE CONTRACT.



REVISIONS	NO.	DATE	DESCRIPTION



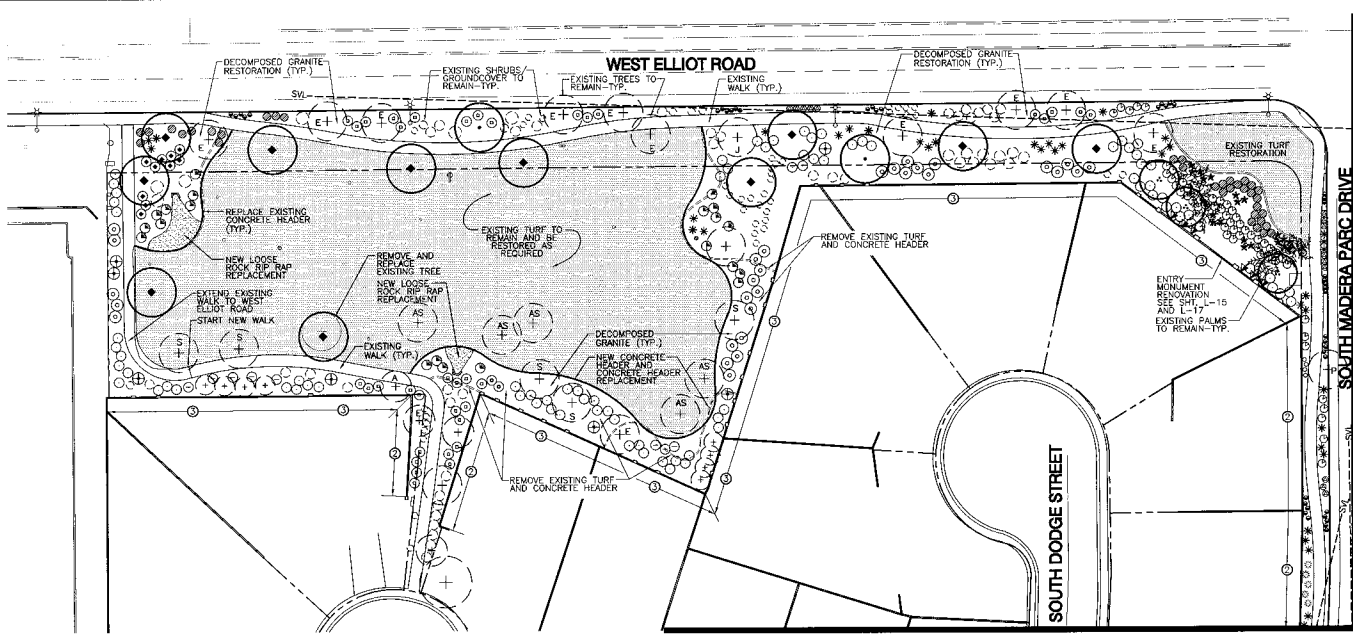
**McCloskey • Peitz, Inc.**  
 LANDSCAPE ARCHITECTS  
 1850 S. GILBERT AVENUE, SUITE 110  
 GILBERT, ARIZONA 85234  
 PHONE: (480) 263-8777 FAX: (480) 831-7774



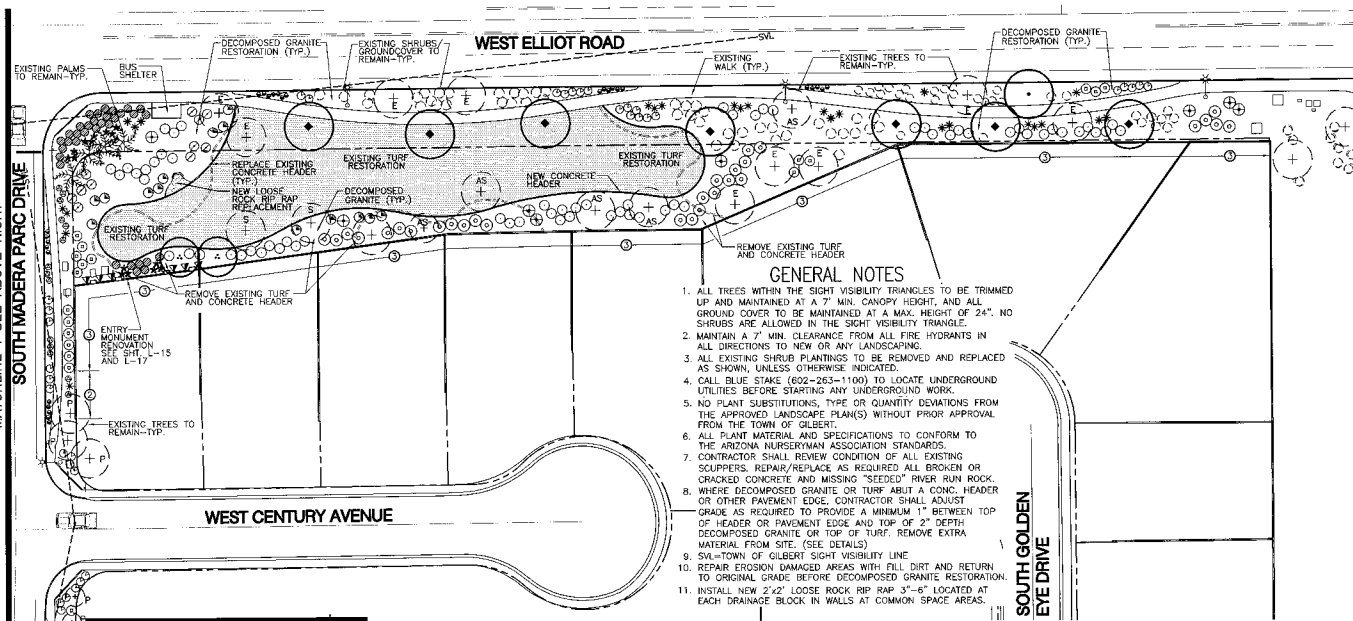
Landscape Plan  
 Parkway Improvement District 07-10  
**MADERA PARC**  
 PREPARED FOR: Town of Gilbert

DESIGNED BY: MPI  
 DRAWN BY: BCD  
 CHECKED BY: DCM  
 PROJECT NO: 08422  
 DATE: 1/2008

DRAWING NO.  
**L-5**  
 SHEET 5 OF 21



MATCHLINE G SEE DRAWING L-5

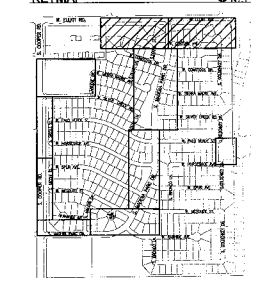


- GENERAL NOTES**
1. ALL TREES WITHIN THE SIGHT VISIBILITY TRIANGLES TO BE TRIMMED UP AND MAINTAINED AT A 7' MIN. CANOPY HEIGHT, AND ALL GROUND COVER TO BE MAINTAINED AT A MAX. HEIGHT OF 24". NO SHRUBS ARE ALLOWED IN THE SIGHT VISIBILITY TRIANGLE.
  2. MAINTAIN A 7' MIN. CLEARANCE FROM ALL FIRE HYDRANTS IN ALL DIRECTIONS TO NEW OR ANY LANDSCAPING.
  3. ALL EXISTING SHRUB PLANTINGS TO BE REMOVED AND REPLACED AS SHOWN, UNLESS OTHERWISE INDICATED.
  4. CALL BLUE STAKE (602-263-1100) TO LOCATE UNDERGROUND UTILITIES BEFORE STARTING ANY UNDERGROUND WORK.
  5. NO PLANT SUBSTITUTIONS, TYPE OR QUANTITY DEVIATIONS FROM THE APPROVED LANDSCAPE PLAN(S) WITHOUT PRIOR APPROVAL FROM THE TOWN OF GILBERT.
  6. ALL PLANT MATERIAL AND SPECIFICATIONS TO CONFORM TO THE ARIZONA NURSERYMAN ASSOCIATION STANDARDS.
  7. CONTRACTOR SHALL REVIEW CONDITION OF ALL EXISTING CURBS, REPAIR/REPLACE AS REQUIRED ALL BROKEN OR CRACKED CONCRETE AND MISSING "SEEDED" RIVER RUN ROCK.
  8. WHERE DECOMPOSED GRANITE OR TURF ABUT A CONC. HEADER OR OTHER PAVEMENT EDGE, CONTRACTOR SHALL ADJUST GRADE AS REQUIRED TO PROVIDE A MINIMUM 1" BETWEEN TOP OF HEADER OR PAVEMENT EDGE AND TOP OF 2" DEPTH DECOMPOSED GRANITE OR TOP OF TURF. REMOVE EXTRA MATERIAL FROM SITE. (SEE DETAILS)
  9. SVL=TOWN OF GILBERT SIGHT VISIBILITY LINE
  10. REPAIR EROSION DAMAGED AREAS WITH FILL DIRT AND RETURN TO ORIGINAL GRADE BEFORE DECOMPOSED GRANITE RESTORATION.
  11. INSTALL NEW 1/2" LOOSE ROCK RIP RAP 3'-6" LOCATED AT EACH DRAINAGE BLOCK IN WALLS AT COMMON SPACE AREAS.

**LANDSCAPE MATERIAL LEGEND**

BOTANICAL NAME	COMMON NAME	SIZE
●	TREES	
○	ACACIA SMALLII	24" BOX
○	SWEET ACACIA	
○	CHILLOPSIS LINEARIS	24" BOX
○	DESERT WILLOW	
○	DALBERGIA SISSOO	24" BOX
○	SISSOO	
○	PARAVINSONIA PRAEOCX	36" BOX
○	ULMUS PARVIFOLIA	24" BOX
○	EVERGREEN ELM	
*	SHRUBS, GROUND COVERS, AND ACCENTS	
○	AGAVE DESMETIANA	5 GAL.
○	AGAVE	
○	BOUGAINVILLEA 'LA JOLLA'	5 GAL.
○	BOUGAINVILLEA	
○	CAESALPINIA MEXICANA	5 GAL.
○	MEXICAN BIRD OF PARADISE	
○	CALLIANDRA CALIFORNICA	5 GAL.
○	BALL FERRY DUSTER	
○	CASSIA PHYLLOPODIA	5 GAL.
○	SILVER LEAF CASSIA	
○	CHEIRANTHINA MEXICANA	1 GAL.
○	DAMIANITA	
○	HESPERALOE PARVIFLORA	5 GAL.
○	RED YUCCA	
○	LANTANA 'NEW GOLD'	1 GAL.
○	NEW GOLD LANTANA	
○	LEUCOPHYLLUM GAMBODIUM	5 GAL.
○	'THUNDER CLOUD'	
○	LEUCOPHYLLUM LANGMANIAE	5 GAL.
○	'RIO BRAVO' SAGE	
○	MUHLENBERGIA CAPILLARIS	5 GAL.
○	PINK MAHLY 'REGAL MIST'	
○	MUHLENBERGIA RIGENS	5 GAL.
○	DEER GRASS	
○	NERIUM OLEANDER	5 GAL.
○	'PETITE PINK' OLEANDER	
○	ROSMARINUS OFFICINALIS	1 GAL.
○	'HUNTINGTON CARPET'	
○	DWARF ROSEMARY	
○	RUELLIA BRITTONIANA 'KATIE'	1 GAL.
○	'KATIE RUELLIA'	
○	RUELLIA PENINSULARIS	5 GAL.
○	'GESSERT RUELLIA'	
○	SIMMONDSIA CHINENSIS	5 GAL.
○	JOUBA	
○	TETRANEURIS ACALUIS	1 GAL.
○	ANGELITA DAISY	
○	'TURF-SEED (DUNEK SAHARA)	
○	OVERSEEDED 'MIDIRON' SOG IF PLANTED OUT OF SEASON	
○	CONC. HEADER	
○	ROCK GROUND COVER	
○	NEW RIP-RAP LOCATED AS SHOWN ON THE PLAN MATCH SURROUNDINGS D.G. COLOR DECOMPOSED GRANITE. INSTALL UNLESS OTHERWISE INDICATED.	
○	MIN. DEPTH IN ALL UNPAVED PLANTING AREAS.	
○	SIZE AND COLOR: COOPER RD. 1/2" SCREENED 'NAVAJO' COGAL. ALL OTHER LANDSCAPE PLANTING AREAS= 1/2" SCREENED MADISON GOLD	

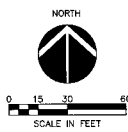
- EXISTING TREE LEGEND**
- EXISTING TREE TO REMAIN
  - EXISTING TREE TO REMAIN AS-AFRICAN LIMEAC FUCHSIA/SPYRUS
  - EXISTING TREE TO REMAIN AS-DESERT WILLOW
  - EXISTING TREE TO REMAIN AS-SISSOO TREE
  - EXISTING PALM TREE TO REMAIN
  - EXISTING SHRUB OR GROUND COVER TO REMAIN
- WALL LEGEND NOTES**
1. EXISTING INTEGRAL COLOR BLOCK WALL MAINTAINED BY THE TOWN OF GILBERT
  2. EXISTING STUCCO AND PAINTED WALL MAINTAINED BY THE TOWN OF GILBERT
  3. EXISTING STUCCO AND PAINTED THEME WALL WITH TILE ACCENT BAND MAINTAINED BY THE TOWN OF GILBERT
  4. CONTRACTOR SHALL REPLACE ALL MISSING CORNICES, CHIPPED WORK, OR PAINTED TERRA COTTA TILE IN THEME WALL TILE ACCENT BAND. (FIELD VERIFY)
  5. CONTRACTOR SHALL REPLACE ALL MISSING CORNICES OR SEPARATING TILE CHIPPED IN THEME WALL TILE ACCENT BAND. (FIELD VERIFY)
  6. EXISTING VIEW FENCE MAINTAINED BY THE TOWN OF GILBERT (TYPICAL)



SOUTH MADERA PARC DRIVE  
MATCHLINE I SEE BELOW LEFT

MATCHLINE I SEE ABOVE RIGHT  
SOUTH MADERA PARC DRIVE

MATCHLINE H SEE DRAWING L-5



REVISIONS	NO.	DATE	DESCRIPTION



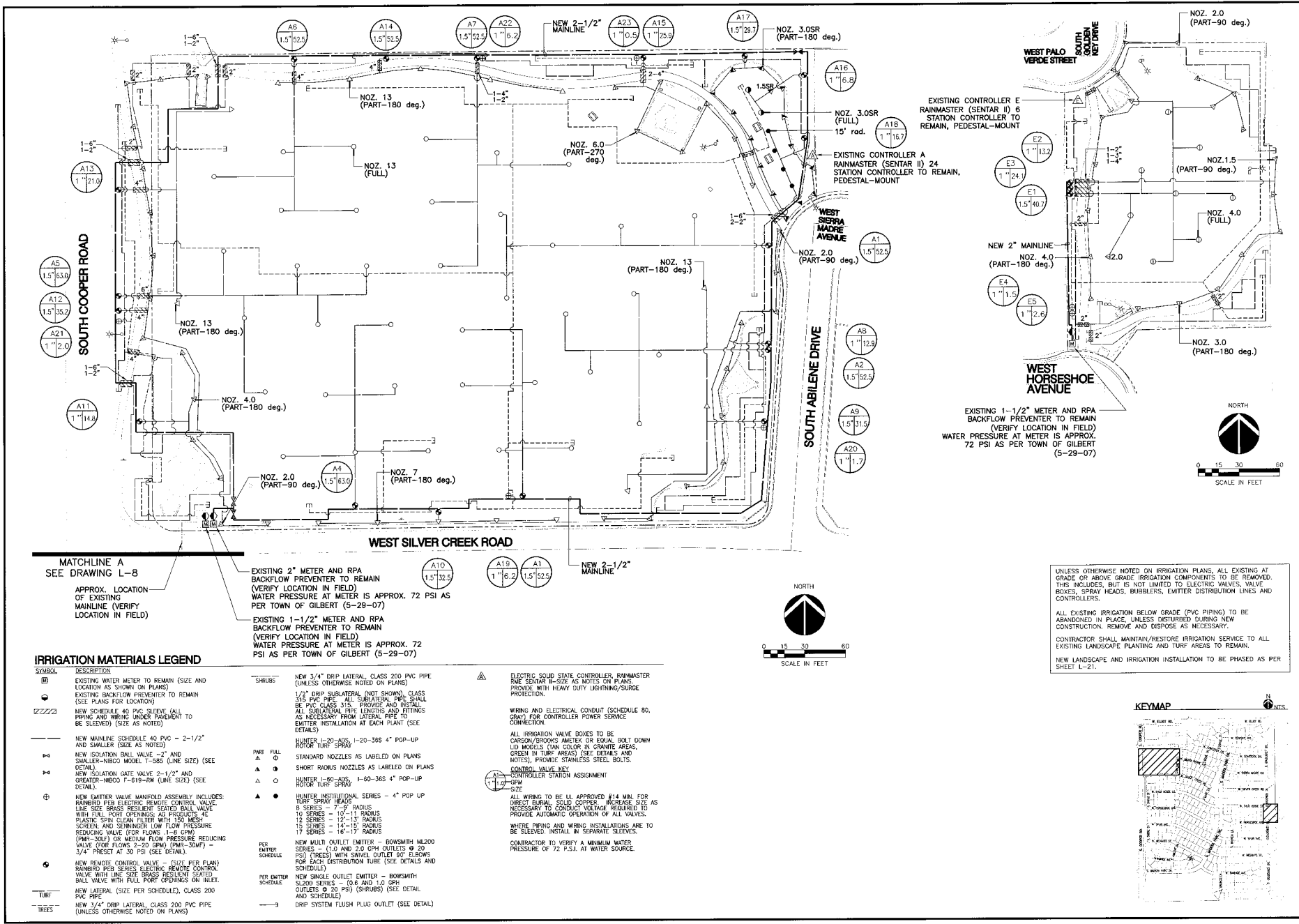
**McCloskey + Peltz, Inc.**  
LANDSCAPE ARCHITECTS  
One West McDowell Blvd. Suite 110  
Tempe, AZ 85283-1077  
Phone: (480) 966-0777



Landscape Plan  
Parkway Improvement District 07-10  
**MADERA PARC**  
PREPARED FOR: Town of Gilbert

DESIGNED BY: MPI  
DRAWN BY: BCD  
CHECKED BY: DCM  
PROJECT NO: 06422  
DATE: 1/2008

DRAWING NO:  
**L-6**  
SHEET 6 OF 21



**MATCHLINE A**  
SEE DRAWING L-8

APPROX. LOCATION OF EXISTING MAINLINE (VERIFY LOCATION IN FIELD)

EXISTING 2" METER AND RPA BACKFLOW PREVENTER TO REMAIN (VERIFY LOCATION IN FIELD) WATER PRESSURE AT METER IS APPROX. 72 PSI AS PER TOWN OF GILBERT (5-29-07)

EXISTING 1-1/2" METER AND RPA BACKFLOW PREVENTER TO REMAIN (VERIFY LOCATION IN FIELD) WATER PRESSURE AT METER IS APPROX. 72 PSI AS PER TOWN OF GILBERT (5-29-07)

**IRRIGATION MATERIALS LEGEND**

SYMBOL	DESCRIPTION
(M)	EXISTING WATER METER TO REMAIN (SIZE AND LOCATION AS SHOWN ON PLANS)
(B)	EXISTING BACKFLOW PREVENTER TO REMAIN (SEE PLANS FOR LOCATION)
(S)	NEW SCHEDULE 40 PVC SLEEVE (ALL PIPING AND WIRING UNDER PARKING TO BE SLEEVED) (SIZE AS NOTED)
(M)	NEW MAINLINE SCHEDULE 40 PVC - 2-1/2" AND SMALLER (SIZE AS NOTED)
(I)	NEW ISOLATION BALL VALVE - 2" AND SMALLER - INBOC MODEL T-385 (LINE SIZE) (SEE DETAIL)
(G)	NEW ISOLATION GATE VALVE 2-1/2" AND GREATER - INBOC F-619-RW (LINE SIZE) (SEE DETAIL)
(E)	NEW EMITTER VALVE MANIFOLD ASSEMBLY INCLUDES: RAMBRO PER SERIES ELECTRIC REMOTE CONTROL VALVE WITH LINE SIZE BRASS RESISTIVE SEATED BALL VALVE WITH FULL PORT OPENINGS; AG PRODUCTS 4E PLASTIC SPRAY CLEAN FILTER WITH 150 MESH SCREEN AND SEMI-MINOR LOW FLOW PRESSURE REDUCING VALVE (FOR FLOWS 2-20 GPM) (PWR-SOMF) - 3/4" PRESST AT 30 PSI (SEE DETAIL)
(R)	NEW REMOTE CONTROL VALVE - (SIZE PER PLAN) RAMBRO PER SERIES ELECTRIC REMOTE CONTROL VALVE WITH LINE SIZE BRASS RESISTIVE SEATED BALL VALVE WITH FULL PORT OPENINGS ON INLET.
(L)	NEW LATERAL (SIZE PER SCHEDULE), CLASS 200 PVC PIPE
(T)	NEW 3/4" DRIP LATERAL, CLASS 200 PVC PIPE (UNLESS OTHERWISE NOTED ON PLANS)
(S)	SHRUBS
(P)	PERI PERI
(F)	PERI PERI SCHEDULE
(T)	TURF
(T)	TREES

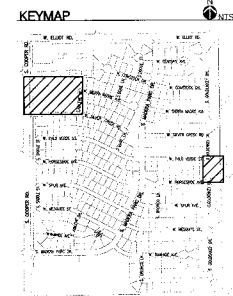
(A)	ELECTRIC SOLID STATE CONTROLLER, RAINMASTER RME SENSAR 1-SIZE AS NOTED ON PLANS. PROVIDE WITH HEAVY DUTY LIGHTNING/SURGE PROTECTION.
(S)	1/2" DRIP SUBLATERAL (NOT SHOWN), CLASS 315 PVC PIPE - ALL SUBLATERAL PIPE SHALL BE PVC CLASS 315. PROVIDE AND INSTALL ALL SUBLATERAL PIPE LENGTHS AND FITTINGS AS NECESSARY FROM LATERAL PIPE TO EMITTER INSTALLATION AT EACH PLANT (SEE DETAILS)
(H)	HUNTER I-20-ADS, I-20-365 4" POP-UP ROTOR TURF SPRAY
(N)	STANDARD NOZZLES AS LABELED ON PLANS
(S)	SHORT RADIUS NOZZLES AS LABELED ON PLANS
(H)	HUNTER I-60-ADS, I-60-365 4" POP-UP ROTOR TURF SPRAY
(H)	HUNTER INSTITUTIONAL SERIES - 4" POP UP TURF SPRAY HEADS
(S)	8 SERIES - 7-9" RADIUS
(S)	10 SERIES - 10-11" RADIUS
(S)	12 SERIES - 12-13" RADIUS
(S)	15 SERIES - 14-15" RADIUS
(S)	17 SERIES - 16-17" RADIUS
(E)	ALL WIRING TO BE UL APPROVED #14 MIN. FOR DIRECT BURIAL, SOLID COPPER. INCREASE SIZE AS NECESSARY TO CONDUCT VOLTAGE REQUIRED TO PROVIDE AUTOMATIC OPERATION OF ALL VALVES.
(E)	WHERE PIPING AND WIRING INSTALLATIONS ARE TO BE SLEEVED INSTALL IN SEPARATE SLEEVES.
(C)	CONTRACTOR TO VERIFY A MINIMUM WATER PRESSURE OF 72 P.S.I. AT WATER SOURCE.
(E)	CONTROL VALVE KEY
(C)	CONTROLLER STATION ASSIGNMENT
(S)	SIZE
(E)	ALL WIRING TO BE UL APPROVED #14 MIN. FOR DIRECT BURIAL, SOLID COPPER. INCREASE SIZE AS NECESSARY TO CONDUCT VOLTAGE REQUIRED TO PROVIDE AUTOMATIC OPERATION OF ALL VALVES.
(E)	WHERE PIPING AND WIRING INSTALLATIONS ARE TO BE SLEEVED INSTALL IN SEPARATE SLEEVES.
(C)	CONTRACTOR TO VERIFY A MINIMUM WATER PRESSURE OF 72 P.S.I. AT WATER SOURCE.
(E)	NEW SINGLE OUTLET EMITTER - BOWSMITH M200 SERIES - (1.0 AND 2.0 GPH OUTLETS @ 20 PSI) (PRESS) WITH SWIVEL OUTLET 60° ELBOWS FOR EACH DISTRIBUTION TUBE (SEE DETAILS AND SCHEDULE)
(E)	NEW SINGLE OUTLET EMITTER - BOWSMITH M200 SERIES - (0.6 AND 1.0 GPH OUTLETS @ 20 PSI) (SHRUBS) (SEE DETAIL AND SCHEDULE)
(F)	DRIP SYSTEM FLUSH PLUG OUTLET (SEE DETAIL)

UNLESS OTHERWISE NOTED ON IRRIGATION PLANS, ALL EXISTING AT GRADE OR ABOVE GRADE IRRIGATION COMPONENTS TO BE REMOVED. THIS INCLUDES, BUT IS NOT LIMITED TO, ELECTRIC VALVES, VALVE BOXES, SPRAY HEADS, BUBBLERS, EMITTER DISTRIBUTION LINES AND CONTROLLERS.

ALL EXISTING IRRIGATION BELOW GRADE (PVC PIPING) TO BE ABANDONED IN PLACE, UNLESS DISTURBED DURING NEW CONSTRUCTION. REMOVE AND DISPOSE AS NECESSARY.

CONTRACTOR SHALL MAINTAIN/RESTORE IRRIGATION SERVICE TO ALL EXISTING LANDSCAPE PLANTING AND TURF AREAS TO REMAIN.

NEW LANDSCAPE AND IRRIGATION INSTALLATION TO BE PHASED AS PER SHEET L-21.



NO.	DATE	DESCRIPTION



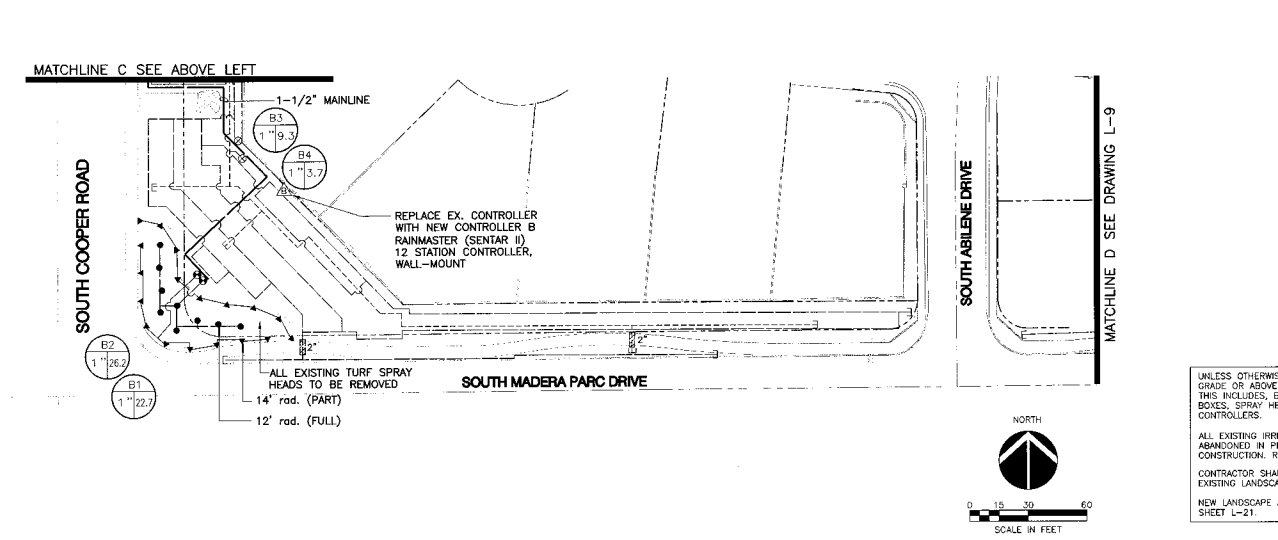
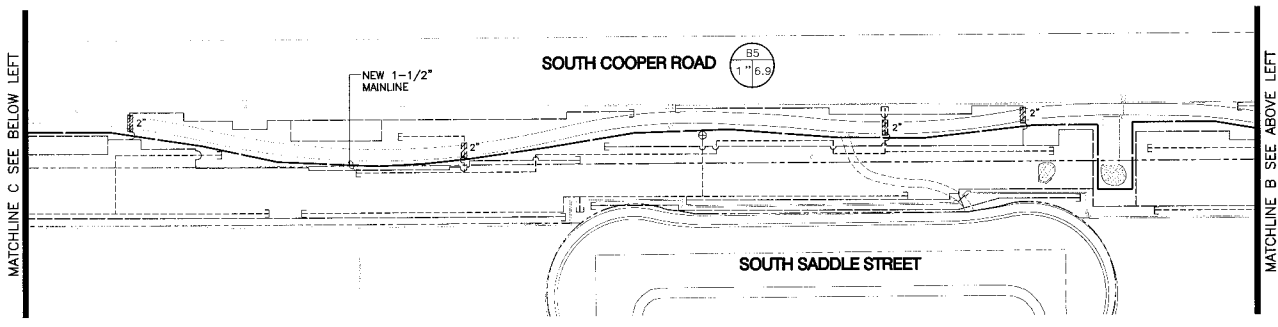
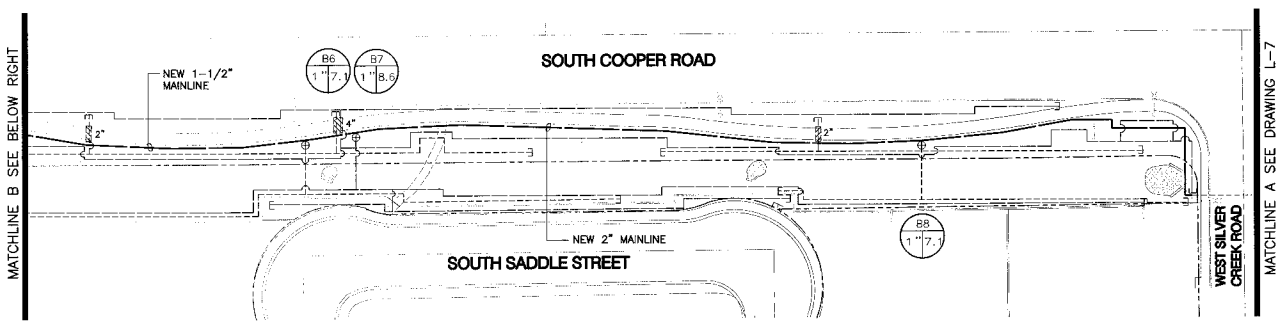
**McCloskey + Peltz, Inc.**  
LANDSCAPE ARCHITECTS  
One West Elliot Street Suite 110  
Tempe, Arizona 85284  
Phone: (480) 838-8777  
Fax: (480) 838-9774



Irrigation Plan  
Parkway Improvement District 07-10  
**MADERA PARC**  
PREPARED FOR: Town of Gilbert

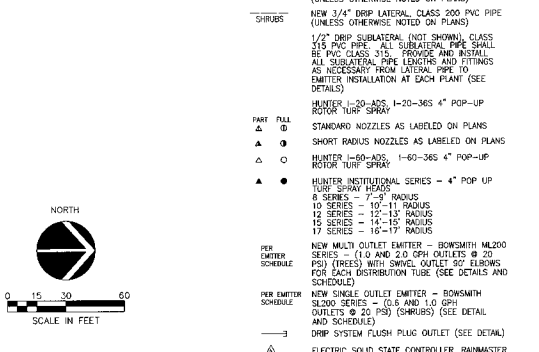
DESIGNED BY: MPI  
DRAWN BY: BCD  
CHECKED BY: DCM  
PROJECT NO: 06422  
DATE: 1/2008

DRAWING NO.  
**L-7**  
SHEET 7 OF 21



**IRRIGATION MATERIALS LEGEND**

SYMBOL	DESCRIPTION
(M)	EXISTING WATER METER TO REMAIN (SIZE AND LOCATION AS SHOWN ON PLANS)
(B)	EXISTING BACKFLOW PREVENTER TO REMAIN (SEE PLANS FOR LOCATION)
	NEW SCHEDULE 40 PVC SLEEVE (ALL PIPING AND WIRING UNDER PAVEMENT TO BE SCHEDULED) (SIZE AS NOTED)
---	NEW MAINLINE SCHEDULE 40 PVC - 2-1/2" AND SMALLER (SIZE AS NOTED)
---	NEW ISOLATION BALL VALVE - 2" AND SMALLER - NIBCO MODEL T-585 (LINE SIZE) (SEE DETAIL)
---	NEW ISOLATION GATE VALVE 2-1/2" AND GREATER - NIBCO P-619-RW (LINE SIZE) (SEE DETAIL)
(M)	NEW EMITTER VALVE MANIFOLD ASSEMBLY INCLUDES: RAINBIRD PER SERIES ELECTRIC REMOTE CONTROL VALVE, LINE SIZE BRASS RESILIENT SEATED BALL VALVE WITH FULL PORT OPENING, 1/2" BRASS PLASTIC SPIN CLEAN FILTER WITH 150 MESH SCREEN, AND SEMI-LOW FLOW PRESSURE REDUCING VALVE (FOR FLOWS, 1-8 GPM) (FWR-30E) OR MEDIUM FLOW PRESSURE REDUCING VALVE (FOR FLOWS, 2-20 GPM) (FWR-30M) - 3/4" PRESET AT 30 PSI (SEE DETAIL)
(S)	NEW REMOTE CONTROL VALVE - (SIZE PER PLAN) RAINBIRD PER SERIES ELECTRIC REMOTE CONTROL VALVE WITH LINE SIZE BRASS RESILIENT SEATED BALL VALVE WITH FULL PORT OPENING ON INLET
TURF	NEW LATERAL (SIZE PER SCHEDULE), CLASS 200 PVC PIPE
TREES	NEW 1/4" DRIP LATERAL, CLASS 200 PVC PIPE (UNLESS OTHERWISE NOTED ON PLANS)
SHRUBS	NEW 3/4" DRIP LATERAL, CLASS 200 PVC PIPE (UNLESS OTHERWISE NOTED ON PLANS)
1/2" DRIP	1/2" DRIP SUBLATERAL (NOT SHOWN), CLASS 315 PVC PIPE. ALL SUBLATERAL PIPE SHALL BE PVC CLASS 315, FRIGID, AND INSTALLED. ALL SUBLATERAL PIPE LENGTHS AND FITTINGS AS NECESSARY FROM LATERAL PIPE. EMITTER INSTALLATION AT EACH PLANT (SEE DETAILS)
HUNTER	HUNTER L-20-ADZ, L-20-365 4" POP-UP ROTOR TURF SPRAY
STANDARD	STANDARD NOZZLES AS LABELED ON PLANS
SHORT RADIUS	SHORT RADIUS NOZZLES AS LABELED ON PLANS
HUNTER	HUNTER L-60-ADZ, L-60-365 4" POP-UP ROTOR TURF SPRAY
HUNTER	HUNTER INSTITUTIONAL SERIES - 4" POP UP TURF SPRAY HEADS
8 SERIES	8 SERIES - 7'-0" RADIUS
10 SERIES	10 SERIES - 10'-11" RADIUS
12 SERIES	12 SERIES - 12'-13" RADIUS
15 SERIES	15 SERIES - 14'-15" RADIUS
17 SERIES	17 SERIES - 16'-7" RADIUS
NEW MULTI	NEW MULTI OUTLET EMITTER - BOWSMITH ML200 SERIES - (1.0 AND 2.0 GPH OUTLETS @ 20 PSI) (TREES) WITH SWIVEL OUTLET 90° ELBOWS FOR EACH DISTRIBUTION TUBE (SEE DETAILS AND SCHEDULE)
NEW SINGLE	NEW SINGLE OUTLET EMITTER - BOWSMITH SL200 SERIES - (0.5 AND 1.0 GPH OUTLETS @ 20 PSI) (SHRUBS) (SEE DETAIL AND SCHEDULE)
DRIP SYSTEM	DRIP SYSTEM FLUSH PLUG OUTLET (SEE DETAIL)
ELECTRIC	ELECTRIC SOLID STATE CONTROLLER, RAINMASTER RMC SENAR - (SIZE AS NOTED ON PLANS) PROVIDE WITH HEAVY DUTY LIGHTNING/SURGE PROTECTION.
WIRING	WIRING AND ELECTRICAL CONDUIT (SCHEDULE 80, GRAY) FOR CONTROLLER, POWER SERVICE CONNECTION.
IRRIGATION	ALL IRRIGATION VALVE BOXES TO BE CASTED/BRONZE ANTIKOR OR EQUAL BOLT DOWN LID BOXES (CAN COLOR IN GRANITE AREAS, GREEN IN TURF AREAS) (SEE DETAILS AND NOTES). PROVIDE STAINLESS STEEL BOLTS.
CONTROL	CONTROL VALVE KEY CONTROLLER STATION ASSIGNMENT
ALL WIRING	ALL WIRING TO BE UL APPROVED #14 AWG FOR DIRECT BURIAL SOLID COPPER. INCREASE SIZE NECESSARY TO CONDUIT VOLTAGE REQUIRED TO PROVIDE AUTOMATIC OPERATION OF ALL VALVES.
WHERE	WHERE PIPING AND WIRING INSTALLATIONS ARE TO BE SLEEVED, INSTALL IN SEPARATE SLEEVES.
CONTRACTOR	CONTRACTOR TO VERIFY MAINWATER PRESSURE OF 72 PSI AT WATER SOURCE.



UNLESS OTHERWISE NOTED ON IRRIGATION PLANS, ALL EXISTING AT GRADE OR ABOVE GRADE IRRIGATION COMPONENTS TO BE REMOVED. THIS INCLUDES, BUT IS NOT LIMITED TO ELECTRIC VALVES, VALVE BOXES, SPRAY HEADS, BUBBLERS, EMITTER DISTRIBUTION LINES AND CONTROLLERS.

ALL EXISTING IRRIGATION BELOW GRADE (PVC PIPING) TO BE ABANDONED IN PLACE, UNLESS DISTURBED DURING NEW CONSTRUCTION. REMOVE AND DISPOSE AS NECESSARY.

CONTRACTOR SHALL MAINTAIN/RESTORE IRRIGATION SERVICE TO ALL EXISTING LANDSCAPE PLANTING AND TURF AREAS TO REMAIN.

NEW LANDSCAPE AND IRRIGATION INSTALLATION TO BE PHASED AS PER SHEET L-21.

REVISIONS	DATE	DESCRIPTION

**McCloskey + Peltz, Inc.**  
 LANDSCAPE ARCHITECTS  
 1100 W. WASHINGTON  
 TROY, ARIZONA 85074  
 PHONE: (480) 806-8777

**GILBERT**  
 A R T I S T S

Irrigation Plan  
 Parkway Improvement District 07-10  
**MADERA PARC**  
 PREPARED FOR: Town of Gilbert

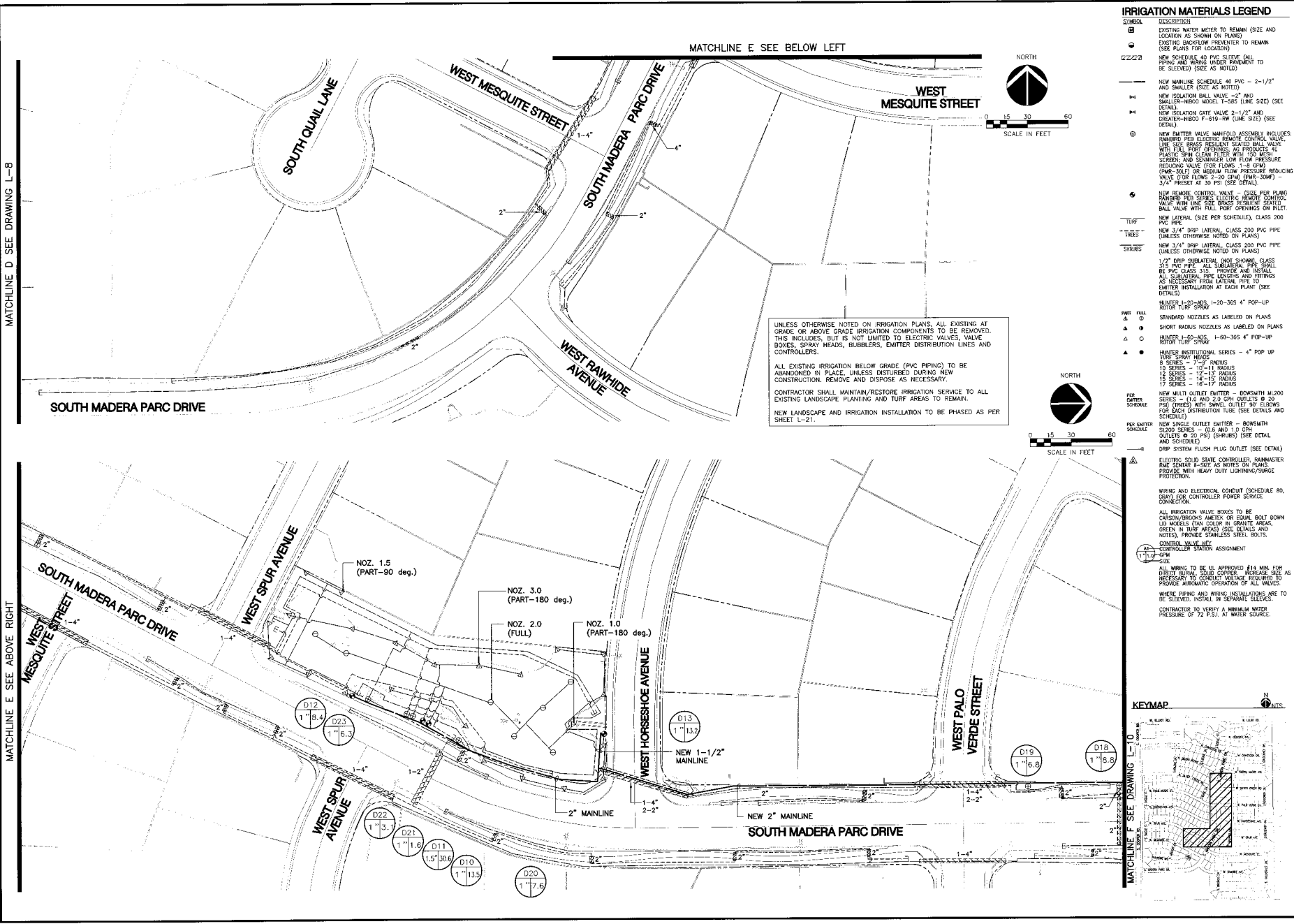
DESIGNED BY: MP1
DRAWN BY: BCD
CHECKED BY: DCM
PROJECT NO: 06422
DATE: 1/2008

DRAWING NO: <b>L-8</b>
SHEET 8 OF 21

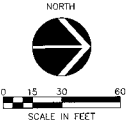
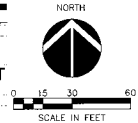


MATCHLINE D SEE DRAWING L-8

MATCHLINE E SEE ABOVE RIGHT



MATCHLINE E SEE BELOW LEFT



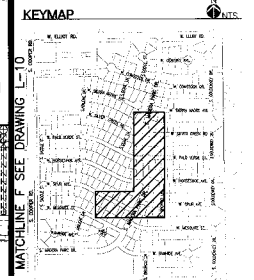
UNLESS OTHERWISE NOTED ON IRRIGATION PLANS, ALL EXISTING AT GRADE OR ABOVE GRADE IRRIGATION COMPONENTS TO BE REMOVED. THIS INCLUDES, BUT IS NOT LIMITED TO, ELECTRIC VALVES, VALVE BOXES, SPRAY HEADS, BUBBLERS, EMITTER DISTRIBUTION LINES AND CONTROLLERS.

ALL EXISTING IRRIGATION BELOW GRADE (PVC PIPING) TO BE ABANDONED IN PLACE, UNLESS DISTURBED DURING NEW CONSTRUCTION, REMOVE AND DISPOSE AS NECESSARY.

CONTRACTOR SHALL MAINTAIN/RESTORE IRRIGATION SERVICE TO ALL EXISTING LANDSCAPE PLANTING AND TURF AREAS TO REMAIN.

NEW LANDSCAPE AND IRRIGATION INSTALLATION TO BE PHASED AS PER SHEET L-21.

- IRRIGATION MATERIALS LEGEND**
- SYMBOL DESCRIPTION
- EXISTING WATER METER TO REMAIN (SIZE AND LOCATION AS SHOWN ON PLANS)
  - EXISTING BACKFLOW PREVENTER TO REMAIN (SEE PLANS FOR LOCATION)
  - NEW SCHEDULE 40 PVC SLEEVE (ALL PIPING AND WIRING UNDER PAVEMENT TO BE SLEEVED) (SIZE AS NOTED)
  - NEW MAINLINE SCHEDULE 40 PVC - 2-1/2" AND SMALLER (SIZE AS NOTED)
  - NEW ISOLATION BALL VALVE - 2" AND SMALLER - HIBCO MODEL 11-S (LINE SIZE) (SEE DETAIL)
  - NEW ISOLATION GATE VALVE 2-1/2" AND GREATER - HIBCO F-619-RW (LINE SIZE) (SEE DETAIL)
  - NEW EMITTER VALVE MANIFOLD ASSEMBLY INCLUDES: RAINBOW PER ELECTRIC REMOTE CONTROL VALVE, LINE SIZE BRASS RESILIENT SEALED BALL VALVE WITH FULL PORT OPENINGS AND CONDUIT, PLASTIC SPIN CLEAN FILTER WITH 150 MESH SCREEN, AND SCRAMBLER FOR FLOW PRESSURE REDUCING VALVE (FOR FLOWS 1-8 GPM (IMP-SD) OR MAXIMUM FLOW PRESSURE REDUCING VALVE (FOR FLOWS 9-20 GPM (IMP-30MP) - 3/4" PRESS AT 30 PSI) (SEE DETAIL)
  - NEW REMOTE CONTROL VALVE - (SIZE PER PLAN) RAINBOW PER SERIES ELECTRIC REMOTE CONTROL VALVE WITH LINE SIZE BRASS RESILIENT SEALED BALL VALVE WITH FULL PORT OPENINGS ON INLET.
  - NEW LATERAL (SIZE PER SCHEDULE), CLASS 200 PVC PIPE
  - NEW 3/4" DRIP LATERAL CLASS 200 PVC PIPE (UNLESS OTHERWISE NOTED ON PLANS)
  - NEW 3/4" DRIP LATERAL CLASS 200 PVC PIPE (UNLESS OTHERWISE NOTED ON PLANS)
  - 1/2" DRIP SUBLATERAL (NOT SHOWN), CLASS 315 PVC PIPE - ALL SUBLATERAL PIPE SHALL BE PVC CLASS 315 - PROVIDE AND INSTALL ALL SUBLATERAL PIPE LENGTHS AND FITTINGS AS NECESSARY FROM LATERAL PIPE TO EMITTER INSTALLATION AT EACH PLANT (SEE DETAILS)
  - HUNTER I-20-ADS, I-20-3ES 4" POP-UP ROTOR TURF SPRAY
  - STANDARD NOZZLES AS LABELED ON PLANS
  - SHORT RADIUS NOZZLES AS LABELED ON PLANS
  - HUNTER I-60-ADS, I-60-3ES 4" POP-UP ROTOR TURF SPRAY
  - HUNTER IRRIGATION SERIES - 4" POP UP 8 SERIES - 12" RADIUS
  - 10 SERIES - 10" RADIUS
  - 15 SERIES - 12" RADIUS
  - 18 SERIES - 14" RADIUS
  - 17 SERIES - 16" RADIUS
  - NEW MULTI OUTLET EMITTER - BOWSWITH M2000 SERIES - (10 AND 20 GPM OUTLETS @ 20 PSI) (SEE DETAIL AND SCHEDULE)
  - NEW SINGLE OUTLET EMITTER - BOWSWITH M2000 SERIES - (10 AND 20 GPM OUTLETS @ 20 PSI) (SEE DETAIL AND SCHEDULE)
  - DRIP SYSTEM FLUSH PLUG OUTLET (SEE DETAIL)
  - ELECTRIC SOLID STATE CONTROLLER, RAINMASTER RME CENTER II-SIZE AS NOTED ON PLANS. PROVIDE WITH HEAVY DUTY LIGHTNING/SURGE PROTECTION.
  - WIRING AND ELECTRICAL CONDUIT (SCHEDULE 80, RENT FOR CONTROLLER POWER SERVICE CONNECTION)
  - ALL IRRIGATION VALVE BOXES TO BE CARBON/BRONZE ANTI-CORROSION COATING BOLT DOWN 1/2" NOZZLES (CAN COLOR IN GRANITE AREAS, GREEN IN TURF AREAS) (SEE DETAILS AND NOTES), PROVIDE STAINLESS STEEL BOLTS.
  - CONTROL VALVE KEY CONTROL VALVE ASSIGNMENT
  - ALL WIRING TO BE UL APPROVED #14 MN. FOR DIRECT BURIAL. SOLID COPPER. WIREGIZE SEE AS NECESSARY TO CORRECT VOLTAGE REQUIRED TO PROVIDE AUTOMATIC OPERATION OF ALL VALVES.
  - WHERE PIPING AND WIRING INSTALLATIONS ARE TO BE SLEEVED, INSTALL IN SEPARATE SLEEVES.
  - CONTRACTOR TO VERIFY A MINIMUM WATER PRESSURE OF 72 P.S.I. AT OUTLET SOURCE.



NO.	DATE	DESCRIPTION



**McCloskey + Peltz, Inc.**  
 LANDSCAPE ARCHITECTS  
 200 West Elliot Street Suite 110  
 Tempe, Arizona 85284  
 Phone: (602) 538-8277



Irrigation Plan  
 Parkway Improvement District 07-10  
**MADERA PARC**  
 PREPARED FOR: Town of Gilbert

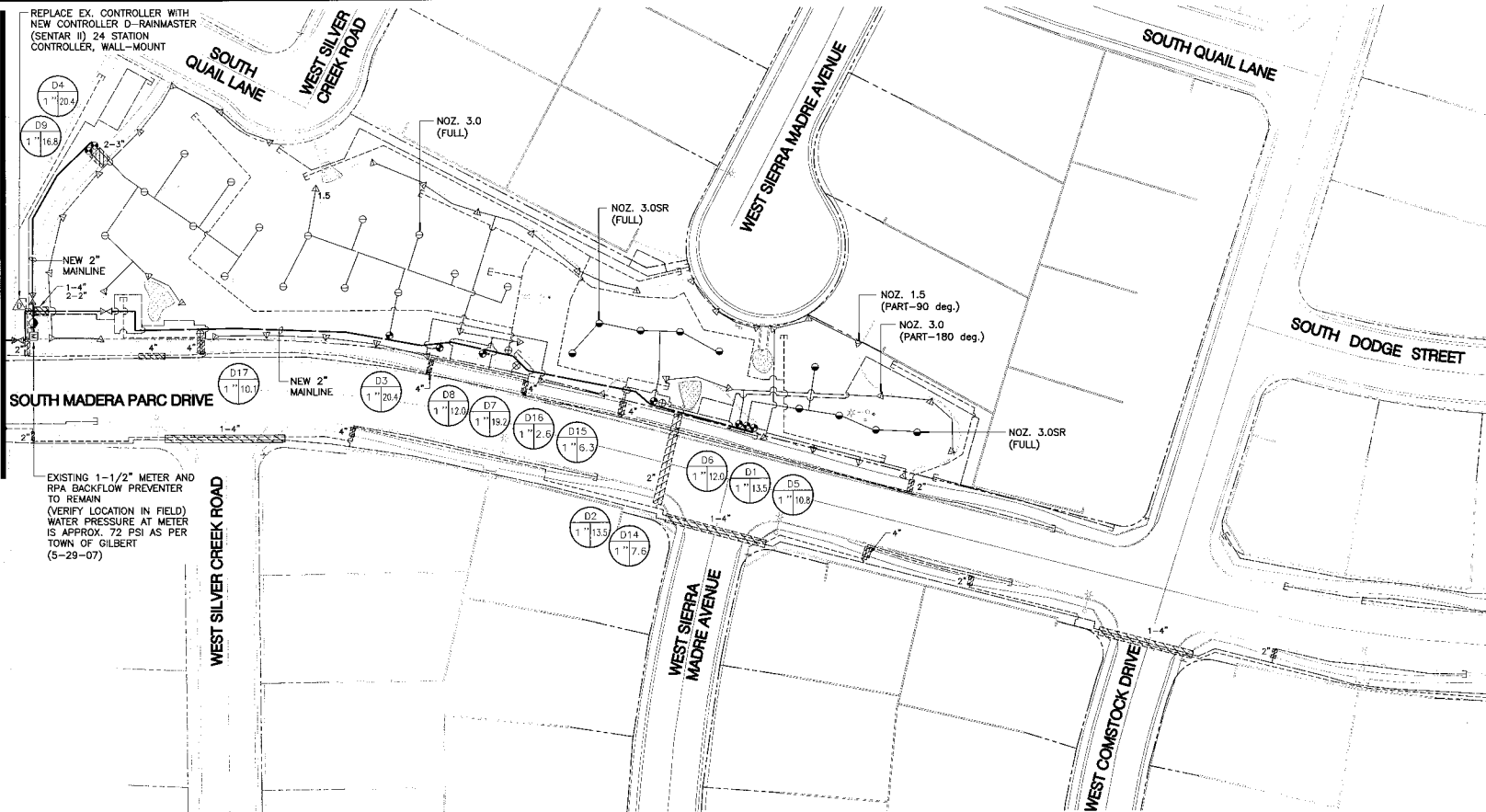
DESIGNED BY: MPH  
 DRAWN BY: BCD  
 CHECKED BY: DGM  
 PROJECT NO: 06422  
 DATE: 1/2008

DRAWING NO.  
**L-9**  
 SHEET 9 OF 21

MATCHLINE F SEE DRAWING L-9

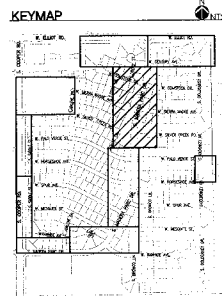
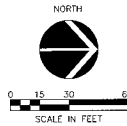
MATCHLINE G SEE DRAWING L-11

MATCHLINE H SEE DRAWING L-11



**IRRIGATION MATERIALS LEGEND**

SYMBOL	DESCRIPTION	SYMBOL	DESCRIPTION
(M)	EXISTING WATER METER TO REMAIN (SIZE AND LOCATION AS SHOWN ON PLANS)	SHRUBS	NEW 3/4" DRIP LATERAL, CLASS 200 PVC PIPE (UNLESS OTHERWISE NOTED ON PLANS)
(P)	EXISTING BACKFLOW PREVENTER TO REMAIN (SEE PLANS FOR LOCATION)	1/2"	1/2" DRIP SUBLATERAL (NOT SHOWN), CLASS 3/5 PVC PIPE. ALL SUBLATERAL PIPE SHALL BE PVC CLASS 315. PROVIDE AND INSTALL ALL SUBLATERAL PIPE LENGTHS AND FITTINGS AS NECESSARY FROM LATERAL PIPE TO EMITTER INSTALLATION AT EACH PLANT (SEE DETAILS)
(S)	NEW SCHEDULE 40 PVC SLEEVE (ALL PIPING AND WIRING UNDER PAVEMENT TO BE SLEEVED) (SIZE AS NOTED)	HUNTER I-60-MOS	HUNTER I-60-MOS, 1-60-365 4" POP-UP ROTOR TURF SPRAY
(M)	NEW MAINLINE SCHEDULE 40 PVC - 2-1/2" AND SMALLER (SIZE AS NOTED)	▲ ○	STANDARD NOZZLES AS LABELED ON PLANS
(M)	NEW ISOLATION BALL VALVE - 2" AND "SMALLER"-HIBCO MODEL T-585 (LINE SIZE) (SEE DETAIL)	▲ ○	SHORT RADIUS NOZZLES AS LABELED ON PLANS
(M)	NEW ISOLATION GATE VALVE 2-1/2" AND GREATER-HIBCO F-619-RW (LINE SIZE) (SEE DETAIL)	▲ ○	HUNTER I-60-MOS, 1-60-365 4" POP-UP ROTOR TURF SPRAY
(M)	NEW EMITTER VALVE MANIFOLD ASSEMBLY INCLUDES: RAINBIRD PEB SERIES ELECTRIC ROTOR CONTROL VALVE, LINE SIZE BRASS RESILIENT SEATED BALL VALVE WITH FULL PORT OPENINGS AS PRODUCTS 45, PLASTIC SPIN CLEAN FILTER WITH 120 MESH SCREEN, AND SHOWER LOW FLOW PRESSURE REDUCING VALVE (FOR FLOWS 1-8 GPM) (PWR-30L) OR MEDIUM FLOW PRESSURE REDUCING VALVE (FOR FLOWS 2-20 GPM) (PWR-30M) - 3/4" PRESET AT 30 PSF (SEE DETAIL)	▲ ●	HUNTER INSTITUTIONAL SERIES - 4" POP UP TURF SPRAY HEADS 8 SERIES - 7'-9" RADIUS 10 SERIES - 10'-11" RADIUS 12 SERIES - 12'-10" RADIUS 15 SERIES - 14'-10" RADIUS 17 SERIES - 16'-17" RADIUS
(M)	NEW REMOTE CONTROL VALVE - (SEE PER PLAN RAINBIRD PEB SERIES ELECTRIC ROTOR CONTROL VALVE WITH LINE SIZE BRASS RESILIENT SEATED BALL VALVE WITH FULL PORT OPENINGS ON INLET)	PER EMITTER SCHEDULE	NEW MULTI OUTLET EMITTER - BOWSMITH M200 SERIES - (1.0 AND 2.0 GPM OUTLETS @ 20 PSI) (TREES) WITH SWIVEL OUTLET 90° ELBOWS FOR EACH DISTRIBUTION TUBE (SEE DETAILS AND SCHEDULE)
(TURF)	NEW LATERAL (SIZE PER SCHEDULE), CLASS 200 PVC PIPE	PER EMITTER SCHEDULE	NEW SINGLE OUTLET EMITTER - BOWSMITH S200 SERIES - (0.5 AND 1.0 GPM OUTLETS @ 20 PSI) (SHRUBS) (SEE DETAIL AND SCHEDULE)
(TREES)	NEW 3/4" DRIP LATERAL, CLASS 200 PVC PIPE (UNLESS OTHERWISE NOTED ON PLANS)		



UNLESS OTHERWISE NOTED ON IRRIGATION PLANS, ALL EXISTING AT GRADE OR ABOVE GRADE IRRIGATION COMPONENTS TO BE REMOVED. THIS INCLUDES, BUT IS NOT LIMITED TO ELECTRIC VALVES, VALVE BOXES, SPRAY HEADS, BUBBLERS, EMITTER DISTRIBUTION LINES AND CONTROLLERS.

ALL EXISTING IRRIGATION BELOW GRADE (PVC PIPING) TO BE ABANDONED IN PLACE, UNLESS DISTURBED DURING NEW CONSTRUCTION. REMOVE AND DISPOSURE AS NECESSARY.

CONTRACTOR SHALL MAINTAIN/RESTORE IRRIGATION SERVICE TO ALL EXISTING LANDSCAPE PLANTING AND TURF AREAS TO REMAIN.

NEW LANDSCAPE AND IRRIGATION INSTALLATION TO BE PHASED AS PER SHEET L-21.

REVISIONS	NO.	DATE	DESCRIPTION



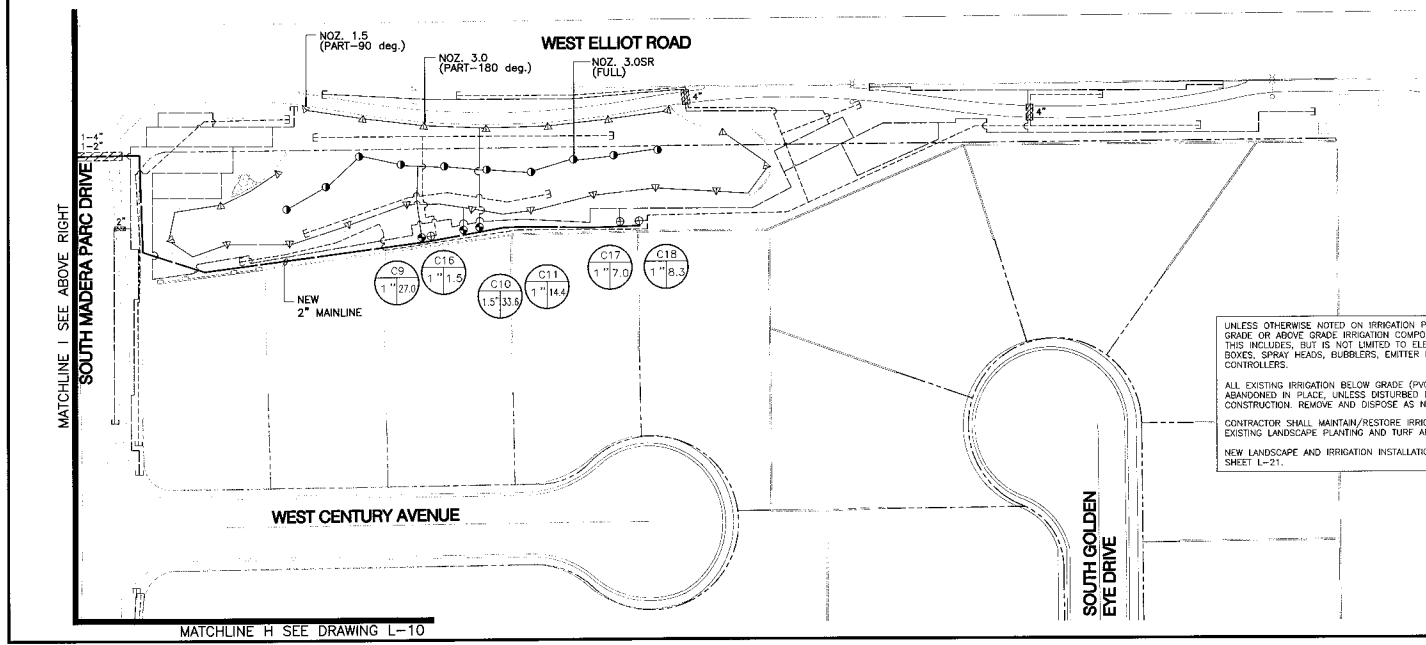
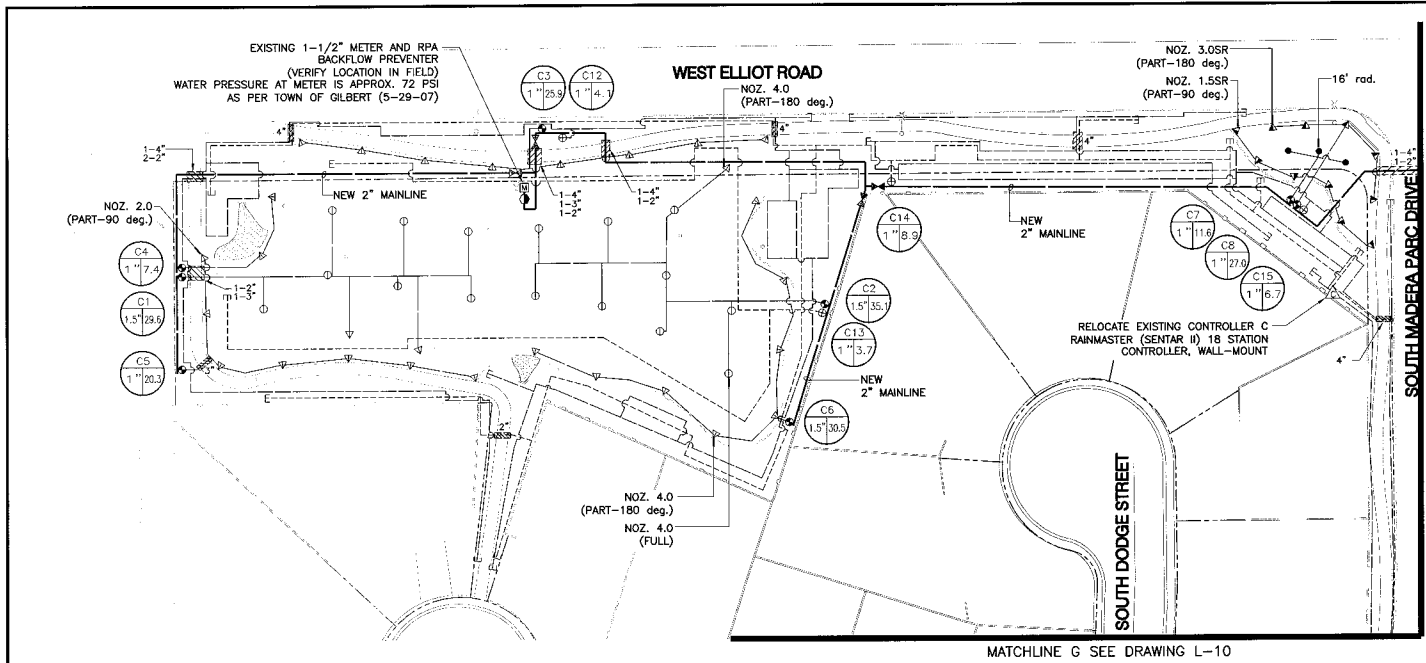
**McCloskey + Peltz, Inc.**  
LANDSCAPE ARCHITECTS  
One West Elliot Street Suite 110  
Tempe, Arizona 85284  
Phone: (480) 338-8777  
Fax: (480) 331-1774



Irrigation Plan  
Parkway Improvement District 07-10  
**MADERA PARC**  
PREPARED FOR: Town of Gilbert

DESIGNED BY: MPI  
DRAWN BY: BCD  
CHECKED BY: DCM  
PROJECT NO: 06422  
DATE: 1/2008

DRAWING NO.  
**L-10**  
SHEET 10 OF 21



**IRRIGATION MATERIALS LEGEND**

- | SYMBOL               | DESCRIPTION  |
|----------------------|--|
| ⊕                    | EXISTING WATER METER TO REMAIN (SIZE AND LOCATION AS SHOWN ON PLANS)   |
| ⊖                    | EXISTING BACKFLOW PREVENTER TO REMAIN (SEE PLANS FOR LOCATION)   |
| ⊕                    | NEW SCHEDULE 40 PVC GLOBE (ALL PIPING AND WIRING UNDER PAVEMENT TO BE SLEEVED) (SIZE AS NOTED)   |
| —                    | NEW MAINLINE SCHEDULE 40 PVC - 2-1/2" AND SMALLER (SIZE AS NOTED)  |
| —                    | NEW ISOLATION BALL VALVE - 2" AND SMALLER-NIBCO MODEL 1-585 (LINE SIZE) (SEE DETAIL)   |
| —                    | NEW ISOLATION GATE VALVE 2-1/2" AND GREATER-NIBCO F-618-RW (LINE SIZE) (SEE DETAIL)  |
| ⊕                    | NEW EMITTER VALVE MANIFOLD ASSEMBLY INCLUDES: RANDORO PEB SERIES REMOTE CONTROL VALVE, LINE SIZE BRASS RESILIENT SEATED BALL VALVE WITH FULL PORT OPENINGS AS PROVIDED, PLASTIC SPRING CLEAN FILTER WITH 150 MESH SCREEN AND SPRINGER LOW FLOW PRESSURE REDUCING VALVE (FOR FLOWS 1-8 GPM) (FWR-300) OR MEDIUM FLOW PRESSURE REDUCING VALVE (FOR FLOWS 2-20 GPM) (FWR-30MF) - 3/4" PRESET AT 30 PSI (SEE DETAIL) |
| ⊕                    | NEW REMOTE CONTROL VALVE - (SEE PER PLAN) RANDORO PEB SERIES ELECTRIC REMOTE CONTROL BALL VALVE WITH FULL PORT OPENINGS ON INLET   |
| —                    | NEW LATERAL (SIZE PER SCHEDULE), CLASS 200 PVC PIPE (UNLESS OTHERWISE NOTED ON PLANS)  |
| —                    | NEW 3/4" DRIP LATERAL, CLASS 200 PVC PIPE (UNLESS OTHERWISE NOTED ON PLANS)  |
| —                    | NEW 3/4" DRIP LATERAL, CLASS 200 PVC PIPE (UNLESS OTHERWISE NOTED ON PLANS)  |
| —                    | 1/2" DRIP SUBLATERAL (NOT SHOWN), CLASS 200 PVC PIPE - ALL SUBLATERALS SHALL BE PVC CLASS 200, PROVIDE AND INSTALL ALL SUBLATERAL PIPE LENGTHS AND FITTINGS AS NECESSARY FROM LATERAL PIPE TO EMITTER INSTALLATION AT EACH PLANT (SEE DETAILS)   |
| —                    | HUNTER I-20-ADS, I-20-365 4" POP-UP ROTOR TURF SPRAY   |
| —                    | STANDARD NOZZLES AS LABELED ON PLANS   |
| —                    | SHORT RADIUS NOZZLES AS LABELED ON PLANS   |
| —                    | HUNTER I-20-ADS, I-20-365 4" POP-UP ROTOR TURF SPRAY   |
| —                    | HUNTER INSTITUTIONAL SERIES - 4" POP UP<br>B SERIES - 7'-0" RADIUS<br>12 SERIES - 10'-0" RADIUS<br>15 SERIES - 14'-0" RADIUS<br>17 SERIES - 17'-0" RADIUS  |
| PER EMITTER SCHEDULE | NEW MULTI-OUTLET EMITTER - BOWSWITH M200 SERIES - (1.0 AND 2.0 GPM) OUTLETS @ 20' (SPRAYS WITH SWING OUTLET & SLIDING FOR EACH DISTRIBUTION TUBE (SEE DETAILS AND SCHEDULES)   |
| PER EMITTER SCHEDULE | NEW SINGLE OUTLET EMITTER - BOWSWITH S200 SERIES - (0.6 AND 1.0 GPM) OUTLETS @ 20' (SHRUBS) (SEE DETAIL AND SCHEDULE)  |
| —                    | DRIP SYSTEM FLUSH PLUG OUTLET (SEE DETAIL)   |
| —                    | ELECTRIC SOLID STATE CONTROLLER, RAINMASTER RME SENTAR II-SIZE AS NOTES ON PLANS, PROVIDE WITH HEAVY DUTY LIGHTNING/SURGE PROTECTION   |
| —                    | WIRING AND ELECTRICAL CONDUIT (SCHEDULE 80, GRAY) FOR CONTROLLER POWER SERVICE CONNECTION  |
| —                    | ALL IRRIGATION VALVE BOXES TO BE CARBON/BROOKS AMETEK OR EQUAL BOLT DOWN LID MODELS (CAN COLOR IN GRANITE AREAS, GREEN IN TURF AREAS) (SEE DETAILS AND NOTES), PROVIDE STAINLESS STEEL BOLTS.  |
| —                    | CONTROL VALVE (CV) CONTROLLER STATION ASSIGNMENT   |
| —                    | SIZE   |
| —                    | ALL WIRING TO BE UL APPROVED #14 MIN. FOR DIRECT BURIAL, 90° COPPER, WIRE SIZE AS NECESSARY TO CONDUCT VOLTAGE REQUIRED TO PROVIDE AUTOMATIC OPERATION OF ALL VALVES.  |
| —                    | WHERE WIRING AND WIRING INSTALLATIONS ARE TO BE SLEEVED, INSTALL IN SEPARATE SLEEVES.  |
| —                    | CONTRACTOR TO VERIFY A MINIMUM WATER PRESSURE OF 72 P.S.I. AT WATER SOURCE.  |

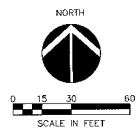
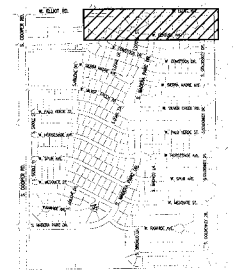
UNLESS OTHERWISE NOTED ON IRRIGATION PLANS, ALL EXISTING AT GRADE OR ABOVE GRADE IRRIGATION COMPONENTS TO BE REMOVED. THIS INCLUDES, BUT IS NOT LIMITED TO, ELECTRIC VALVES, VALVE BOXES, SPRAY HEADS, BUBBLERS, EMITTER DISTRIBUTION LINES AND CONTROLLERS.

ALL EXISTING IRRIGATION BELOW GRADE (PVC PIPING) TO BE ABANDONED IN PLACE, UNLESS DISTURBED DURING NEW CONSTRUCTION. REMOVE AND DISPOSE AS NECESSARY.

CONTRACTOR SHALL MAINTAIN/RESTORE IRRIGATION SERVICE TO ALL EXISTING LANDSCAPE PLANTING AND TURF AREAS TO REMAIN.

NEW LANDSCAPE AND IRRIGATION INSTALLATION TO BE PHASED AS PER SHEET L-21.

**KEYMAP**



REVISIONS	DATE	DESCRIPTION



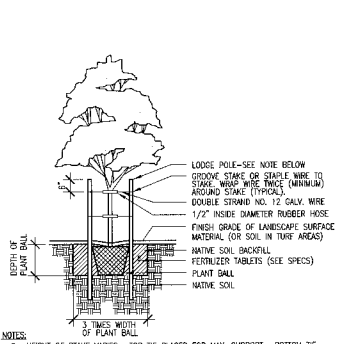
**McCloskey • Peltz, Inc.**  
LANDSCAPE ARCHITECTS  
1000 N. 110th Street, Suite 110  
Phoenix, AZ 85028  
Phone: (602) 953-8777 Fax: (602) 953-7374



Irrigation Plan  
Parkway Improvement District 07-10  
**MADERA PARC**  
PREPARED FOR: Town of Gilbert

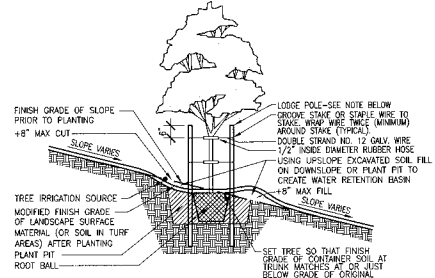
DESIGNED BY: MPI  
DRAWN BY: BCD  
CHECKED BY: DCM  
PROJECT NO: 06422  
DATE: 1/2008

DRAWING NO:  
**L-11**  
SHEET 11 OF 21



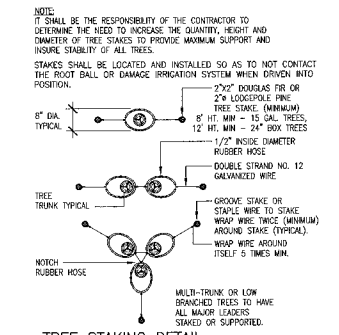
- NOTES:**
- HEIGHT OF STAKE VARIES. TOP TO BE PLACED FOR MAX SUPPORT. BOTTOM TO BE PLACED 1/2 WAY BETWEEN TOP TIE AND GROVE. SET TREE STAKING DETAIL.
  - ONLY STAKE TREES THAT HAVE PREVIOUSLY BEEN STAKED IN THE NURSERY.
  - STAKES SHALL BE LOCATED AND INSTALLED SO AS TO NOT CONTACT THE ROOT BALL OR DAMAGE IRRIGATION SYSTEM WHEN DRIVEN INTO POSITION.

**1 TREE PLANTING**  
N.T.S.

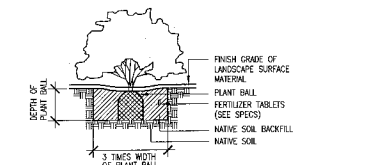


- NOTES:**
- PLANTING AND STAKING SHALL BE IN ACCORDANCE WITH DETAILS AND SPECIFICATIONS.
  - ALWAYS SET TREE TO MINIMIZE UPSLOPE CUT AND DOWNSLOPE FILL.
  - ROUND ALL CHANGES BETWEEN SURFACE SLOPE TRANSITIONS.
  - LOCATE IRRIGATION SOURCE ON UPSLOPE SIDE OF PLANT PIT.

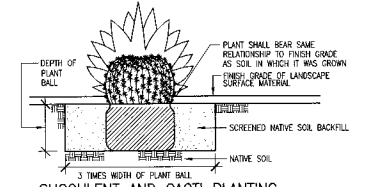
**2 TREE PLANTING ON SLOPE**  
N.T.S.



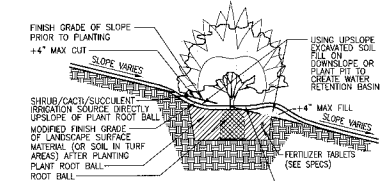
**3 TREE STAKING DETAIL**  
N.T.S.



**4 SHRUB PLANTING**  
N.T.S.



**5 SUCCULENT AND CACTI PLANTING**  
N.T.S.

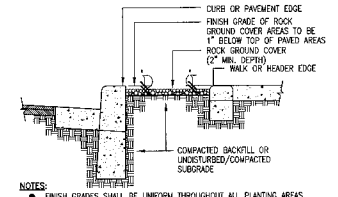


- NOTES:**
- PLANTING AND STAKING SHALL BE IN ACCORDANCE WITH DETAILS AND SPECIFICATIONS.
  - ALWAYS SET SHRUB/CACTI/SUCCULENT TO MINIMIZE UPSLOPE CUT AND DOWNSLOPE FILL.
  - ROUND ALL CHANGES BETWEEN SURFACE SLOPE TRANSITIONS.
  - LOCATE IRRIGATION SOURCE ON UPSLOPE SIDE OF PLANT ROOT BALL.

**6 SHRUB/CACTI/SUCCULENT PLANTING ON SLOPE**  
N.T.S.

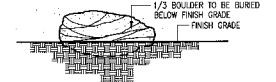
IF IMPERVIOUS SUBSURFACE CALICHE, ROCK OR HARDPAN EXISTS BENEATH EXCAVATED PLANT PIT, CONTRACTOR SHALL COMPLETE NECESSARY REMOVAL OR PENETRATION OF IMPERVIOUS MATERIAL TO PROVIDE NECESSARY PLANT PIT DRAINAGE AT A MINIMUM RATE OF 1 INCH PER HOUR. CONTRACTOR SHALL BE RESPONSIBLE FOR VERIFYING ADEQUATE PLANT PIT DRAINAGE PRIOR TO PLANT INSTALLATION.

ALL NATIVE SOIL BACKFILL WITHIN 18\"/>

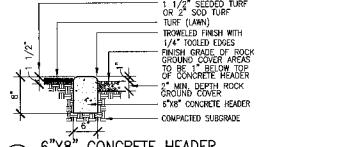


- NOTES:**
- FINISH GRADES SHALL BE UNIFORM THROUGHOUT ALL PLANTING AREAS. ALL ROCK GROUND COVER DEPTH SHALL BE AFTER FINISH GRADING, WATER RUNOFF AND SETTLEMENT.
  - CONTRACTOR SHALL BE RESPONSIBLE TO COORDINATE WITH OTHER FORCES AS NECESSARY TO PROVIDE ALL FILL AND ROUGH GRADING REQUIRED TO ACHIEVE FINISH GRADE OF ROCK GROUND COVER AS INDICATED HEREIN.
  - WATER WASH ALL ROCK GROUND COVER SURFACES TO REMOVE FINES AND DUST.

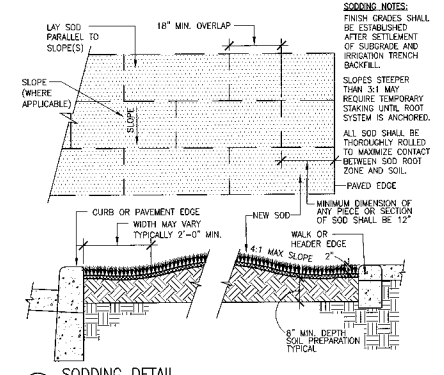
**7 FINISH GRADE ROCK GROUND COVER**  
N.T.S.



**8 BOULDER INSTALLATION**  
N.T.S.



**9 6\"/>**



**10 SODDING DETAIL**  
N.T.S.

**SODDING NOTES:**

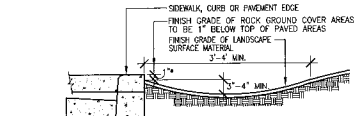
FINISH GRADES SHALL BE ESTABLISHED AFTER SETTLEMENT OF SUBGRADE AND IRRIGATION TRENCH BACKFILL.

SLOPES STEEPER THAN 3:1 MAY REQUIRE TEMPORARY STAKING UNTIL ROOT SYSTEM IS ANCHORED.

ALL SOD SHALL BE THOROUGHLY ROLLED TO MAXIMIZE CONTACT BETWEEN SOD ROOT ZONE AND SOIL.

PAVED EDGE

MINIMUM DIMENSION OF ANY PIECE OR SECTION OF SOD SHALL BE 12\"/>



- GENERAL NOTES:**
- NUISANCE SWALES SHALL BE LOCATED BETWEEN ALL PAVEMENT EDGES AND ANY ADJACENT ELEVATED LANDSCAPE SURFACES.
  - FINISH GRADING (PRIOR TO PLACEMENT OF PLANTS AND ROCK GROUND COVER) SHALL INCLUDE GRADING / CONSTRUCTING NUISANCE SWALES.
  - 1 1/2\"/>

**11 NUISANCE WATER SWALE**  
N.T.S.

NO.	DATE	DESCRIPTION

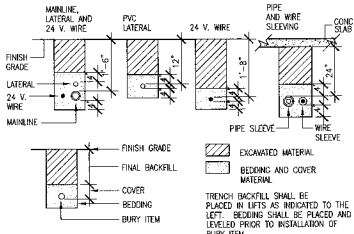


**McCloskey + Peltz, Inc.**  
LANDSCAPE ARCHITECTS  
11000 N. 19th Ave. Suite 110  
Phoenix, AZ 85024  
Phone: (480) 354-9777  
Fax: (480) 354-1774

Landscape Details  
Parkway Improvement District 07-10  
**MADERA PARC**  
PREPARED FOR: Town of Gilbert

DESIGNED BY: MPH  
DRAWN BY: BCD  
CHECKED BY: DCM  
PROJECT NO: 08422  
DATE: 1/2008

DRAWING NO.  
**L-12**  
SHEET 12 OF 21

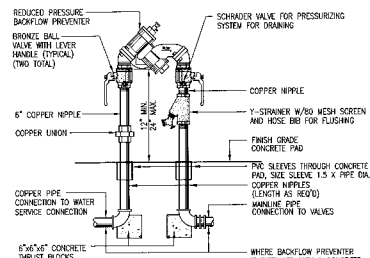


**NOTE:**

- SLEEVE ALL PIPE AND WIRE SEPARATELY.
- ALL PIPE TO BE INSTALLED PER MANUFACTURER'S SPECIFICATIONS. PLASTIC PIPE TO BE "SMILED" IN TRENCHES. PROVIDE A MIN. OF 2" CLEARANCE TO SIDE OF TRENCH AND BETWEEN PIPES.
- ALL 120 V. WIRING SHALL BE INSTALLED IN ACCORDANCE WITH LOCAL CODE REQUIREMENTS. TAPE AND BUNDLE WIRES EVERY 10', PROVIDE LOGS 20" LOOP AT ALL CHANGES OF DIRECTION OVER 30°.

**1 IRRIGATION TRENCHING**

N.T.S.

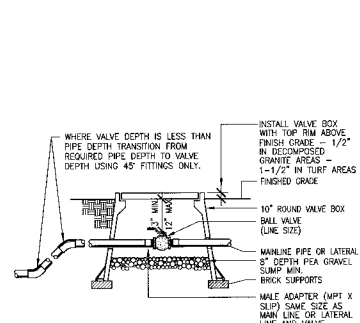


**NOTE:**

- LOCAL CODE SHALL COVER ALL INSTALLATION REQUIREMENTS.
- ALL CONNECTIONS SHALL BE COPPER OR BRASS.
- COORDINATE INSTALLATION OF CONCRETE SLAB AND BACKFLOW PREVENTER ENCLOSURE CASE IF INDICATED.

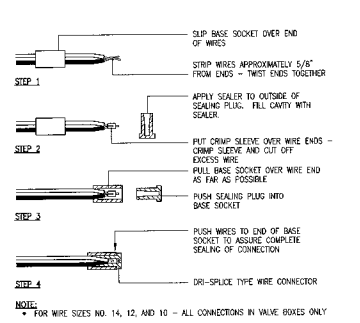
**2" OR SMALLER REDUCED PRESSURE BACKFLOW PREVENTER**

N.T.S.



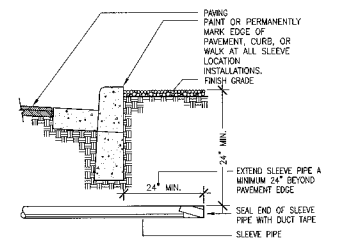
**3 BALL VALVE/ISOLATION VALVE**

N.T.S.



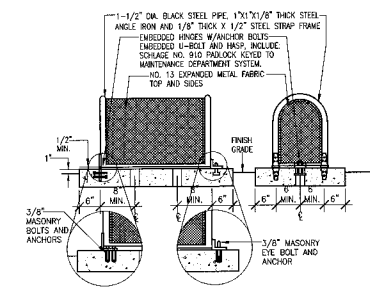
**4 TYPICAL WIRE CONNECTION**

N.T.S.



**5 IRRIGATION SLEEVE**

N.T.S.

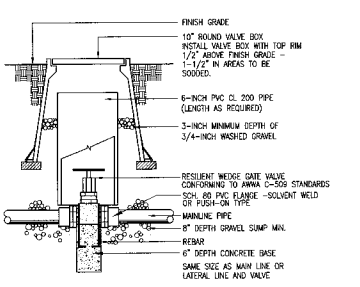


**OPTIONAL NON-EMBEDDED HINGE INSTALLATION**

- 6" THICK CONCRETE PAD SHALL HAVE TOP SURFACE SLOPED AT 1/2% W/ SMOOTH FINISH. ALL OPENING IN PAD SHALL BE SLOPED AT 1-1/2% LARGER DIAMETER THAN PENETRATING PIPE SIZE.
- THE ENCLOSURE SHALL BE SIZED, POSITIONED AND INSTALLED FOR UNHINDERED OPERATION, ACCESS AND CLEARANCE AROUND TRAPS ENCLOSED.
- ALL HINGED CONNECTION LOCATIONS AND HARDWARE TO BE TAMPER PROOF.
- WELD ALL JOINTS CONTAINED AND GRIND SMOOTH ALL ROUGH SURFACES OR SWAMP EDGES. PRIME AND PAINT ALL SURFACES W/ 2 COATS RUSTPROOF OR SWAMP PROOF.
- ALL ANCHORS AND HARDWARE TO BE STAINLESS STEEL.

**6 BACKFLOW PREVENTER ENCLOSURE**

N.T.S.

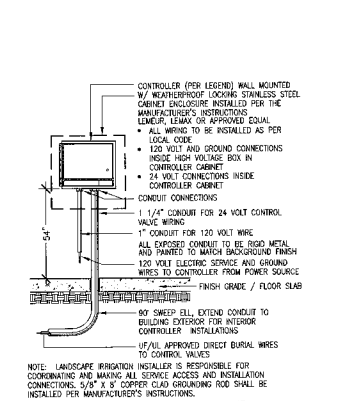


**GENERAL NOTES:**

- NOMINAL SIZE OF GATE VALVE TO MATCH NOMINAL SIZE.
- INSTALL A 4-INCH THICK CONCRETE PAD BELOW VALVE WITH NO. 4 REBAR WHEN USING PUSH ON TYPE VALVES.
- RESILIENT WEDGE GATE VALVE MAY HAVE EITHER MECHANICAL JOINT, PUSH-ON ENDS, OR FLANGE ENDS. THE OPERATOR IS A WRENCH NUT.

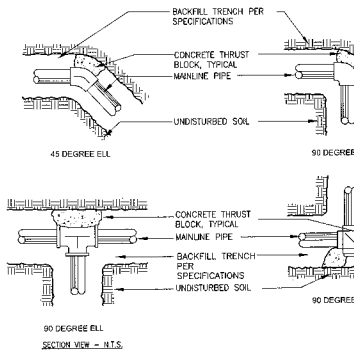
**7 ISOLATION GATE VALVE**

N.T.S.



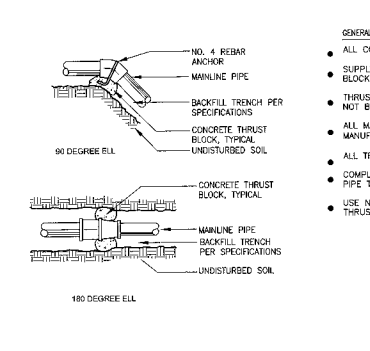
**8 WALL MOUNTED CONTROLLER**

N.T.S.



**9 THRUST BLOCKS**

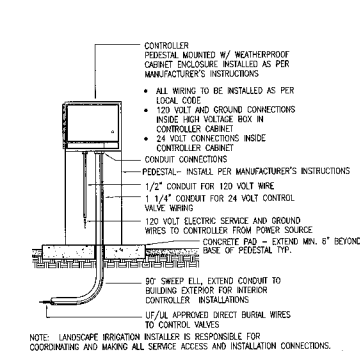
N.T.S.



**NOTE:** PROVIDE SMOOTH EDGES FOR ALL CONCRETE AT THRUST BLOCKS TO AVOID DAMAGE TO PIPES

**10 PEDESTAL MOUNTED CONTROLLER**

N.T.S.



**11 PEDESTAL MOUNTED CONTROLLER**

N.T.S.

REVISIONS	NO.	DATE	DESCRIPTION

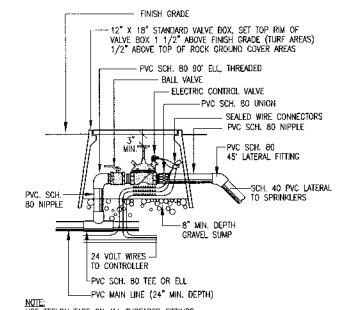


**McCloskey + Peltz, Inc.**  
 LANDSCAPE ARCHITECTS  
 One West 18th Street, Suite 110  
 Tempe, Arizona 85281  
 Phone: (480) 338-8777

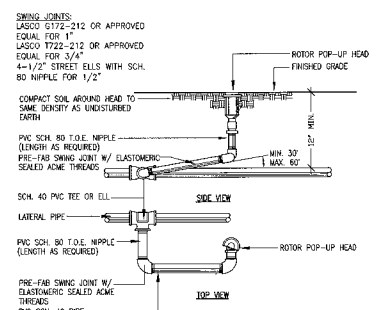
**Prepared For:** Town of Gilbert  
**Project:** Parkway Improvement District 07-10  
**MADERA PARC**

DESIGNED BY: MPI  
 DRAWN BY: BCD  
 CHECKED BY: DCM  
 PROJECT NO: 06422  
 DATE: 1/2008

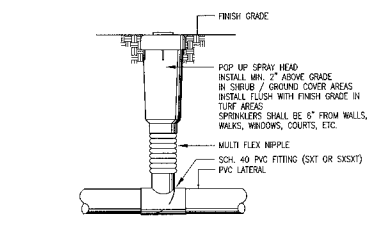
DRAWING NO:  
**L-13**  
 SHEET 13 OF 21



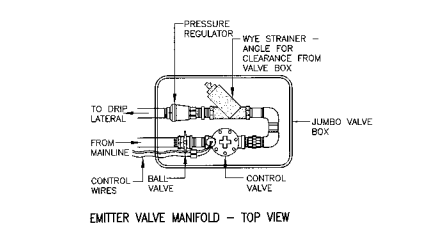
**1 REMOTE CONTROL VALVE (TURF)**  
N.T.S.



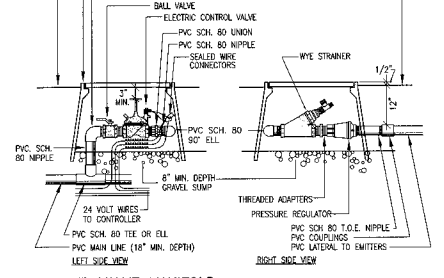
**2 ROTOR HEAD W/ SWING JOINT**  
N.T.S.



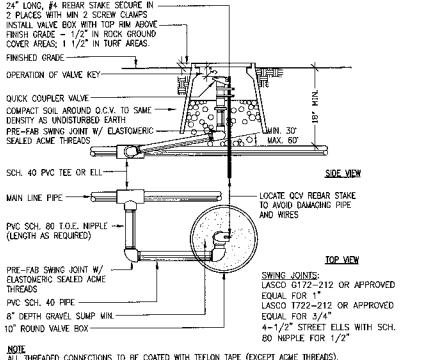
**3 POP UP SPRAY HEAD**  
N.T.S.



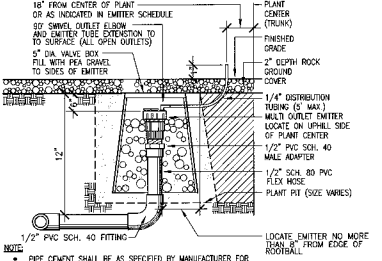
**EMITTER VALVE MANIFOLD - TOP VIEW**



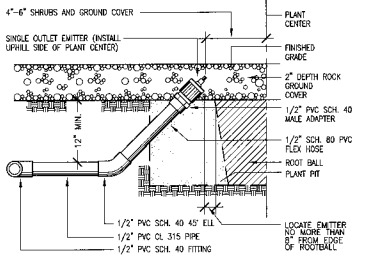
**4 EMITTER VALVE MANIFOLD**  
N.T.S.



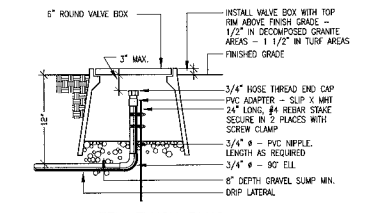
**5 QUICK COUPLER VALVE**  
N.T.S.



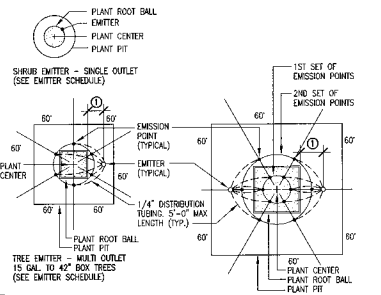
**6 MULTI OUTLET EMITTER IN VALVE BOX**  
N.T.S.



**7 SINGLE OUTLET EMITTER**  
N.T.S.



**8 DRIP SYSTEM FLUSH PLUG**  
N.T.S.



**9 EMITTER LAYOUT**  
N.T.S.

**TREES**

TREE SIZE	NUMBER OF MULTI OUTLET EMITTERS = EMITTER GPH TOTAL	1ST SET OF EMISSION POINTS	2ND SET OF EMISSION POINTS
1.5 GAL.	1 - 1 GPH = 6 GPH	3 @ 12"	
24" BOX	1 - 1 GPH = 6 GPH	4 @ 18"	
30" BOX	1 - 1 GPH = 6 GPH	6 @ 21"	
36" BOX	1 - 2 GPH = 12 GPH	6 @ 24"	
42" BOX	1 - 2 GPH = 12 GPH	6 @ 27"	
48" BOX	2 - 2 GPH = 24 GPH	6 @ 12"	4 @ 42"
54" BOX	2 - 2 GPH = 24 GPH	6 @ 15"	5 @ 45"
EX. LL. TREES	2 - 2 GPH = 24 GPH	6 @ 18"	6 @ 48"
EX. TREES IN TURF	1 - 2 GPH = 12 GPH	6 @ 24"	
EX. F. PALM	1 - 2 GPH = 12 GPH	6 @ 24"	

**SHRUBS**

PLANT	SIZE	EMITTER TYPE (G.P.H.)
ANACARDIA OSHY, KATIE'S RUSSIA, RAIN ELY, AND PONTIFERA	ALL	6 G.P.H. SINGLE OUTLET
ALL OTHER SHRUBS, GROUND COVER, AND ACCENTS	1 OR 5 GAL.	1 G.P.H. SINGLE OUTLET

**10 EMITTER SCHEDULE**  
N.T.S.

PIPE SIZE	FLOW (GPM)	FLOW (GPM)
1/2"	0-4	0-5
3/4"	4-8	4-10
1"	8-15	10-15
1-1/4"	13-22	15-25
1-1/2"	22-30	25-35
2"	30-50	35-55
2-1/2"	50-70	55-80
3"	70-120	80-120
4"	120-200	120-200

**11 PIPE SCHEDULE**  
N.T.S.

- ALL VALVE BOXES TO BE CARBON/BROOKS-AMTEK OR EQUAL.
- ALL LATERAL PIPE TO BE CLASS 200 PVC, 1/2" DRIP SUB-LATERAL - CL. 315 PVC.
- MAINLINE PIPE TO BE SCHEDULE 40 PVC (EQUIV. HUB) - LESS THAN 3" AND CLASS 200 PVC (RING-TITE) - 3" AND GREATER.

NO.	DATE	DESCRIPTION

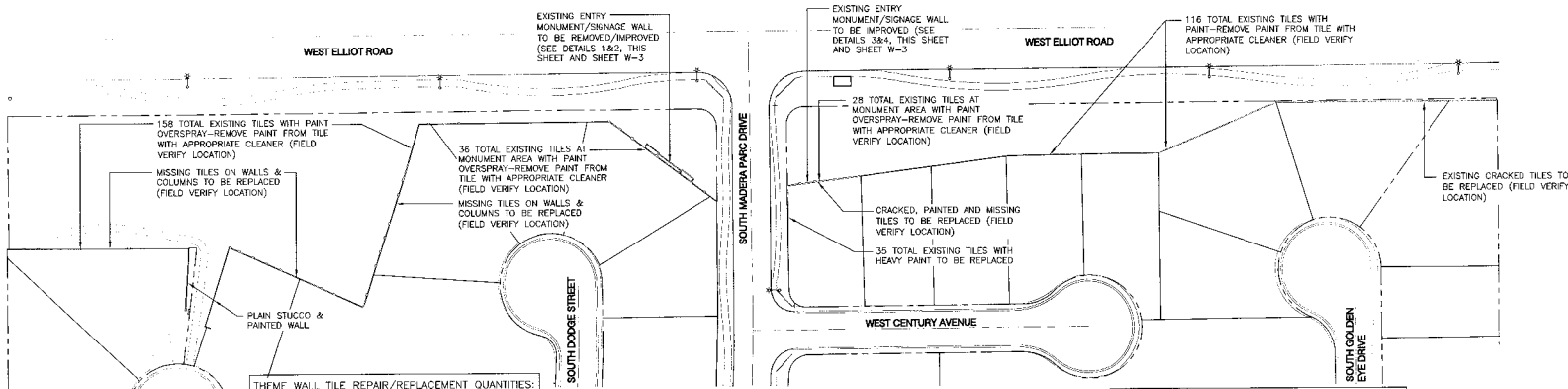


**McCloskey + Peltz, Inc.**  
LANDSCAPE ARCHITECTS  
One West Elst Street, Suite 110  
Tombase, Arizona 85284  
Phone: (480) 338-8777  
Fax: (480) 338-1774

Prepared For: **Town of Gilbert**  
MADERA PARC  
Parkway Improvement District 07-10  
Irrigation Details

DESIGNED BY: NPI  
DRAWN BY: BCD  
CHECKED BY: DCM  
PROJECT NO: 06422  
DATE: 1/2008

DRAWING NO:  
**L-14**  
SHEET 14 OF 21

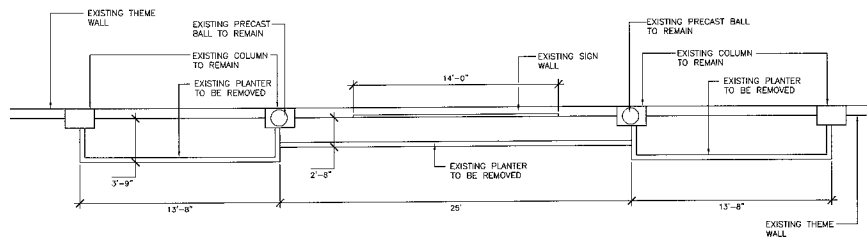


**THEME WALL TILE REPAIR/REPLACEMENT QUANTITIES:**  
ELLIOT RD. WEST OF MADERA PARC DR.

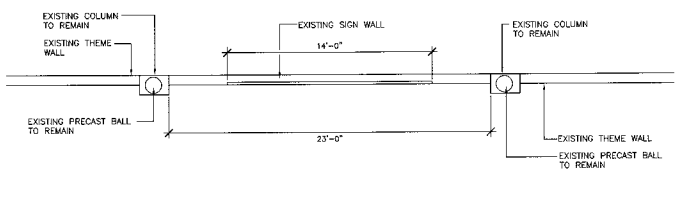
MISSING TILE: 850  
CRACKED TILES: 20  
OVERSPRAY PAINTED TILES TO BE CLEANED: 194  
GROUT REPLACEMENT: 9.6 LIN. FT.

**THEME WALL TILE REPLACEMENT/REPAIR QUANTITIES:**  
ELLIOT RD. EAST OF MADERA PARC DR.

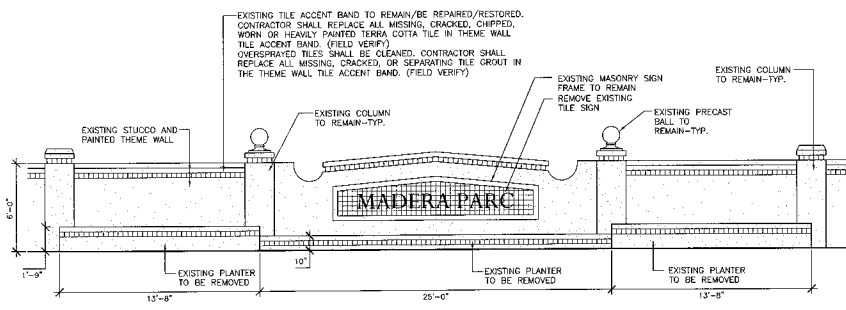
MISSING TILE: 1  
CRACKED TILES: 23  
PAINTED TILES TO BE REPLACED: 35  
OVERSPRAY PAINTED TILES TO BE CLEANED: 144  
GROUT REPLACEMENT: 19.3 LIN. FT.



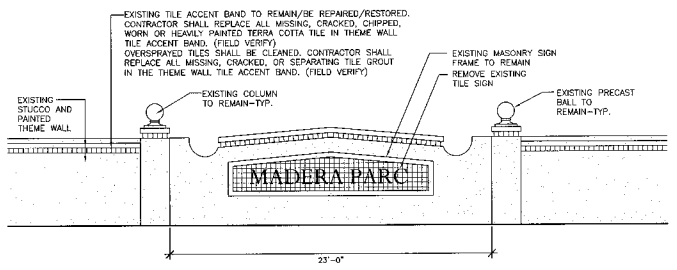
1 EXISTING ELIOTT ROAD ENTRY MONUMENT PLAN VIEW (WEST SIDE)  
SCALE: 1/4"=1'-0"



3 EXISTING ELIOTT ROAD ENTRY MONUMENT PLAN VIEW (EAST SIDE)  
SCALE: 1/4"=1'-0"

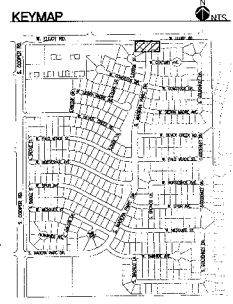


2 EXISTING ELIOTT ROAD ENTRY MONUMENT ELEVATION (WEST SIDE)  
SCALE: 1/4"=1'-0"



4 EXISTING ELIOTT ROAD ENTRY MONUMENT ELEVATION (EAST SIDE)  
SCALE: 1/4"=1'-0"

NOTE:  
SEE SHEET L-17 FOR PROPOSED  
ENTRY MONUMENT SIGN  
IMPROVEMENTS.



REVISED	DATE	DESCRIPTION



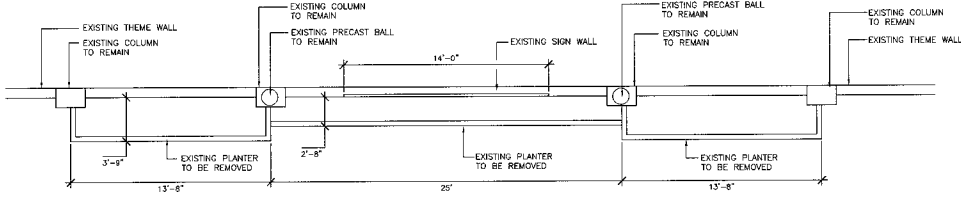
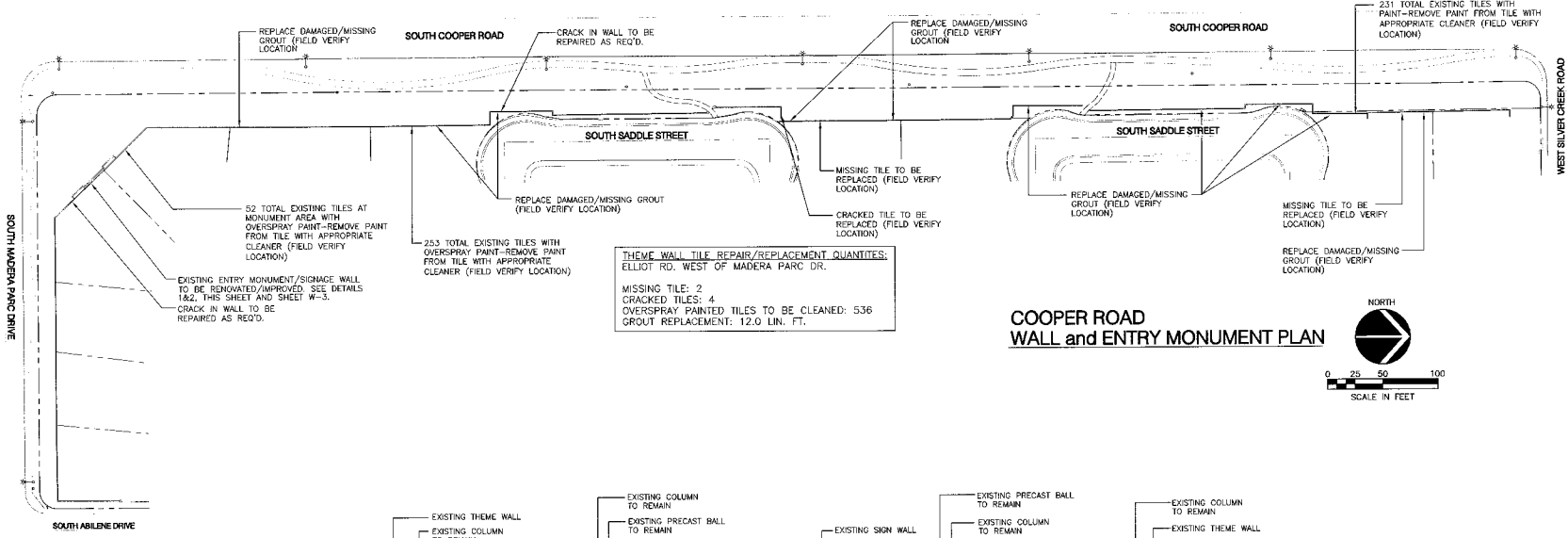
**McCloskey • Peltz, Inc.**  
LANDSCAPE ARCHITECTS  
One West Blair Street Suite 110  
Tempe, Arizona 85283  
Phone: (480) 971-1771  
Fax: (480) 971-1771



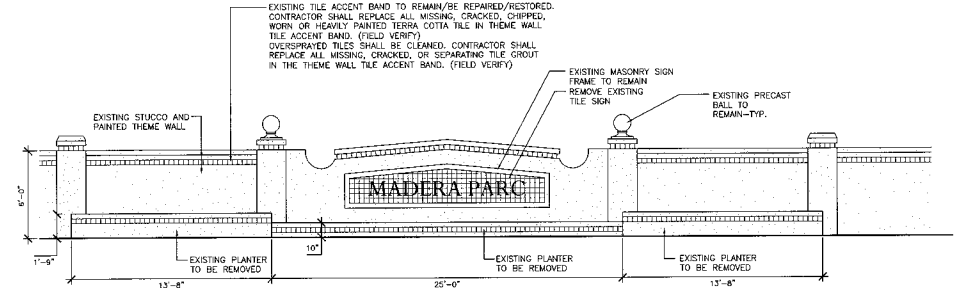
Hardscape / Wall Plan  
Parkway Improvement District 07-10  
**MADERA PARC**  
PREPARED FOR: Town of Gilbert

DESIGNED BY: MPI  
DRAWN BY: BCD  
CHECKED BY: DCM  
PROJECT NO: 06422  
DATE: 12/2008

DRAWING NO.  
**L-15**  
SHEET 15 OF 21

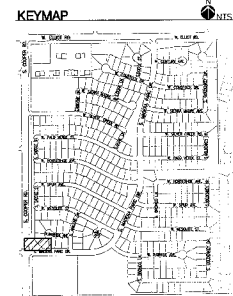


1 EXISTING COOPER ROAD ENTRY MONUMENT PLAN VIEW  
SCALE: 1/4"=1'-0"



2 EXISTING COOPER ROAD ENTRY MONUMENT ELEVATION  
SCALE: 1/4"=1'-0"

NOTE:  
SEE SHEET L-17 FOR PROPOSED  
ENTRY MONUMENT SIGN  
IMPROVEMENTS.



REVISIONS	NO.	DATE	DESCRIPTION



McCloskey • Peltz, Inc.  
LANDSCAPE ARCHITECTS  
City: Madera, CA State: CA  
Phone: (408) 558-8777  
Fax: (408) 558-1774

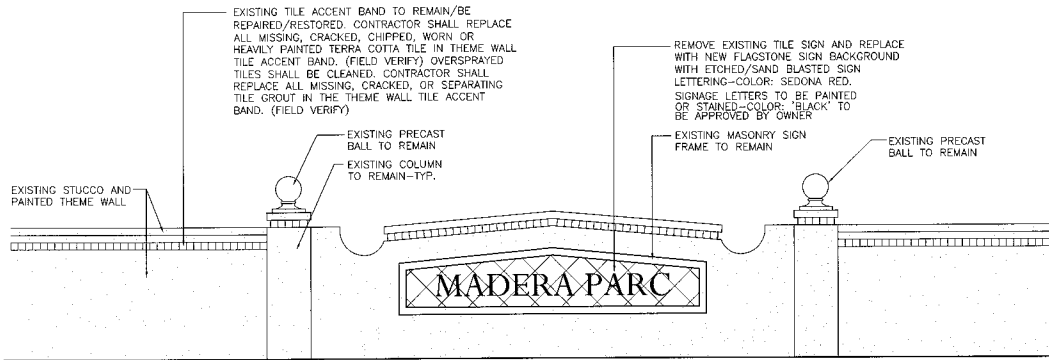


Hardscape / Wall Plan  
Parkway Improvement District 07-10  
**MADERA PARC**  
PREPARED FOR: Town of Gilbert

DESIGNED BY: MPI  
DRAWN BY: BCD  
CHECKED BY: DCM  
PROJECT NO: 08422  
DATE: 1/2008

DRAWING NO.  
**L-16**  
SHEET 16 OF 21

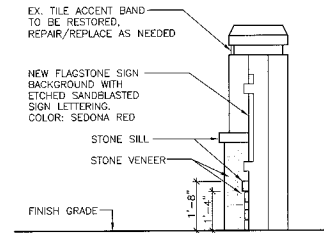




**ENTRY MONUMENT ELEVATION**

3/8"=1'-0"

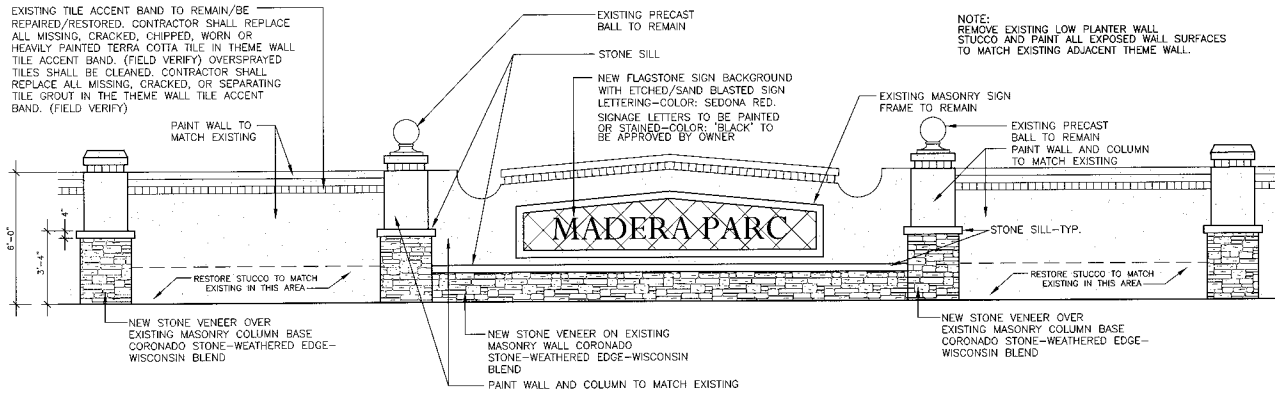
THIS ELEVATION APPLIES TO ELLIOTT ROAD ENTRY MONUMENT (EAST SIDE ONLY)



**ENTRY MONUMENT SECTION**

1/2"=1'-0"

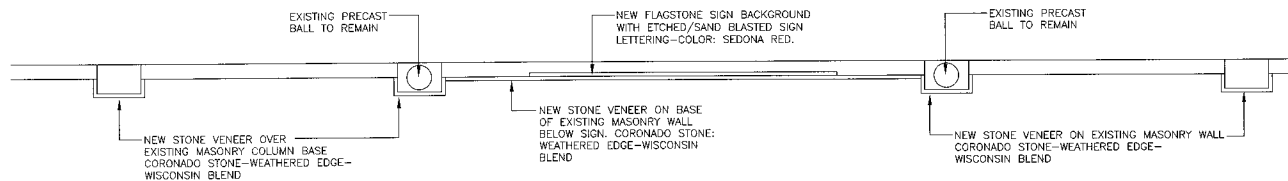
NOTE: THIS SECTION APPLIES TO COOPER ROAD ENTRY AND ELLIOTT ROAD ENTRY MONUMENT (WEST SIDE ONLY)



**ENTRY MONUMENT ELEVATION**

3/8"=1'-0"

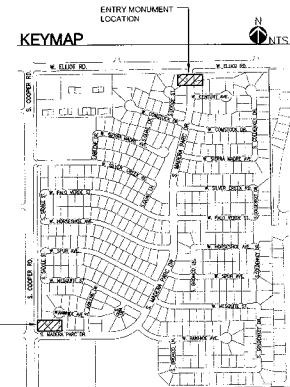
THIS ELEVATION APPLIES TO COOPER ROAD ENTRY AND ELLIOTT ROAD ENTRY MONUMENT (WEST SIDE ONLY)



**ENTRY MONUMENT PLAN VIEW**

3/8"=1'-0"

THIS ELEVATION APPLIES TO COOPER ROAD ENTRY AND ELLIOTT ROAD ENTRY MONUMENT (WEST SIDE ONLY)



NO.	DATE	DESCRIPTION



**McCloskey + Peltz, Inc.**  
 LANDSCAPE ARCHITECTS  
 19810 BIRD HOLLOW DRIVE  
 TEMPE, ARIZONA 85284  
 PHONE: (480) 944-8077

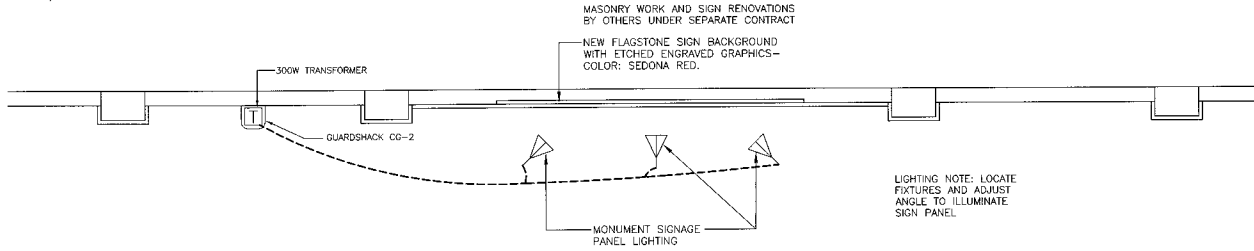


Entry Signage Plan  
 Parkway Improvement District 07-10  
**MADERA PARC**  
 PREPARED FOR: Town of Gilbert

DESIGNED BY: MPI  
 DRAWN BY: BCD  
 CHECKED BY: DCM  
 PROJECT NO: 06422  
 DATE: 1/2008

DRAWING NO.  
**L-17**  
 SHEET 17 OF 21

NOTE:  
ELECTRICAL METER/ POWER SOURCE IS  
EXISTING, FIELD VERIFY.

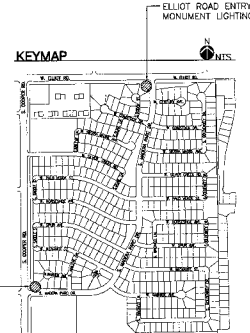
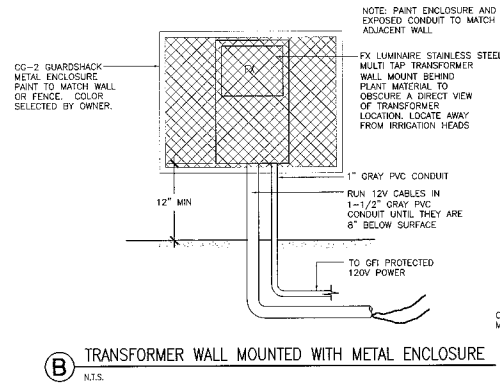
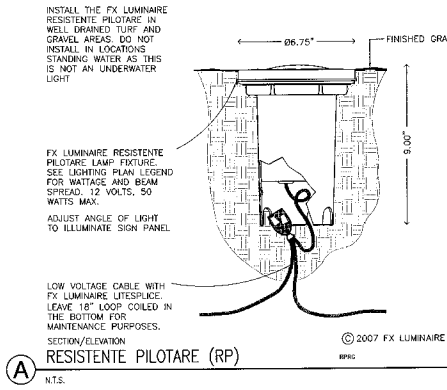


## ENTRY MONUMENT TYPICAL PLAN VIEW

3/8"=1'-0"

SIGN LIGHTING IN 2 LOCATIONS ONLY 1. COOPER ROAD  
2. ELLIOT ROAD WEST SIDE  
NO LIGHTING INCLUDED FOR PHASE 1 ELLIOT ROAD EAST SIDE

## LOW VOLTAGE LIGHTING DETAILS



## LOW VOLTAGE LIGHTING LEGEND

SEE THIS SHEET FOR LOW VOLTAGE LIGHTING DETAILS AND NOTES

SYM.	MANUFACTURER	MODEL	NOTES
☐	FX LUMINAIRE	RP-35-LV-CB	SIGN LIGHT - WIDE BEAM
☐	FX LUMINAIRE	FX-300-TPC	
U	GUARDSHACK	CG-2	OR APPROVED EQUAL

UNLESS OTHERWISE NOTED, ALL LIGHTS  
TO HAVE BRONZE FINISH TYP.

NOTE: PROVIDE PLANT MATERIAL TO  
SCREEN THE TRANSFORMER  
FROM VIEW-TYP.

## LOW VOLTAGE LIGHTING NOTES

### GENERAL

Scope of Work: The supply and installation of a 12 volt landscape lighting system which includes the fixtures specified on Lighting Legend as well as the installation of low voltage transformers, conduit, and direct burial cable as necessary to complete the layout shown on plans. Lighting plans are diagrammatic and intended to show general fixture locations. Contractor is responsible for necessary line (120v) and low voltage (12v) work to complete the lighting design as shown.

Standards: All work performed is to comply with the National Electric Code and applicable local codes and ordinances. Contractor shall possess all necessary licenses to complete the described work. Contractor is to obtain all necessary permits to complete work described.

### INSTALLATION

Contractor is to verify site measurements, grades, existing sleeves, existing plant locations, and existing utilities, equipment and switching controls. Contractor is to provide all necessary components and accessories to complete installation as specified.

- Direct Burial Cable: Cable shown on plans is for fixture grouping only. Cable to be circuit and sized to provide a minimum of 10.5 volts and a maximum of 11.5 volts to all lighting fixtures. Refer to FX Luminaire's "Circuiting Guidelines" included with the transformer. Minimum underground low voltage cable size is 12 gauge multi-strand direct burial. Install cable along edge of hardscape whenever possible. Minimum cable depth is 8". All cable run under hardscape areas shall be installed in sleeves with sweep corners. Leave 24" loops at all fixture locations for final adjustment. All wire junctions shall be waterproofed with FX Luminaire Lite Splice connectors or APPROVED equal. Only fully encapsulated waterproof connectors rated for direct burial will be accepted. Black taped connections will be rejected.
- Fixture location: Verify exact location with Landscape Architect or Owner's agent before commencing installation. All fixtures shall be in a new, unused condition. Equipment shall be the type specified - there will be no substitutions without prior approval from Landscape Architect or Owner's agent. Install all equipment as per manufacturer's specifications and details.
- Transformers: Shall be FX Luminaire stainless steel Multi-Tap sized to be 80% loaded. Transformers to be installed inconspicuously using plant material or site features to obscure a direct view of their locations. Avoid locations that are easily accessible to children or that are in a direct path of irrigation water. Install transformers 12" above finish grade and level. All wires leading to or from transformer shall be in conduit sleeve that is firmly affixed to mounting surface. All junction boxes and other equipment shall be UL approved for wet locations. Paint transformers and any necessary junction boxes or conduit to match the surface on which they are mounted. Install transformers according to manufacturer's specifications and local codes. All exposed metal parts including transformers shall be permanently grounded in accordance with the National Electrical Code.
- Switches: Contractor shall install switches at locations indicated on plan.
- Testing: Contractor is to coordinate a convenient time in the evening to test and aim all equipment to the satisfaction of the Landscape Architect or Owner's agent.
- Guarantee: Upon completion and acceptance of the described work, the Contractor shall provide a guarantee for all workmanship and equipment for the period of one year from the date of acceptance. All warranty service work shall be performed at no cost to Owner and be done in a timely fashion.
- As Built: Contractor will provide Owner with complete and reproducible drawing of the system layout as it was actually installed. This drawing should include the location of underground cable, sleeves and all fixtures and equipment.

FX LUMINAIRE CONTACT: GREG REDLAWSK  
PHONE: 1-888-711-7963  
FAX: 1-858-535-1234  
EMAIL: greg@fxl.com

NOTE:  
ALL LOW VOLTAGE LIGHTINGS SHALL BE ON AN AUTOMATIC TIMER AND  
SHALL BE EXTINGUISHED BETWEEN THE HOURS OF MIDNIGHT AND  
SUNRISE.

NOTE:  
ELECTRICAL METER/ POWER SOURCE IS  
EXISTING, FIELD VERIFY.

NO.	DATE	DESCRIPTION



McCloskey • Peltz, Inc.  
LANDSCAPE ARCHITECTS  
1000 N. Oracle Blvd. Suite 110  
Tomball, TX 77375  
Phone: (281) 358-6888  
Fax: (281) 358-9777



Low Voltage Lighting  
Parkway Improvement District 07-10  
MADERA PARC  
PREPARED FOR: Town of Gilbert

DESIGNED BY: MPI
DRAWN BY: BCD
CHECKED BY: DCM
PROJECT NO: 08422
DATE: 1/2008

DRAWING NO.  
L-18  
SHEET 18 OF 21

PLANTING SPECIFICATIONS

PART 1 - GENERAL

- A. Work Section Includes: The work of this Section shall include all labor, materials, equipment and services necessary to furnish and install all landscape plant materials... B. Submittals: 1. No change from the design shall be made without written authorization from the Owner's Representative & Town of Gilbert... C. Quality Assurance: 1. Plants shall be subject to review and approval of Owner's Representative... D. Installation: 1. Plants shall be installed in accordance with the specifications...

PART 4 - EXECUTION

- A. Grades - Verify that final grades to ± 0.10 foot in elevation have been established prior to commencing landscaping operations... B. General - Irrigation system shall be advanced prior to start of planting... C. Plant Replacement - Remove any existing trees or shrubs not to remain according to the Planting Plans... D. Layout - Verify that the location of all planting areas prior to the start of irrigation system installation... E. Watering - Test coverage of plant beds used prior to filling with water, allow to drain and refill... F. Planting Operations - Remove any rock or other underground obstruction if possible...

PART 5 - LAWN PLANTING AND RESTORATION

- A. General Requirements: 1. Conditions - Conditions causing retention of water in turf areas for more than 24 hours shall be brought to the attention of the Owner's Representative... B. Installation of Seed: 1. Seed may be broadcast by means of a rotary or drop type distributor... C. Watering: 1. The homogeneous mixture shall be applied to the seeding area by means of hydraulic type equipment...

PART 6 - ROCK GROUND COVERWEED CONTROL

- A. Weed Control - The control of all weed control materials shall be licensed by the State of Arizona as a pest control operator... B. Planting Details: 1. Decomposed granite shall be installed in all new planting areas... C. Type of Granite - Decomposed granite shall be size and color per drawings, free from lumps or bits of clay and shall not contain colorants...

PART 7 - CLEANUP, MAINTENANCE, AND GUARANTEE

- A. Cleanup - Keep all areas of the project in a clean neat and orderly condition at all times... B. Maintenance: 1. Continuously maintain all landscape areas included in the contract during the progress of the work... C. Warranty: 1. Provide a uniform stand of grass by watering, mowing, fertilizing, and maintaining lawn areas until final acceptance... D. Plant Loss and Replacement: 1. At an additional cost to the Owner, replace plant material not surviving or in poor condition...

PART 2 - MATERIAL STANDARDS

- A. Barbs or Blades: The following grades, amendments, soil constituents, and fertilizers are for bidding purposes only... B. Organic Soil Amendment: shall be stabilized, fertilized, fortified (nitroized) wood products with no more than one (1) percent after treatment... C. Soil Amendments: 1. Soil Sulfur: Agricultural grade water soluble sulfur containing a minimum of 80% sulfur expressed as elemental Sulfur... D. Commercial Fertilizer: shall be of uniform composition, dry and free-flowing... E. Plant Materials: 1. Plants shall be quality material having the habit and growth which is normal for the species... F. Seed: 1. Lawn Seed shall be fresh, clean, and new crop seed material... G. Soil: 1. Soil shall be tested by a qualified laboratory... H. Sod: 1. Sod shall be Bermuda hybrid Midway (or equivalent) sod... I. Turf: 1. Turf shall be tested by a qualified laboratory... J. Topsoil: 1. Topsoil - Topsoil if required, shall be screened, fertile, friable soil from well-drained grade level...

PART 3 - SOIL PREPARATION

- A. Topsoil - Topsoil if required, shall be screened, fertile, friable soil from well-drained grade level... B. Planting Soil - Plant pit backfill for all trees and shrubs shall be screened, clean on-site native soil... C. Lawn Areas - Where the existing soil is calcareous, it shall be excavated to a depth of 4 inches...

Table with 2 columns: NO. DATE, DESCRIPTION



McCloskey • Peitz, Inc. LANDSCAPE ARCHITECTS



Planning Specifications Parkway Improvement District 07-10 MADERA PARC

DESIGNED BY: MPI DRAWN BY: BCD CHECKED BY: DCM PROJECT NO: 06422 DATE: 1/2008

DRAWING NO. L-19 SHEET 19 OF 21

