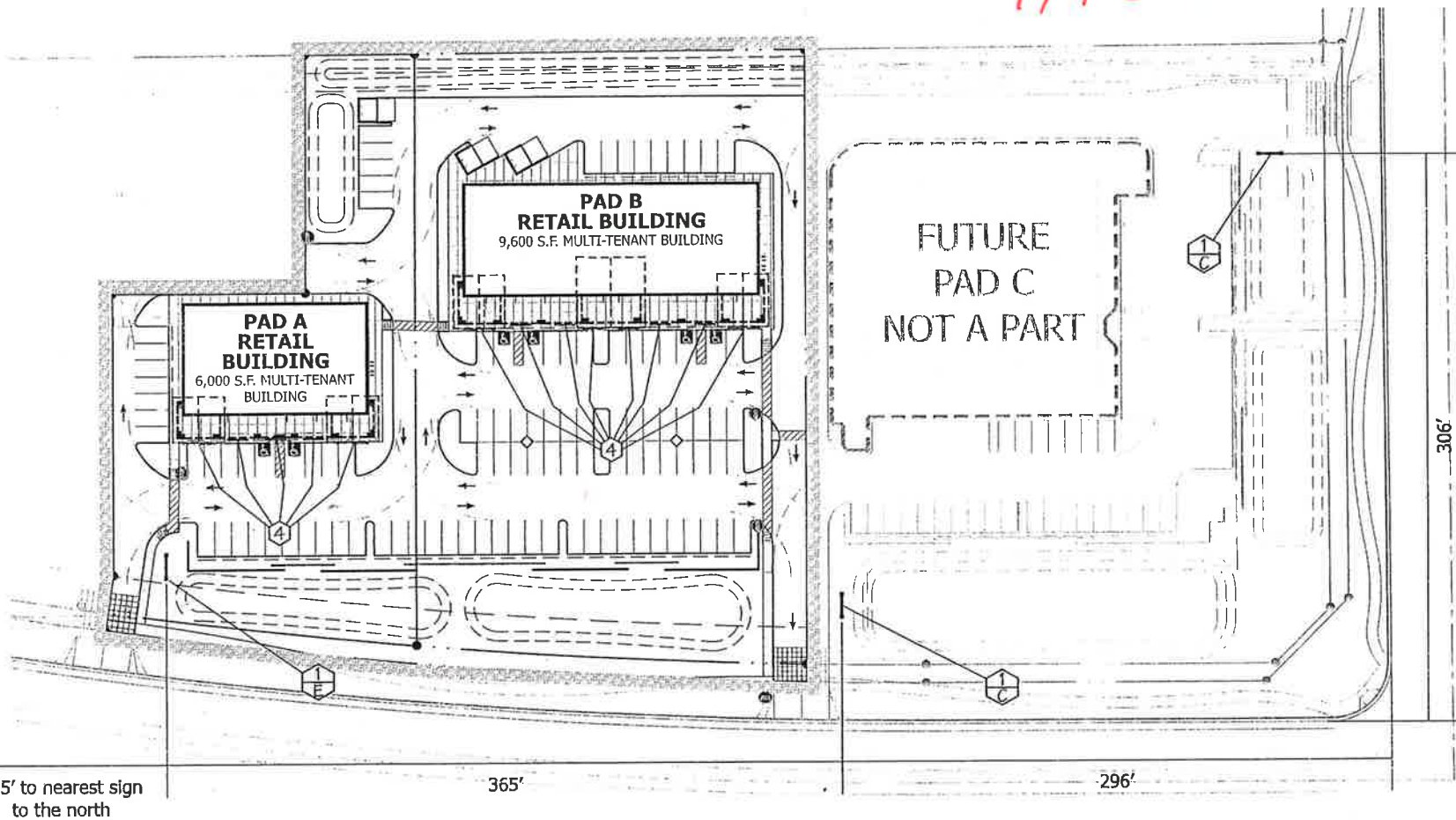


Spectrum Village  
 NEC, ~~Wendy~~  
 Lindsay/Pecos



**SPECTRUM VILLAGE**  
 PECOS ROAD & LINDSAY DRIVE  
 GILBERT, ARIZONA  
**MASTER SIGN PROGRAM**  
 AUGUST 20, 2004

**Glenwright**  
 Development Co.  
 2651 East Rowley  
 Suite E 204  
 Gilbert, Arizona 85234  
 (480) 775-1850

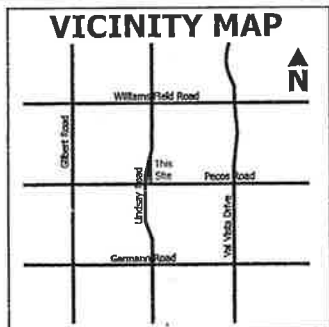
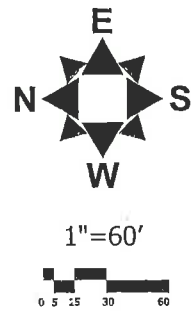
**ECA**  
 Buildings & Cardenas Architects, Inc.  
 Architecture Planning Interiors Interiors  
 1404 N. Pinal Street  
 Gilbert, Arizona 85234  
 (480) 825-8888

**SummitWest Signs**  
 335 E. Baseline Road  
 Gilbert, AZ 85233  
 480.826.3465  
 Sales@summitwestsigns.com

DRAWING:	06/10/04	2.5
REVISION:	08/20/04	.5
REVISION:	-	-
REVISION:	-	-
REVISION:	-	-
REVISION:	-	-
SHOP DWG:-	-	-
SCALE:		
AS NOTED		
DESIGNER:	Brian Hinkle	
SWS SALES REP:	Brian Hinkle	

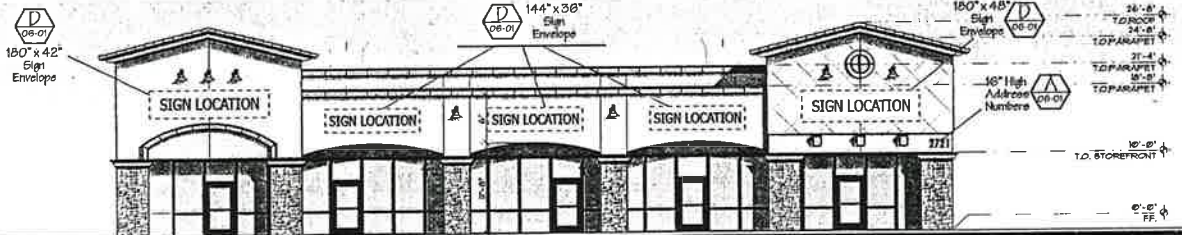
12

- ① GROUND ID MONUMENT SIGN
  - ② Not Used
  - ③ Not Used
  - ④ RETAIL WALL ID SIGN
  - Ⓜ INDICATES LOCATION OF SIGN TYPE 9
  - Ⓢ INDICATES LOCATION OF SIGN TYPE 10
- SIGN TYPE  
 ---LAYOUT TYPE (Page 01-01)



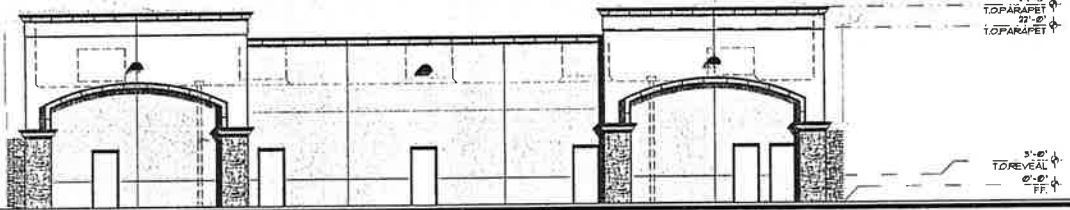
All specified details on these drawings are subject to change due to the availability of materials and/or changes in the method of fabrication. Sign Contractor will do their best to maintain the design intent of these drawings at all times. If the owner or owner's representative wishes to receive detail drawings on any or all changes during the fabrication process, SummitWest Signs must be advised in writing prior to the start of fabrication.

**SIGN TYPE 4 PLAZA TENANT IDENTIFICATION WALL SIGNS**



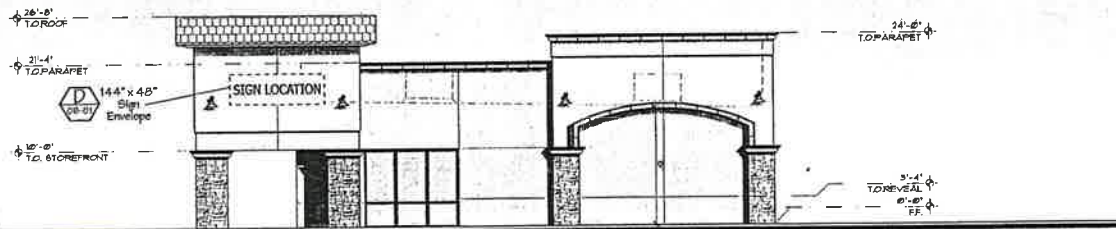
**PAD A - WEST ELEVATION**

Scale: 1" = 16'-0"



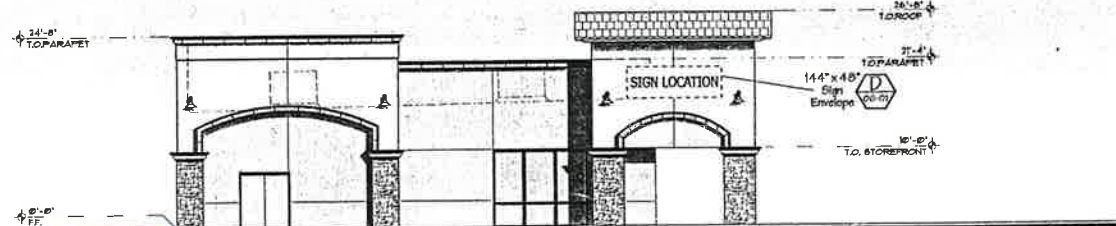
**PAD A - EAST ELEVATION**

Scale: 1" = 16'-0"



**PAD A - SOUTH ELEVATION**

Scale: 1" = 16'-0"



**PAD A - NORTH ELEVATION**

Scale: 1" = 16'-0"

**SIGN TYPE 4**

Retail Sign Area not to exceed 2 sq. ft. of sign per 1 linear ft. of frontage

Sign construction types permitted as noted on elevation:

-  Style A\* - Non-Illuminated Flat Cut out HDU Letters
-  Style B\* - Non Illuminated Revers Pan Channel Letters
-  Style C\* - Halo Illuminated Reverse Pan Channel Letters

 Style D\* - Face Illuminated Channel Letters

\*See Sheet 06-01 for specification drawings.

Represents Maximum Sign Envelope. No part of sign is to extend beyond this envelope area. \*NOTE: Sign envelope does not constitute the size of sign allowed. Square Footage/Linear Footage rule still applies. Sign envelope is provided for the purpose of defining the outer most boundaries for a sign location.

DRAWING:	06/10/04	2.5
REVISION:	08/20/04	.5
REVISION:	-	-
REVISION:	-	-
REVISION:	-	-
REVISION:	-	-
SHOP DWG:-		
SCALE:		
AS NOTED		
DESIGNER:	Brian Hinkle	
SWS SALES REP:	Brian Hinkle	

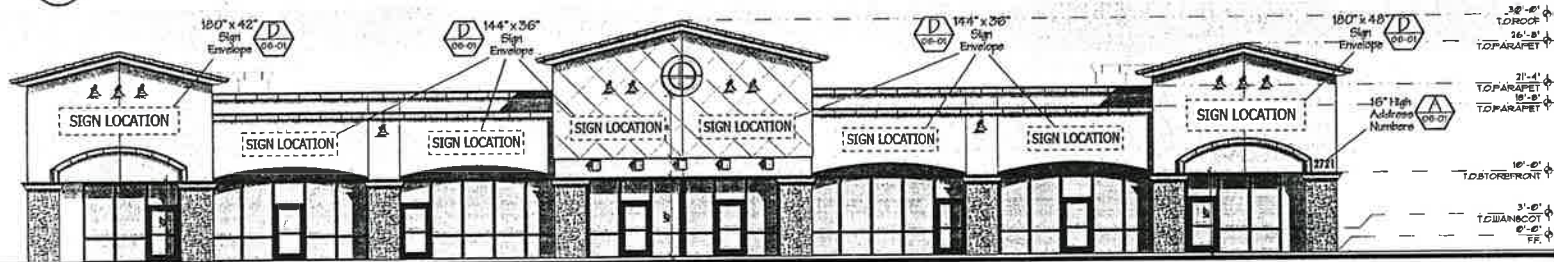
All specified details on these drawings are subject to change due to the availability of material and/or changes in the method of fabrication. Sign Contractor will c their best to maintain the design Intent of these drawings at all times. If the owner or owner's representative wishes to receive detail drawings on any or all changes during the fabrication process, SummitWest Signs must be advised in writing prior to the start of fabrication.

24



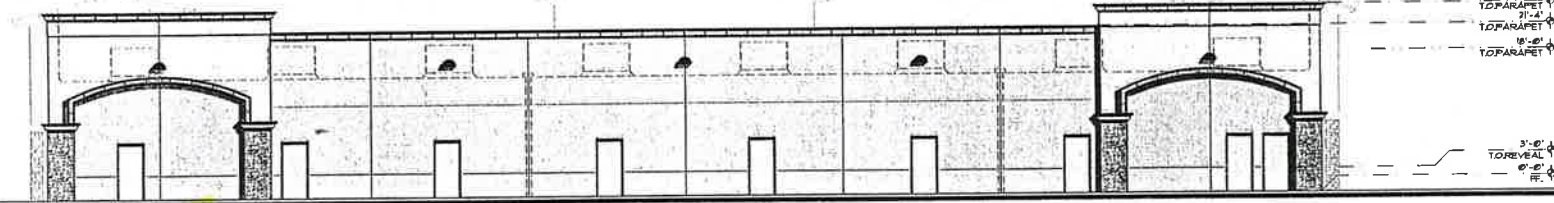


**SIGN TYPE 4 PLAZA TENANT IDENTIFICATION WALL SIGNS**



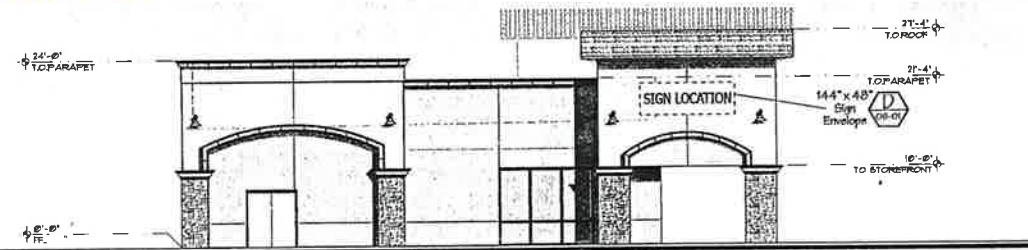
**PAD B - WEST ELEVATION**

Scale: 1" = 16'-0"



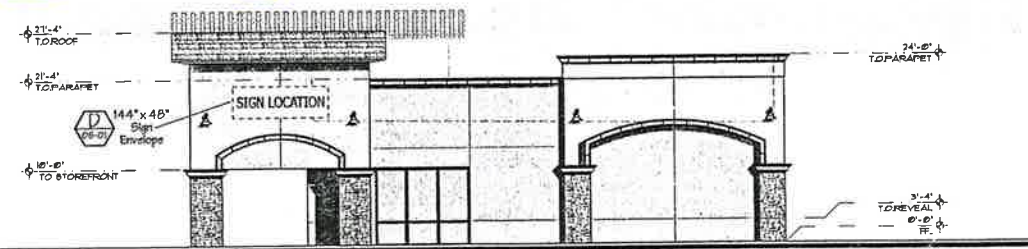
**PAD B - EAST ELEVATION**

Scale: 1" = 16'-0"



**PAD B - NORTH ELEVATION**

Scale: 1" = 16'-0"



**PAD B - SOUTH ELEVATION**

Scale: 1" = 16'-0"

**SIGN TYPE 4**

Retail Sign Area not to exceed 2 sq. ft. of sign per 1 linear ft. of frontage

Sign construction types permitted as noted on elevation:



Style A\* - Non-Illuminated Flat Cut out HDU Letters



Style B\* - Non Illuminated Reverse Pan Channel Letters



Style C\* - Halo Illuminated Reverse Pan Channel Letters



Style D\* - Face Illuminated Channel Letters

\*See Sheet 06-01 for specification drawings.

Represents Maximum Sign Envelope.

No part of sign is to extend beyond this envelope area. NOTE: Sign envelope does not constitute the size of sign allowed. Square footage/Linear footage rule still applies. Sign envelope is provided for the purpose of defining the outer most boundaries for a sign location.

DRAWING:	06/10/04	2.5
REVISION:	08/20/04	.5
REVISION:	-	-
REVISION:	-	-
REVISION:	-	-
REVISION:	-	-
SHOP DWG:-	-	-
SCALE:	As Noted	
DESIGNER:	Brian Hinkle	
SWS SALES REP:	Brian Hinkle	

All specified details on these drawings are subject to change due to the availability of materials and/or changes in the method of fabrication. Sign Contractor will do their best to maintain the design intent of these drawings at all times. If the owner or owner's representative wishes to receive detail drawings on any or all changes during the fabrication process, SummitWest Signs must be advised in writing prior to the start of fabrication.

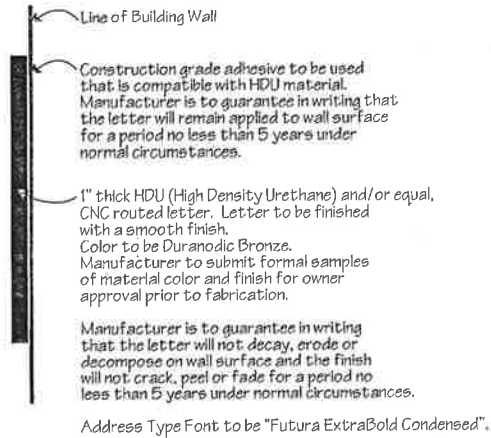
25



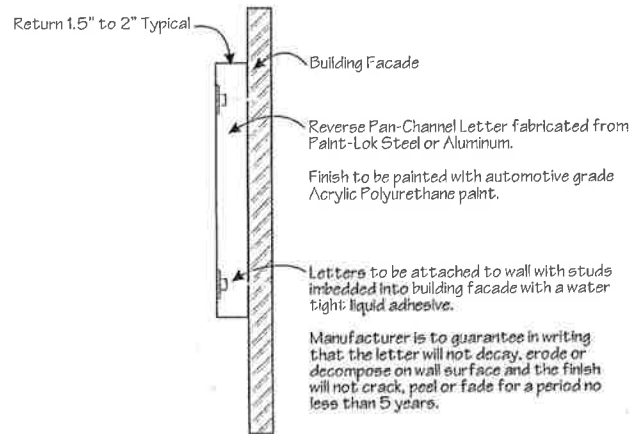




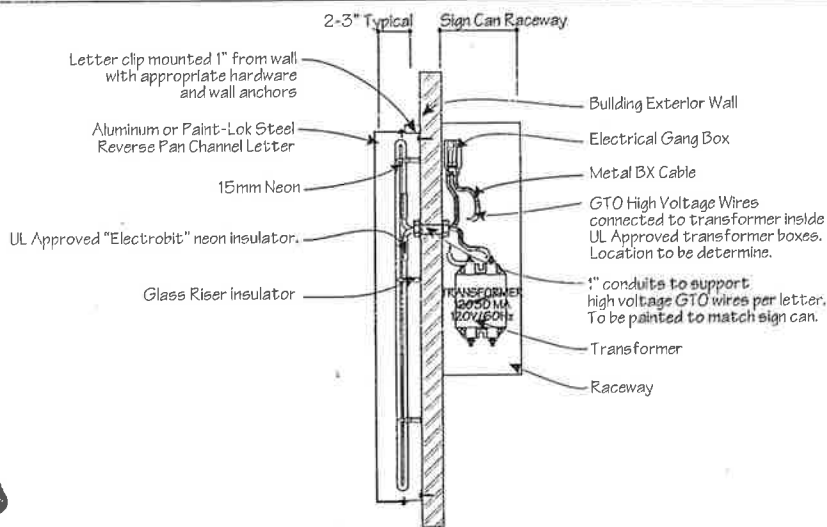
WALL SIGN TYPICALS



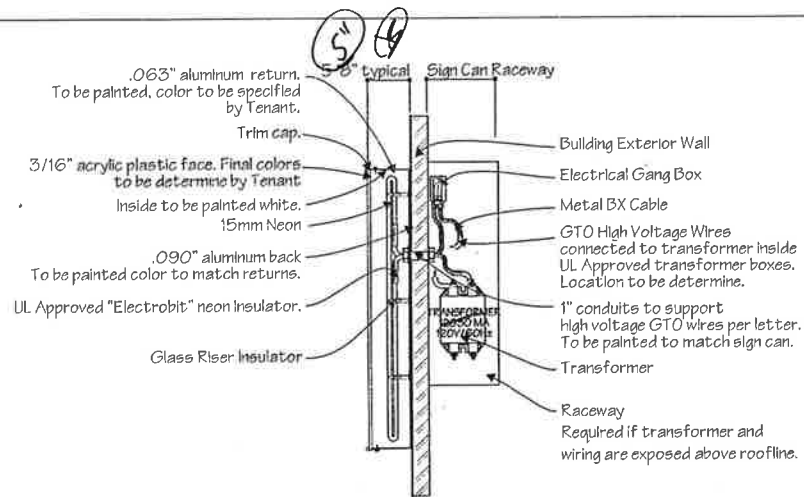
**A** FLAT CUT OUT HDU LETTER - SECTION DETAIL  
Scale: 1/8" = 1"



**B** NON-ILLUMINATED REVERSE PAN CHANNEL LETTER - SECTION DETAIL  
Scale: 1/8" = 1"



**C** HALO-ILLUMINATED REVERSE PAN CHANNEL LETTER - SECTION DETAIL  
Scale: 1/8" = 1"



**D** FACE ILLUMINATED CHANNEL LETTER - SECTION DETAIL  
Scale: 1/16" = 1"

**SPECTRUM VILLAGE**  
PECOS ROAD & LINDSAY DRIVE  
GILBERT, ARIZONA

**MASTER SIGN PROGRAM**  
AUGUST 20, 2004

**Gleny Development Co.**  
3051 East Broadway  
Gilbert, Arizona 85234  
(480) 772-4800

**BEA**  
Builders & Crafters Association, Inc.  
Architectural Working Methods & Detail Standards  
Professional Services Division  
1000 West McDowell Road, Suite 200  
Phoenix, Arizona 85007  
Tel: 602.998.6666 Fax: 602.998.6667

**SummitWest SIGNS**  
335 E. Baseline Road  
Gilbert, AZ 85233  
480.928.3465  
Sales@summitwestsigns.com

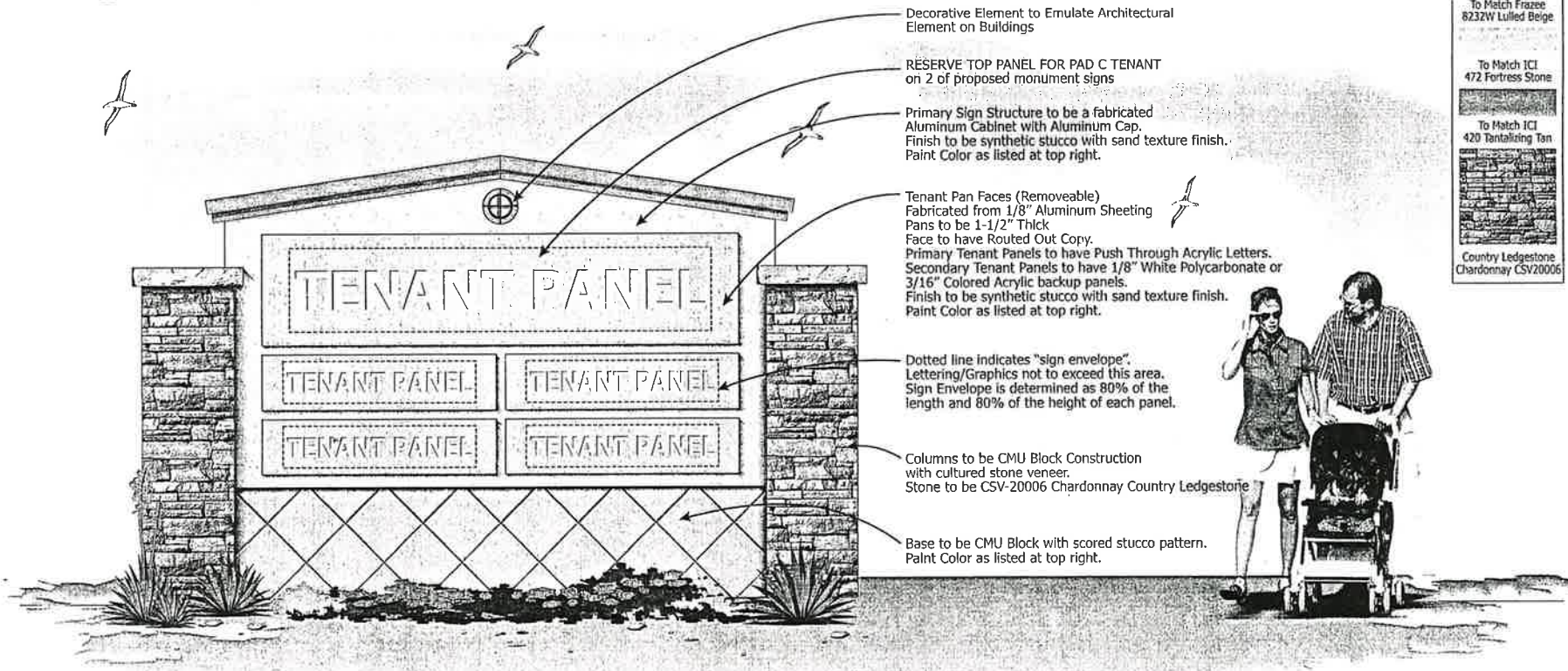
DRAWING:	06/10/04	2.5
REVISION:	-	-
REVISION:	-	-
REVISION:	-	-
REVISION:	-	-
REVISION:	-	-
SHOP DWG:-	-	-
SCALE:	As Noted	
DESIGNER:	Brian Hinkle	
SWS SALES REP:	SWS Sales Rep: Brian Hinkle	

All specified details on these drawings are subject to change due to the availability of materials and/or changes in the method of fabrication. Sign Contractor will do their best to maintain the design intent of these drawings at all times. If the owner or owner's representative wishes to receive detail drawings on any or all changes during the fabrication process, SummitWest Signs must be advised in writing prior to the start of fabrication.

27



**DESIGN TYPE 1 GROUND ID MONUMENT SIGN**



- Decorative Element to Emulate Architectural Element on Buildings
- RESERVE TOP PANEL FOR PAD C TENANT on 2 of proposed monument signs
- Primary Sign Structure to be a fabricated Aluminum Cabinet with Aluminum Cap. Finish to be synthetic stucco with sand texture finish. Paint Color as listed at top right.
- Tenant Pan Faces (Removeable) Fabricated from 1/8" Aluminum Sheeting. Pans to be 1-1/2" Thick. Face to have Routed Out Copy. Primary Tenant Panels to have Push Through Acrylic Letters. Secondary Tenant Panels to have 1/8" White Polycarbonate or 3/16" Colored Acrylic backup panels. Finish to be synthetic stucco with sand texture finish. Paint Color as listed at top right.
- Dotted line indicates "sign envelope". Lettering/Graphics not to exceed this area. Sign Envelope is determined as 80% of the length and 80% of the height of each panel.
- Columns to be CMU Block Construction with cultured stone veneer. Stone to be CSV-20006 Chardonnay Country LedgeStone
- Base to be CMU Block with scored stucco pattern. Paint Color as listed at top right.

**COLORS**

- To Match Frazee 8232W Lulled Beige
- To Match ICI 472 Fortress Stone
- To Match ICI 420 Tantalizing Tan
- Country LedgeStone Chardonnay CSV20006

**SPECTRUM VILLAGE**  
 PECOS ROAD & LINDSAY DRIVE  
 GILBERT, ARIZONA

**MASTER SIGN PROGRAM**  
 AUGUST 20, 2004

**Glenwood**  
 Development Co.  
 3851 East Baseline  
 Suite E 204  
 Gilbert, Arizona 85233  
 (480) 775-8520

**Summit West SIGNS**  
 335 E. Baseline Road  
 Gilbert, AZ 85233  
 480.926.3465  
 Sales@summitwestsigns.com

DRAWING:	06/10/04	2.5
REVISION:	08/20/04	.5
REVISION:	-	-
REVISION:	-	-
REVISION:	-	-
REVISION:	-	-
SHOP DWG:-	-	-
SCALE:	As Noted	
DESIGNER:	Brian Hinkle	
SWS SALES REP:	Brian Hinkle	

GROUND ID MONUMENT SIGN (2 sided) - Face Elevation  
 Scale: 1" = 24"

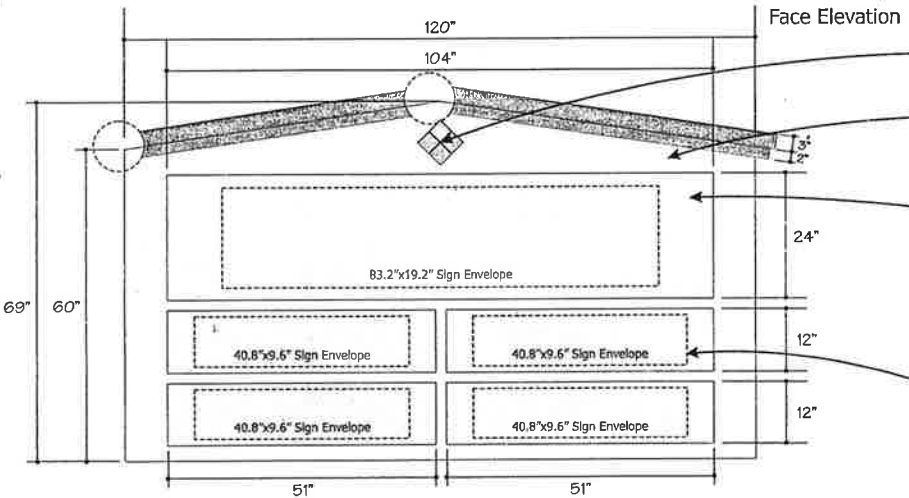
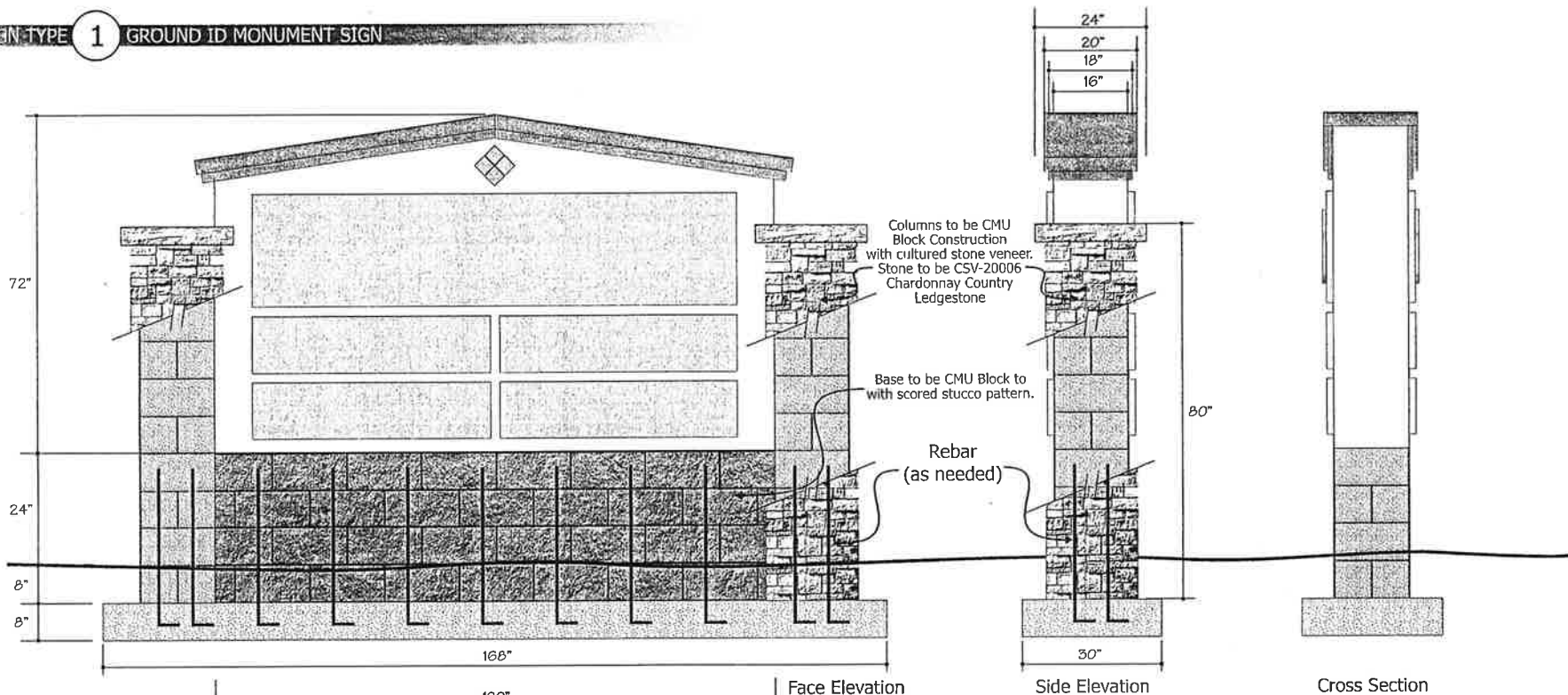


POTENTIAL TENANT PANEL CONFIGURATIONS  
 Scale: NTS

All specified details on these drawings are subject to change due to the availability of material and/or changes in the method of fabrication. Sign Contractor will do their best to maintain the design intent of these drawings at all times. If the owner or owner's representative wishes to receive detail drawings on any or all changes during the fabrication process, SummitWest Signs must be advised in writing prior to the start of fabrication.



**SIGN TYPE 1 GROUND ID MONUMENT SIGN**



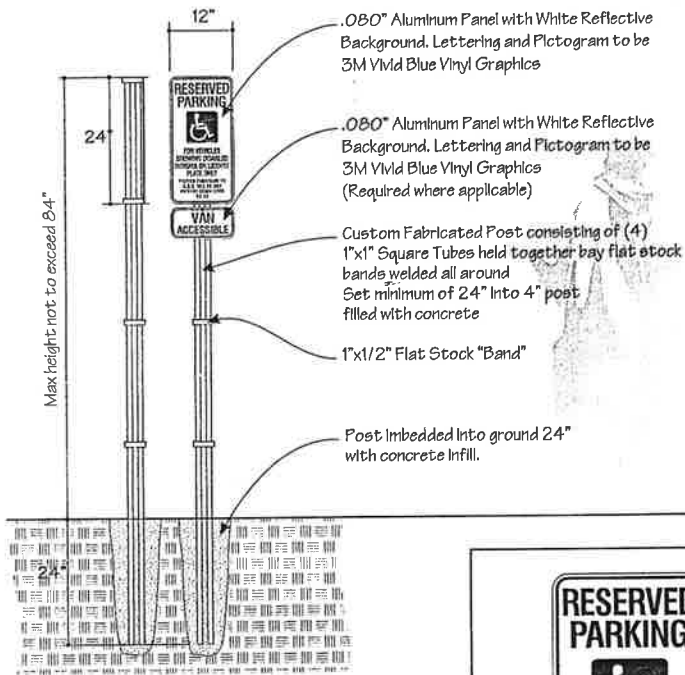
- Decorative Element to Emulate Architectural Element on Buildings
- Aluminum Cabinet with Aluminum Cap. Finish to be synthetic stucco with sand texture finish.
- Tenant Pan Faces (Removeable) Fabricated from 1/8" Aluminum Sheeting. Pans to be 1-1/2" Thick. Face to have Routed Out Copy. Primary Tenant Panels to have Push Through Acrylic Letters. Secondary Tenant Panels to have 1/8" Acrylic Backup Panel. Finish to be synthetic stucco with sand texture finish.
- Dotted line indicates "sign envelope". Lettering/Graphics not to exceed this area. Sign Envelope is determined as 80% of the length and 80% of the height of each panel.

DRAWING:	06/10/04	2.5
REVISION:	-	-
REVISION:	-	-
REVISION:	-	-
REVISION:	-	-
REVISION:	-	-
REVISION:	-	-
SHOP DWG:	-	-
SCALE:	As Noted	
DESIGNER:	Brian Hinkle	
SWS SALES REP:	Brian Hinkle	

All specified details on these drawings are subject to change due to the availability of materials and/or changes in the method of fabrication. Sign Contractor will do their best to maintain the design intent of these drawings at all times. If the owner or owner's representative wishes to receive detail drawings on any or all changes during the fabrication process, SummitWest Signs must be advised in writing prior to the start of fabrication.

23

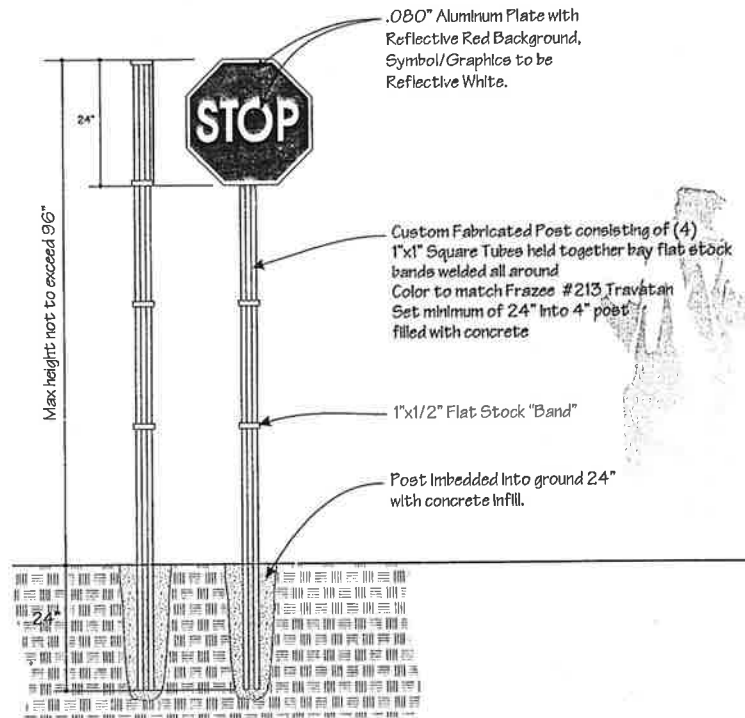
SIGN TYPE 5 PARKING REGULATORY SIGNS



SIGN TYPE: 10 HANDICAPPED PARKING  
Scale: 1/2" = 1'0"



SIGN TYPE 6 TRAFFIC CONTROL SIGNS



SIGN TYPE: 11 STOP  
Scale: 1/2" = 1'0"

**COLORS**

White Reflective Vinyl Background

Vivid Blue Vinyl or Screenprinted Lettering

Transparent Red Vinyl or Screenprinted Bkgd.

To Match ICI 472 Fortress Stone

**SPECTRUM VILLAGE**  
PECOS ROAD & LINDSAY DRIVE  
GILBERT, ARIZONA

**MASTER SIGN PROGRAM**  
AUGUST 20, 2004

**Glenw...**  
Development Co  
2004 East Dunbar  
Gilbert, Arizona 85234  
(480) 775-4500

**BCA**  
Building & Construction Associates, Inc.  
Architectural Planning, Interior Design, Project Management  
1000 North Central Expressway, Suite 1000  
Gilbert, Arizona 85234  
Tel: (480) 825-8875 Fax: (480) 825-8877

**SummitWest SIGNS**  
335 E. Baseline Road  
Gilbert, AZ 85233  
480.926.3465  
Sales@summitwestsigns.com

DRAWING:	06/10/04	.5
REVISION:	-	-
REVISION:	-	-
REVISION:	-	-
REVISION:	-	-
REVISION:	-	-
REVISION:	-	-
SHOP DWG.:	-	-
SCALE:	As Noted	
DESIGNER:	Brian Hinkle	
SWS SALES REP:	Brian Hinkle	

All specified details on these drawings are subject to change due to the availability of materials and/or changes in the method of fabrication. Sign Contractor will do their best to maintain the design intent of these drawings at all times. If the owner or owner's representative wishes to receive detail drawings on any or all changes during the fabrication process, SummitWest Signs must be advised in writing prior to the start of fabrication.

92