

Client:  
Higley Park  
Professional Village

Location:  
Higley & Ray  
Gilbert, AZ



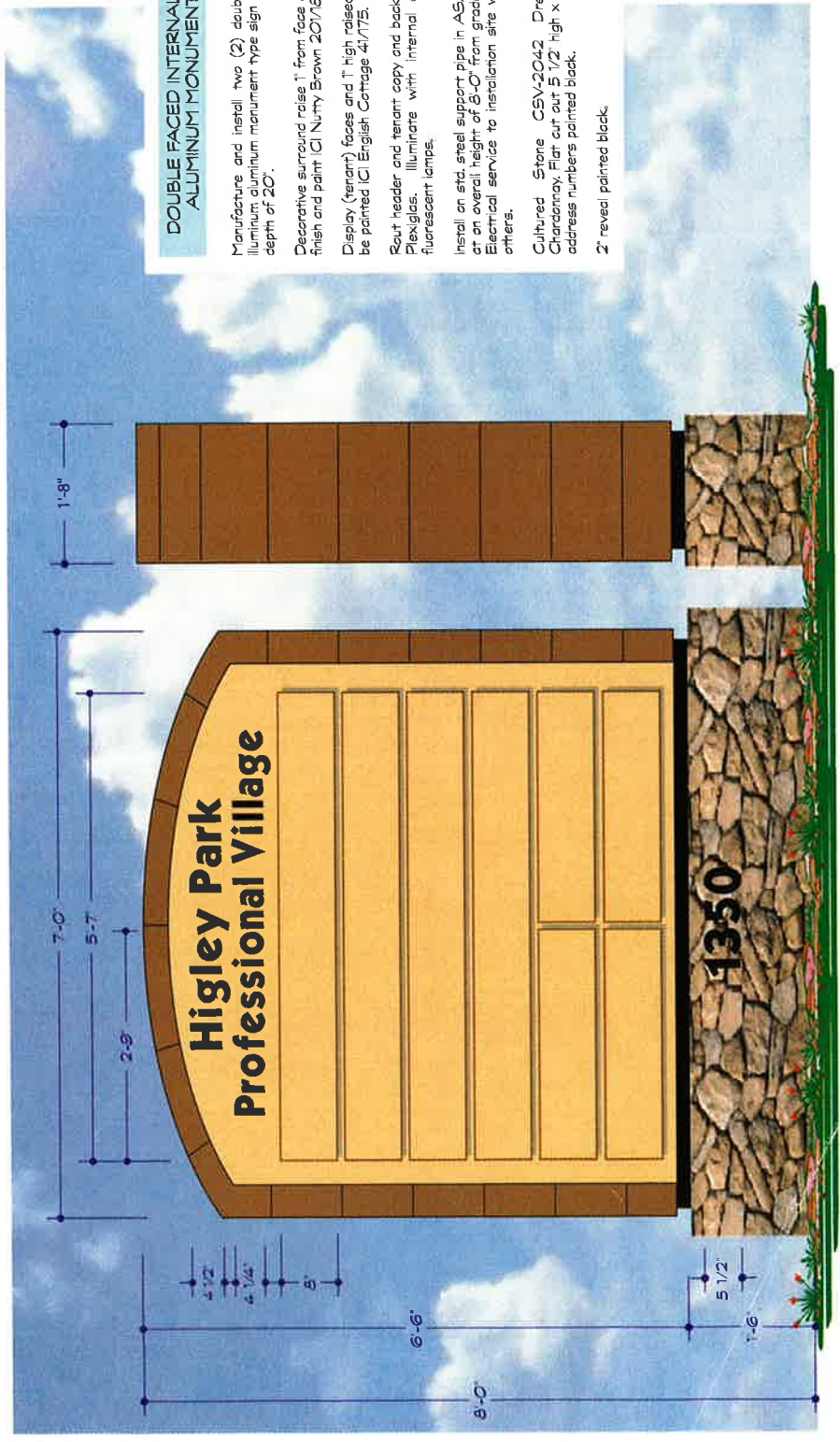
2631 N. 31st Ave.  
Phoenix, AZ 85009  
602-278-5285  
fax: 602-278-0234  
E-mail (Art Dept):  
royal@totalco.com

- Client: Higley Park
- Designer: Dennis Martin
- Date: 05/11/11
- Project: Professional Village
- Location: Higley & Ray, Gilbert, AZ
- Scale: 3/4" = 1'-0"
- Drawn By: L. Hart
- Check: K. L. ...
- Approved: K. L. ...
- Scale: 3/4" = 1'-0"
- Drawn By: L. Hart
- Check: K. L. ...
- Approved: K. L. ...

Scale: 3/4" = 1'-0"  
Location: A  
Drawn By: L. Hart

05-0157

DR05-11 (1st)



**DOUBLE FACED INTERNALLY ILLUM. ALUMINUM MONUMENT SIGNS**

Manufacture and install two (2) double faced internally illuminated aluminum monument type sign display with a filler depth of 2'-0".

Decorative surround raise 1" from face of display. Montex finish and paintICI Nummy Brown 201765.

Display (tenant) faces and T high raised tenant panels will be paintedICI English Cottage 417175.

Rout header and tenant copy and back with Black/White Plexiglas. Illuminate with internal 800ma CW/HO fluorescent lamps.

Install on std. steel support pipe in ASA concrete footing at an overall height of 8'-0" from grade to top of display. Electrical service to installation site will be provided by others.

Cultured Stone GEN-2042 Dressed Feldstone Charonmay. Flat cut out 5 1/2" high x 1 1/4" thick aluminum address numbers painted black.

2" reveal painted black.

A

Scale:  
3/4" = 1'-0"

*Higley Park*



RECEIVED  
FEB 24 2005  
COMMUNITY DEVELOPMENT  
TOWN OF GILBERT

PLANNING AND ZONING DEPARTMENT  
LETTER OF TRANSMITTAL

DATE: 2-24-05

ATTN: Joseph Moon

SUBJECT: Hrgley Park Professional Village

SENT BY: Dennis Martin 602-278-6286

ITEMS ARE TRANSMITTED AS CHECKED BELOW:

- For approval
- For your use
- As requested
- For review and comment
- Resubmit      copies for approval

REMARKS:

Attached are the revised drawings for  
an D.R. submittal for Bldg # 6410  
with a limit of 18" o.a. on the Bldg 4hrs

Client:  
Higley Park  
Professional Village

Location:  
Higley & Ray  
Gibson, AZ



2831 N. 31st Ave.  
Phoenix, AZ 85008  
602.278.6286  
royaleign.com  
Email: ART Dept@royaleign.net  
royaleign@royaleign.net

DATE: 11/11/11

Owner: **Raymond Martin**

Architect: **royaleign.net**

Contractor: **Raymond Martin**

Construction: **20 JAN 05**

Contractor: **L. Hart**

Contractor: **Raymond Martin**

Contractor: **Raymond Martin**

Contractor: **Raymond Martin**

Contractor: **Raymond Martin**

Contractor: **Raymond Martin**

Contractor: **Raymond Martin**

Contractor: **Raymond Martin**

Contractor: **Raymond Martin**

Contractor: **Raymond Martin**

Contractor: **Raymond Martin**

Contractor: **Raymond Martin**

Contractor: **Raymond Martin**

Contractor: **Raymond Martin**

Contractor: **Raymond Martin**

Contractor: **Raymond Martin**

Contractor: **Raymond Martin**

Contractor: **Raymond Martin**

Contractor: **Raymond Martin**

Contractor: **Raymond Martin**

Contractor: **Raymond Martin**

Contractor: **Raymond Martin**

Contractor: **Raymond Martin**

Contractor: **Raymond Martin**

Contractor: **Raymond Martin**

Contractor: **Raymond Martin**

Contractor: **Raymond Martin**

Contractor: **Raymond Martin**

Contractor: **Raymond Martin**

Contractor: **Raymond Martin**

Contractor: **Raymond Martin**

Contractor: **Raymond Martin**

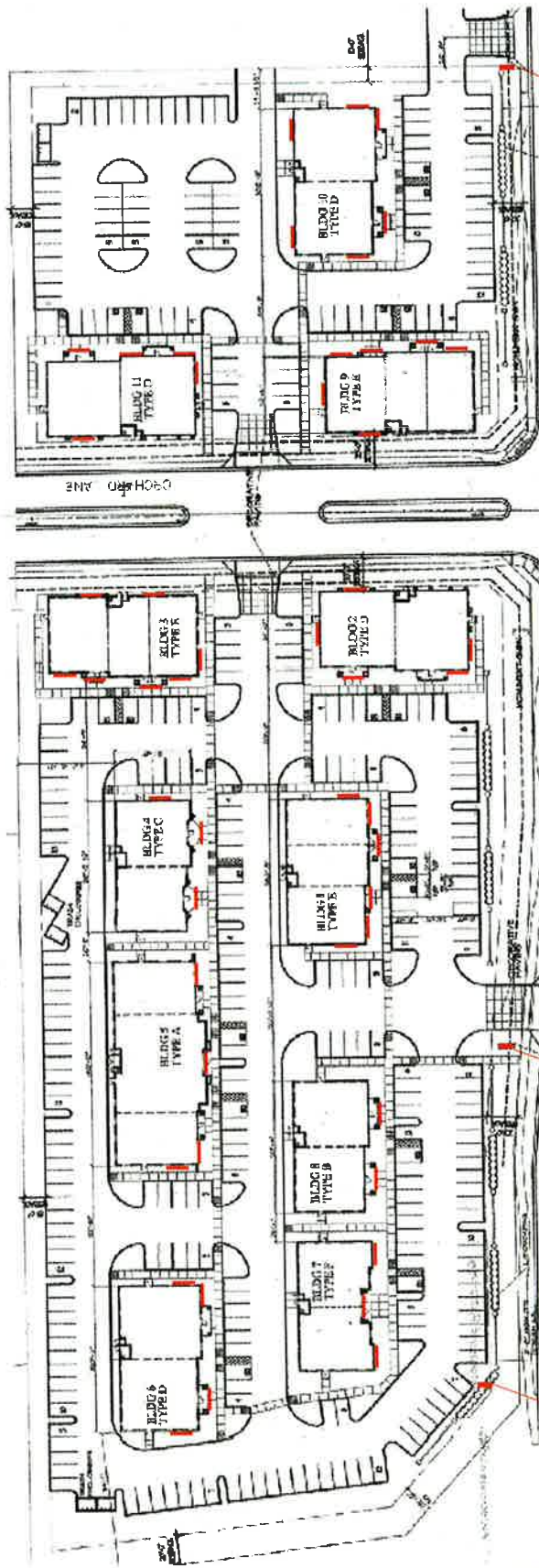
Contractor: **Raymond Martin**

Contractor: **Raymond Martin**

Contractor: **Raymond Martin**

Contractor: **Raymond Martin**

← Z



**B** Monument sign  
3'-0" behind P/L

**A** Monument sign  
3'-0" behind P/L

**A** Monument sign  
3'-0" behind P/L

HIGLEY ROAD

515'

50'

Sheet Title

Location

Scale:  
1/2" = 1'-0"

Drawing Number

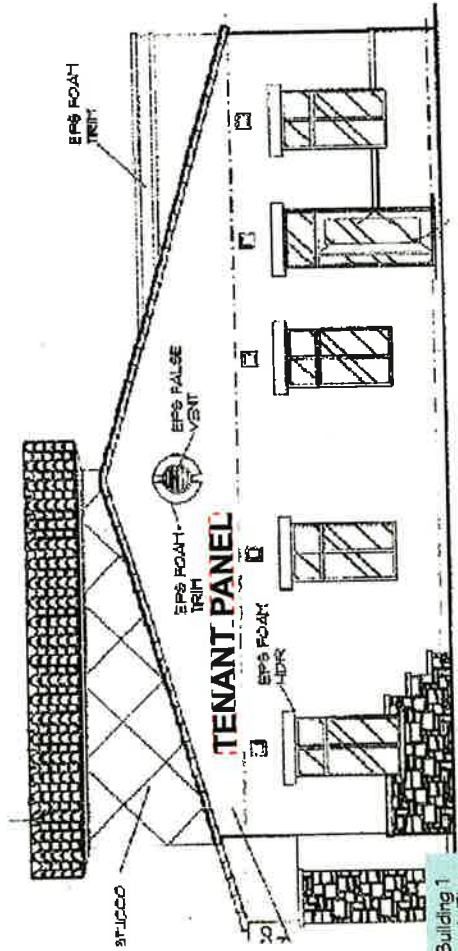
05-0153



# TENANT PANEL

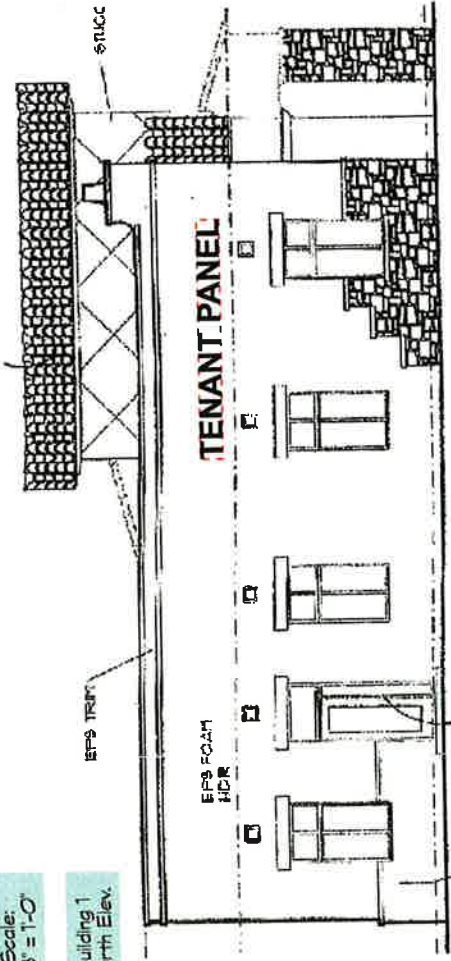
16'-0"

1'-6"



Building 1  
South Elev.

Scale:  
1/8" = 1'-0"



Building 1  
North Elev.

## REVERSE PAN CHANNEL ALUMINUM LETTERS

Scale:  
1/2" = 1'-0"

Fabricate & install R.P.C. non-illuminated T deep aluminum letters painted MAP Black Anodic 41-335.



Fabricate & install R.P.C. halo-illuminated letters with 3" deep returns & 6500 white 30ma neon, allowed with Town of Gilbert & landlord approval.



Scale:  
1/16" = 1'-0"



Client:  
Higley Park  
Professional Village

Location:  
Higley & Ray  
Gilbert, AZ



2831 N. 31st Ave.  
Phoenix, AZ 85009  
602-278-8288  
444  
Email (Alt Dept):  
royalrgbco@royalrgbco.net

royalrgbco.net

Sales Representative:  
Dimitrie Martin

Est. #201

Estimate #royalrgbco.net

Drawing or Revision Date:  
27 SEPT 04

Drawn By:  
L. Hart

Checked By:

Drawn By:  
Kase

Approved By:

Checked By:

Drawn By:

Checked By:

Drawn By:

Checked By:

Drawn By:

Checked By:

Drawn By:

Checked By:

Drawn By:

Checked By:

Drawn By:

Checked By:

Drawn By:

Checked By:

Drawn By:

Checked By:

Drawn By:

Checked By:

Drawn By:

Checked By:

Drawn By:

Checked By:

Drawn By:

Checked By:

Drawn By:

Checked By:

Drawn By:

Checked By:

Drawn By:

Checked By:

Drawn By:

Checked By:

Drawn By:

Checked By:

Drawn By:

Checked By:

Drawn By:

Checked By:

Drawn By:

Checked By:

Drawn By:

Checked By:

Drawn By:

Checked By:

Drawn By:

Checked By:

Drawn By:

Checked By:

Drawn By:

Checked By:

Drawn By:

Checked By:

Drawn By:

Checked By:

Drawn By:

Checked By:

Drawn By:

Checked By:

Drawn By:

Checked By:

Drawn By:

Checked By:

Drawn By:

Checked By:

Drawn By:

Checked By:

Drawn By:

Checked By:

Drawn By:

Checked By:

Drawn By:

Checked By:

Drawn By:

Checked By:

Drawn By:

Checked By:

Drawn By:

Checked By:

Drawn By:

Checked By:

Drawn By:

Checked By:

Drawn By:

Checked By:

Drawn By:

Checked By:

Drawn By:

Checked By:

Drawn By:

Checked By:

Drawn By:

Checked By:

Drawn By:

Checked By:

Drawn By:

Checked By:

Drawn By:

Checked By:

Drawn By:

Checked By:

Drawn By:

Checked By:

Drawn By:

Checked By:

Drawn By:

Checked By:

Drawn By:

Checked By:

Drawn By:

Checked By:

Drawn By:

Checked By:

Drawn By:

Checked By:

Drawn By:

Checked By:

Drawn By:

Checked By:

Drawn By:

Checked By:

Drawn By:

Checked By:

Drawn By:

Checked By:

Drawn By:

Checked By:

Drawn By:

Checked By:

Drawn By:

Checked By:

Drawn By:

Checked By:

Drawn By:

Checked By:

Drawn By:

Checked By:

Drawn By:

Checked By:

Drawn By:

Checked By:

Drawn By:

Checked By:

Drawn By:

Checked By:

Drawn By:

Checked By:

Drawn By:

Checked By:

Drawn By:

Checked By:

Drawn By:

Checked By:

Drawn By:

Checked By:

Drawn By:

Checked By:

Drawn By:

Checked By:

Drawn By:

Checked By:

Drawn By:

Checked By:

Drawn By:

Checked By:

Drawn By:

Checked By:

Drawn By:

Checked By:

Drawn By:

Checked By:

Drawn By:

Checked By:

Drawn By:

Checked By:

Drawn By:

Checked By:

Drawn By:

Checked By:

Drawn By:

Checked By:

Drawn By:

Checked By:

Drawn By:

Checked By:

Drawn By:

Checked By:

Drawn By:

Checked By:

Drawn By:

Checked By:

Drawn By:

Checked By:

Drawn By:

Checked By:

Drawn By:

Checked By:

Drawn By:

Checked By:

Drawn By:

Checked By:

Drawn By:

Checked By:

Drawn By:

Checked By:

Drawn By:

Checked By:

Drawn By:

Checked By:

Drawn By:

Checked By:

Drawn By:

Checked By:

Drawn By:

Checked By:

Drawn By:

Checked By:

Drawn By:

Checked By:

Drawn By:

Checked By:

Drawn By:

Checked By:

Drawn By:

Checked By:

Drawn By:

Checked By:

Drawn By:

Checked By:

Drawn By:

Checked By:

Drawn By:

Checked By:

Drawn By:

Checked By:

Drawn By:

Checked By:

Drawn By:

Checked By:

Drawn By:

Checked By:

Drawn By:

Checked By:

Drawn By:

Checked By:

Drawn By:

Checked By:

Drawn By:

Checked By:

Drawn By:

Checked By:

Drawn By:

Checked By:

Drawn By:

Checked By:

Drawn By:

Checked By:

Drawn By:

Checked By:

Drawn By:

Checked By:

Drawn By:

Checked By:

Drawn By:

Checked By:

Drawn By:

Client:  
High Park  
Professional Village

Location:  
Highway 82  
Gilbert, AZ

**royalblue**  
2831 N. 31st Ave.  
Phoenix, AZ 85008  
602-978-4288  
www.royalblue.com  
Email: (AZ Dept):  
royalblue@royalblue.net

- Scale Representative: Demille Martin
- Client: demille@royalblue.net
- Drawing or Revision Date: 27 SEPT 04
- Drawn By: L. Hart
- Revised By:
- Contract Name: Model
- Approved By:
- Checked By:
- Scale:
- Project:

ROYALBLUE  
2831 N. 31st Ave.  
Phoenix, AZ 85008  
602-978-4288  
www.royalblue.com  
Email: (AZ Dept):  
royalblue@royalblue.net

Sheet Title  
Location

Scale:  
1/2" = 1'-0"  
Drawing Number

**04-1838**

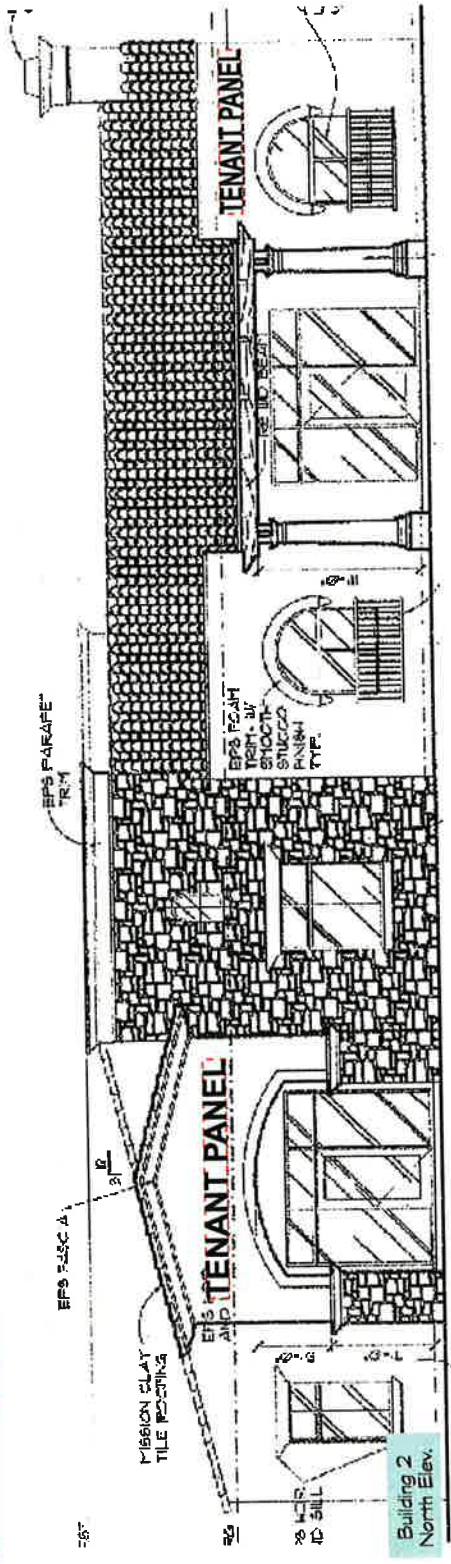
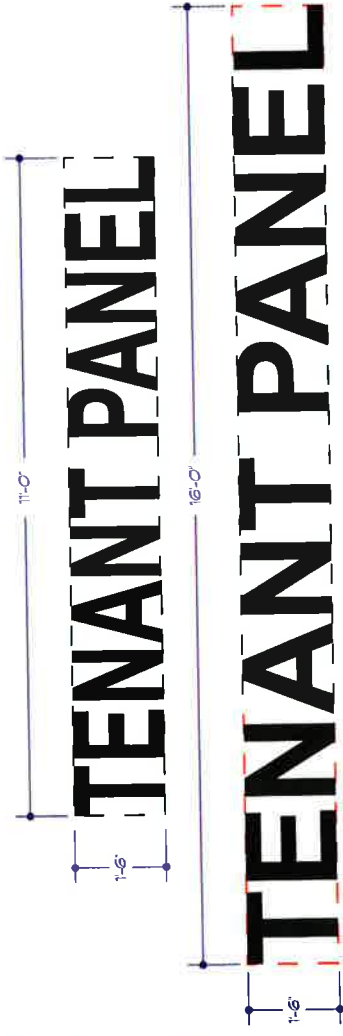
**REVERSE PAN CHANNEL ALUMINUM LETTERS**

Scale: 1/2" = 1'-0"

Fabricate & install R.P.C. non-illuminated T deep aluminum letters painted MIP Black Anodic 41-355.



Fabricate & install R.P.C. halo-illuminated letters with 3" deep returns & 6500 white 30ma neon, allowed with Town of Gilbert & landlord approval.



Scale: 1/8" = 1'-0"



Scale: 1/16" = 1'-0"



Client:  
Highley Park  
Professional Village

Location:  
Highley & Ray  
Gilbert, AZ



2831 N. 31st Ave.  
Phoenix, AZ 85009  
602-276-8888  
1st Floor  
royalalign@royalalign.net

- Sales Representative: Dennis Martin
- EMail: dennis@royalalign.net
- Drawing or Revision Date: 27 SEPT 04
- Drawn By: L. Hart
- Reviewed By: [Redacted]
- Form Used: Kachel

- Approved Signature: [Redacted]
- Checked: [Redacted]
- Designed: [Redacted]
- Scale: [Redacted]

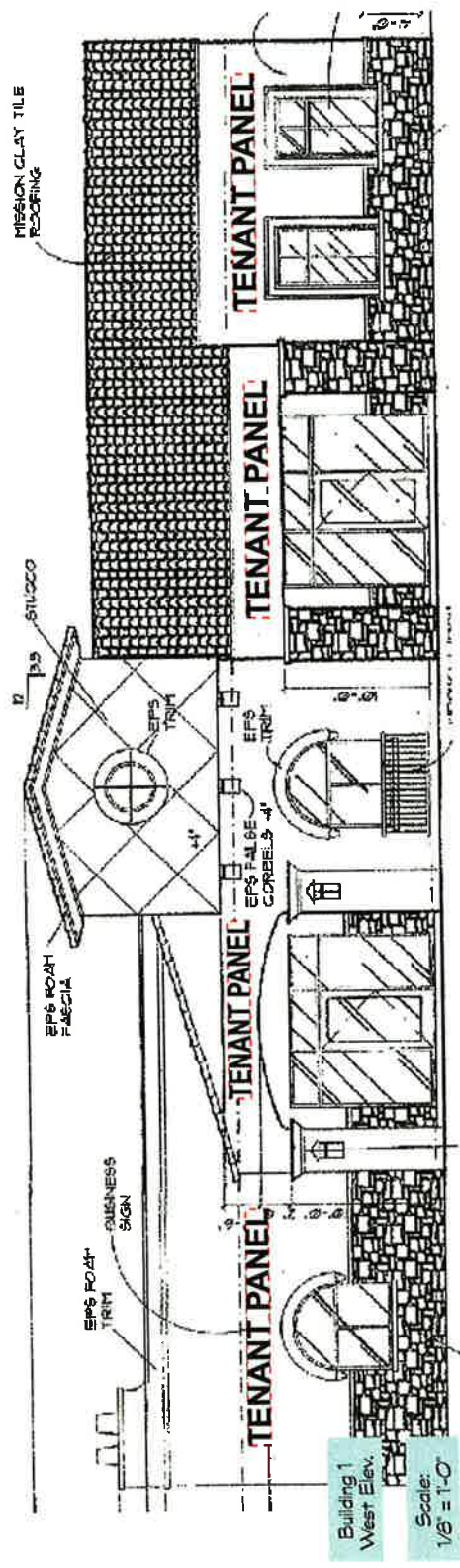
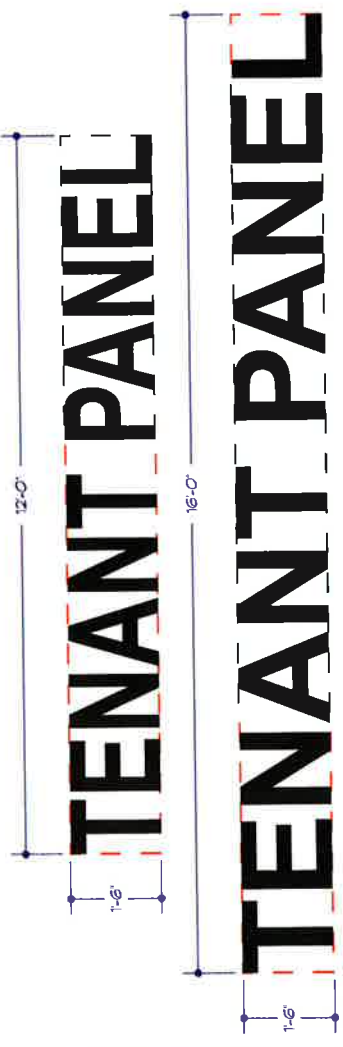
Shear Title  
Location  
Scale:  
1/2" = 1'-0"  
Drawing Number  
**04-1833**

REVERSE PAN CHANNEL ALUMINUM LETTERS  
Scale: 1/2" = 1'-0"

Fabricate & install 2 P.C. non-illuminated 1" deep aluminum letters painted MAP Block. Anodic 41-335.



Fabricate & install R.P.C. hand-illuminated letters with 3" deep returns & 6500 white 30ma neon, cloved with Town of Gilbert & landlord approval.



Scale: 1/8" = 1'-0"

Client:  
Higley Park  
Pomona, CA 92673

Location:  
Higley & Ray  
Gilbert, AZ



2831 N. 31st Ave.  
Phoenix, AZ 85018  
Tel: 602-979-0234  
Fax: 602-979-0234  
E-mail (Art Dept):  
royalsign@royalsign.net

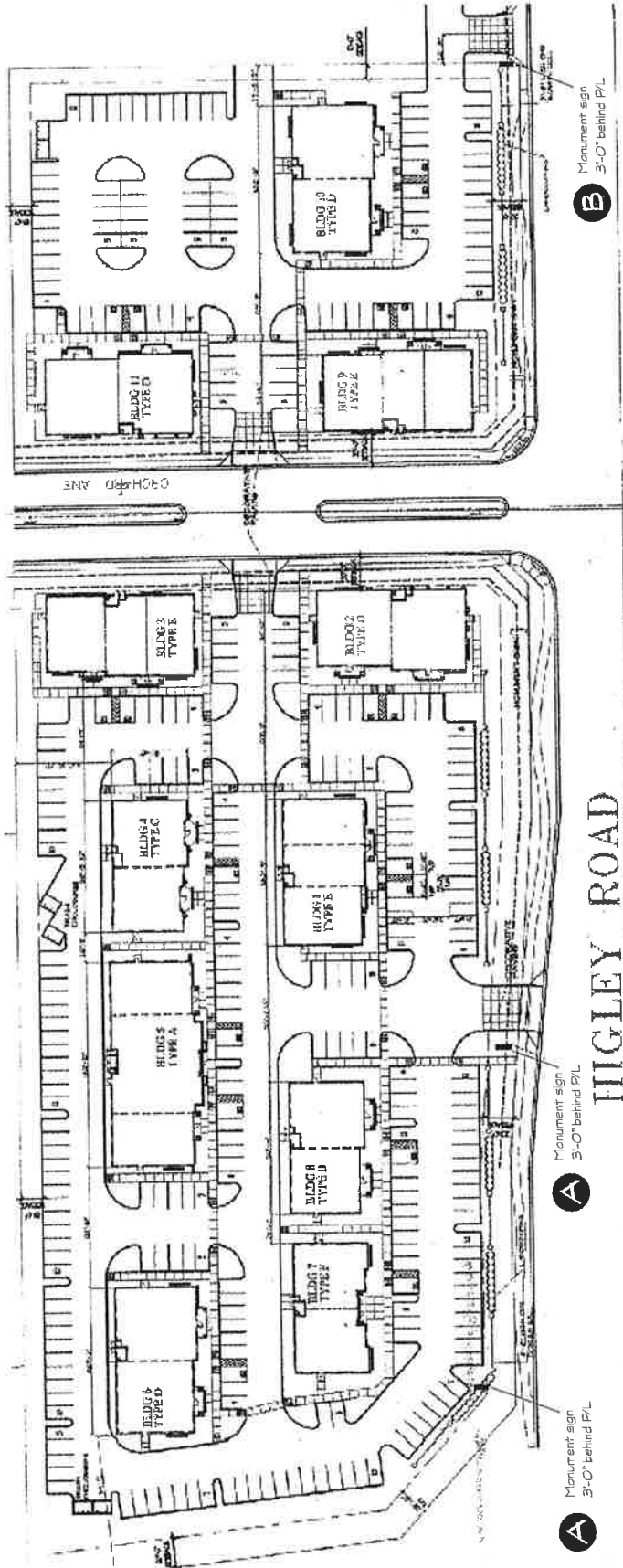
- Demetrius Martin
- demetrius@royalsign.net
- 20 JAN 05
- L. Hart
- K. Kozel

The Royal Sign Company  
2831 N. 31st Ave.  
Phoenix, AZ 85018  
Tel: 602-979-0234  
Fax: 602-979-0234  
E-mail: royalsign@royalsign.net

Sheet Title  
Location

Scale:  
1/2" = 1'-0"

Drawings Number  
05-0153



Client:  
Highway Park  
Professional Village

Location:  
Highway & Ray  
Gilbert, AZ



2831 N. 31st Ave.  
Phoenix, AZ 85009  
602.278-6988  
royalrgbco.com  
Email (Art Dept):  
royalrgb@royalrgb.net

DATE: 04-18-20

Client Representative:  
Dennis Martin

Design:  
dennis@royalrgb.net

Drawing or Revision Code:  
27 SEPT 04

Drawn By:  
L. Hart

Reviewed By:  
Dennis Martin

Scale:  
Kobal

Approval Signature:  
\_\_\_\_\_

Client:  
\_\_\_\_\_

Date:  
\_\_\_\_\_

Scale:  
\_\_\_\_\_

Excludes:  
\_\_\_\_\_

THIS DRAWING IS THE PROPERTY OF ROYAL RGB CO. IT IS TO BE USED ONLY FOR THE PROJECT AND LOCATION SPECIFICALLY IDENTIFIED HEREON. IT IS NOT TO BE REPRODUCED, COPIED, OR TRANSMITTED IN ANY FORM OR BY ANY MEANS, ELECTRONIC OR MECHANICAL, INCLUDING PHOTOCOPYING, RECORDING, OR BY ANY INFORMATION STORAGE AND RETRIEVAL SYSTEM, WITHOUT THE WRITTEN PERMISSION OF ROYAL RGB CO. ANY UNAUTHORIZED USE OF THIS DRAWING IS STRICTLY PROHIBITED. ROYAL RGB CO. SHALL BE RESPONSIBLE FOR THE ACCURACY OF THE INFORMATION PROVIDED HEREON. ROYAL RGB CO. SHALL NOT BE RESPONSIBLE FOR ANY ERRORS OR OMISSIONS. ROYAL RGB CO. SHALL NOT BE RESPONSIBLE FOR ANY DAMAGE TO PERSONS OR PROPERTY, INCLUDING CONSEQUENTIAL DAMAGES, ARISING FROM THE USE OF THIS DRAWING. ROYAL RGB CO. SHALL NOT BE RESPONSIBLE FOR ANY DELAYS OR INCOMPLETION OF THE PROJECT. ROYAL RGB CO. SHALL NOT BE RESPONSIBLE FOR ANY CHANGES TO THE PROJECT. ROYAL RGB CO. SHALL NOT BE RESPONSIBLE FOR ANY COSTS INCURRED BY THE CLIENT AS A RESULT OF THIS DRAWING. ROYAL RGB CO. SHALL NOT BE RESPONSIBLE FOR ANY LEGAL FEES INCURRED BY THE CLIENT AS A RESULT OF THIS DRAWING. ROYAL RGB CO. SHALL NOT BE RESPONSIBLE FOR ANY OTHER DAMAGES, INCLUDING ATTORNEY'S FEES, ARISING FROM THE USE OF THIS DRAWING. ROYAL RGB CO. SHALL NOT BE RESPONSIBLE FOR ANY OTHER DAMAGES, INCLUDING ATTORNEY'S FEES, ARISING FROM THE USE OF THIS DRAWING.

Sheet Title:  
Location

Scale:  
1/2" = 1'-0"

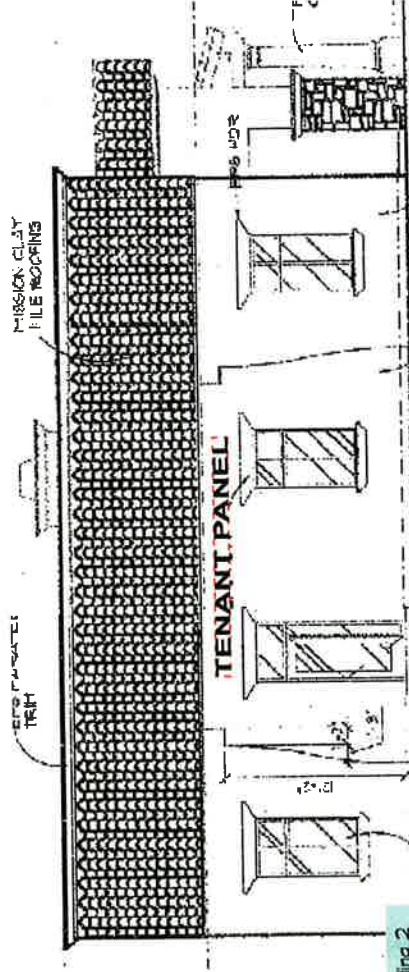
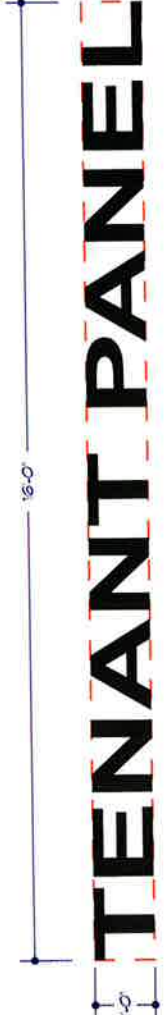
Drawing Number:  
04-1840

**REVERSE PAN CHANNEL ALUMINUM LETTERS**

Scale: 1/2" = 1'-0"

Fabricate & install R.P.C. non-illuminated 1" deep aluminum letters painted MAP Black. Anodic 41-335.

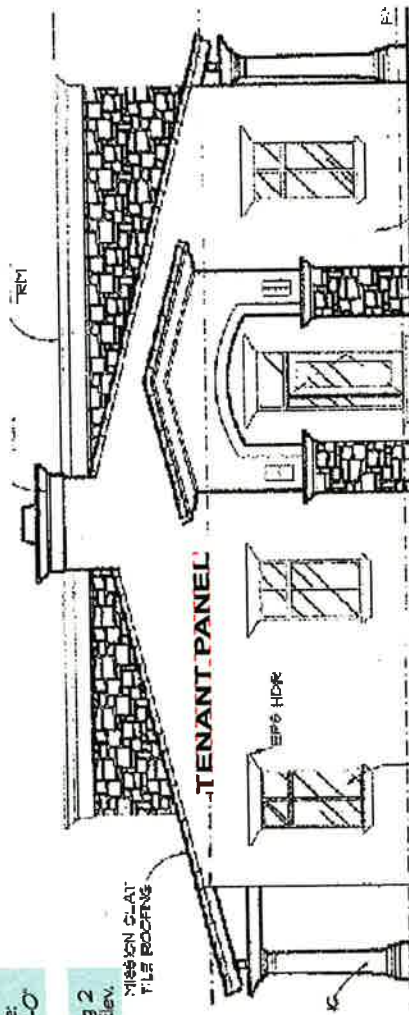
Fabricate & install R.P.C. halo-illuminated letters with 3" deep returns & 6500 white 30ma neon, allowed with Town of Gilbert & landlord approval.



Building 2 East Elev.

Scale: 1/8" = 1'-0"

Building 2 West Elev.



Scale: 1/8" = 1'-0"





Client:  
Highly Park  
Pentastand Village

Location:  
Highly & Roy  
Gilbert, AZ



2831 N. 31st Ave.  
Phoenix, AZ 85009  
602-276-6988  
Fax: 602-276-8254  
E-mail: [roy@roydesign.net](mailto:roy@roydesign.net)  
[roydesign.net](http://roydesign.net)

- Scale Representative: Dennis Martin
- Scale: deming@roydesign.net
- Drawing or Revision Date: 27 SEPT 04
- Drawn By: L. Hart
- Covered By: [Redacted]
- Drawn By: [Redacted]
- Checked By: [Redacted]
- Approved By: [Redacted]
- Scale: [Redacted]
- Scale: [Redacted]
- Scale: [Redacted]
- Scale: [Redacted]

101810  
The following information is provided for your information only. It is not intended to be a contract. The actual work to be performed shall be as shown on the drawings and specifications. The drawings and specifications are the sole responsibility of Roy Design, Inc. No part of this document may be reproduced without the written permission of Roy Design, Inc.

Scale:  
1/2" = 1'-0"

Location

Scale:  
1/2" = 1'-0"

Drawing Number  
**04-1839**

REVERSE PAN CHANNEL  
ALUMINUM LETTERS

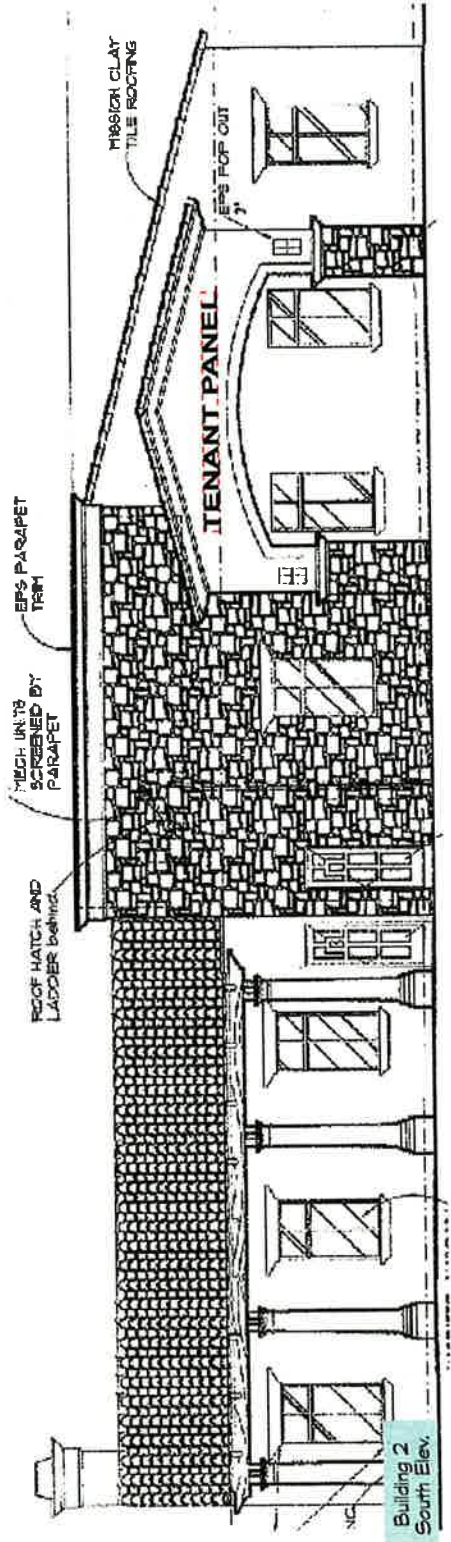
Scale:  
1/2" = 1'-0"

Fabricate & install R.P.C. non-illuminated T deep aluminum letters painted MIP Black Anodic 41-335.

OPTION 1

Fabricate & install R.P.C. halo-illuminated letters with 3" deep returns & 6500 white 30ma neon, allowed with Town of Gilbert & landlord approval.

OPTION 2



Building 2  
South Elev.

Scale:  
1/8" = 1'-0"



Scale:  
1/16" = 1'-0"

Client:  
Highway Park  
Professional Village  
Gilbert, AZ

**REVERSE PAN CHANNEL ALUMINUM LETTERS**

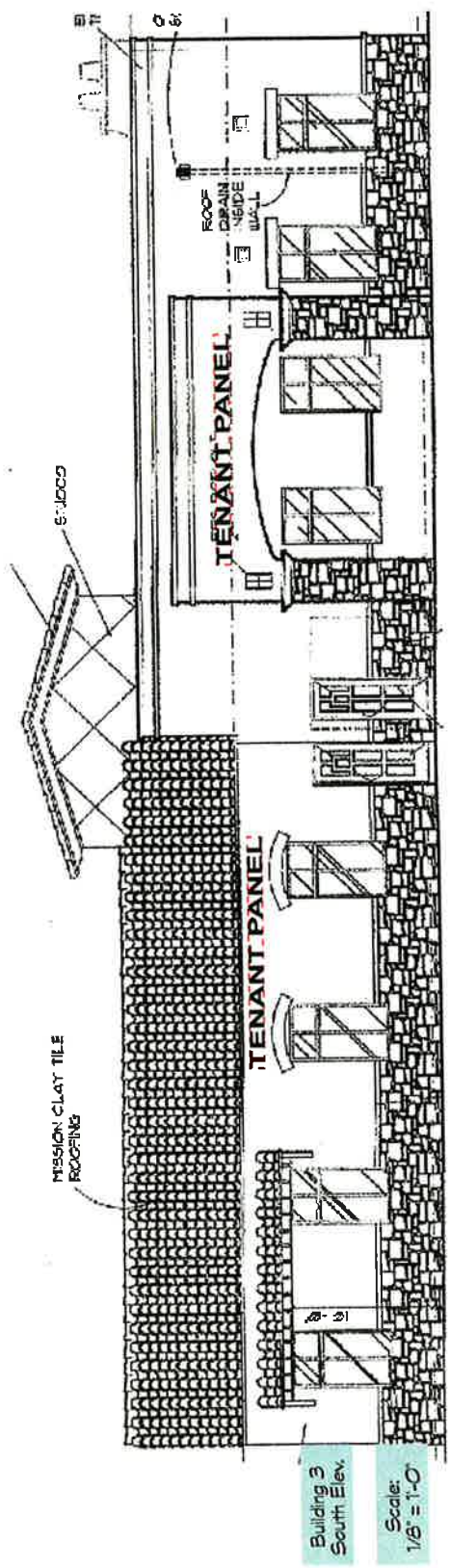
Scale: 1/2" = 1'-0"

Fabricate & install R.P.C. non-illuminated T deep aluminum letters painted M-AD Black Anodic 41-395.

Fabricate & install R.P.C. non-illuminated letters with 3" deep returns & 6500 white 30ma neon, allowed with Town of Gilbert & landlord approval.



16'-0" **TENANT PANEL** 1'-0"



Building 3  
South Elev.  
Scale: 1/8" = 1'-0"



Scale: 1/16" = 1'-0"

- Sales Representative: Demille Martin
- demille@royalalign.net
- Drawing or Revision Date: 27 SEPT 04
- Drawn By: L. Hart
- Checked By: [Redacted]
- Form Used: K&B

- Approved Signature: [Redacted]
- Checked: [Redacted]
- Scale: [Redacted]
- Exempt: [Redacted]

Sheet Title  
Location  
Scale: 1/2" = 1'-0"  
Drawing Number

**04-1836**



Client:  
Highly Park  
Professional Village

Location:  
Highly & Ray  
Gilbert, AZ

**TOBICO**  
2831 N. 31st Ave.  
Phoenix, AZ 85009  
Tel: 602-278-0886  
Fax: 602-278-0254  
toybalight@toybalight.net

- Sales Representative: Dennis Martin
- Estimator: demartin@toybalight.net
- Drawing or Revision Date: 27 SEPT 04
- Drawn By: L. Hart
- Revised By:
- Specs. Listed: Metal
- Approved Systems:
- Color:
- Coatings:
- Signs:
- Structures:

TOBICO is a national leader in the design and construction of illuminated signs and graphics. We have a proven track record in the design and construction of illuminated signs and graphics for a wide variety of clients and applications. Our experienced design and construction professionals work closely with our clients to create a sign or graphic that meets their needs and budget. We are committed to providing the highest quality products and services to our clients.

Sheet Title  
**Location**

Scale:  
1/2" = 1'-0"

Drawing Number:  
**04-1835**

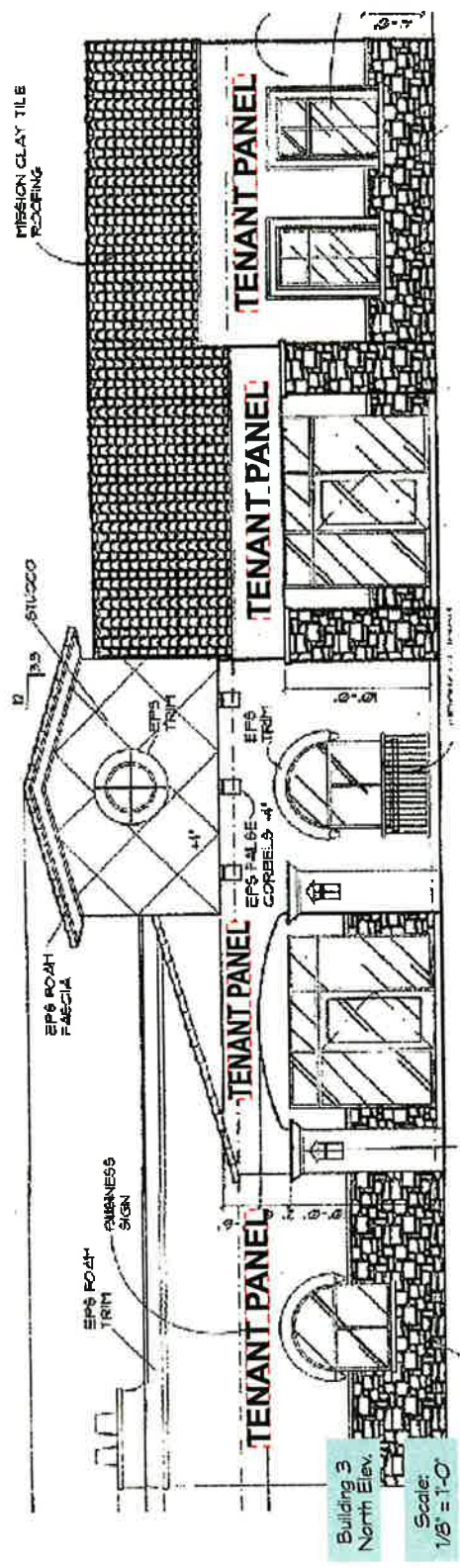
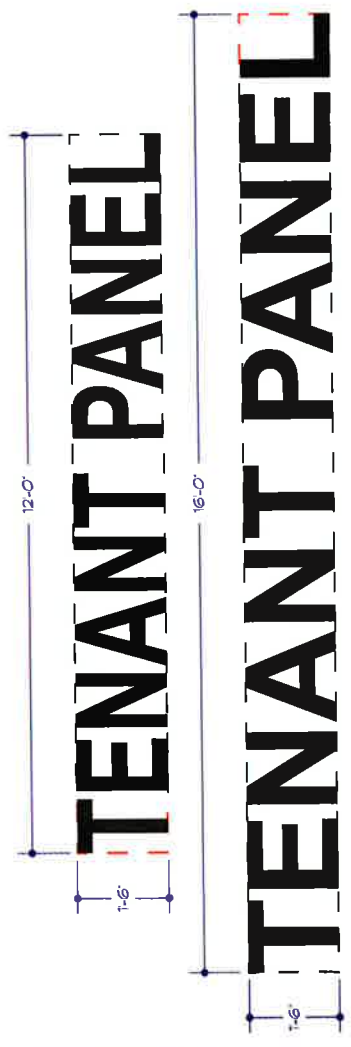
**REVERSE PAN CHANNEL ALUMINUM LETTERS**

Scale: 1/2" = 1'-0"

Fabricate & install R.P.C. non-illuminated 1" deep aluminum letters painted MAP Black Anodic 41-355.



Fabricate & install R.P.C. halo-illuminated letters with 3" deep returns & 6500 white 30ma neon, allowed with Town of Gilbert & landlrd approval.



Scale: 1/16" = 1'-0"

Client:  
Higley Park  
Professional Village

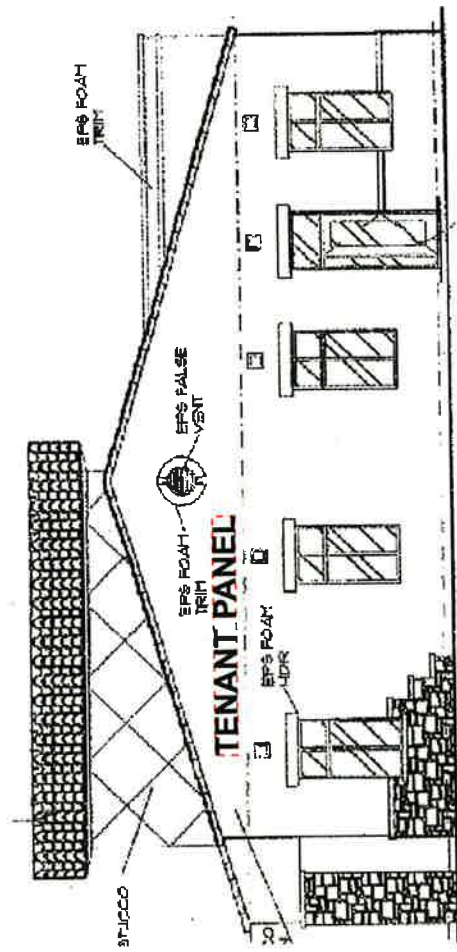
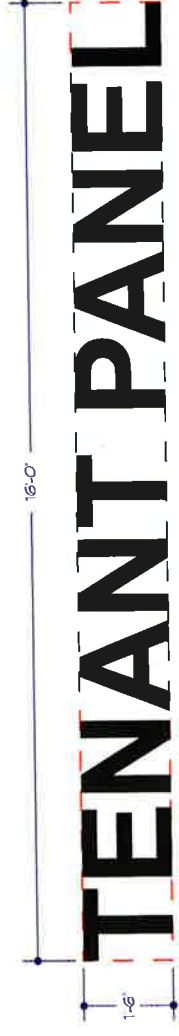
Scale:  
1/2" = 1'-0"

**REVERSE PAN CHANNEL  
ALUMINUM LETTERS**

Fabricate & install R.P.C. non-illuminated T deep aluminum letters painted MAP Black Anodic 41-335.



Fabricate & install R.P.C. halo-illuminated letters with 3" deep returns & 6500 white 30ma neon, allowed with Town of Gilbert & landlord approval.



Building 3  
West Elev.

Scale:  
1/8" = 1'-0"



Scale:  
1/16" = 1'-0"

Location:  
Higley & Ray  
Gilbert, AZ

2031 N. 21st Ave.  
Phoenix, AZ 85009  
Fax: 602-278-0888  
Tel: 602-278-0581  
royalsign@royalsign.net

- 6500 White Anodic 41-335
- Dennis Martin
- 6500
- dennis@royalsign.net
- Drawing for Revision 12/15
- 27 SEPT 04
- Chris Inc.
- L. Hart
- Revised EIR
- Chris, Janet
- Kabel
- Approved Signature
- Client
- Contract
- Date
- Emergency

ROYAL SIGN COMPANY  
1001 N. 21st Ave. Suite 100  
Phoenix, AZ 85009  
Tel: 602-278-0581  
Fax: 602-278-0888  
royalsign@royalsign.net

Sheet Title  
Location

Scale:  
1/2" = 1'-0"

Drawing Number  
**04-1837**





**REVERSE PAN CHANNEL ALUMINUM LETTERS**

Scale: 1/2" = 1'-0"

Fabricate & install R.P.C. non-illuminated T deep aluminum letters painted MAP Black Anodic 41-335.



Fabricate & install R.P.C. halo-illuminated letters with 3" deep returns & 6500 white 30ma neon, allowed with Town of Gilbert & landlord approval.

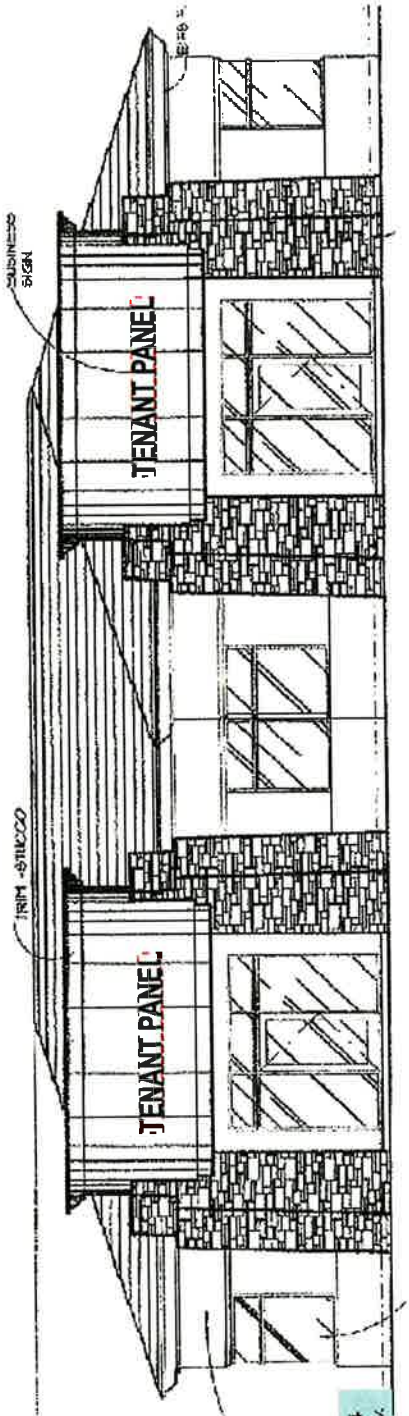


Client:  
Highway Park  
Professional Village

101510  
Highway Park  
Gilbert, AZ

9831 N. 31st Ave.  
Phoenix, AZ 85009  
Tel: 602-378-4988  
Fax: 602-378-0254  
royalright@royalright.com

- Design: Royalright.com
- Design: Dennis Martin
- Design: dennis@royalright.com
- Design: Approved for Review: 2024
- Design: 27 SEPT 24
- Design: L. Hart
- Design: 09/23/24
- Design: Chris Liked
- Design: Kabe
- Design: Approved Signatures
- Design: Chris
- Design: L. Hart
- Design: Chris
- Design: Chris



Building 4  
West Elev.

Scale:  
1/8" = 1'-0"



Scale:  
1/16" = 1'-0"

Approved for Review: 2024  
27 SEPT 24  
L. Hart  
Chris Liked  
Kabe

Shear Title  
Location  
Scale:  
1/2" = 1'-0"  
Drawing Number:  
**04-1846**







Client:  
Highly Park  
Professional Village

Location:  
Highly & Gay  
Chandler, AZ



2851 N 31st Ave.  
Phoenix, AZ 85009  
802-276-8084  
royalign.com  
Email (art Dept):  
royalign@royalign.net

TECHNICALITY

Edits: Reprogramme

Denise Martin

6-2-20

dennise@royalign.net

Created by: Royalign Corp.

27 SEPT 04

Client: Bly

L. Hart

Reviewed By:

Chris Leland

Kabel

Approved Signatures:

Chris

Art Dept

Revis

Estimate:

The sign application shown on this drawing is for the proposed sign for the highly park professional village located at the intersection of highly and gay in chandler, az. the sign is to be installed on the exterior wall of the building. the sign is to be illuminated with led lights. the sign is to be made of aluminum. the sign is to be made of reverse pan channel aluminum letters. the sign is to be made of 1" deep aluminum letters. the sign is to be made of 3000 white 3000 neon, allowed with town of gilbert & landlord approval.

Sheet Title

Location

Scale:  
1/2" = 1'-0"

Drawing Number

04-1853

Scale:  
1/2" = 1'-0"

REVERSE PAN CHANNEL  
ALUMINUM LETTERS

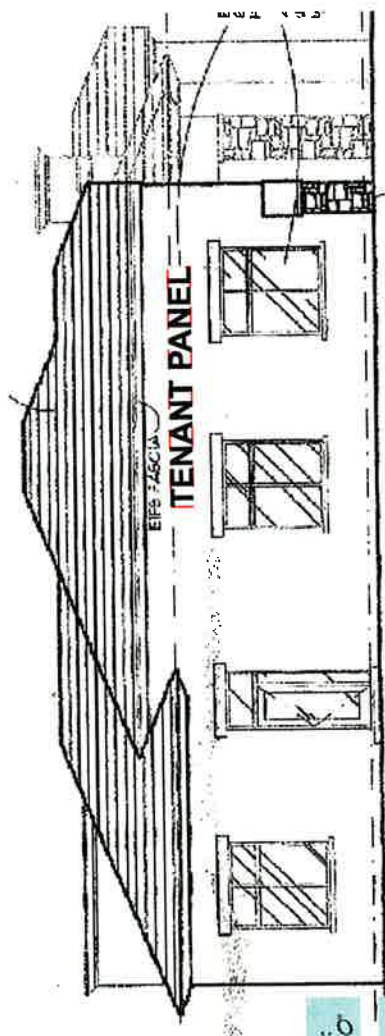
Fabricate & install R.P.C. non-illuminated 1" deep aluminum letters painted MAP Black Anodic 41-335.

CS-01

Fabricate & install R.P.C. hal-illuminated letters with 3" deep returns & 6500 white 3000 neon, allowed with Town of Gilbert & landlord approval.

CS-02

1'-6" | TENANT PANEL | 15'-0"



Scale:  
1/8" = 1'-0"

Building 5  
North Elev.



Scale:  
1/16" = 1'-0"



Client:  
Higley Park  
Professional Village

Scale:  
1/2" = 1'-0"

**REVERSE PAN CHANNEL  
ALUMINUM LETTERS**

Fabricate & install R.P.C. non-illuminated T deep aluminum letters painted M/P Black Anodic 41-335.

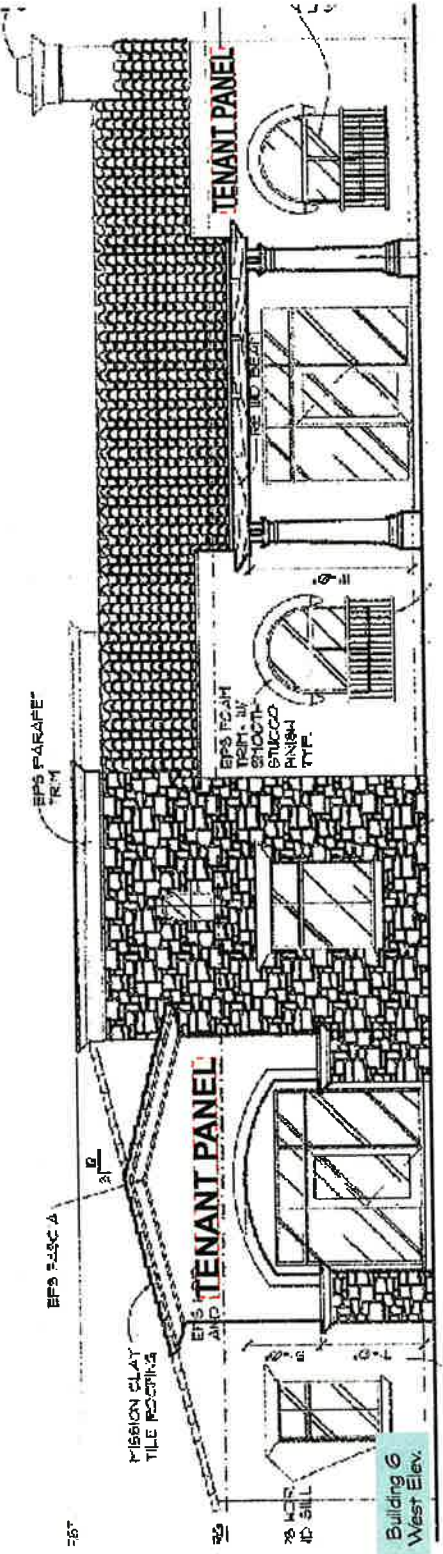


**TENANT PANEL**

Fabricate & install R.P.C. halo-illuminated letters with 3" deep returns & 6500 white 30ma neon, allowed with Town of Gilbert & endlord approval.



**royalblue**  
2831 N. 31st Ave.  
Phoenix, AZ 85009  
Tel: 602-976-4988  
Fax: 602-976-4234  
royalblue@royalblue.net



Scale:  
1/8" = 1'-0"



Scale:  
1/16" = 1'-0"

- Sales Representative: Dennis Mann
- E-MAIL: dennis@royalblue.net
- Drawing or Revision Date: 27 SEPT 04
- Drawn By: L. Hart
- Reviewed By:
- Company Logo:
- Client:
- Contract:
- Notes:

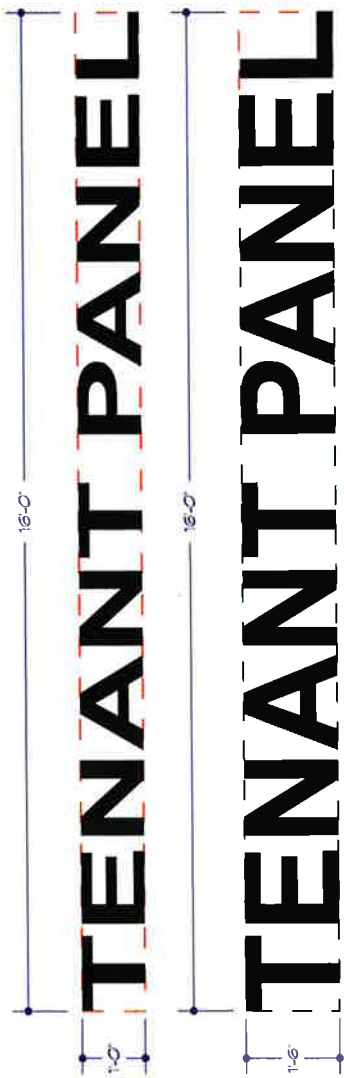
ROYALBLUE  
2831 N. 31st Ave.  
Phoenix, AZ 85009  
Tel: 602-976-4988  
Fax: 602-976-4234  
royalblue@royalblue.net

Scale:  
1/2" = 1'-0"

Location

Sheet Title

Drawing Number:  
**04-1841**



**REVERSE PAN CHANNEL ALUMINUM LETTERS**

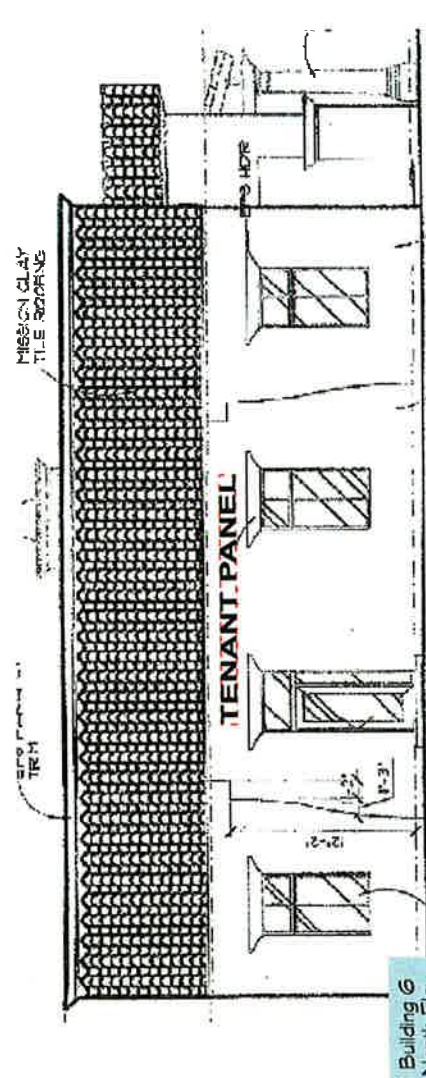
Scale: 1/2" = 1'-0"

Fabricate & install R.P.C. non-illuminated 1" deep aluminum letters painted HAP Black Anodic 41-335.

OPTION 1

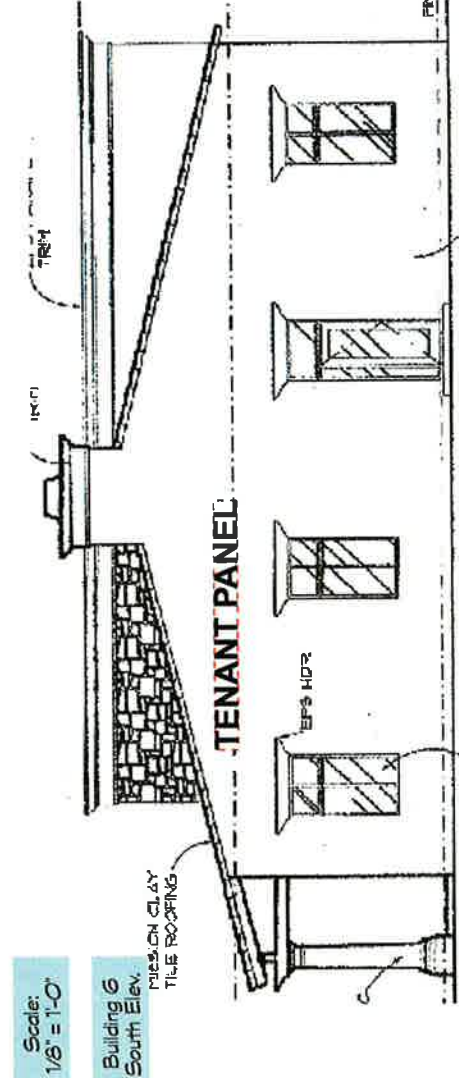
Fabricate & install R.P.C. halo-illuminated letters with 3" deep returns & G500 white 30ma neon, allowed with Town of Gilbert & landlord approval.

OPTION 2



Building 6 North Elev.

Scale: 1/8" = 1'-0"



Building 6 South Elev.



Scale: 1/16" = 1'-0"



Client: Higley Park Professional Village

Location: Higley & Ray Gilbert, AZ



5834 N 31st Ave  
Phoenix, AZ 85009  
602-978-6286  
fax: 602-978-0284  
E-mail: (AZ Dept):  
royalrgb@royalrgb.net

- Senior Project Manager: Dennis Martin
- Architect: Dennis@royalrgb.net
- Contractor: R.P.C. High Color
- Contractor: R.P.C.
- Contractor: L. Hart
- Contractor: RCP
- Contractor: Kabeel
- Approvals: Approved
- Contract: Approved
- Contract: Approved
- Contract: Approved
- Contract: Approved

This drawing is prepared for the purpose of providing a visual representation of the proposed project. It is not to be used for construction or other purposes without the written approval of the architect. The architect shall not be responsible for any errors or omissions in this drawing, or for any consequences arising from its use. The architect's liability is limited to the professional services provided by the architect. The architect's liability shall not extend to any other parties or for any other purposes. The architect's liability shall not extend to any other parties or for any other purposes. The architect's liability shall not extend to any other parties or for any other purposes.

Sheet Title: Location  
Scale: 1/2" = 1'-0"  
Drawing Number: 05-0431



Client:  
Highway Park  
Professional Village

Location:  
Highway Park  
Gilbert, AZ

**royalalign**  
2931 N. 31st Ave.  
Phoenix, AZ 85009  
602-978-8899  
E-mail (Art Dept):  
royalign@royalalign.net

Scale Representative:  
Dennie Martin  
E-Mail:  
denmie@royalalign.net  
Created on Revision Date:  
27 SEPT 04  
Drawn By:  
L. Hart  
Revised By:  
Elena Ukez  
Kobal

Approved By:  
Checked By:  
Reviewed By:  
Drawn By:  
E-mail:

The project information is provided for your information only. It is not to be used for any other purpose without the written consent of Royalalign. The information is provided as is, without warranty of any kind, express or implied, including but not limited to the accuracy, completeness, or suitability for any purpose. The information is provided for your use only and is not to be distributed, copied, or otherwise used for any other purpose without the written consent of Royalalign.

Sheet Title:  
**Location**  
Scale:  
1/2" = 1'-0"

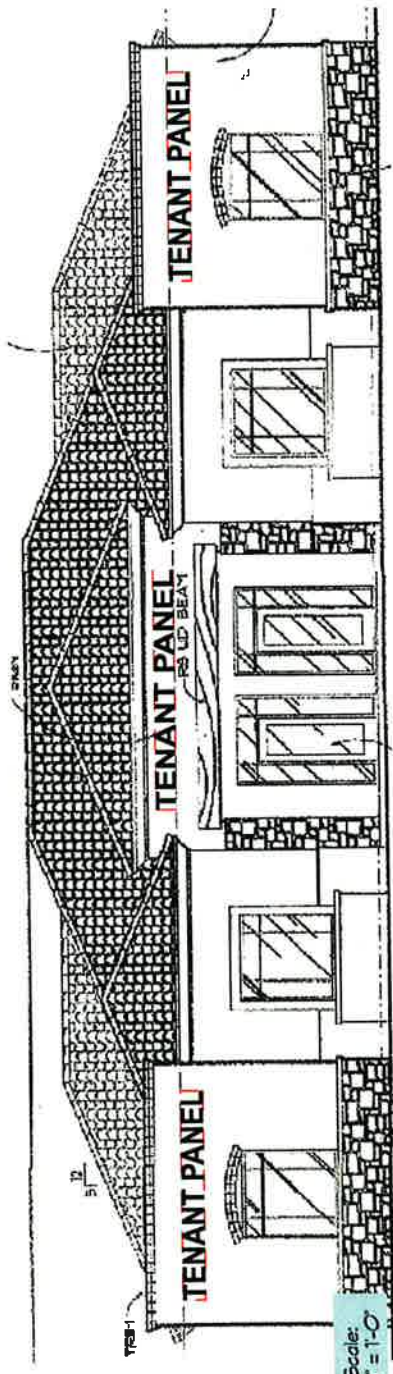
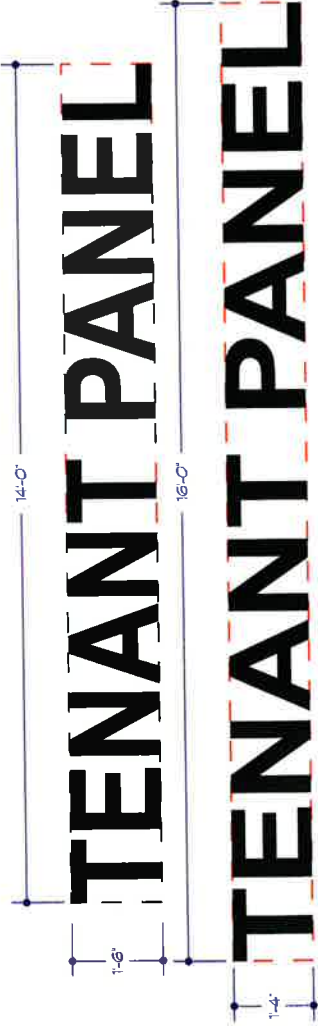
Drawing Number:  
**04-1856**

**REVERSE PAN CHANNEL ALUMINUM LETTERS**

Scale:  
1/2" = 1'-0"

Fabricate & install R.P.C. non-illuminated 1" deep aluminum letters painted MAP Black Anodic 41-335.

Fabricate & install R.P.C. halo-illuminated letters with 3" deep returns & 6500 white 30ma neon, allowed with Town of Gilbert & landlond approval.



Scale:  
1/8" = 1'-0"  
Building 7  
West Elev.



Scale:  
1/16" = 1'-0"



Client:  
Highly Park  
Professional Village

Location:  
Highly & Roy  
Gilbert, AZ



2831 N. 31st Ave.  
Phoenix, AZ 85009  
Tel: 602-278-6989  
E-mail: [roy@toybico.com](mailto:roy@toybico.com)  
[www.toybico.com](http://www.toybico.com)

- Sales Representative: Dennis Martin
- Account Manager: [dennis@toybico.com](mailto:dennis@toybico.com)
- Company for Material Order: 27 SEPT 24
- Order By: L. Hart
- Ship to: Phoenix AZ
- Order Used: Kabil
- Approval Signature: \_\_\_\_\_
- Drawn: \_\_\_\_\_
- Checked: \_\_\_\_\_
- Estimated: \_\_\_\_\_

TOYBICO  
10000 W. Camelback Rd., Suite 100  
Phoenix, AZ 85038  
Tel: 602-278-6989  
Fax: 602-278-6989  
E-mail: [roy@toybico.com](mailto:roy@toybico.com)  
[www.toybico.com](http://www.toybico.com)

Sheet Title  
Location

Scale:  
1/2" = 1'-0"

Drawing Number:  
04-1857

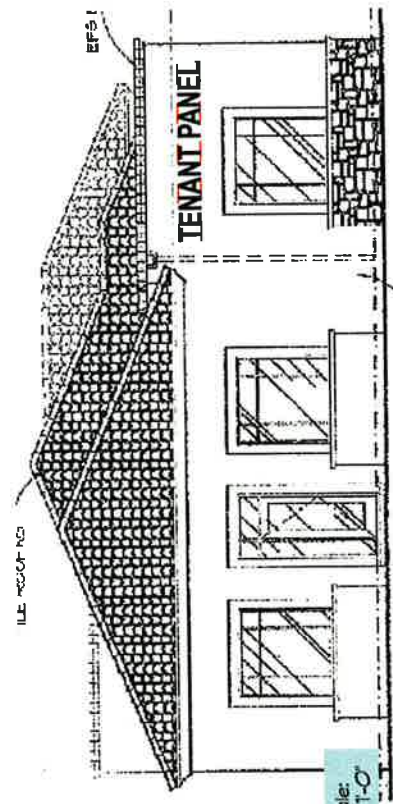
### REVERSE PAN CHANNEL ALUMINUM LETTERS

Scale: 1/2" = 1'-0"

Fabricate & install R.P.C. non-illuminated T deep aluminum letters painted MIP Black Anodic 41-335.



Fabricate & install R.P.C. halo-illuminated letters with 3" deep returns & 6500 white 30ma neon, allowed with Town of Gilbert & landlord approval.



Scale: 1/8" = 1'-0"  
Building 7  
North Elev.



Scale: 1/16" = 1'-0"

Client:  
Higley Park  
Professional Village

Location:  
Higley & Ray  
Gilbert, AZ



2831 N. 31st Ave.  
Phoenix, AZ 85009  
602-278-8988  
royal@royal-sign.net  
royal.design@royal-sign.net

ROYAL SIGNCO

- Owner Representation:**  
Dennis Mann
- DESIGN:**  
dennis@royal-sign.net
- Contractor:**  
27 SEPT 04  
Chris By
- Interior:**  
L. Hart
- Architect:**  
Kapel
- Contractor:**  
Kapel
- Approved Signatures:**
- Color:**
- Material:**
- Scale:**
- Comments:**

ROYAL SIGNCO  
1101 W. McDowell Ave., Suite 100  
Phoenix, AZ 85007  
602-278-8988  
royal@royal-sign.net  
royal.design@royal-sign.net

Sheet Title  
**Location**

Scale:  
1/2" = 1'-0"  
Drawing Number

**04-1848**

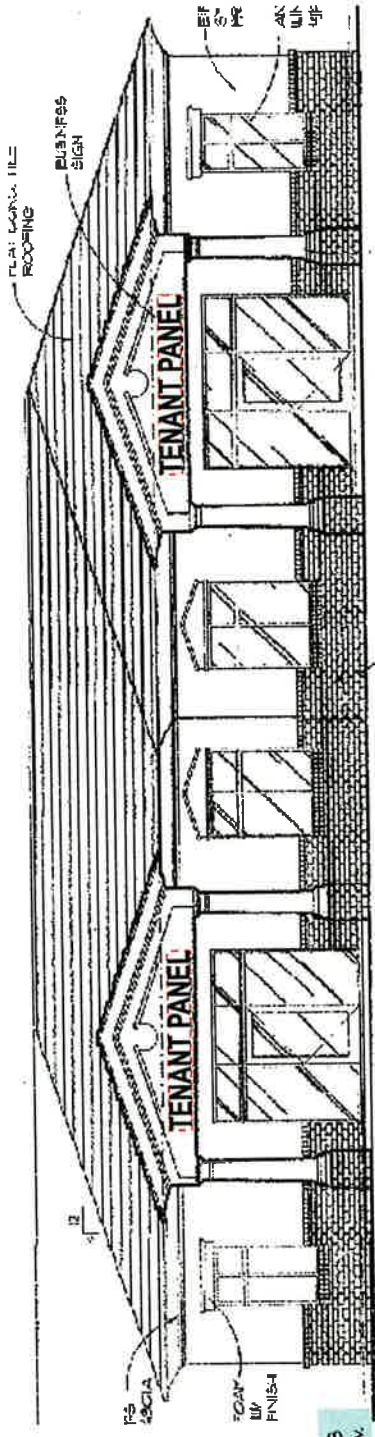
**REVERSE PAN CHANNEL ALUMINUM LETTERS**

Scale: 1/2" = 1'-0"

Fabricate & install R.P.C. non-illuminated T deep aluminum letters painted MAP Black. Anodic 41-335.



Fabricate & install R.P.C. halo-illuminated letters with 3" deep returns & 6500 white 30ma neon, allowed with Town of Gilbert & landlord approval.



Building B  
West Elev.

Scale:  
1/8" = 1'-0"



Scale:  
1/16" = 1'-0"



Client:  
Higley Park  
Professional Village

Location:  
Higley & Ray  
Gilbert, AZ



2631 N. 31st Ave.  
Phoenix, AZ 85008  
602.278-9998  
602.278-0284  
royalsign@royalsign.net

- Chris Rappaport
- Dennis Martin
- adam@royalsign.net
- 27 SEPT 24
- Chris St.
- L. Hart
- 602.278-9998
- Kabel
- Approved Signatures
- Client
- Contract
- Scope
- Remarks

As of 10/15/2024, this drawing is the property of JOIBDO. It is to be used only for the project and location specified. Any other use, reproduction, or distribution without the written consent of JOIBDO is strictly prohibited. JOIBDO reserves the right to modify or update this drawing without notice. This drawing is not to be used for any other project or location. JOIBDO is not responsible for any errors or omissions. This drawing is provided as a guide only. The final design and construction are subject to the client's approval and the local building department's requirements. JOIBDO is not responsible for any delays or changes in the project schedule. JOIBDO is not responsible for any damage to the property or any other loss. JOIBDO is not responsible for any other legal liability. JOIBDO is not responsible for any other legal liability.

Shear Title  
Location  
Scale:  
1/2" = 1'-0"  
Drawing Number  
04-1860

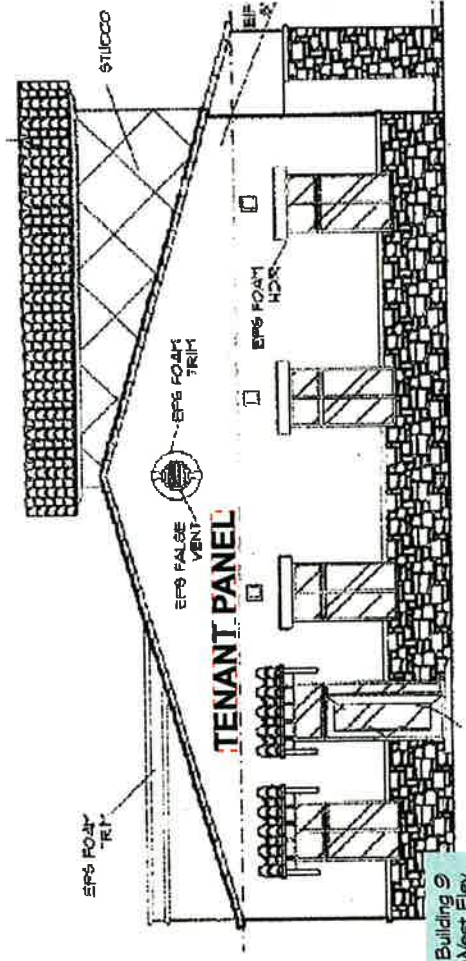
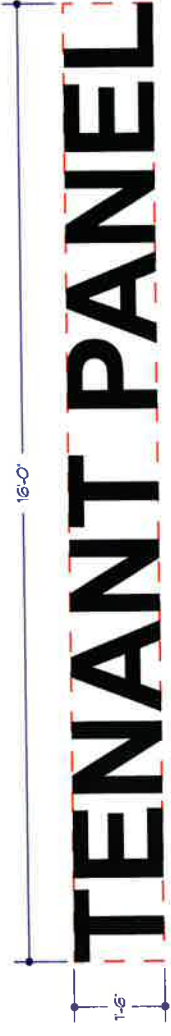
**REVERSE PAN CHANNEL ALUMINUM LETTERS**

Scale: 1/2" = 1'-0"

Fabricate & install RPC, non-illuminated, 1" deep aluminum letters painted MAP Black Anodic 41-335.

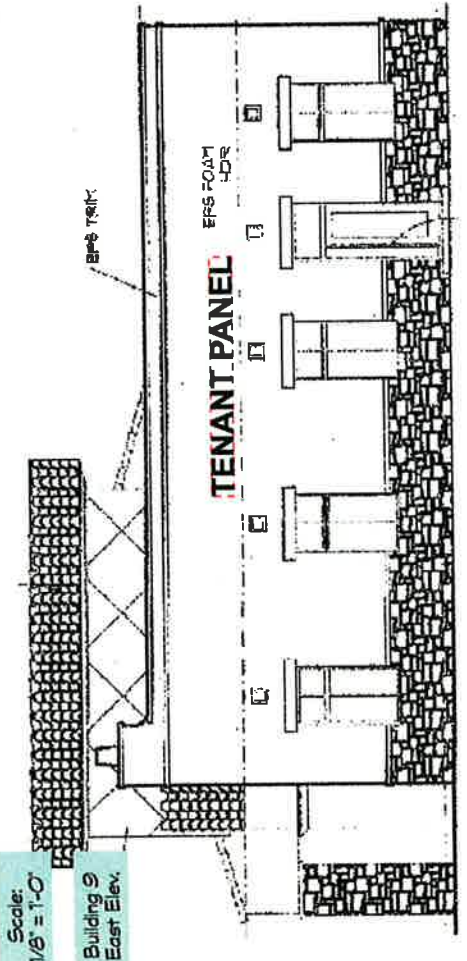


Fabricate & install RPC, halo-illuminated letters with 3" deep returns & 6500 white 30ma neon, allowed with Town of Gilbert & landlord approval.



Building 9 West Elev.

Scale: 1/16" = 1'-0"



Scale: 1/8" = 1'-0"

Building 9 East Elev.



Client:  
Higley Park  
Professional Village

Architect:  
Higley & Roy  
Glendale, AZ



2631 N. 31st Ave.  
Phoenix, AZ 85009  
602-278-8084  
royal@royalsign.net  
royalsign@royalsign.net

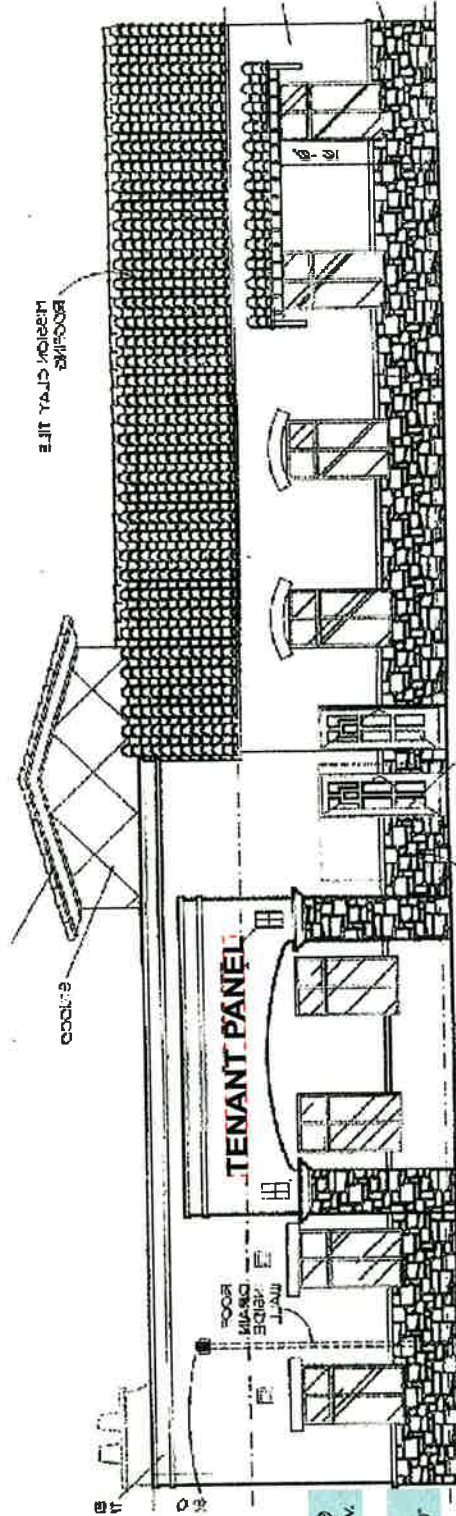
ALUMINUM LETTERS

**REVERSE PAN CHANNEL  
ALUMINUM LETTERS**

Scale:  
1/2" = 1'-0"

Fabricate & install R.P.C. non-illuminated 1" deep aluminum letters painted MAP Black Anodic 41-335.

Fabricate & install R.P.C. halo-illuminated letters with 3" deep returns & 6500 white 30ma neon, allowed with Town of Gilbert & landlord approval.



Building 9  
North Elev.

Scale:  
1/8" = 1'-0"

Sales Representative:  
Denise Martin

E-Mail:  
denise@royalsign.net

Drawing or Revision Date:  
27 SEPT 04

Drawn By:  
Li Hart

Reviewed By:  
Kabel

Form Used:  
Kabel

- Approved Engineering
- Client
- Contract
- Cost
- Delivery
- Drawings
- Installation
- Material
- Production
- Shipping
- Storage
- Support

ROYAL SIGN is a leading manufacturer of aluminum signs and lettering. We have been in business for over 30 years and have a proven track record of providing quality products and services to our customers. Our products are made from high quality materials and are designed to last. We offer a wide variety of products including aluminum signs, lettering, and more. We are proud to serve our customers and provide them with the best quality products and services available.

Sheet Title

Location

Scale:  
1/2" = 1'-0"

Drawing Number

**04-1859**



Scale:  
1/16" = 1'-0"



Client:  
 Highley Park  
 Professional Village

Location:  
 Highley & Roy  
 Gilbert, AZ

**royalblue**  
 5831 N. 51st Ave.  
 Phoenix, AZ 85009  
 Fax: 602-278-0284  
 E-mail: (AZ) Dept. 01  
 royaleign@royalblue.com

- Project: Highley Park
- Design: Danna Martin
- EM: dmartin@royalblue.com
- Drawing or Revision Date: 27 SEPT 04
- Drawn By: L. Hart
- Reviewed By: Roma Ulsack
- Scale: Kabeel

- Approved: [Signature]
- Date: [Date]
- Comments: [Text]
- Notes: [Text]
- Revisions: [Text]

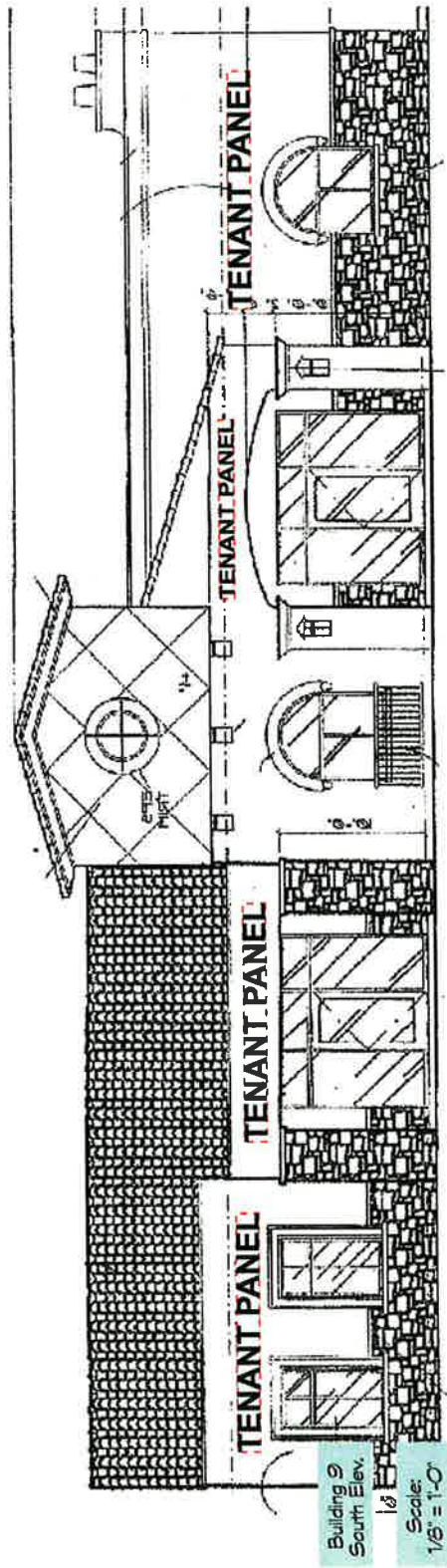
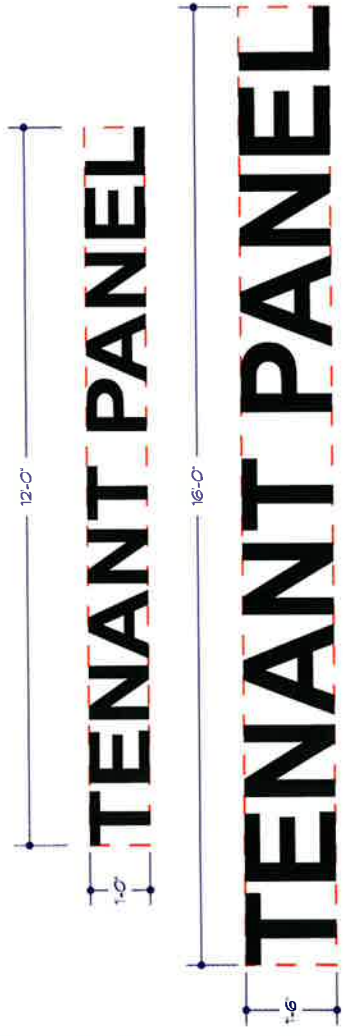
Swear Time  
 Location  
 Scale:  
 1/2" = 1'-0"  
 Drawing Number:  
**04-1858**

**REVERSE PAN CHANNEL ALUMINIUM LETTERS**  
 Scale: 1/2" = 1'-0"

Fabricate & install R.P.C. non-illuminated T deep aluminum letters painted MIP Black. Anodis 41-335.



Fabricate & install R.P.C. halo-illuminated letters with 3" deep returns & 6500 white 30ma neon, allowed with Town of Gilbert & landlord approval.



Scale:  
 1/16" = 1'-0"

Client:  
Higley Park  
Portofino Village

Location:  
Higley & Ray  
Gilbert, AZ



2831 N. 31st Ave.  
Phoenix, AZ 85009  
602-278-8986  
royalco.com  
Email (art dept):  
royalcoart@royalco.net

- Edges Reproduction: Dennis Martin
- Artist: dennis@royalco.net
- Drawing or Revision Date: 27 SEPT 04
- Drawn By: Li Han
- Reviewed By: [Redacted]
- Form Used: Kugel
- Approved Signatures: [Redacted]
- Client: [Redacted]
- Contract: [Redacted]
- Scale: [Redacted]
- Estimate #: [Redacted]

Sheet Title  
Location  
Scale: 1/2" = 1'-0"  
Drawing Number: 04-1843

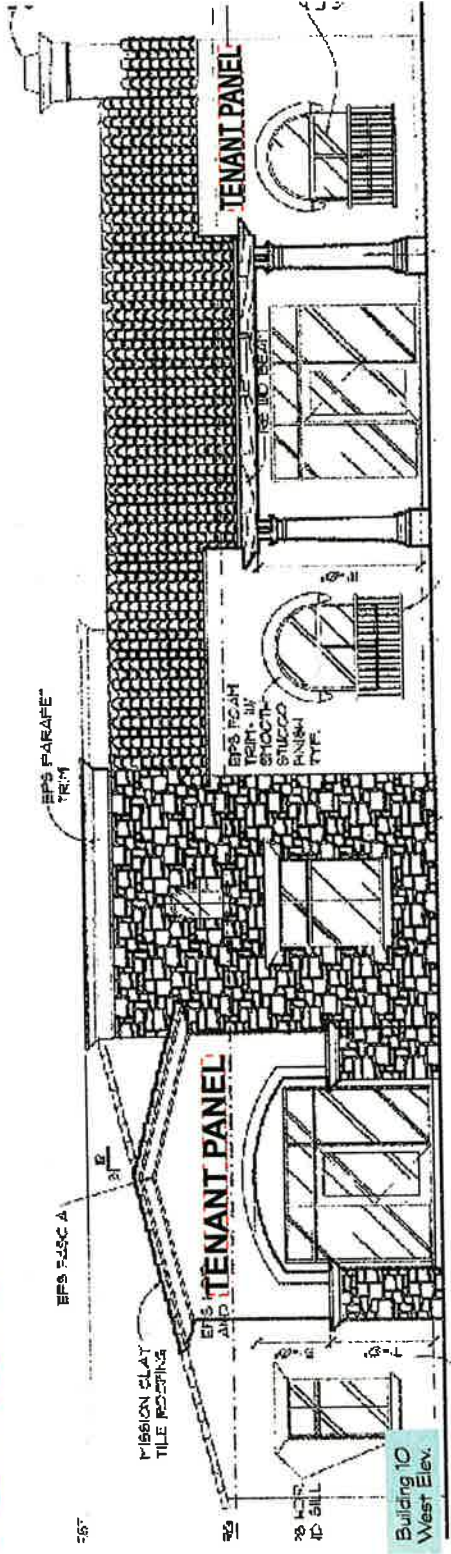
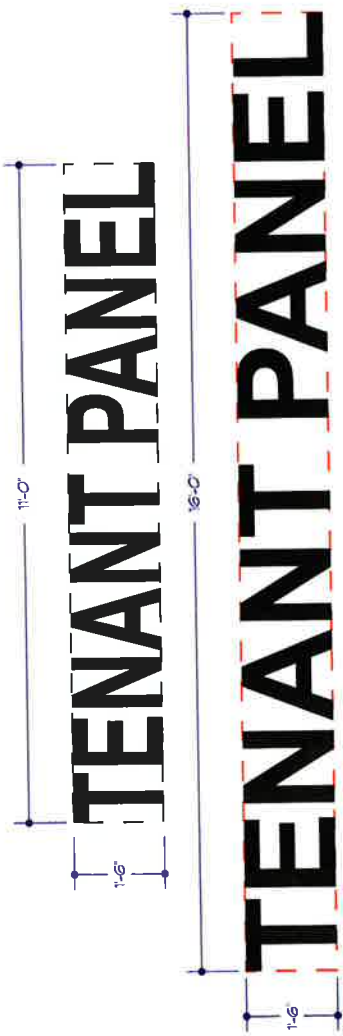
**REVERSE PAN CHANNEL ALUMINUM LETTERS**

Scale: 1/2" = 1'-0"

Fabricate & install R.P.C. non-illuminated 1" deep aluminum letters painted MAP Black Anodic 41-335.



Fabricate & install R.P.C. halo-illuminated letters with 3" deep returns & 6500 white 30ma neon, allowed with Town of Gilbert & landlord approval.



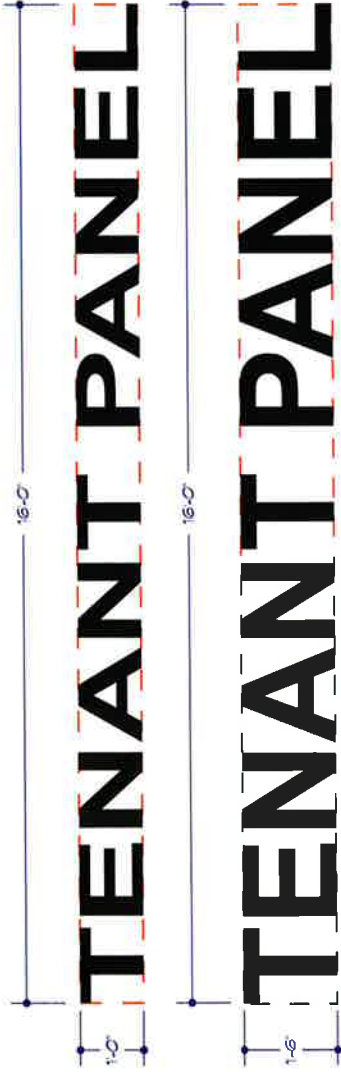
Building 10  
West Elev.

Scale: 1/8" = 1'-0"



Scale: 1/16" = 1'-0"





**REVERSE PAN CHANNEL ALUMINUM LETTERS**

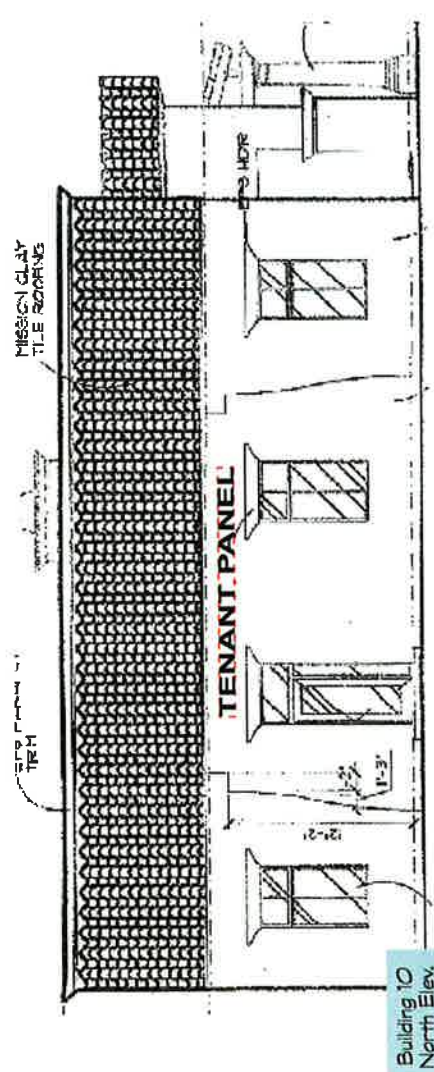
Scale: 1/2" = 1'-0"

Fabricate & install R.P.C. non-illuminated 1" deep aluminum letters painted MAP Black Anodic 41-395.

OPTION 1

Fabricate & install R.P.C. halo-illuminated letters with 3" deep returns & G500 white 30ma neon, allowed with Town of Gilbert & landlord approval.

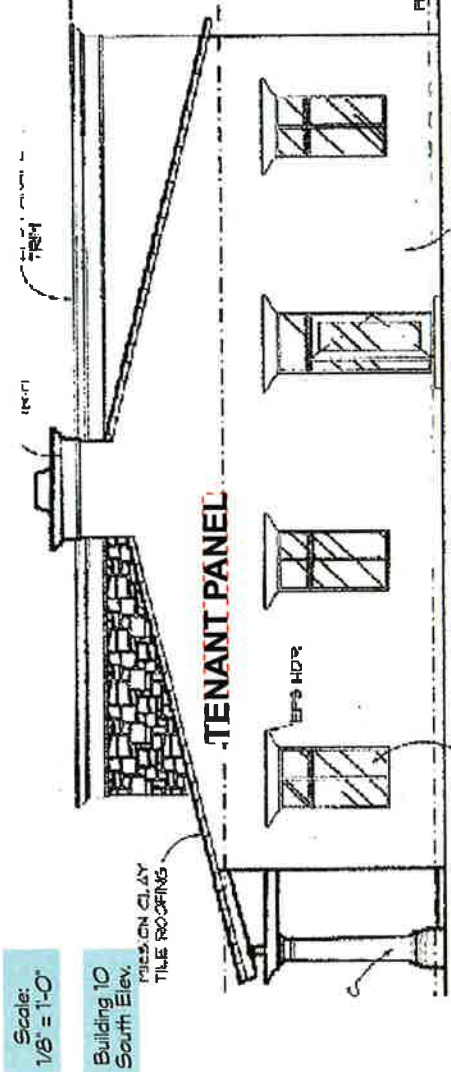
OPTION 2



Building 10 North Elev.

Scale: 1/8" = 1'-0"

Building 10 South Elev.



Scale: 1/8" = 1'-0"



Client: Higley Park Professional Village

Location: Higley & Ray Gilbert, AZ



2631 N. 31st Ave.  
Phoenix, AZ 85009  
Phone: 602-278-6286  
Fax: 602-278-0234  
E-mail (Art Dept): royalrgb@royalrgb.net

- Sales Representative: Dennis Plarlin
- Email: dennis@royalrgb.net
- Drawing #: 2201.012-020
- Date: 24 FEB 05
- Designer: L. Hart
- Checked By: RKP
- Contract #: 05-0430
- Kabel

The design professional hereby certifies that the design shown on this drawing is the design of the design professional or under the direct supervision and control of the design professional. The design professional is not responsible for any errors or omissions on this drawing. The design professional is not responsible for any construction methods or materials not shown on this drawing. The design professional is not responsible for any construction methods or materials not shown on this drawing. The design professional is not responsible for any construction methods or materials not shown on this drawing.

Scale: 1/2" = 1'-0"

Drawing Number: 05-0430

Client:  
Highly Park  
Porter-Leona Village

Location:  
Highway 8 & Ray  
Gilbert, AZ



2831 N. 31st Ave.  
Phoenix, AZ 85009  
602.278.9288  
L: 602.278.9288  
E: roydesign@royalpin.net

1-800-451-1000

Sales Representative:  
Derrita Martin

EP-Mail:  
derrita@royalpin.net

Drawing or Revision Code:  
27 SEPT 04

Drawn By:  
L. Hart

Revised By:

Form Used:  
Kabel

Approved Signature:

Date:

Scale:

Sheet Title:

THIS DOCUMENT IS THE PROPERTY OF ROYAL PIN ARCHITECTURE, INC. AND IS NOT TO BE REPRODUCED OR TRANSMITTED IN ANY FORM OR BY ANY MEANS, ELECTRONIC OR MECHANICAL, INCLUDING PHOTOCOPYING, RECORDING, OR BY ANY INFORMATION STORAGE AND RETRIEVAL SYSTEM, WITHOUT THE WRITTEN PERMISSION OF ROYAL PIN ARCHITECTURE, INC. COMPANY: ROYAL PIN ARCHITECTURE, INC. ADDRESS: 2831 N. 31ST AVENUE, PHOENIX, AZ 85009. PHONE: 602.278.9288. FAX: 602.278.9289. E-MAIL: ROYDESIGN@ROYALPIN.NET

Location

Scale:  
1/2" = 1'-0"

Drawing Number

04-1845

REVERSE PAN CHANNEL  
ALUMINUM LETTERS

Scale:  
1/2" = 1'-0"

Fabricate & install R.P.C. non-illuminated 1" deep aluminum letters painted MAP Black. Anodic 41-335.

Fabricate & install R.P.C. non-illuminated letters with 3" deep returns & 6500 white 30ma neon, allowed with Town of Gilbert & landlord approval.

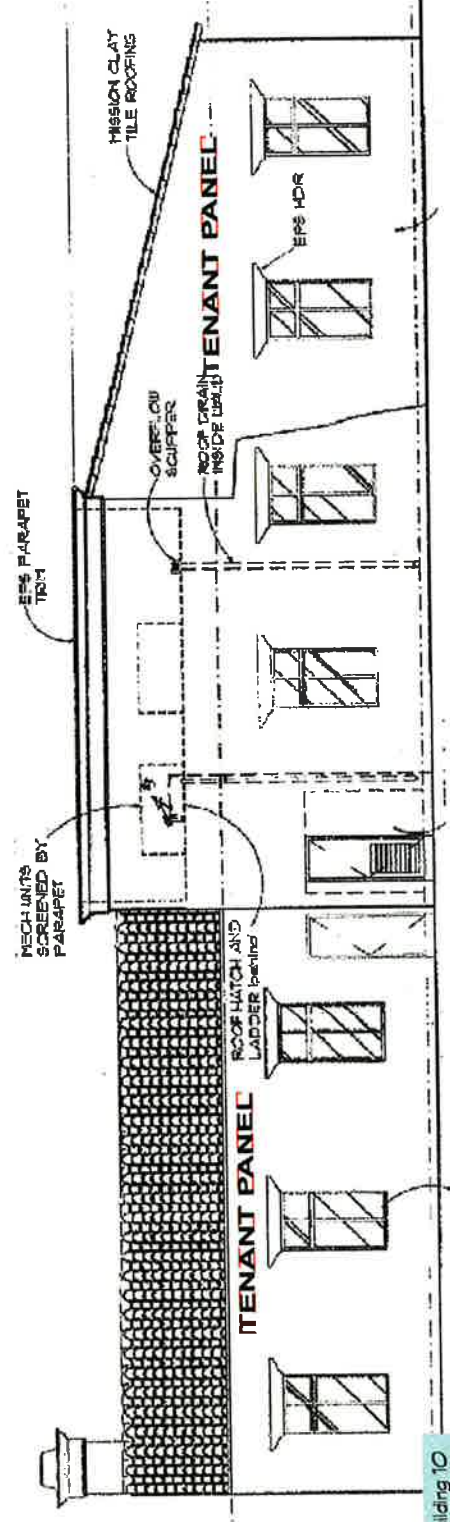
OPTION

OPTION

# TENANT PANEL

16'-0"

1'-0"



Building 10  
East Elev.

Scale:  
1/8" = 1'-0"



Scale:  
1/8" = 1'-0"

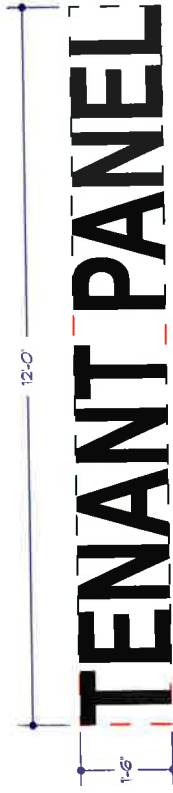




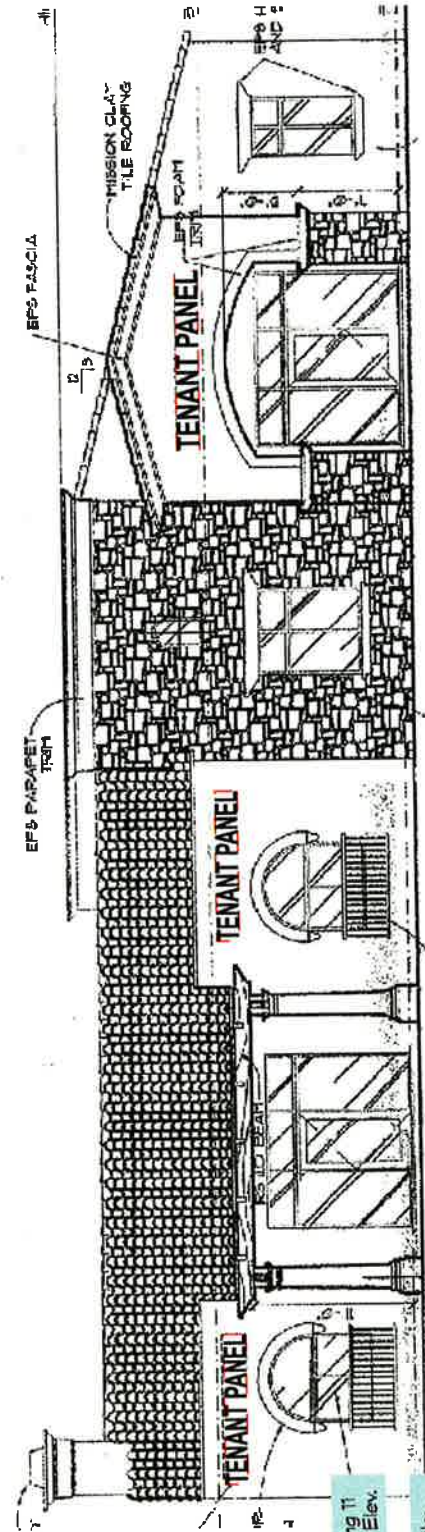
**REVERSE PAN CHANNEL ALUMINUM LETTERS**

Scale: 1/2" = 1'-0"

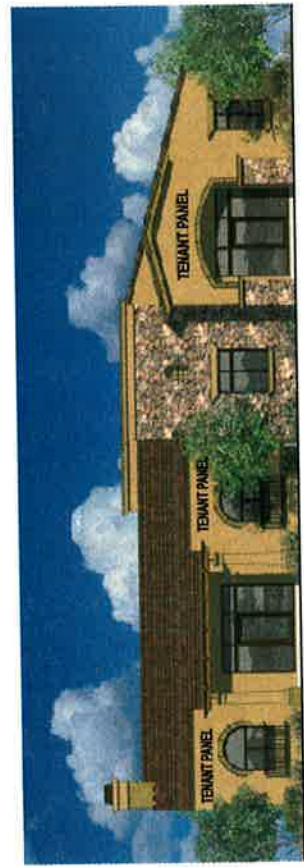
Fabricate & install R.P.C. non-illuminated 1" deep aluminum letters painted MAP Black Anodic 41-335.



Fabricate & install R.P.C. halo-illuminated letters with 3" deep returns & 6500 white 30mc neon, allowed with Town of Gilbert & landlord approval.



Building T1 South Elev.  
Scale: 1/8" = 1'-0"



Scale: 1/16" = 1'-0"

Client: Higley Park Professional Village

Location: Higley & Ray Gilbert, AZ



3031 N. 31st Ave. Phoenix, AZ 85009  
602-978-4888  
Fax: 602-978-4888  
Email: (AZ) Dept: royalsign@royalsign.net

Sales Representative: Dennis Martin

E-Mail: dennis@royalsign.net

Drawing or Revision Date: 27 SEPT 04

Drawn By: L. Hart

Revised By:

Project Name: Kebab

Approved Signature:

Checked:

Reviewed:

Approved:

Notes:  
1. See drawing T1 for sign location.  
2. Sign to be installed on existing structure.  
3. Sign to be illuminated with 30mc neon.  
4. Sign to be approved by Town of Gilbert & landlord.  
5. Sign to be approved by City of Gilbert.  
6. Sign to be approved by City of Phoenix.  
7. Sign to be approved by City of Scottsdale.  
8. Sign to be approved by City of Tempe.  
9. Sign to be approved by City of Chandler.  
10. Sign to be approved by City of Mesa.  
11. Sign to be approved by City of Gilbert.  
12. Sign to be approved by City of Kingman.  
13. Sign to be approved by City of Flagstaff.  
14. Sign to be approved by City of Sedona.  
15. Sign to be approved by City of Prescott.  
16. Sign to be approved by City of Yuma.  
17. Sign to be approved by City of Pinal County.  
18. Sign to be approved by City of Maricopa County.  
19. Sign to be approved by City of Pima County.  
20. Sign to be approved by City of Cochise County.

Sheet Title: Location

Scale: 1/2" = 1'-0"

Drawing Number: 04-1849

Client:  
Haley Park  
Perrisland Village

Location:  
Haley Park  
Gilbert, AZ



2851 N. 31st Ave.  
Phoenix, AZ 85009  
602-279-4288  
fax: 602-279-7224  
royalrgbco@royalrgbco.net

www.royalrgbco.net

- Special Requirements:**
- Dennis Martin
- 602-279-4288
- dennismartin@royalrgbco.net
- Working on: **July 2018 Design**
- 27 SEPT 04
- Golden Sky
- L. Hart
- 602-279-4288
- Form Used:
- Kabel

- Approved Suppliers:**
- Color:
- Material:
- Color:
- Material:

1. The building is a two-story structure with a prominent stone facade on the upper level and a lighter-colored facade on the lower level. The stone facade is composed of irregular, light-colored stones. The lower level features a series of windows with dark frames and a central entrance with a small porch. The roof is a gabled structure with a dark finish. The building is surrounded by a well-maintained lawn and some trees.

Sheet Title  
**Location**

Scale:  
1/2" = 1'-0"

Drawing Number

**04-1850**

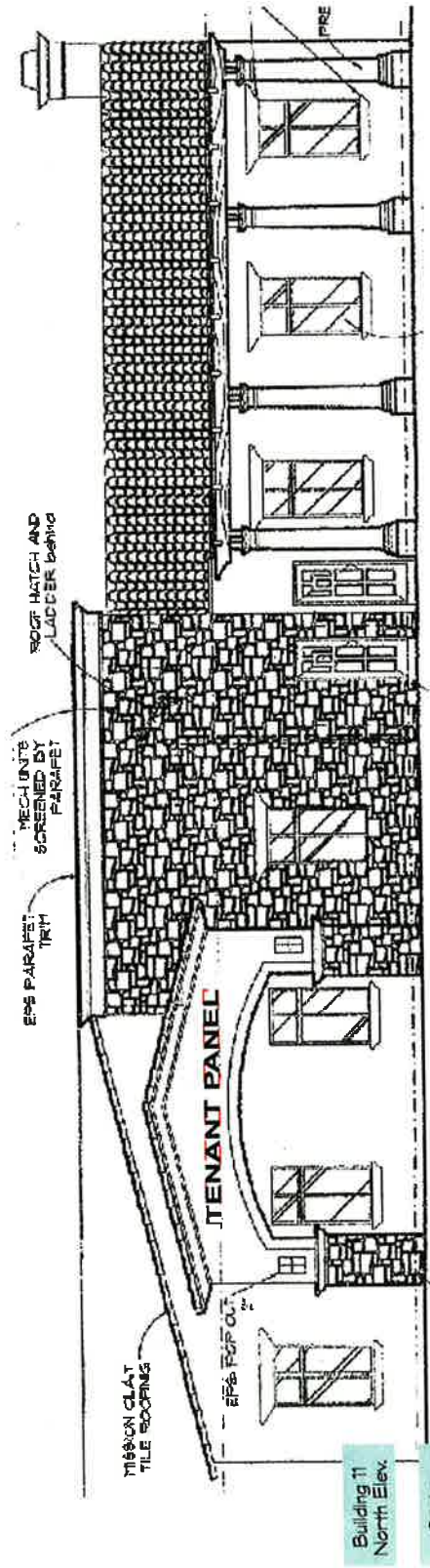
**REVERSE PAN CHANNEL ALUMINUM LETTERS**

Scale: 1/2" = 1'-0"

Fabricate & install R.P.C. non-illuminated 1" deep aluminum letters painted M14D Black Anodis 41-335.



Fabricate & install R.P.C. halo-illuminated letters with 3" deep returns & 6500 white 30ma neon, allowed with Town of Gilbert & landlord approval.



Building 11  
North Elev.

Scale: 1/8" = 1'-0"



Scale: 1/16" = 1'-0"



Client:  
Higley Park  
Parthenaidon Village

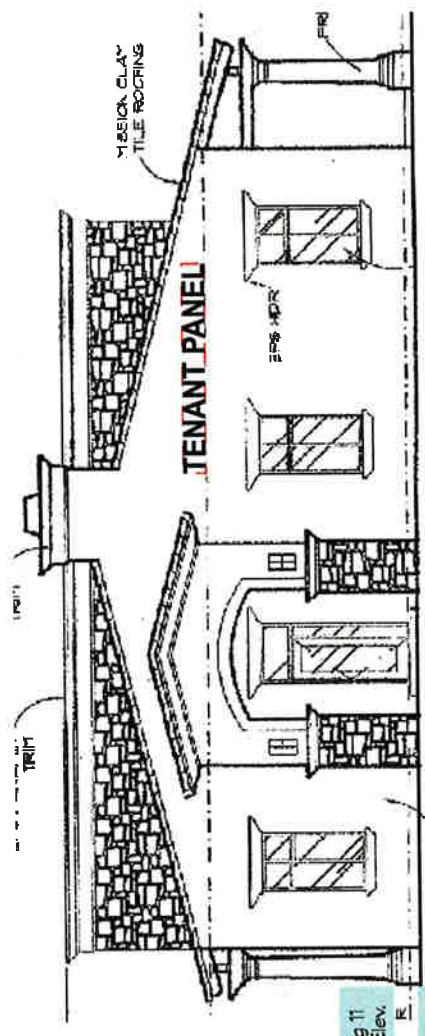
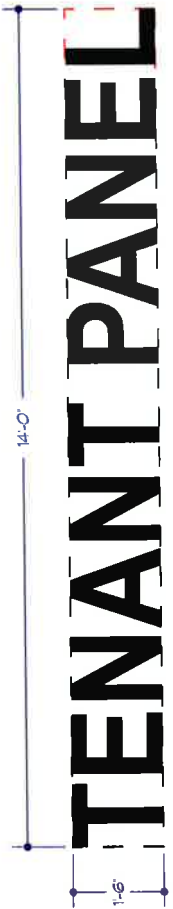
Scale:  
1/2" = 1'-0"

REVERSE PAN CHANNEL  
ALUMINUM LETTERS

Fabricate & install R.P.C. non-illuminated T deep aluminum letters painted MAP Black Anodic 41-335.



Fabricate & install R.P.C. halo-illuminated letters with 3" deep returns & 6500 white 30ma neon, allowed with Town of Gilbert & landlord approval.



Building 11  
West Elev.

Scale:  
1/8" = 1'-0"



Scale:  
1/16" = 1'-0"

- Client: Dennis Martin
- Address: 2831 N. 31st Ave. Phoenix, AZ 85009
- Phone: 602-278-4286
- Fax: 602-278-0234
- E-mail: jart@jart.com
- Website: www.jart.com

- Project: 04-1851
- Location: Gilbert, AZ
- Contractor: J.A. Jones Construction
- Architect: J.A. Jones Construction
- Interior Designer: J.A. Jones Construction
- Signage Designer: J.A. Jones Construction
- Signage Installer: J.A. Jones Construction

1. The purpose of this drawing is to show the location and dimensions of the sign on the building facade. The sign is a large, illuminated 'T' shape. The drawing includes labels for 'MISSION CLAY TILE ROOFING', 'EPS XPS', and 'FIBER'. A scale of 1/8" = 1'-0" is provided.

Scale:  
1/2" = 1'-0"

Location  
Drawing Number

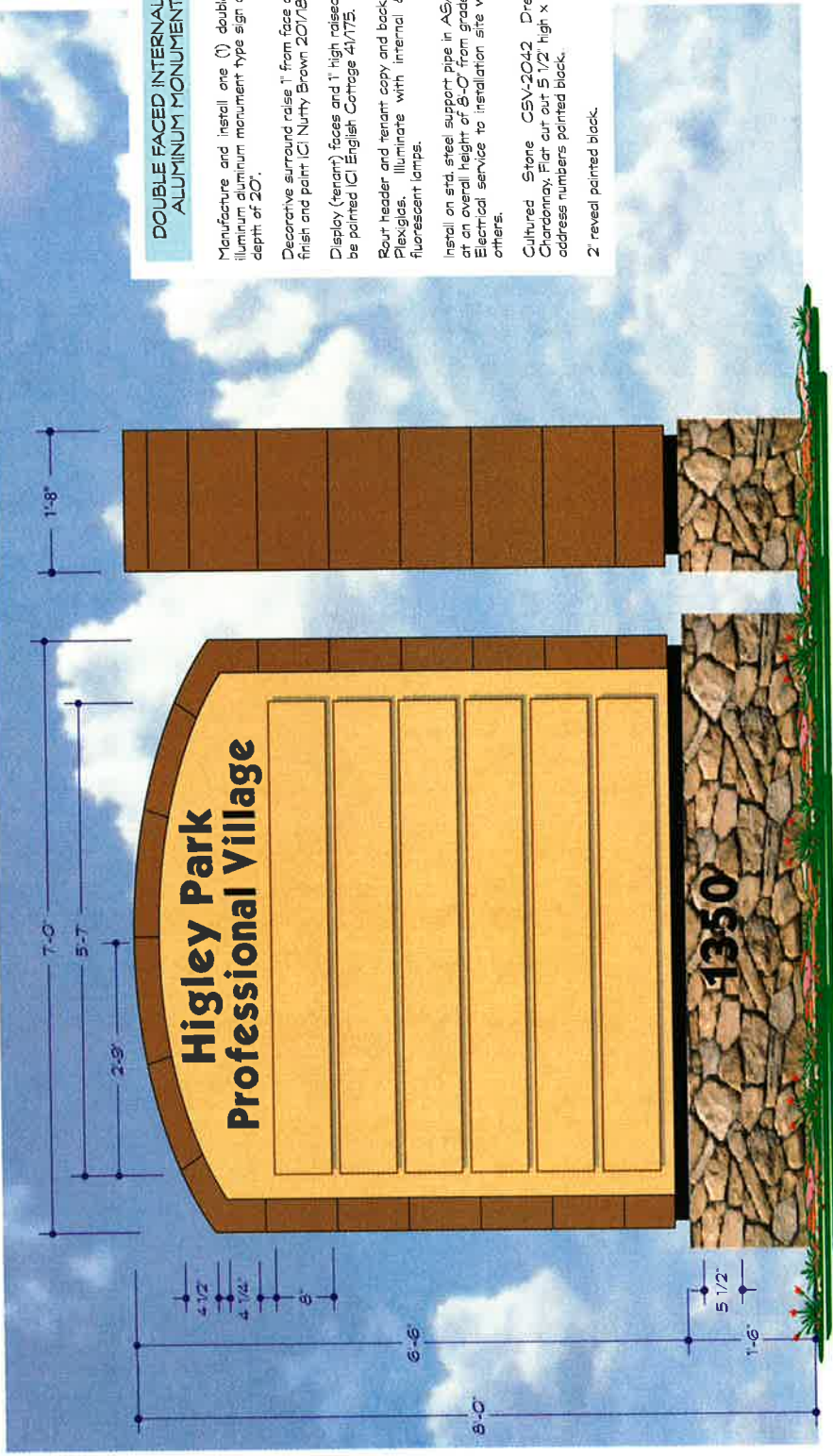
04-1851



- Design: Dennis Martin
- Drawn: dennis@royalsign.net
- Checked: 30 JAN 09
- Scale: L-Horiz
- Scale: L-Vert
- Scale: L-Depth
- Scale: L-Back
- Scale: L-Top

- Approved: [Signature]
- Date: [Blank]
- Scale: [Blank]
- Scale: [Blank]
- Scale: [Blank]

Notes:  
1. All dimensions are in feet and inches unless otherwise noted.  
2. All materials to be used shall be of the highest quality available.  
3. All materials shall be new unless otherwise noted.  
4. All materials shall be installed in accordance with the manufacturer's instructions.  
5. All materials shall be installed in accordance with the applicable building codes.  
6. All materials shall be installed in accordance with the applicable fire codes.  
7. All materials shall be installed in accordance with the applicable electrical codes.  
8. All materials shall be installed in accordance with the applicable plumbing codes.  
9. All materials shall be installed in accordance with the applicable mechanical codes.  
10. All materials shall be installed in accordance with the applicable health and safety codes.



**B**

Scale:  
3/4" = 1'-0"

**DOUBLE FACED INTERNALLY ILLUM.  
ALUMINUM MONUMENT SIGNS**

Manufacture and install one (1) double faced internally illuminated aluminum monument type sign display with a filler depth of 2'-0".

Decorative surround raise 1" from face of display. Memtex finish and paint ICI Nurdy Brown 201/65.

Display (tenant) faces and 1" high raised tenant panels will be painted ICI English Cottage 41/75.

Rout header and tenant copy and back with Black/White Plexiglas. Illuminate with internal 800ma CW/HO fluorescent lamps.

Install on std. steel support pipe in ASA concrete footing at an overall height of 8'-0" from grade to top of display. Electrical service to installation site will be provided by others.

Cultured Stone CSV-2042 Dressed Fieldstone Chardonnay. Flat cut out 5 1/2" high x 1/4" thick aluminum address numbers painted black.

2" reveal painted black.



Client:

Higley Park  
Professional Village

Location:  
Higley & Ray  
Gilbert, AZ



2631 N. 31st Ave.  
Phoenix, AZ 85009  
602-278-6286  
fax: 602-278-0234  
E-mail (Art Dept):  
royalsign@royalsign.net

Sales Representative:  
Dennis Martin

E-Mail:  
dennis@royalsign.net

Drawing or Revision Date:  
20 JAN 05

Drawn By:  
L. Hart

Revised By:

Fonts Used:  
Kabel

Approval Signatures  
Client:

Landlord:

Sales:

Estimating:

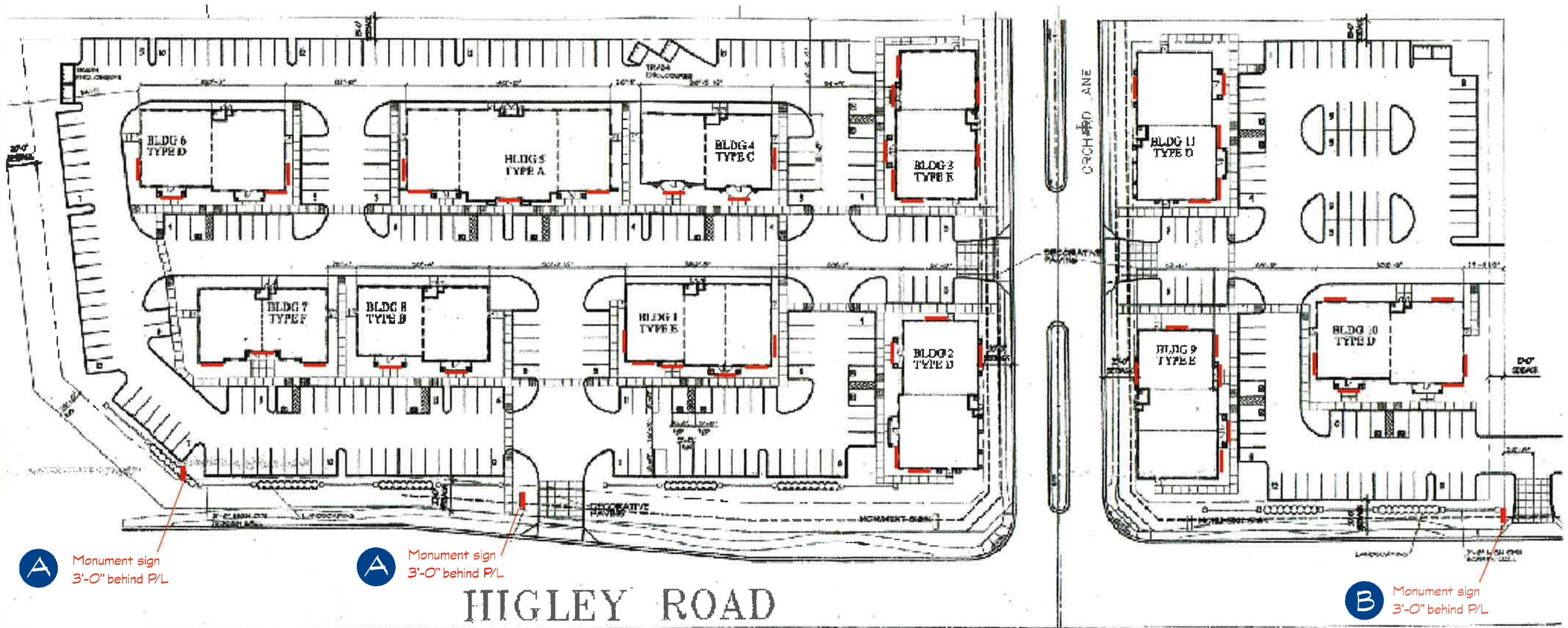
This original unpublished drawing is submitted solely for the project being planned. It is not to be copied or shown to persons outside of your organization without express written authorization from ROYAL SIGN COMPANY. All specified details on these drawings are subject to change due to the availability of materials and/or changes in the method of fabrication. ROYAL SIGN COMPANY will do their best to maintain the design intent of these drawings at all times. If the owner or owner's representative wishes to receive detail drawings on all changes during the fabrication process, ROYAL SIGN COMPANY must be advised in writing prior to the start of fabrication.

Sheet Title  
Location

Scale:  
1/2" = 1'-0"

Drawing Number

05-0153



A Monument sign  
3'-0" behind P/L

A Monument sign  
3'-0" behind P/L

B Monument sign  
3'-0" behind P/L

HIGLEY ROAD

APPROVED PLANS  
Design Review Board  
CASE: # DR05-11  
DATE: 3/10/05  
SUBJECT TO CONDITIONS OF APPROVAL