





---

# ExxonMobil

## *Fuels Marketing*

---

ARCHITEKTON

398 South Mill Ave. #301  
Tempe, Arizona 85281  
T 480.894.4637  
F 480.894.4638  
www.architekton.com

---

Comprehensive Master Sign Plan  
Submittal

Gilbert, Arizona

March 21, 2002 Revised

APPROVED PLANS  
Design Review Board  
CASE: # DRO-119  
DATE: 5/9/02  
SUBJECT TO CONDITIONS OF APPROVAL

# 1. Project Introduction

The Project Site is located at the southeast corner of Higley Road and Guadalupe Road in Gilbert, Arizona (See Figure 1 - Vicinity Map).

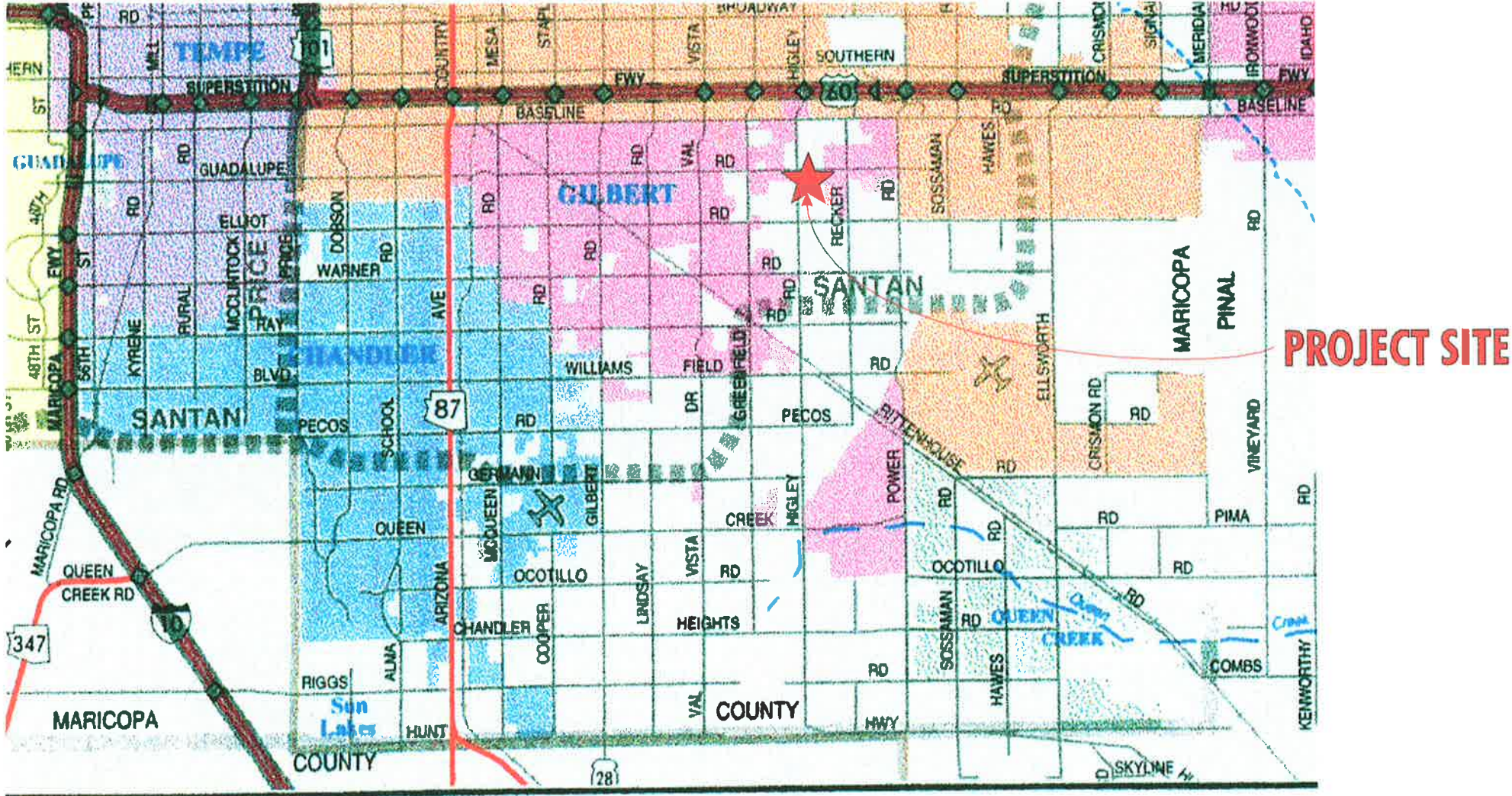


Figure 1 - Vicinity Map

## 2. Entire Project Site Plan

This project is a proposed development on approximately 7 acres. (See Figure 1 - Vicinity Map). This development proposal includes three parcels: Parcel 1-North parcel will be the Exxon Mobil Station with mini store and car wash. Parcel 2-Center parcel will be a retail tenant and Parcel 3-Southe parcel will be a Bank One with a drive up Teller/ATM facility.

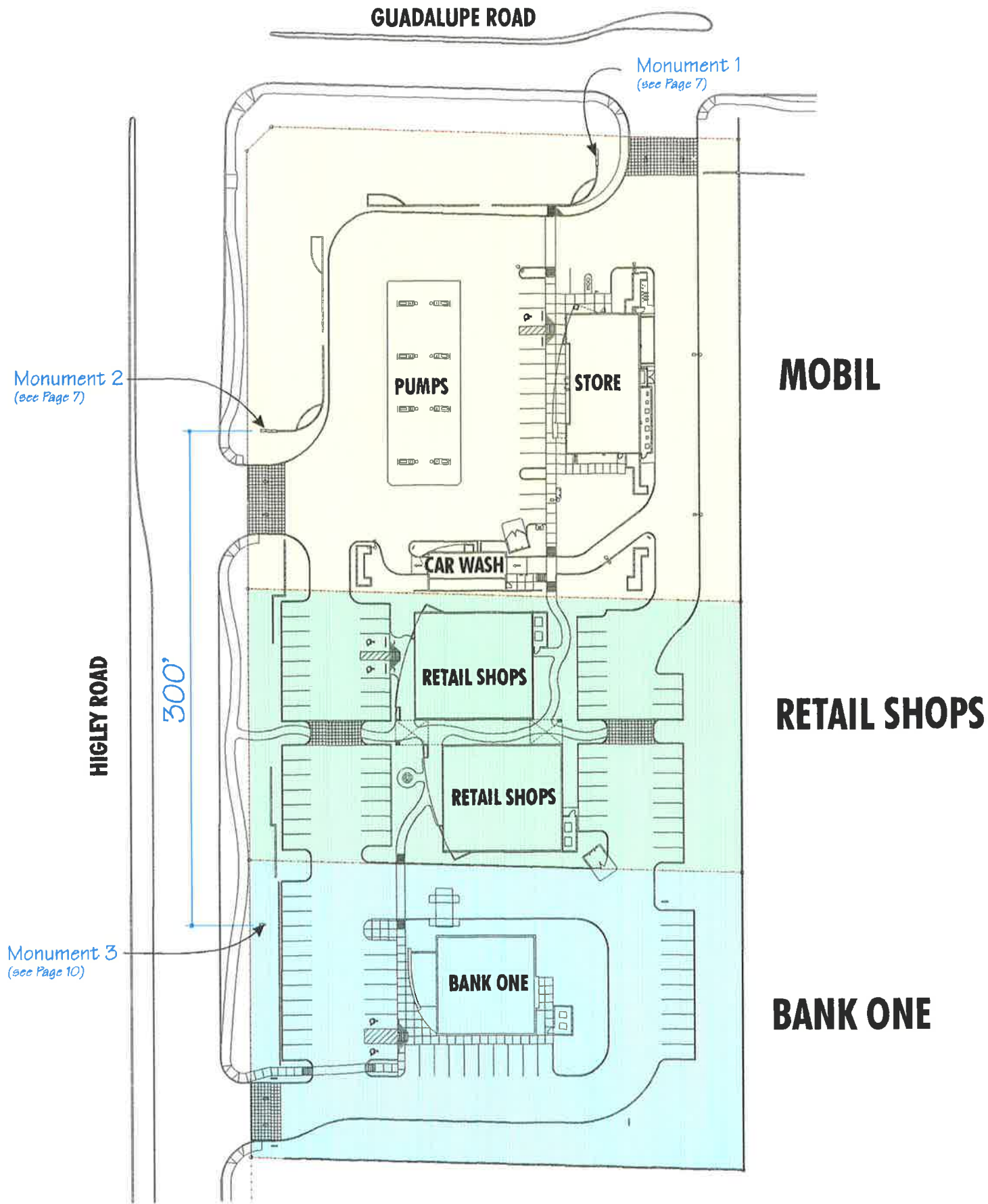


Figure 2 - Site Plan



## 2. Site Distance Visibility

Site visibility is plotted in yellow for D1 distance of 540' @ 45 mph posted speed limit.

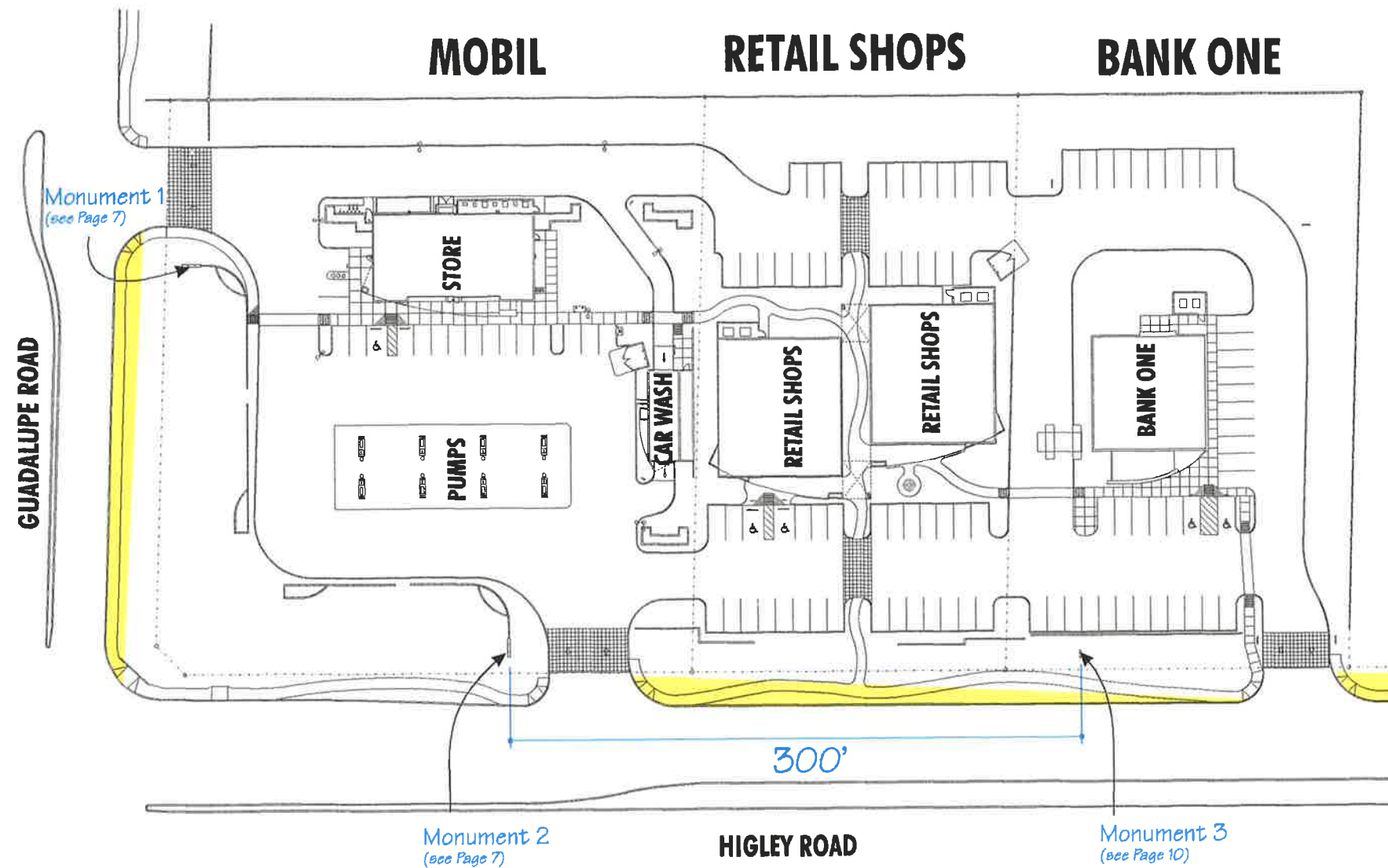
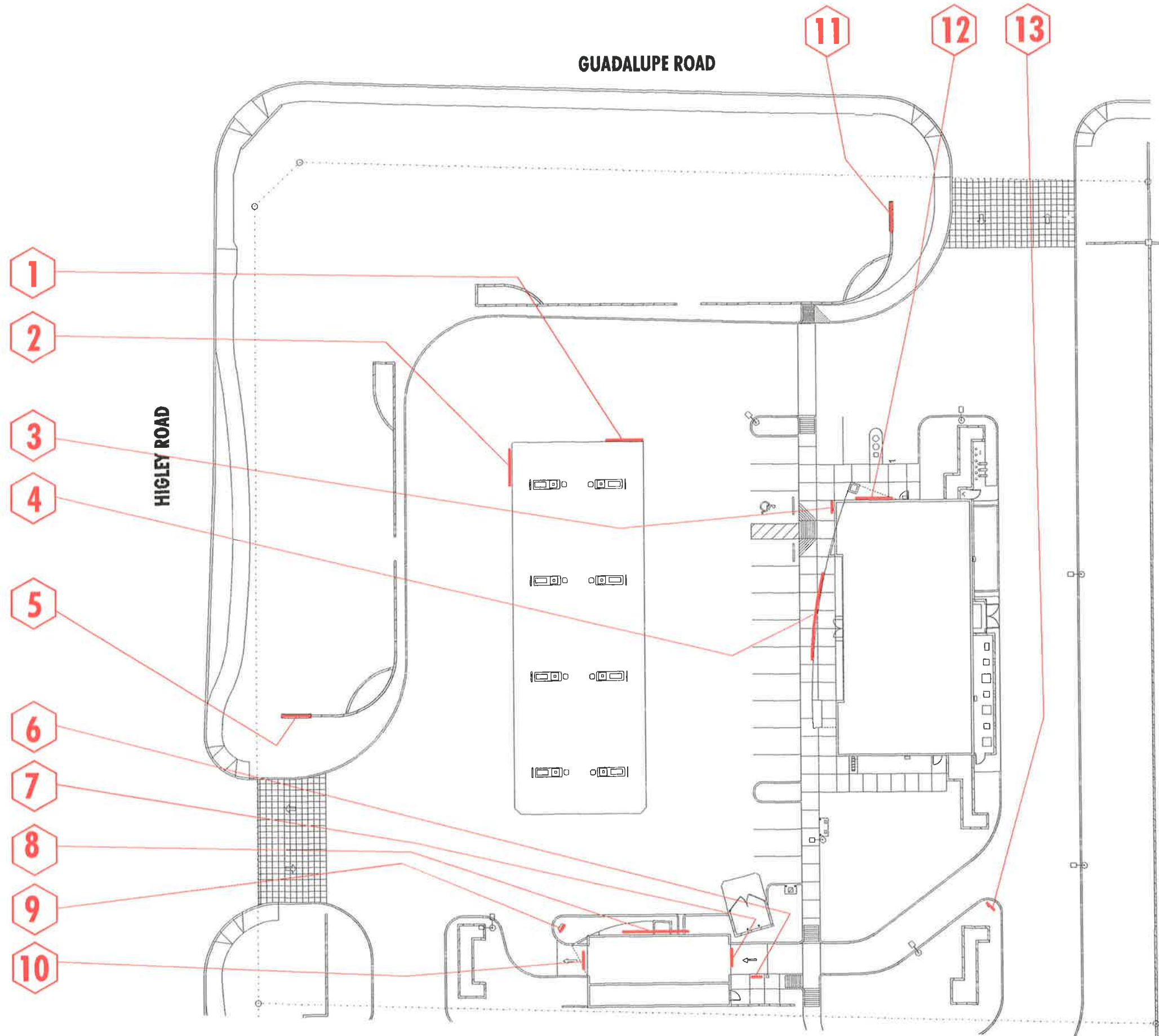


Figure 2 - Site Plan

### 3. Mobile Site Plan



LOCATION	SIGN DESCRIPTION
1	Canopy MOBIL Pegasas ID
2	Canopy MOBIL Pegasas ID
3	Standard DOT Handicapped Sign
4	ON THE RUN Logo ID
5	MOBIL Gas Reader Board ID
6	Car Wash Start Sign
7	ENTRANCE Copy
8	Touchfree Car Wash ID
9	Exit Sign
10	EXIT Copy
11	MOBIL Gas Reader Board ID
12	ON THE RUN Logo ID
13	Car Wash Directional

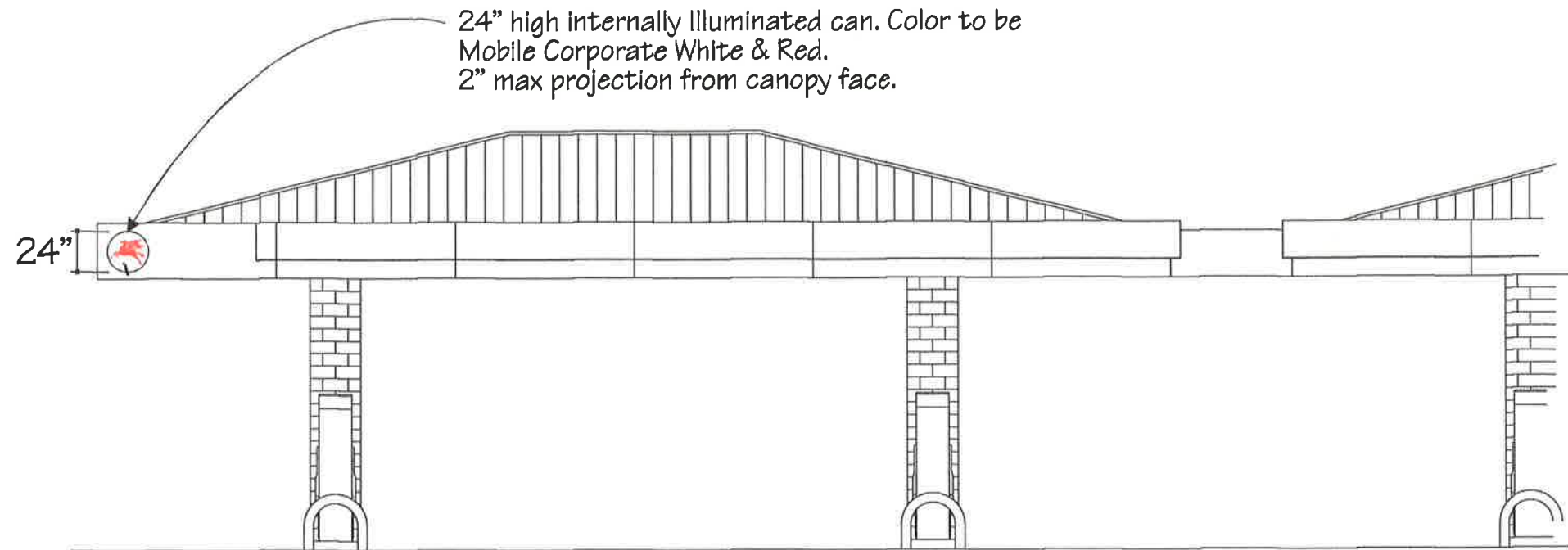
### 3. Canopy Sign identification

Canopy Logo Identification.

Sign Locations: 1 & 2

Signs will be individual face illuminated channel letters. Letters will have a 24" cap height. Maximum project from fascia canopy structure to be 2". Each sign will be 13.34 sq. ft. Total Square sign footage of canopy is 40.02 square feet.

AREA =  
NO LETTERS  
LOGO  
SIGN ONLY



EAST ELEVATION



SOUTH ELEVATION

3.14 sqft  
per sign



### 3. Car Wash Sign Identification

Car Wash Identification.

Sign Locations: 6, 7, 8, 9, 10 & 13

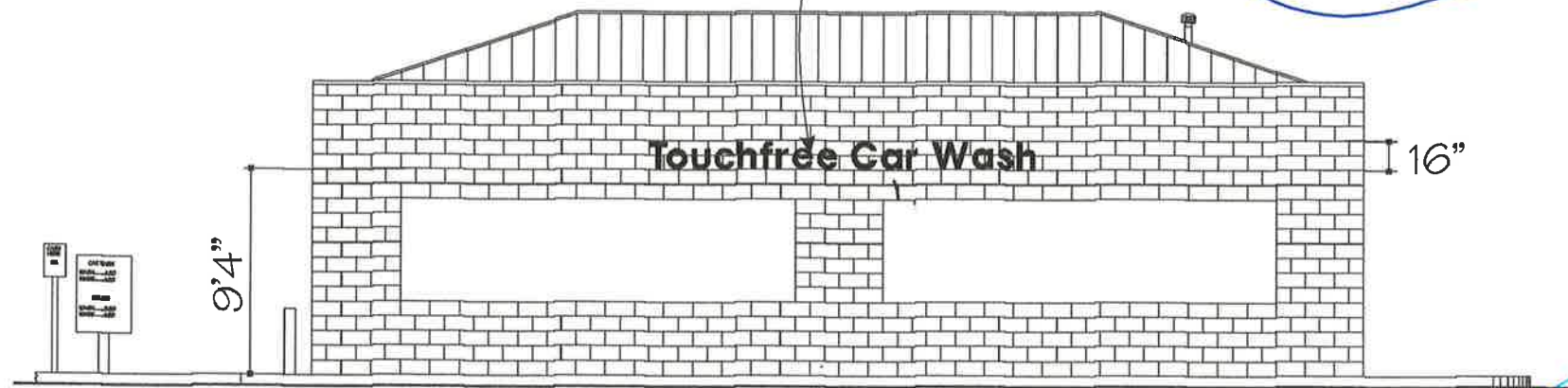
Signs will be individual letters. Letters will have an 8" cap height on the Entrance & Exit. Touchfree Car Wash will have a 16" cap height. Total Square sign footage of Cash Wash Building is 28.60 square feet.

Option 1:  
16" x 1/4" flat cut out aluminum letters. Color to be determine by Owner. Pin mounted Flush to block wall and set with an epoxy cement.

Option 2:  
16" internally illuminated channel letters. Color to be determine by Owner. Mounted flush to block wall and set with an epoxy cement.

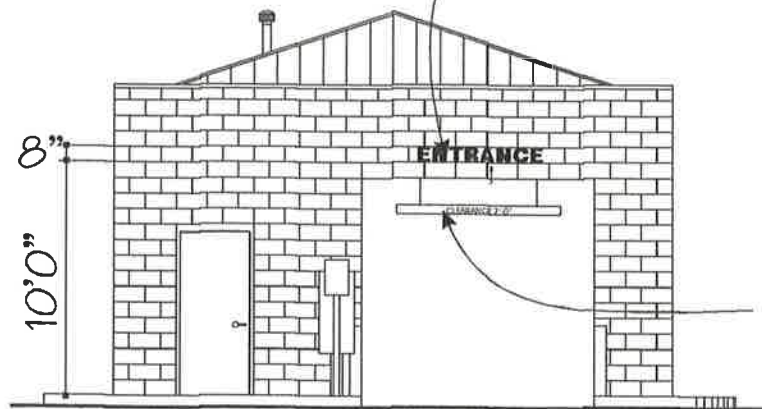
MUST BE ONE OF THE APPROVED COLORS ON THE COLOR BOARD

- MOBIL RED
- MOBIL BLUE
- BAKKONG BLUE
- BANK ONE GREY



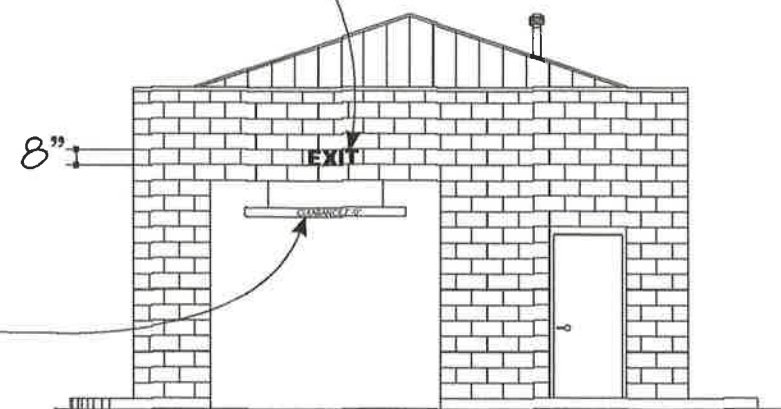
SOUTH ELEVATION

Option 1:  
8" x 1/4" flat cut out aluminum letters. Color to be determine by Owner. Pin mounted Flush to block wall and set with an epoxy cement.



WEST ELEVATION

Clearance Header bar to be specified by Owner.



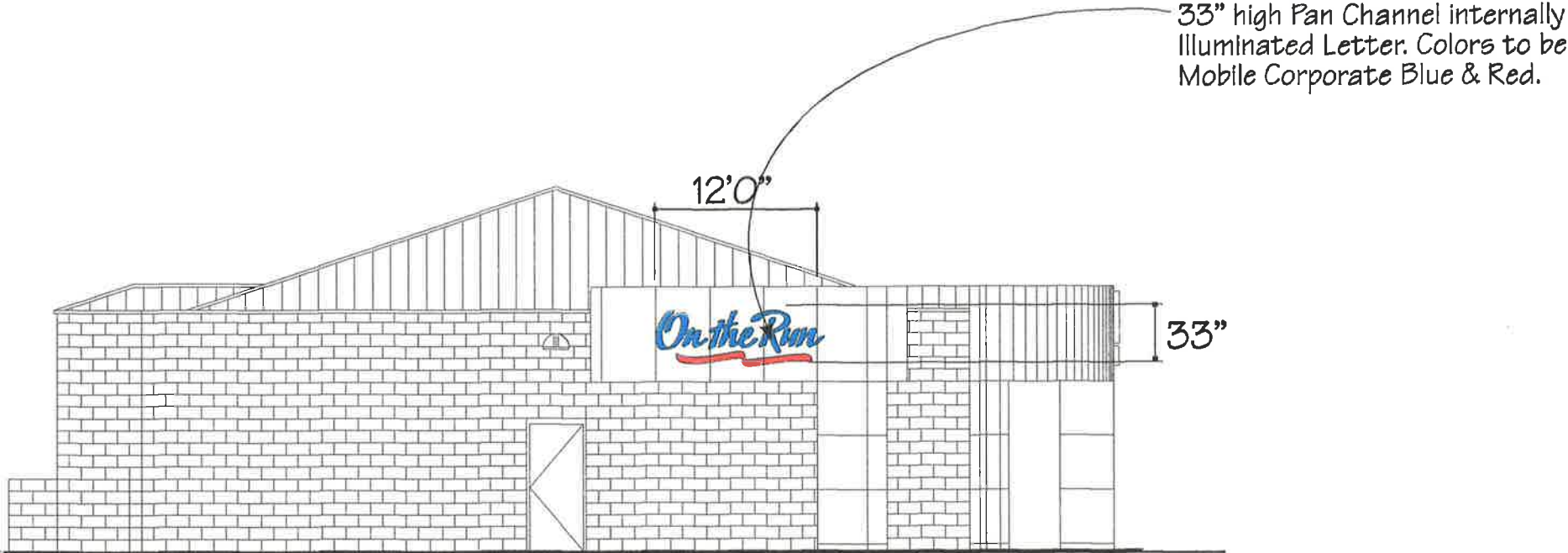
EAST ELEVATION

### 3. Store Sign Identification

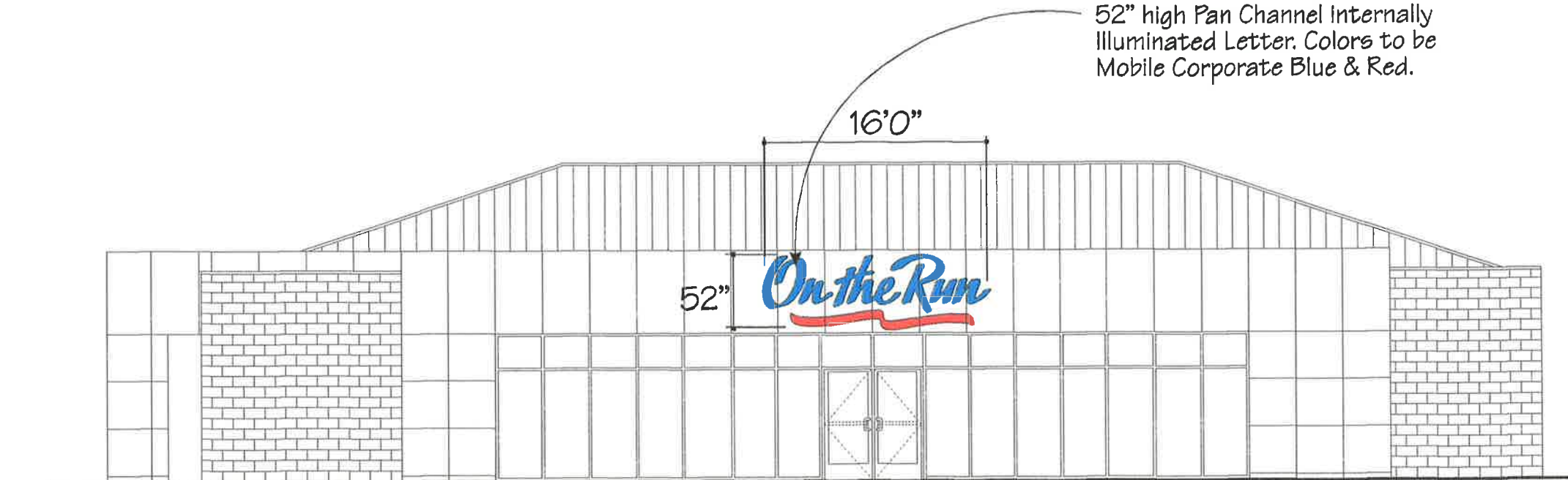
On The Run Store Logo Identification.

Sign Locations: 4 & 12

Signs will be individual face illuminated channel letters. Height of On the Run Logo on the South Elevation will be 33" overall height. Sign will be 22.92 sq. ft. Height of On the Run Logo on the East Elevation will be 52" overall height. Sign will be 55.25 sq. ft. Total Square sign footage of On the Run Store is 78.17 square feet.



SOUTH ELEVATION



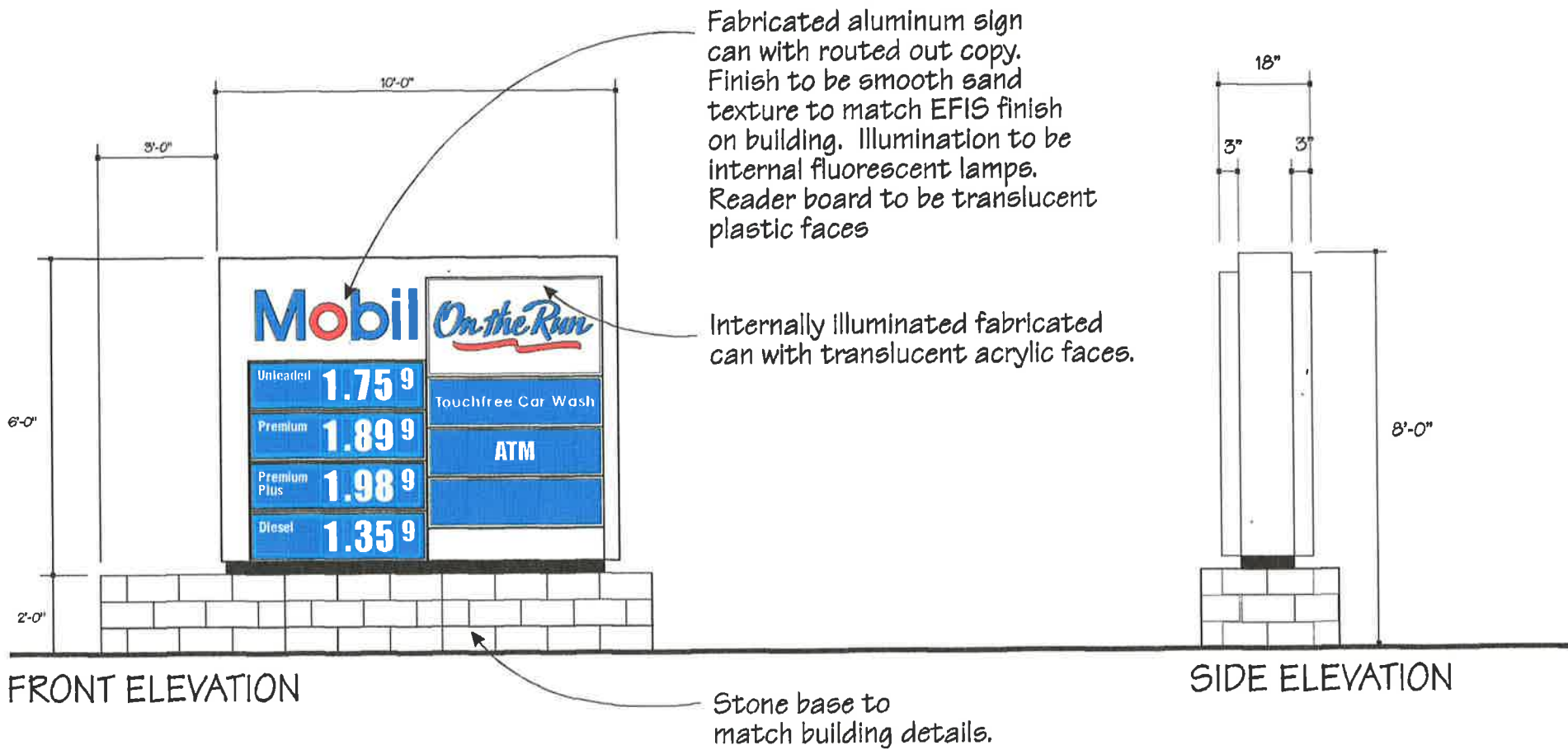
EAST ELEVATION

### 3. MOBIL Gas Reader Board Identification

MOBIL Gas/Reader Board Identification.

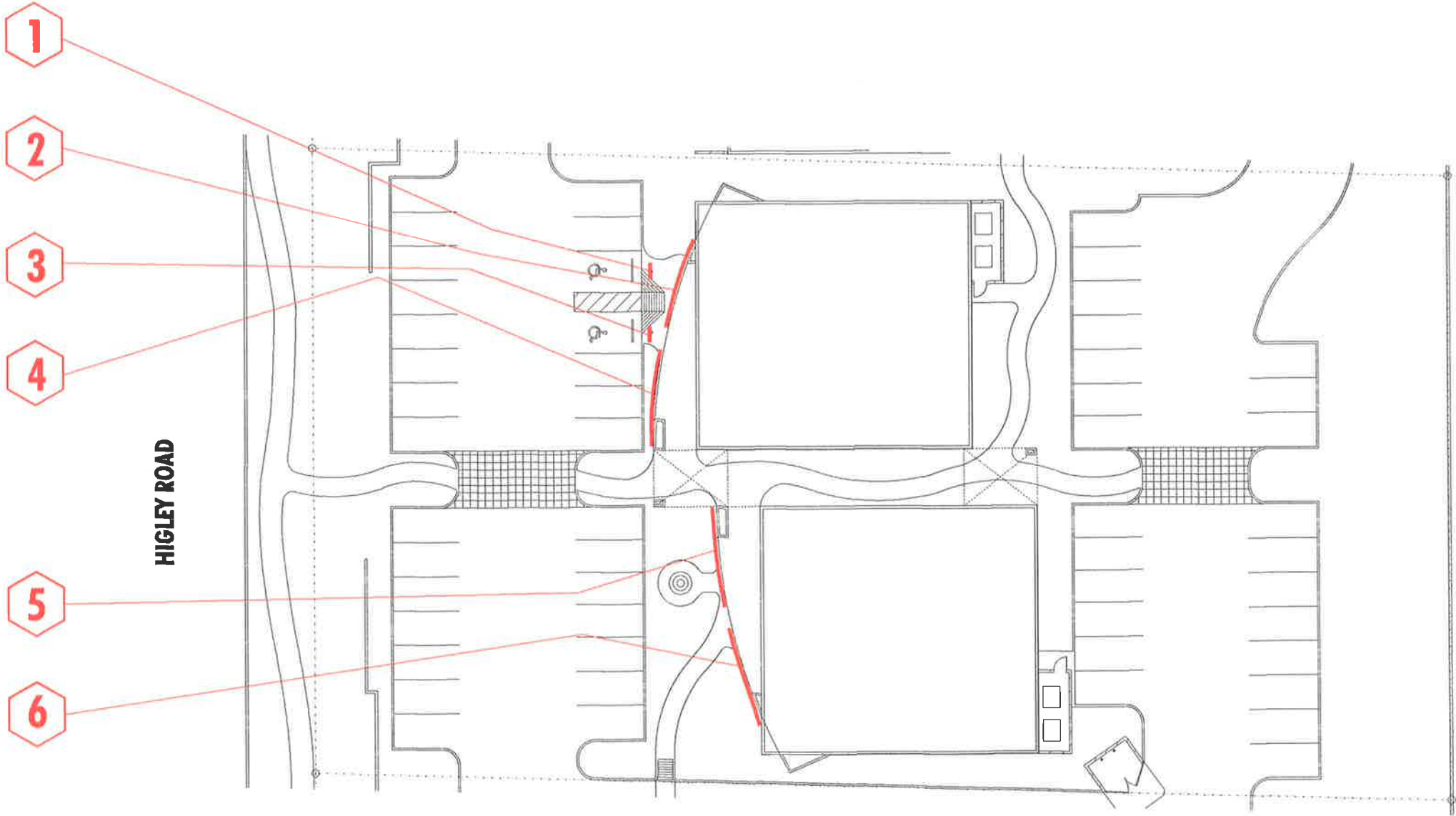
Sign Locations: 5 & 11

Signs will be internally illuminated fabricated cans with translucent graphic faces, each face will have a changeable gas reader board for gas pricing. Each sign will be 60.00 sq. ft. Total Square sign footage is 120.00 square feet.



# 4. Retail Stores Site Plan

LOCATION	SIGN DESCRIPTION
1	Standard DOT Handicapped Sign
2	Retail Tenant ID
3	Standard DOT Handicapped Sign
4	Retail Tenant ID
5	Retail Tenant ID
6	Retail Tenant ID

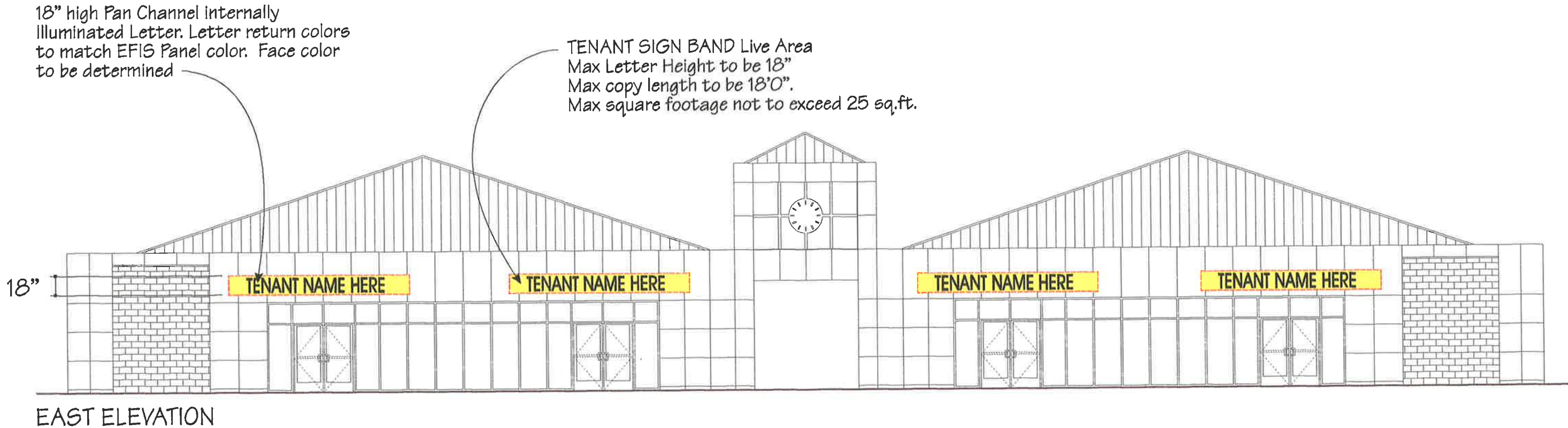


# 4. Retail Tenant Identification

Retail Tenant Identification.

Sign Locations: 2, 4, 6 & 7

Signs will be individual face illuminated channel letters. Height of each Tenant on the east elevation will have an 18" overall max. cap height.

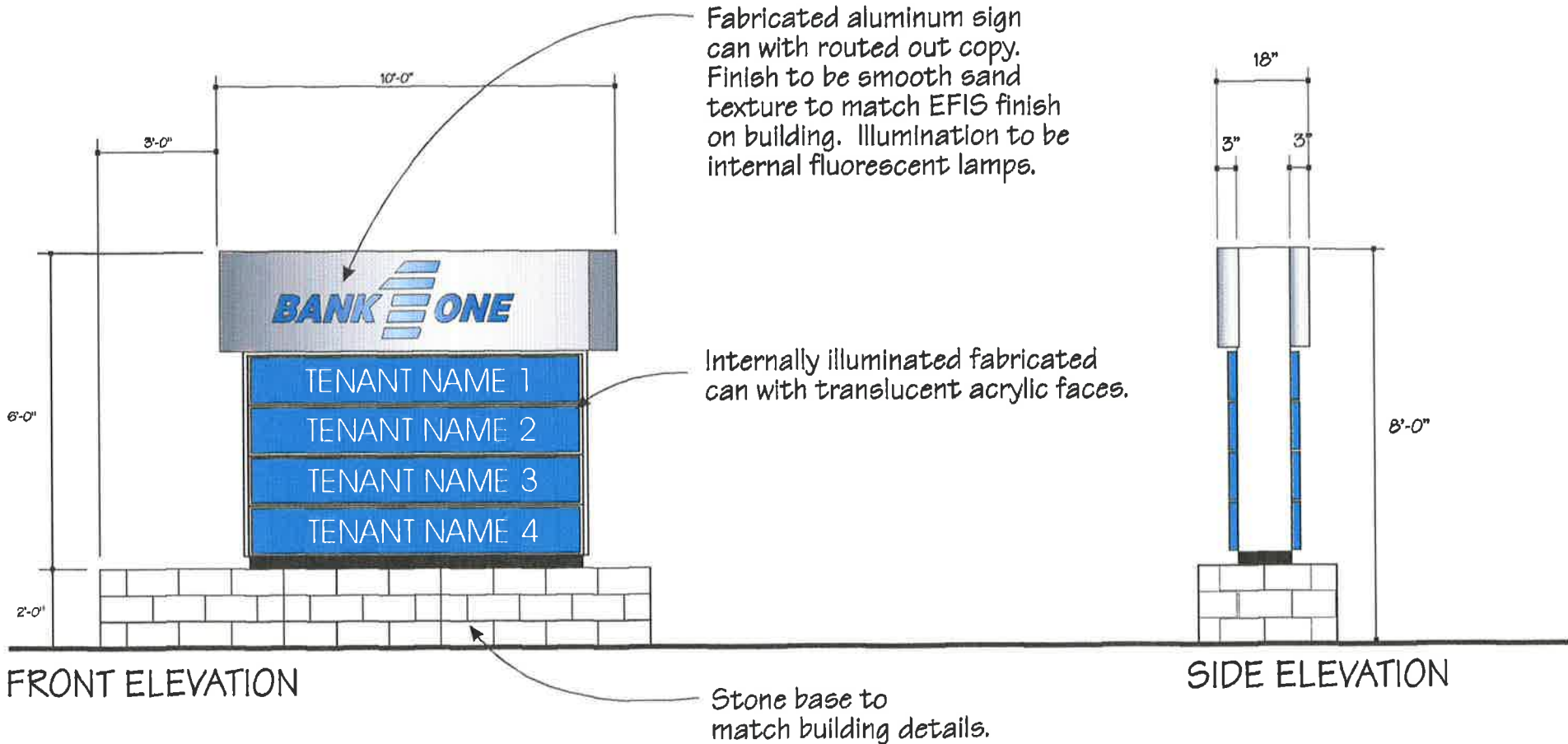


# 4. Multi-Tenant/BANK ONE Site Identification

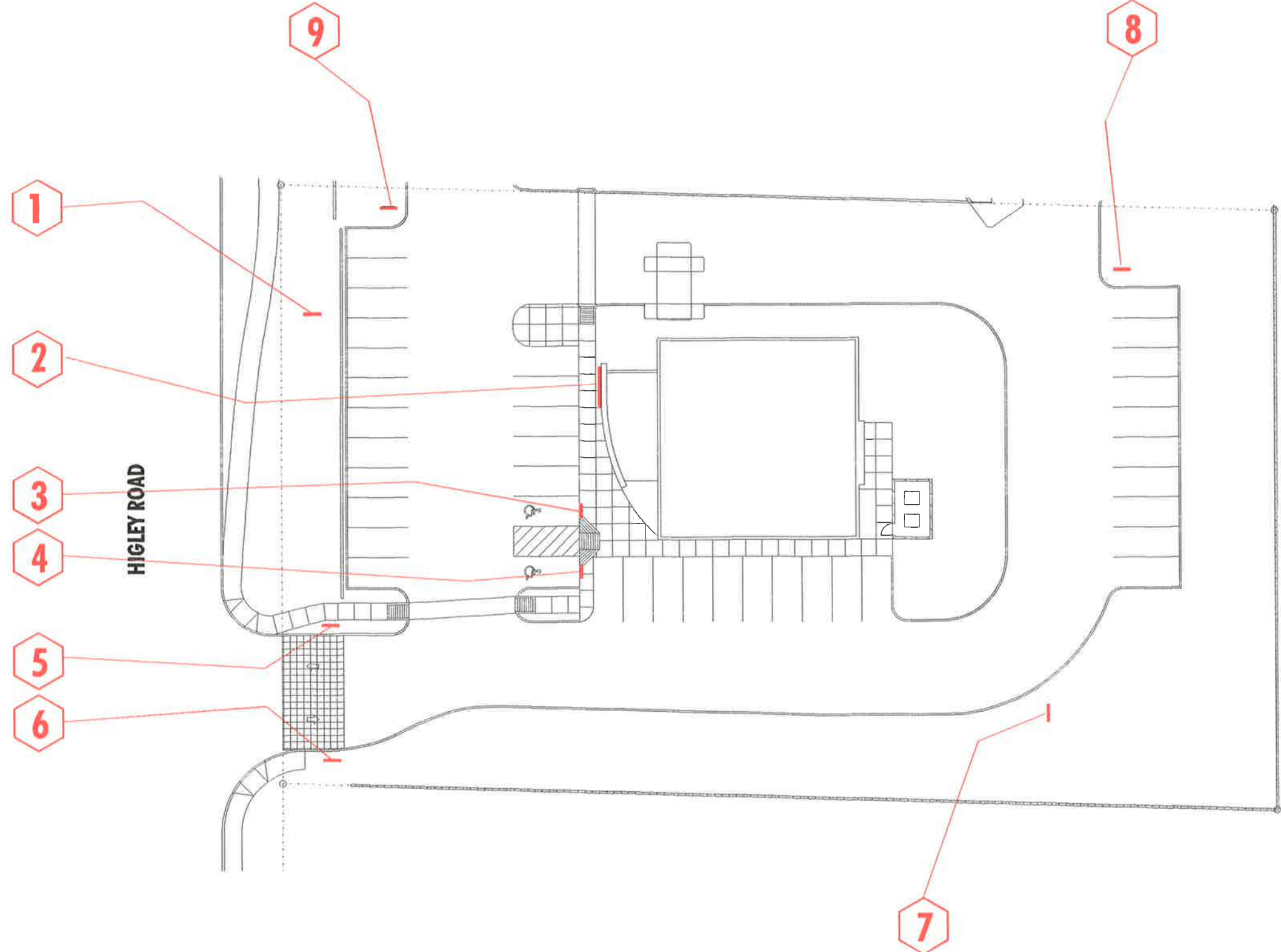
Site Multi-Tenant/BANK ONE Identification.

(See Page 11 BANK ONE SITE  
Sign Location: 1)

Sign will be internally illuminated fabricated doubled sided can with translucent graphic faces, sign will have a header panel with BANK ONE Identity and 4 retail tenant names. Sign will be 60.00 sq. ft.



# 5. Bank One Site Plan



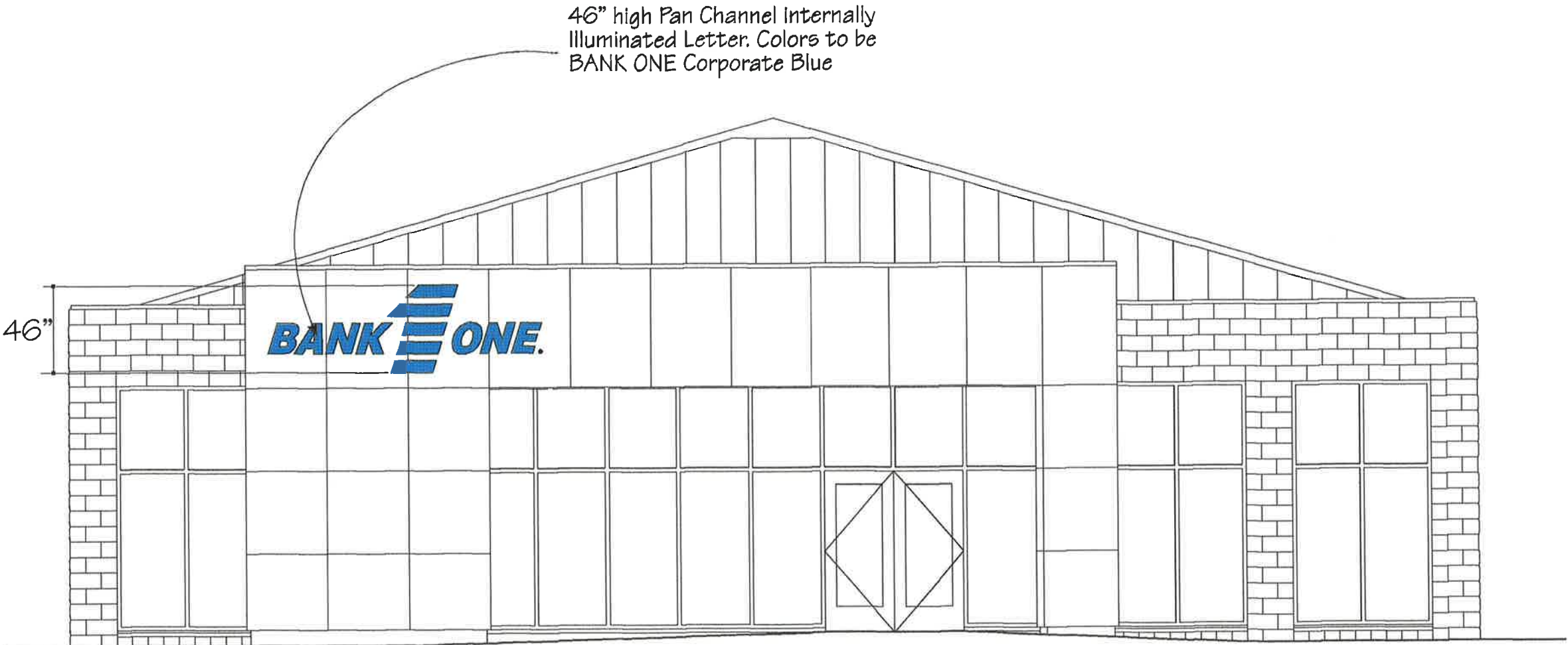
LOCATION	SIGN DESCRIPTION
1	Multi-Tenant/BANK ONE Ground ID (See Page 10)
2	BANK ONE Building ID
3	BANK ONE Handicapped Sign
4	BANK ONE Handicapped Sign
5	BANK ONE Entrance Directional
6	BANK ONE Entrance Directional
7	BANK ONE ATM Directional
8	BANK ONE ATM Directional
9	BANK ONE ATM Directional

# 5. BANK ONE Building Identification

BANK ONE Logo Identification.

Sign Location: 1

Signs will be individual face illuminated channel letters. Height of the BANK ONE logo on the east Elevation will be 46" overall height. Sign will be 22.92 sq. ft.



EAST ELEVATION