



## NOTICE OF ADMINISTRATIVE DECISION

August 18, 2016

Todd Atkinson  
Sandstorm Signs and Service, Inc.  
1144 W. Birchwood Ave. #102  
Mesa, AZ 85210  
[todd@sandstormsign.com](mailto:todd@sandstormsign.com)

RE: Administrative Design Review **DR07-136-C (PAL16-49)**.

Dear Mr. Atkinson:

Staff has reviewed and **approved** your Administrative Design Review **DR07-136-C (PAL16-49)**, for an amendment to the existing Comprehensive Sign Plan (CSP) for Boston Professional Village, located on Val Vista Drive just southeast of Williams Field Road. The subject site is zoned Regional Commercial (RC).

A summary of the amendment to the existing CSP for Boston Professional Village is listed below:

- Wall signage changes consist of updating the CSP to allow the standards of the Land Development Code, Article 4.407, to be applied to the overall site and allow wall signage fonts and colors subject to Landlord and Association approval.
- Logo elements can be placed outside the existing sign envelopes shown in the CSP providing the sign fits proportionally with building massing and architectural features of the elevation.

Staff has **approved** your request with the following conditions:

1. Development shall be in general conformance with the Boston Professional Village Sign Program amendment, as administratively approved August 18, 2016.

If you have any questions regarding these findings, please contact me at (480) 503-6742.

Sincerely,

A handwritten signature in blue ink that reads "Tanya Castro".

Tanya Castro  
Planning Specialist  
Town of Gilbert

# BOSTON PROFESSIONAL VILLAGE

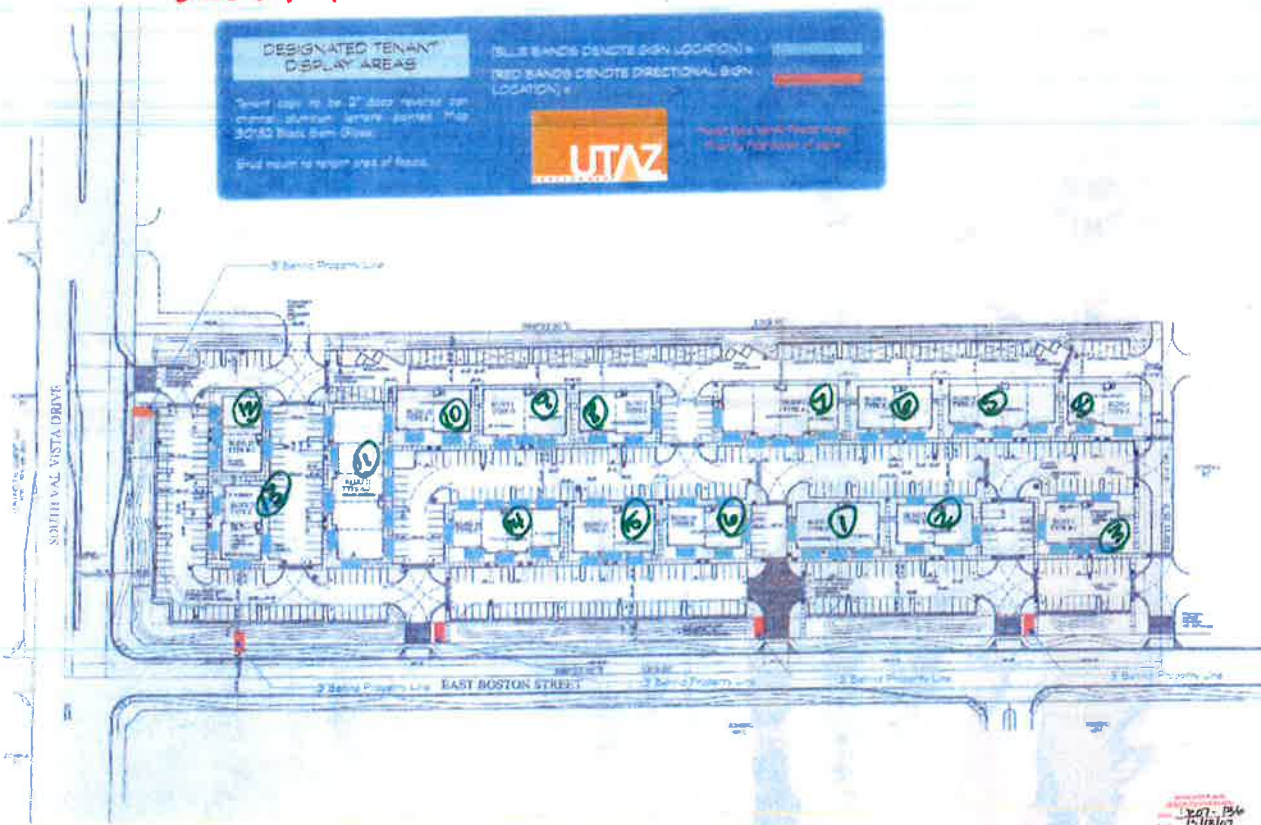
DR07-136

**DESIGNATED TENANT DISPLAY AREAS**  
 Tenant signs to be 2" high recessed on minimal aluminum letters mounted. They 30x30 Back Sign Only.  
 Sign must be within area of lease.

**(BLUE BANDS DENOTE SIGN LOCATION)**  
**(RED BANDS DENOTE DIRECTIONAL SIGN LOCATION)**

**UTAZ**  
 URBAN TRADING AND ZONING

PLEASE SEE SIGN DESIGN SHEET FOR DIMENSIONS OF SIGNS



Boston Professional Village

10 Years @ License @ 100000



2831 W. 31st Ave.  
 Phoenix, AZ 85009  
 602-278-6286  
 fax: 602-998-0841  
 E-mail: (Art) Dept: royalsign@royalsign.net

07-3443  
 07-3553

Bill Sweeney  
 City of Miami

denval@denval.com  
 12/08/07

- 5. Church
- 5. Church
- 5. Church
- 5. Church

Approve by Miami

Approve by Miami

Approve by Miami

Approve by Miami

Approve by Miami

Approve by Miami

Approve by Miami

Approve by Miami

Approve by Miami

Approve by Miami

07-3553

**APPROVED**  
 Administrative Design Review  
 Case Planner Initials: *DC*  
 Case # DR07-136-C  
 Date: 8/18/16

DR07-136-C (1st)

Boston Professional Village

16 Vento E Beator  
07-3572



3831 N. 21st Ave.  
Phoenix, AZ 85029  
602-275-4229  
Fax: 602-275-4234  
E-mail: Art.Display@royalsignco.com

07-3572  
07-3572

Design Number

Case #

12/03/07

S. Chumpe

S. Chumpe

S. Chumpe

S. Chumpe

S. Chumpe

S. Chumpe

S. Chumpe

S. Chumpe

S. Chumpe

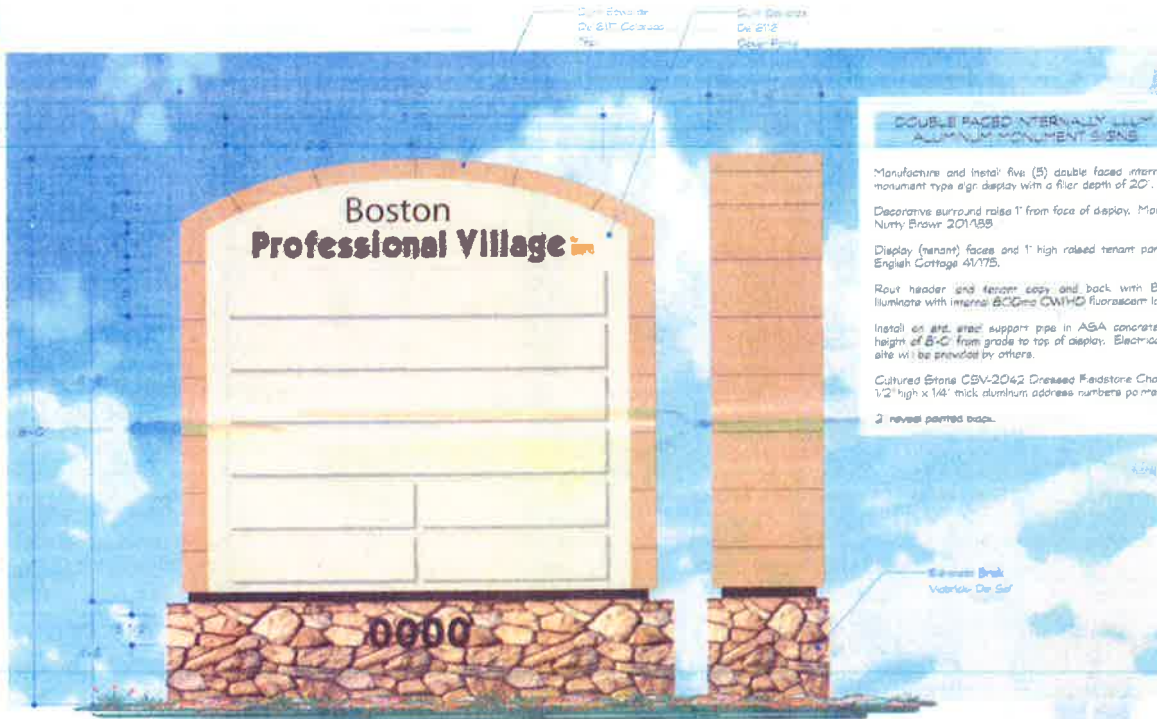
S. Chumpe

S. Chumpe

S. Chumpe

S. Chumpe

07-3572



DOUBLE FACED INTERNALLY ILLUMINATED MONUMENT SIGNS

Manufacture and install five (5) double faced internally illuminated aluminum monument type sign display with a filler depth of 20".

Decorative surround raise 1" from face of display. Moxex finish and paint ICI Nurty Brown 201158.

Display (tenant) faces and 1" high raised tenant panels will be painted ICI English Cottage 41175.

Rout header and tenant copy and back with Black/White Plexiglas illuminate with internal 800ma CWIHO fluorescent lamps.

Install an std. steel support pipe in ASA concrete footing at an overall height of 8'-0" from grade to top of display. Electrical service to installation site will be provided by others.

Cultured Stone CBV-20162 Dressed Fieldstone Chardonnay. Flat cut out 8 1/2" high x 14" wide aluminum address numbers painted black.

2 reveal painted base.

Cultured Stone  
Vento E Beator

12/07-136  
12/18/07

**APPROVED**

Administrative Design Review

Case Planner Initials: DC

Case # D207-136-C

Date: 8/18/11

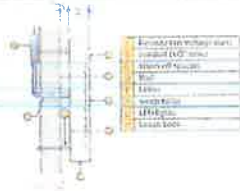
D207-136.c (102)

**DESIGNATED TENANT DISPLAY AREAS**

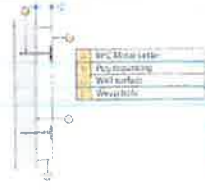
Signage shall be 36" x 72" minimum and placed in the designated areas outlined. Sign shall be placed in the designated areas of the building.

**UTAZ**

Non-Illuminated RPS - C Cross Section Detail



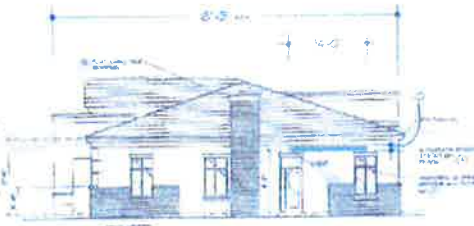
Non-Illuminated RPS - C Cross Section Detail



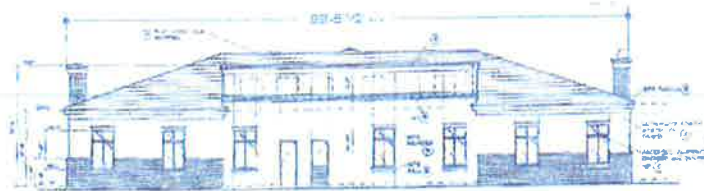
Building "Front" Building Type D Scale N.T.S.



Building South "Front" Building Type D Scale 1/16" = 1'-0"



Building East "Right" Building Type D Scale 1/16" = 1'-0"



Building North "Rear" Building Type D Scale 1/16" = 1'-0"



Building West "Left" Building Type D Scale 1/16" = 1'-0"

(BLUE BANDS DENOTE SIGN LOCATION) =

1107-BV  
12/15/07

Boston Professional Village

100 State Street, Boston, MA 02109



100 State Street, Boston, MA 02109  
Tel: 617-267-8222  
Fax: 617-267-8223  
www.royalslope.com

07-3554

- Sign & Plans
- Sign Installation
- Sign Fabrication
- Sign Maintenance
- Sign Removal
- Sign Relocation

- Sign & Plans
- Sign Installation
- Sign Fabrication
- Sign Maintenance
- Sign Removal
- Sign Relocation

07-3554

**APPROVED**  
Administrative Design Review  
Case Planner Initials: DC  
Case # D107-136-C  
Date: 8/18/11

D107-136-C(LW)



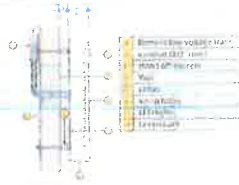


**DESIGNATED TENANT DISPLAY AREAS**

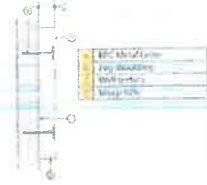
Signs shall be 18" x 24" unless otherwise noted. All signs shall be illuminated. All signs shall be illuminated. All signs shall be illuminated.

**UTAZ**

Remote Mounted RRK Letter / G.L.S. / Cross Section Detail



Non-Illuminated RRK / Cross Section Detail



Building "Front"      Building 7 Type A      Scale N.T.S.



Building South "Front"      Building 7 Type A      Scale 1/16" = 1'-0"



Building North "Rear"      Building 7 Type A      Scale 1/16" = 1'-0"

(BLUE BANDS DENOTE SIGN LOCATION) = █

Boston Professional Village  
100 North Street  
Boston, MA 02111  
Tel: 617-552-2211  
E-mail: (Art Dept): royal@sign.com

**ROYAL SIGN CO.**

100 N. State Ave.  
Boston, MA 02111  
Tel: 617-552-2211  
Fax: 617-552-2214  
E-mail: (Art Dept): royal@sign.com

07-3558  
07-3558

Signs Made in the USA  
Dennis Morris  
dennis@royalsign.com  
07-3558  
S. Chums  
07-3558  
S. Chums  
07-3558

DEPT 136  
12/13/11

07-3568

**APPROVED**  
Administrative Design Review  
Case Planner Initials: DE  
Case # 0207-136-C  
Date: 8/18/11

0207-136-C (10r)

**DESIGNATED TENANT DISPLAY AREAS**

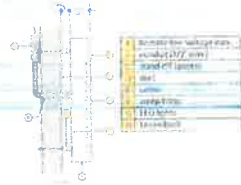
Tenant signs up to 2' deep, reverse side painted, aluminum, letters painted, 1/2" x 3/8" Black Steel Sign.

Sign placed on exterior wall of facade.

*See Signage Schedule for Type A-Materials & Colors*



Remote Mounted IBC Letter (LEDs - Cross Section Detail)



Non-Illuminated IBC - Cross Section Detail



Building "Front" Building 11 Type A-2 Scale N.T.S.



Building West "Front" Building West "Front" Building 11 Type A-2 Scale 1/16" = 1'-0"



Building East "Rear" Building 11 Type A-2 Scale 1/16" = 1'-0"

(BLUE BANDS DENOTE SIGN LOCATION) = 

12/18/17

City of  
Boston  
Professional  
Village

2601 N. 31st Ave.  
Providence, RI 02905  
602-919-6288  
Fax: 609-275-0035  
Email: 311 Dept  
my311@providence.net

07-2060  
07-2670

Suma Name  
email: sumaj@providence.net  
12-0307  
S. Conroy  
S. Cruise

07-3570

**APPROVED**  
Administrative Design Review  
Case Planner Initials: DC  
Case # 2017-136-C  
Date: 8/18/17

0207-136-C(15-1)

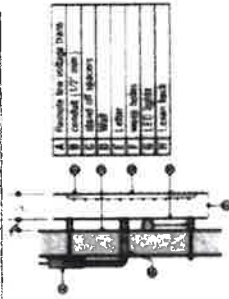


**DESIGNATED TENANT DISPLAY AREAS**

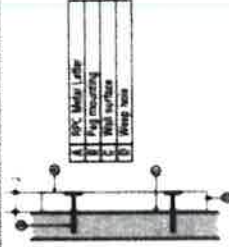
Designated tenant display areas shall be located on the exterior of the building and shall be clearly marked with signage. Signage shall be in the form of a sign or signs and shall be clearly visible from the street.

**UTZ**

Front Mounted RPC Letter / ECRs - Cross Section Detail



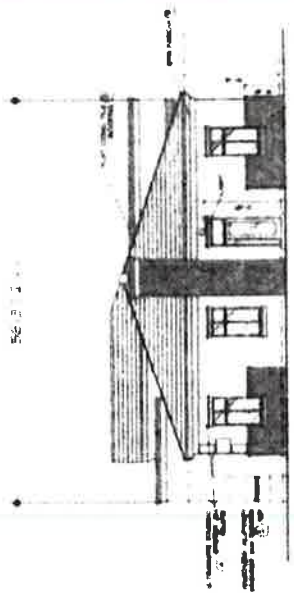
Non-Illuminated RPC - Cross Section Detail



Building Front

Building 6 Type B-2

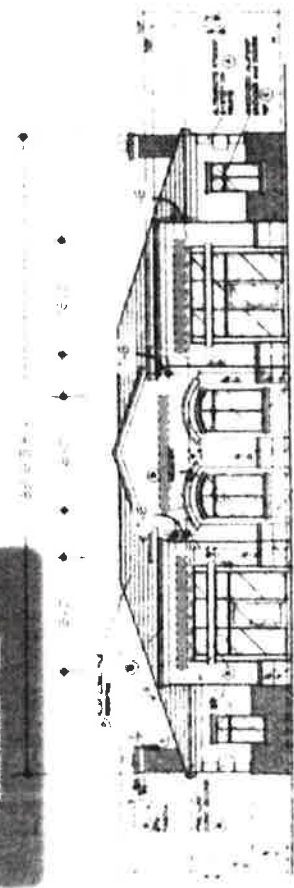
Scale N.T.S.



Building East Right

Building 6 Type B-2

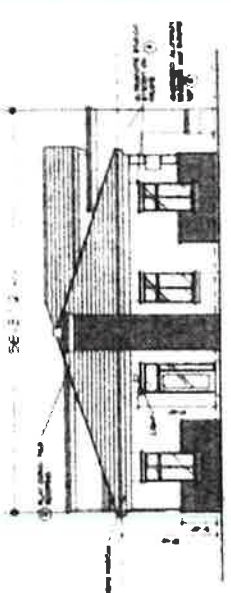
Scale 1/8" = 1'-0"



Building East Left

Building 6 Type B-2

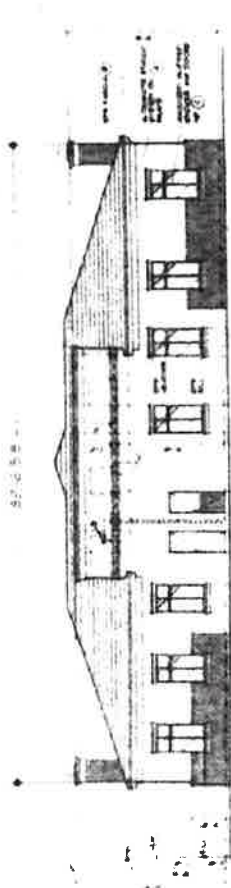
Scale 1/8" = 1'-0"



Building West Right

Building 6 Type B-2

Scale 1/8" = 1'-0"



Building West Left

Building 6 Type B-2

Scale 1/8" = 1'-0"

(BLUE BANDS DENOTE SIGN LOCATION)

**APPROVED**  
 Administrative Design Review  
 Case Planner Initials: *DOJ*  
 Case # *20136C*  
 Date: *8/13/16*

Bayton Professional Village  
 10000 Bayton Village Blvd  
 Suite 100  
 Houston, TX 77055  
 Tel: 281-416-1111  
 Fax: 281-416-1112  
 www.baytonpro.com

Bayton Professional Village  
 10000 Bayton Village Blvd  
 Suite 100  
 Houston, TX 77055  
 Tel: 281-416-1111  
 Fax: 281-416-1112  
 www.baytonpro.com



07-3564