

## Comprehensive Sign Program

COMPREHENSIVE  
SIGN  
PROGRAM

# Fry's Marketplace

S.W.C of Chandler Heights & South Higley Road  
Gilbert, Arizona

CSP created  
September 22, 2008  
Revised: 1-27-09

APPROVED PLANS  
Design Review Board  
CASE DR07-68 S (DR08-76)  
DATE Sept 10, 09  
SUBJECT TO DESIGN BOARD OF APPROVAL  
*OK W/and*

Prepared by:



■ ADDRESS: 400 N. WILLOW PKW, AZ, 85119  
■ PHONE: (602)-272-4354  
■ FAX: (602)-272-4354  
■ www.bootzandduke.com

**COMPREHENSIVE SIGN PROGRAM**  
**Sign specifications and Requirements**

The purpose of this Comprehensive Sign Programs is to create a graphic environment that is individual and distinctive in identity for the merchant and also compatible with other signs within the Property. The total concept should give an impression of quality and instill a professional business image.

The following specifications shall be used for the design of all signage within the Property; however, in all cases, final written approval by Landlord is required prior to manufacturing and installation of all signs.

For purposes of this Comprehensive Sign Program, any reference herein to "Landlord" shall mean LDR-Seville SWC, L.L.C. or its designee.

**PROCEDURE:** All signage drawing proposals will be submitted in three (3) copies to Landlord for written approval, prior to application for sign permit from Town of Gilbert.

**NOTICE:**

WRITTEN APPROVAL FROM LANDLORD AND CONFORMANCE WITH THE REQUIREMENTS SET FORTH HEREIN DOES NOT IMPLY CONFORMANCE WITH APPLICABLE LAWS, CODES, RULES, AND REGULATIONS PROMULGATED BY TOWN OF GILBERT OR ANY OTHER APPLICABLE GOVERNMENTAL AGENCY OR BODY (COLLECTIVELY, THE "LAWS"). ALL SIGNAGE LOCATED WITHIN THE PROPERTY SHALL BE APPROVED IN WRITING BY DECLARANT AND SHALL COMPLY WITH THE APPLICABLE LAWS, RECEIPT BY TENANT OF A SIGN PERMIT AND NOTIFICATION BY TENANT TO LANDLORD MUST BE RECEIVED PRIOR TO MANUFACTURING AND INSTALLATION OF ANY SIGNAGE.

APPROVED PLANS  
 Design Review Board  
 CASE DR07-68  
 DATE \_\_\_\_\_  
SUBJECT TO TOWN OF GILBERT APPROVAL

**A. GENERAL PROVISIONS**

1. All signs and signage programs must conform to the requirements of this Comprehensive Sign Program, Town of Gilbert, and all applicable Laws. Applications and submittals for signage permits shall be per Town of Gilbert's procedure and requirements.
2. Signs shall identify the person or company operating the use conducted on the Parcel or Suite. No off-premises advertising is permitted.

**B. GENERAL REQUIREMENTS**

1. No signs, advertisements, notices, or other lettering shall be displayed, exhibited, painted or affixed in any manner to any part of the building exterior except as approved in writing by the Landlord.

2. Each Tenant shall defend, indemnify and hold the Landlord harmless for, from, and against all claims, costs (including attorneys' fees, expert witness fees and other litigation related costs), damages, expenses, liabilities and losses arising from the installation, maintenance and repair of Tenant's signs.
3. Each electrical sign, and the installation thereof, shall comply with all applicable Laws.
4. Tenant shall obtain all necessary permits for signs and the construction and installation of signs.
5. No labels shall be placed on the exposed surfaces of signs except those required by applicable Laws. Required labels shall be applied in conspicuous locations.
6. All penetrations of the building structure required for sign installation shall be neatly sealed in a watertight manner.
7. Any sign that does not conform with the requirements of this Comprehensive Sign Program or was not approved by the Landlord as required hereby shall be immediately removed or brought into conformance at the Tenant's expense.
  - a. Signs with penetrations falling above roof line must seal wiring using a rear raceway.

**C. TYPE OF SIGN**

1. All signs shall contain individual, pan channel or reverse pan channel, internally illuminated, wall mounted letters. Letters are not to be on a background and shall not be mounted on an exposed raceway.

APPROVED PLANS  
 DATE: 06-27-68  
 BY: \_\_\_\_\_

**D. SPECIFIC REQUIREMENTS FOR BUILDINGS SIGNAGE****1. SIZE OF SIGN**

- a. **Depth:** 3"-10"
- b. **Length:** The overall length of spread of letters shall not exceed 80% of leased front footage as specified by Lease. (Example: Maximum spread for a sign for a space thirty (30) feet wide will be twenty-four (24) feet.
- c. **Height:** Sign may not exceed 80 % of SIGN BAND height.
- d. **Quantity:** Each Tenant has a unique area in which signs are allowed.
- e. **Overall Size of Sign:** Each sign allowed may be one (1) square foot in size per foot of frontage on the same elevation, as noted below ( Not all elevations have been allotted signage ).
- f. The Town of Gilbert sign code reads as follows:
  - 1. Each Tenant will be allowed one & one-half (1.5) square feet of building signage per foot of linear building frontage when frontage is greater than 75 feet from Property Line/Street Frontage. If frontage is less than 75 feet, one (1) square foot of building signage per foot of linear building frontage.
  - 2. Only the longest building frontage may be used to calculate sign square footage.
  - 3. Nationally recognized businesses shall be allowed to use their Corporate colors and letter style.

**E. GROUND SIGNS**

- a. Fry's Marketplace will have a total of five (5) ground signs.
- b. Ground signs A1 / B1 & C1 located off of East Chandler Heights Road  
Ground signs D-1 & E1 located off of South Higley Road.
- c. No additional ground signs for Pads A-C will be permitted.
- d. Pads A / B / C will have tenant panels on ground signs C1 & E1.
- e. Maximum square footage for ground signs not to exceed 60 square feet.
- f. Maximum overall height of ground signs not to exceed 9'-0" in height.
- g. Top tenant panel not to exceed 8'-0" in height from grade.

APPROVED PLANS  
 TOWN OF GILBERT  
 CASE: DR07-68S  
 DATE: \_\_\_\_\_  
 SUPERVISOR: \_\_\_\_\_

**F. LIGHTING**

1. All lighting shall be illuminated with internal neon lighting or L.E.D's.
2. All electrical will be U.L. or equivalent approved.
3. Primary copy (store name) required to be lighted. Illumination of secondary copy such as crests, shields, logos, established corporate insignias, or any other modifiers is subject to Declarant's written approval.
4. Electrical power shall be brought to required location at Owner's expense. The routing and location of other required items shall not be visible on the front of fascia.
5. Penetration of structure and graphics beams shall be kept to a minimum and must have proper insulation for voltage cable.
6. Transformers shall be concealed behind building fascia and mounted in metal raceway or boxes.

**G. DETAIL DRAWING**

1. Three copies of a complete and detailed drawing by Owner's sign company shall be submitted to Declarant for final review and written approval.
2. Elevation of building fascia and sign shall be drawn using a minimum 1/4" to 1" scale.
3. Drawing shall indicate the following specifications:
  - a. Type, thickness, and color of Plexiglas type of material used for backs, returns, and trim caps, including color.
  - b. Finish used on returns.
  - c. Type of illumination and mounting method.
4. Drawing must include building fascia cross section showing electrical connections.

**H. WINDOW SIGNAGE**

Window sign not to exceed 25 % of window area. Any other variations must be approved by Declarant in writing.

Window signs to be created in a professional manner.

APPROVED PLANS  
 DATE 02-27-68 S

**I. BANNERS**

Grand Opening banners are allowed with Declarant approval and must be permitted through the Town of Gilbert.

**J. ADDRESS SIGNS**

Each store is required to display a street address and suite number above storefront door and service door of four (4) inch white exterior vinyl.

**K. THE FOLLOWING ARE NOT PERMITTED**

Roof signs.

Cloth signs or streamers hanging in front of business.

Exposed seam tubing.

Animated or moving components.

Intermittent or flashing illumination.

Iridescent painted signs.

Letter mounted or painted-on illuminated panels.

Signs or letters painted directly on any surface.

Signs will not be permitted to be installed or placed along perimeter of Property

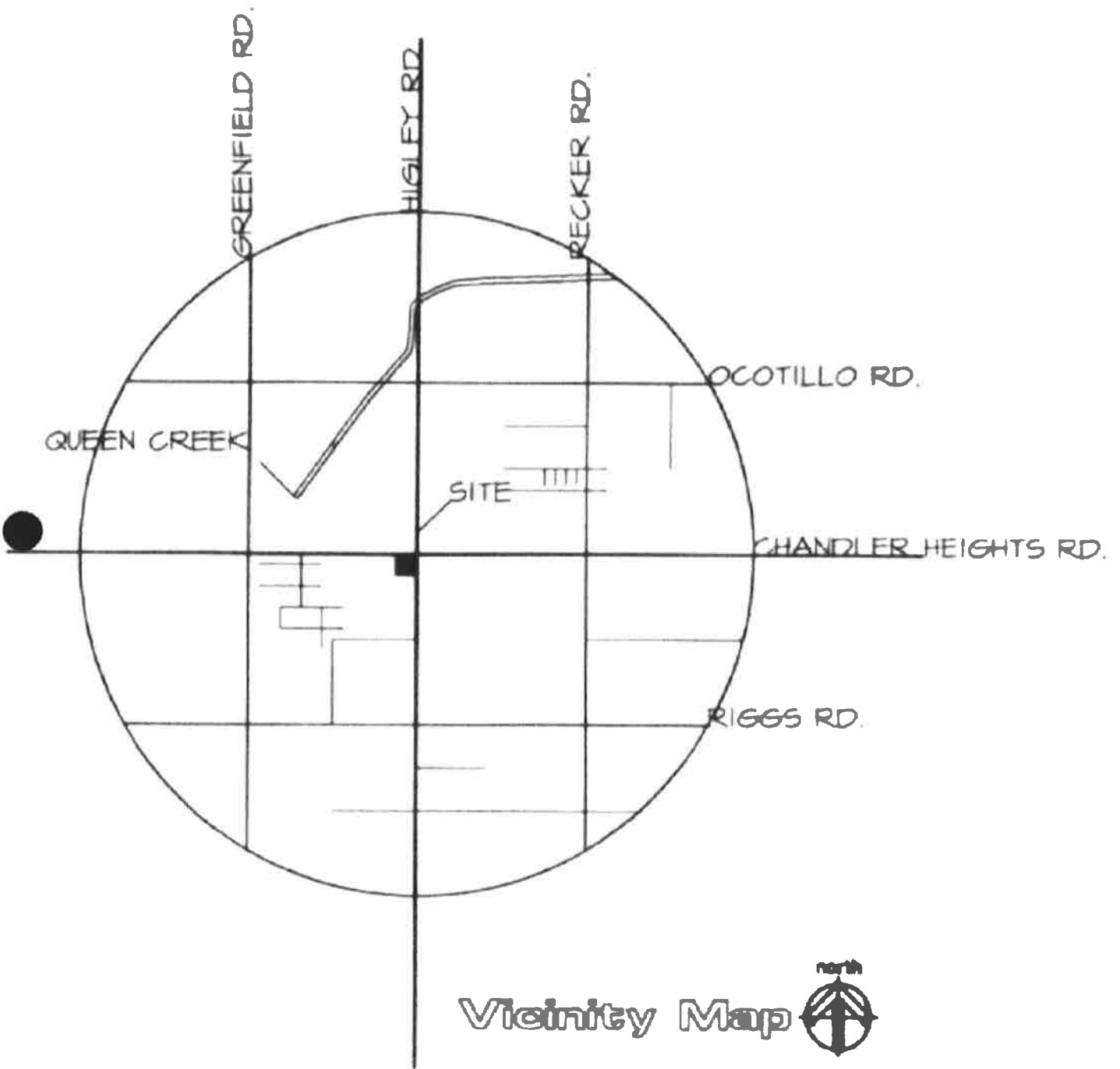
If you have any questions please call:

Andy Gibson  
**Bootz and Duke Sign Company**  
4028 W. Whitton Ave  
Phoenix, AZ 85019

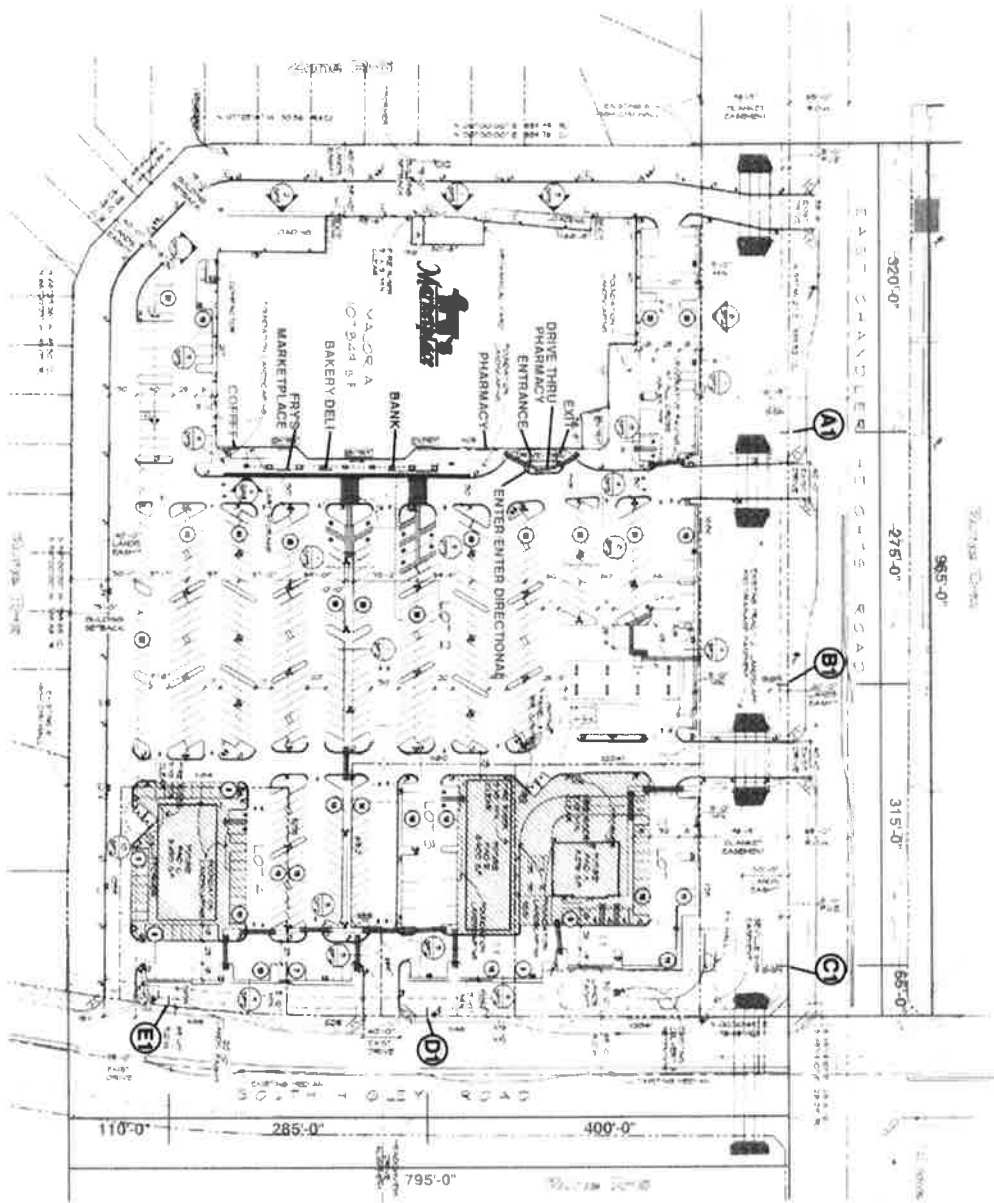
Phone: 602-272-9356  
Fax: 602-272-4608

[andy@bootzandduke.com](mailto:andy@bootzandduke.com)

APPROVED  
CALL 602-272-9356  
FAX 602-272-4608



Vicinity Map 



**GROUND SIGN LEGEND**

- A1** FRY'S MARKETPLACE MONUMENT  
2 TENANT PANELS  
9'-0" overall height
- B1** FRY'S FUEL MONUMENT  
8'-0" overall height
- C1** PAD MONUMENT  
6 TENANT PANELS  
8'-0" overall height
- D1** FRY'S MARKETPLACE MONUMENT  
PRICE CABINET  
9'-0" overall height
- E1** PAD MONUMENT  
6 TENANT PANELS  
8'-0" overall height

SITE MAP

**SITE PLAN**



PA07-48

SP-1

COMMERCIAL DEVELOPMENT  
5WC E. CHANDLER HEIGHTS  
& S. HIGLEY ROAD  
MARIETTA, GEORGIA

ROBERT MEDICER  
architects and landscape inc.

Date 9-04-08

DR07-68 S (1st)

COMPREHENSIVE SIGN PROGRAM



NOT TO EXCEED 80%  
OF SIGN BAND IN HEIGHT  
(COLORED BAND NEAR TOP OF BUILDING)

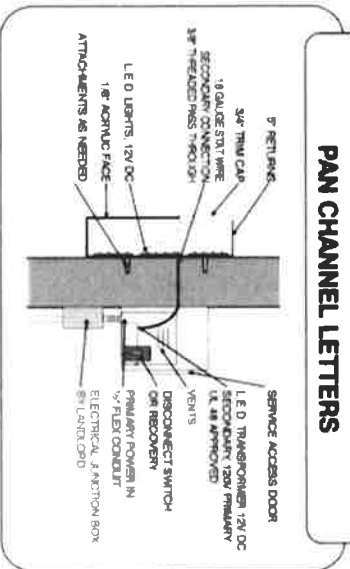
NOT TO EXCEED 80% LEASED FRONTAGE

# TENANT

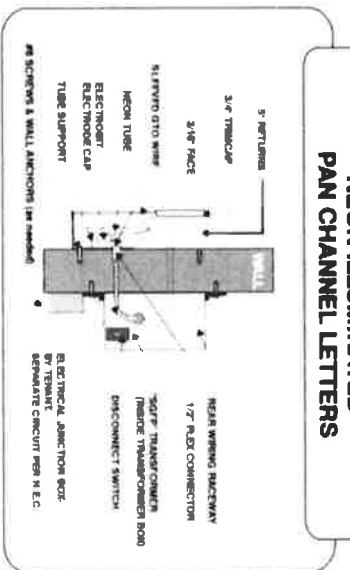
TYPICAL SET OF PAN CHANNEL LETTERS

TYPICAL SET OF PAN CHANNEL LETTERS.

### L.E.D. ILLUMINATED PAN CHANNEL LETTERS



### NEON ILLUMINATED PAN CHANNEL LETTERS



#### CONSTRUCTION

- 063\"/>
- 5\"/>
- 3/4\"/>

#### MOUNTING

MOUNT FLUSH TO EXTERIOR FASCIA WALL.

#### FACE

3/16\"/>

#### ILLUMINATION

ELECTRA L.E.D. SIGN OR GEL-COR L.E.D.'S OR NEON TUBING.  
SINGLE OR DOUBLE STROKE.  
1\"/>

NOT TO EXCEED 80%  
OF SIGN BAND IN HEIGHT  
(COLORED BAND NEAR TOP OF BUILDING)

# TENANT

NOT TO EXCEED 80% LEASED FRONTAGE

TYPICAL SET OF REVERSE PAN CHANNEL LETTERS

TYPICAL SET OF REVERSE PAN CHANNEL LETTERS.

**CONSTRUCTION**

0.90" ALUMINUM FACES.

3" DEEP OR 3" ALUMINUM RETURNS.  
COLOR PER TENANT'S CORP. COLORS.

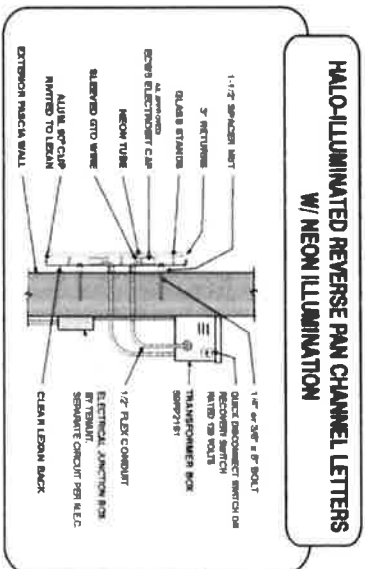
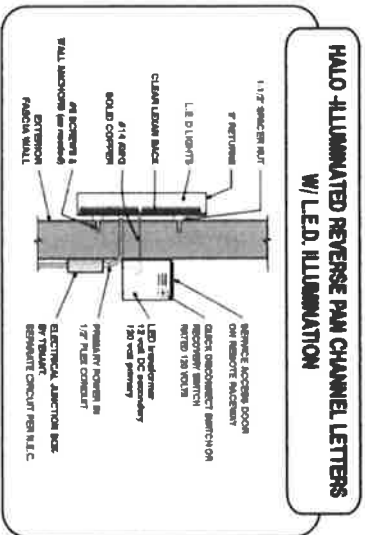
3/16" CLEAR LEXAN BACKS.

**MOUNTING**

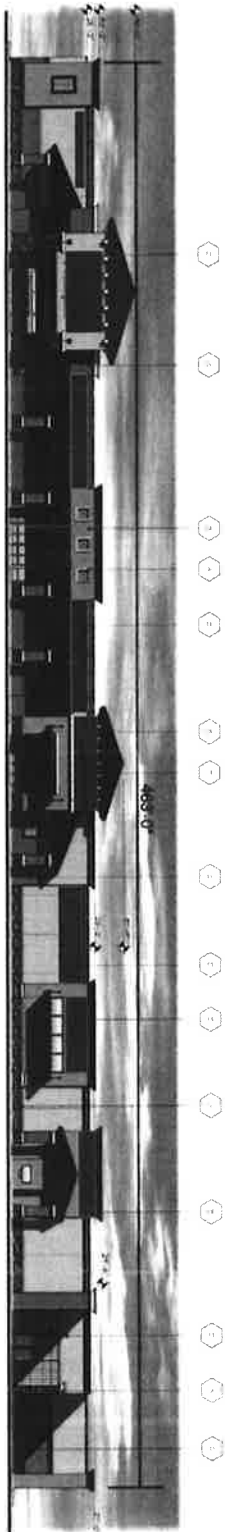
MOUNT 1.5" SPACE FROM EXTERIOR FASCIA WALL.

**ILLUMINATION**

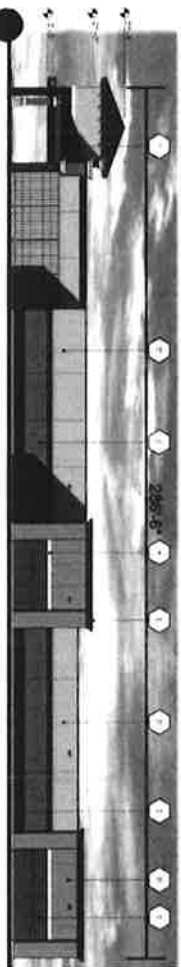
ELECTRAL-E.D. SLIDAM OR GEL-COR L.E.D.'S OR NEON TUBING.  
SINGLE OR DOUBLE STROKE.  
1 STROKE PER 4"  
WITH REMOTE TRANSFORMER.



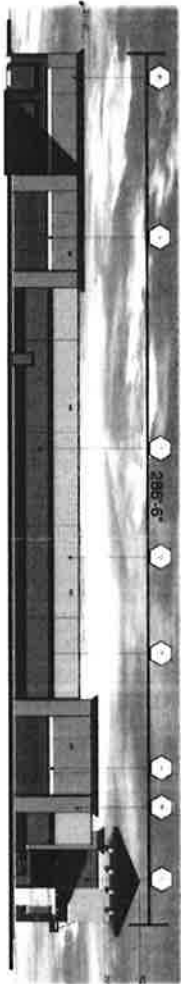
ELEVATIONS



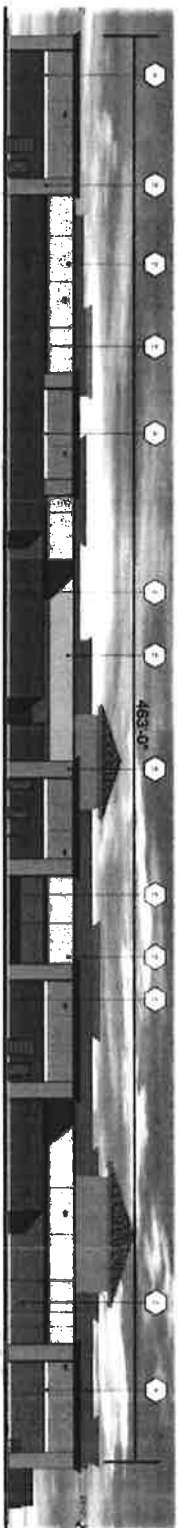
EAST ELEVATION scale: 1"=40'



NORTH ELEVATION scale: 1"=40'



SOUTH ELEVATION scale: 1"=40'



WEST ELEVATION scale: 1"=40'

— Potential Sign Locations

Sheet  
**EL-1**  
 Date: 03/11/11  
 Project: MALL  
 Drawn: WDS  
 Checked: RVM

CONVEYED BY SEATTLE  
 SMC CONTRACTORS INC  
 1 - 2000 10th  
 S. STEWART ST  
 SEATTLE, WA 98104

Date: 07/08/07



ROBERT KUBICEK  
 AND ASSOCIATES, INC.

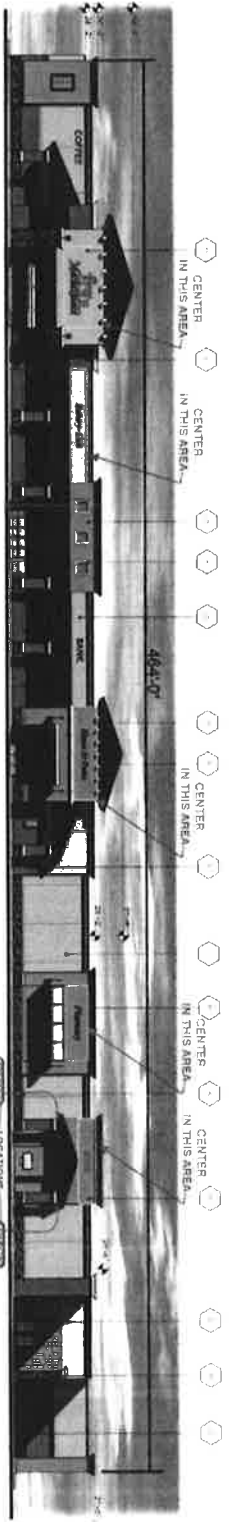


COMPREHENSIVE SIGN PROGRAM  
 11111 Washington Blvd  
 Phoenix, AZ 85042

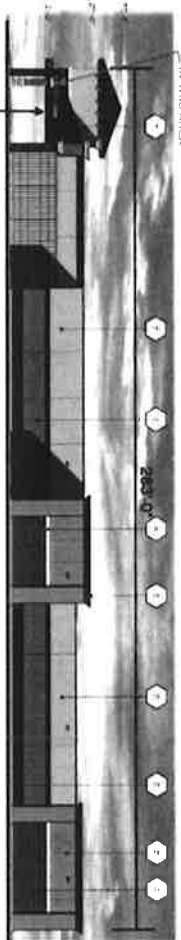
|   |              |                    |
|---|--------------|--------------------|
| 1 | WOOD         | 1/2" x 1/2" x 1/2" |
| 2 | ALUMINUM     | 1/2" x 1/2" x 1/2" |
| 3 | GLASS        | 1/2" x 1/2" x 1/2" |
| 4 | PAINT        | 1/2" x 1/2" x 1/2" |
| 5 | LED LIGHTING | 1/2" x 1/2" x 1/2" |
| 6 | ...          | ...                |

DATE: 02/27-2/8/11

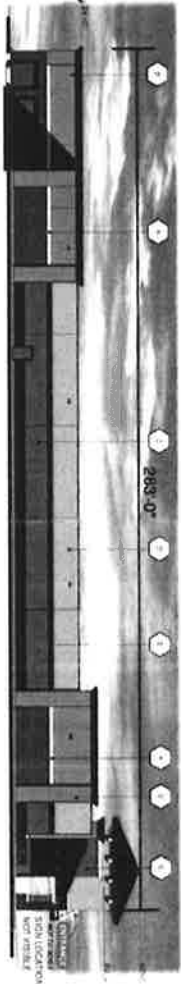




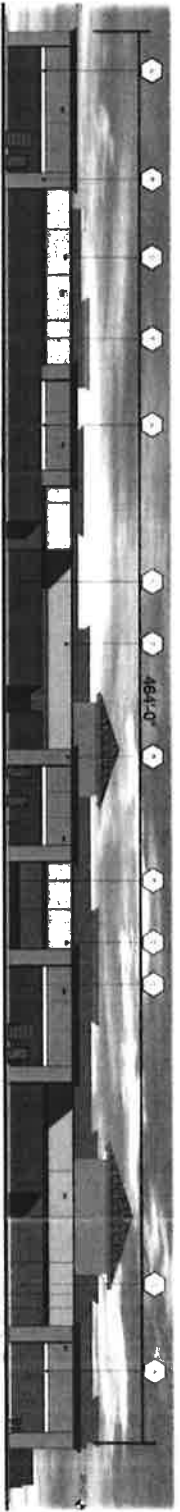
EAST ELEVATION scale: 1"=40'



NORTH ELEVATION scale: 1"=40'



SOUTH ELEVATION scale: 1"=40'



WEST ELEVATION scale: 1"=40'

**EL-1**  
 SHEET NO. 02111  
 PROJECT NO. 003  
 PROJECT NAME

SHAWNEE A. DE WILDEWYN  
 INC. OWNER  
 11111 S. W. 111TH  
 O. 33333 AVENUE

DATE 07/08/07

**ROBERT KUBICEK ARCHITECTS  
 AND ASSOCIATES, INC.**



| NO. | DESCRIPTION | DATE |
|-----|-------------|------|
| 1   | REVISION    |      |
| 2   | REVISION    |      |
| 3   | REVISION    |      |
| 4   | REVISION    |      |
| 5   | REVISION    |      |
| 6   | REVISION    |      |
| 7   | REVISION    |      |
| 8   | REVISION    |      |
| 9   | REVISION    |      |
| 10  | REVISION    |      |
| 11  | REVISION    |      |
| 12  | REVISION    |      |
| 13  | REVISION    |      |
| 14  | REVISION    |      |
| 15  | REVISION    |      |
| 16  | REVISION    |      |
| 17  | REVISION    |      |
| 18  | REVISION    |      |
| 19  | REVISION    |      |
| 20  | REVISION    |      |
| 21  | REVISION    |      |
| 22  | REVISION    |      |
| 23  | REVISION    |      |
| 24  | REVISION    |      |
| 25  | REVISION    |      |
| 26  | REVISION    |      |
| 27  | REVISION    |      |
| 28  | REVISION    |      |
| 29  | REVISION    |      |
| 30  | REVISION    |      |
| 31  | REVISION    |      |
| 32  | REVISION    |      |
| 33  | REVISION    |      |
| 34  | REVISION    |      |
| 35  | REVISION    |      |
| 36  | REVISION    |      |
| 37  | REVISION    |      |
| 38  | REVISION    |      |
| 39  | REVISION    |      |
| 40  | REVISION    |      |
| 41  | REVISION    |      |
| 42  | REVISION    |      |
| 43  | REVISION    |      |
| 44  | REVISION    |      |
| 45  | REVISION    |      |
| 46  | REVISION    |      |
| 47  | REVISION    |      |
| 48  | REVISION    |      |
| 49  | REVISION    |      |
| 50  | REVISION    |      |

COMPREHENSIVE SIGN PROGRAM - Signs, Mobilhome, SIGNAGE/Channel Letters & Signage, Road Signage

135.8 Total sq. ft. = (57.5 + 78.3)

165.0 Total sq. ft.

1. Calculated as the combined perimeter of sign areas

2. Calculated as one rectangular area

**ILLUM. FACE-LIT CHANNEL LETTERS**  
**SKU#: LF-M-1**

**FRYS' LETTERS**

- .063 alum. returns and .080 backs; painted MP 25829 Icos Sand Beige.
- 3/16" Plexiglas® #2415 Red faces.
- faces retained by use of aluminum "c-dip" system 5/8" x 1" (painted red)
- Channel interiors painted Reflective White.
- Internal Electrical ED® Red LED illumination.
- Remote power supplies; per populated drawing.

**FINISHES**

- Matthews® acrylic polyurethane or GripGuard® equivalent.

**ELECTRICAL**

- U.L. listed and labeled.
- Disconnect "toggle" switch per letter.
- \* **Note: 120 volt**



**Marketplace' LETTERS**

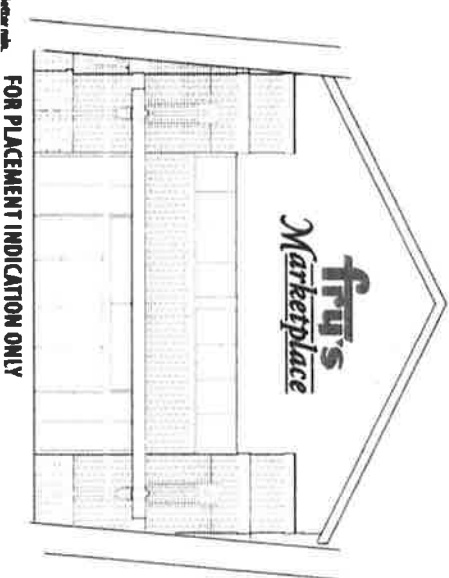
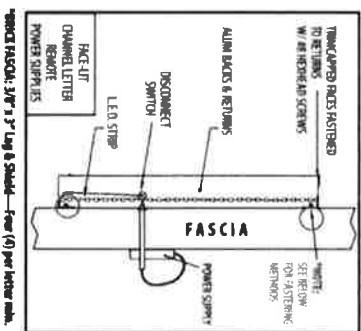
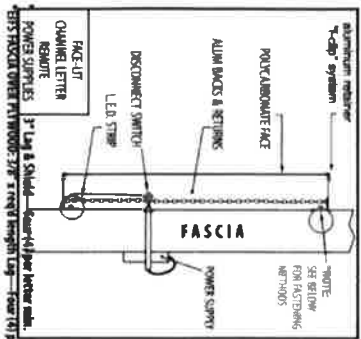
- .050 alum. returns and .063 alum. backs painted MP 25829 Icos Sand Beige.
- Channel interiors painted Reflective White.
- 3/16" Plexiglas® #2030 Green faces.
- 1" Wagner Zip-Change™ "Jewellite" Ivory trimcaps.
- Internal Electrical ED® Green LED illumination.
- Remote power supplies; per populated drawing.

**FINISHES**

- Matthews® acrylic polyurethane or Grip-Gard® equivalent.

**ELECTRICAL**

- U.L. listed and labeled.
- Disconnect "toggle" switch per letter/line.
- \* **Note: 120 volt**

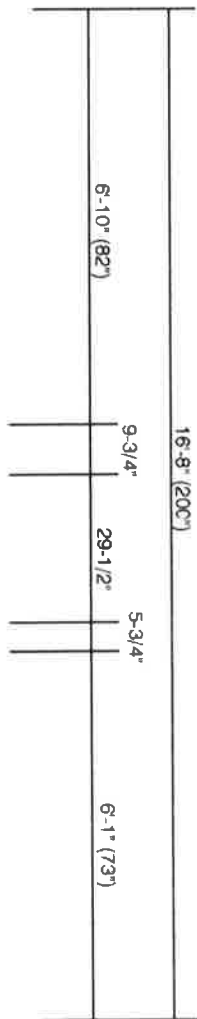


\* Colors may not be exact as shown due to printer and/or computer monitor limitations. Refer to manufacturer's material color samples for accurate representation.

Scale: 3/8" = 1'

FRYS MARKETPLACE PACKAGE

24" x 200" = 33.33 square feet

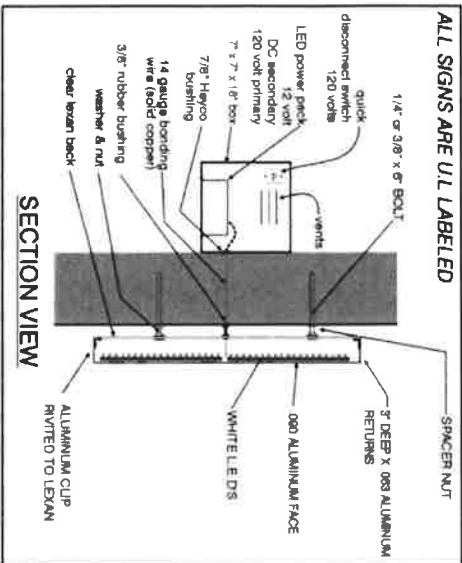


# Home & Patio



**REVERSE CHANNEL LETTERS W/ L.E.D ILLUMINATION**

**ALL SIGNS ARE U.L LABELED**



2005 National Electrical Code. 120 Volts

**(1) ONE SET OF HALO-ILLUMINATED REVERSE CHANNEL LETTERS**  
Scale: 1/2"=1'-0"

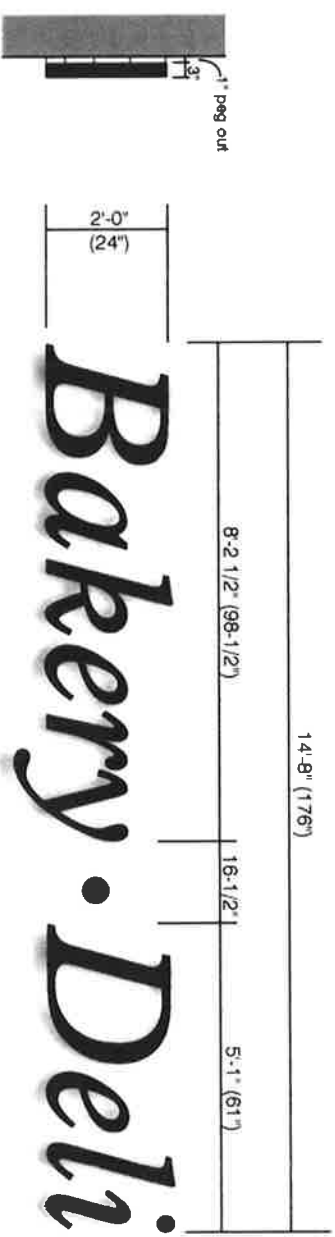
- FABRICATE & INSTALL (1) ONE SET OF LED HALO-ILLUMINATED REVERSE CHANNEL LETTERS.
- 083 ALUMINUM 3" DEEP RETURNS PAINT BLACK SATIN.
- 090 ALUMINUM FACES PAINT BLACK SATIN.
- 3/16" CLEAR LEXAN BACKS.
- HALO-ILLUMINATE W/ WHITE LEDS.
- REMOTE POWER PACKS.
- 120 VOLT
- PEG OFF 1" FROM EXTERIOR WALL.

**Electrical Specifications**  
All Signs Fabricated as per 2005 National Electrical Code Specifications

DATE: 06-07-08

FRYS MARKETPLACE PACKAGE

24" x 176" = 29.33 square feet

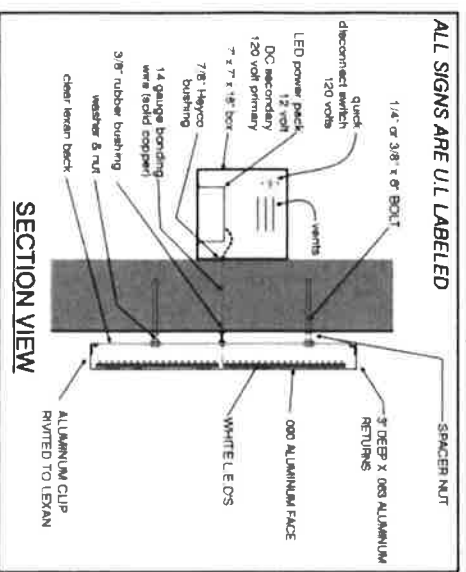


**(1) ONE SET OF HALO-ILLUMINATED REVERSE CHANNEL LETTERS**

Scale: 1/2" = 1'-0"

- FABRICATE & INSTALL (1) ONE SET OF HALO-ILLUMINATED REVERSE CHANNEL LETTERS.
- 063 ALUMINUM 3" DEEP RETURNS PAINT BLACK SATIN.
- 090 ALUMINUM FACES PAINT BLACK SATIN.
- 3/16" CLEAR LEXAN BACKS.
- HALO-ILLUMINATE W/ WHITE LEDS.
- REMOTE POWER PACKS.
- 120 VOLT
- PEG OFF 1" FROM EXTERIOR WALL.

**Electrical Specifications**  
 All Signs Fabricated as per  
 2005 National Electrical Code  
 Specifications.



**REVERSE CHANNEL LETTERS W/ L.E.D ILLUMINATION**  
ALL SIGNS ARE U.L LABELED

2005 National Electrical Code. 120 Volts

DR07-68 S (1st)

DR07-68 S (1st)



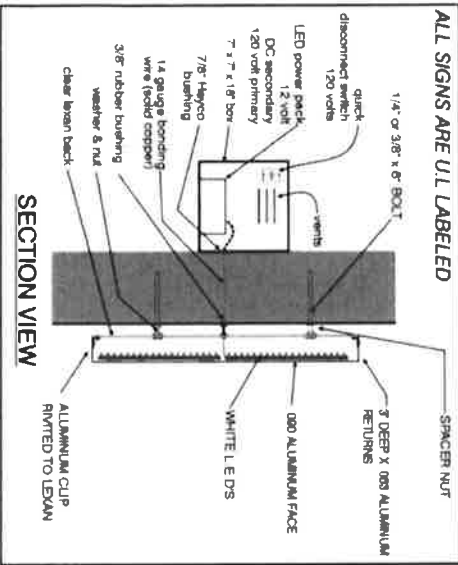
FRY'S MARKETPLACE PACKAGE

24" x 140" = 23.33 square feet



**REVERSE CHANNEL LETTERS W/ LED ILLUMINATION**

ALL SIGNS ARE U.L. LABELED



2005 National Electrical Code. 120 Volts

**(1) ONE SET OF HALO-ILLUMINATED REVERSE CHANNEL LETTERS**

Scale 1/2" = 1'-0"

- FABRICATE & INSTALL (1) ONE SET OF LED HALO-ILLUMINATED REVERSE CHANNEL LETTERS.
- .063 ALUMINUM 3" DEEP RETURNS PAINT BLACK SATIN.
- .090 ALUMINUM FACES PAINT BLACK SATIN.
- 3/16" CLEAR LEXAN BACKS.
- HALO-ILLUMINATE W/ WHITE LEDS.
- REMOTE POWER PACKS.
- 120 VOLT
- PEG OFF 1" FROM EXTERIOR WALL.

**Electrical Specifications**  
 All Signs Fabricated as per  
 2005 National Electrical Code  
 Specifications.

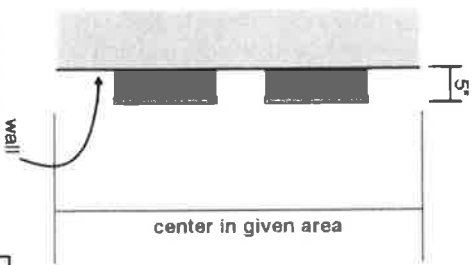
D2007-68 S

FRYS MARKETPLACE PACKAGE

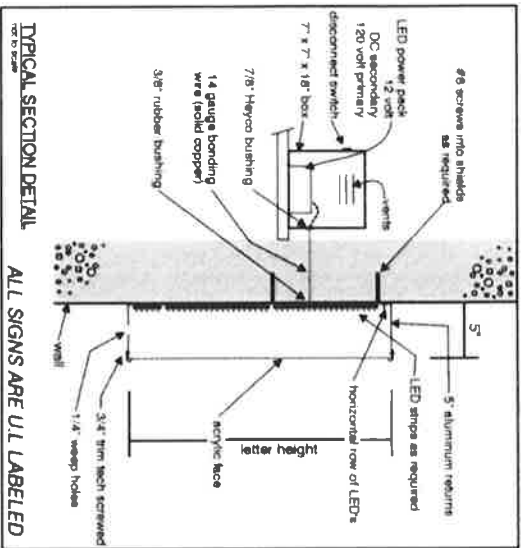
25" x 91" = 15.79 square feet

7'-7" (91")

# DRIVE THRU PHARMACY



### PAN CHANNEL LETTERS W/ L.E.D ILLUMINATION



### (1) ONE SET OF LED ILLUMINATED PAN CHANNEL LETTERS

Scale: 1"=1'-0"

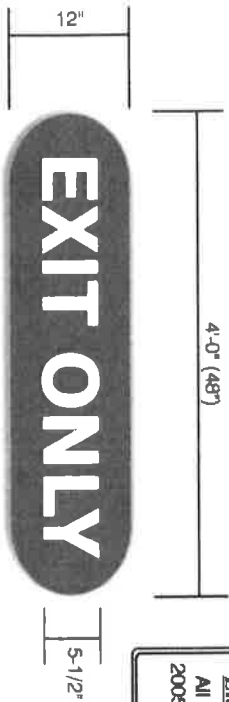
- FABRICATE & INSTALL (1) ONE SET OF LED ILLUMINATED PAN CHANNEL LETTERS.
- 063 ALUMINUM BACKS/ 040 ALUMINUM CLC RED 5" DEEP RETURNS.
- #211-1 RED ACRYLIC FACES.
- 3/4" GOLD TRIM CAP
- RED L.E.D. ILLUMINATION
- REMOTE POWER PACKS.
- 120 VOLTS
- MOUNT FLUSH ONTO BUILDING.

**Electrical Specifications**  
All Signs Fabricated as per  
2005 National Electrical Code  
Specifications.

0/257-665

12" x 48" = 4 square feet  
 12" x 48" = 4 square feet

**ALL SIGNS ARE UL LABELED**  
**Electrical Specifications**  
 All Signs Fabricated as per  
 2005 National Electrical Code  
 Specifications.



**END VIEW**

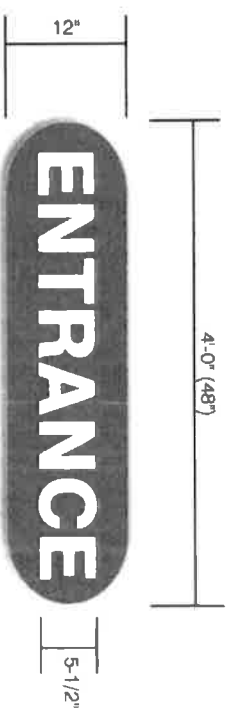
**(1) ONE S/F ILLUMINATED DISPLAY**  
 SCALE 1"=1'-0"  
 4 Square Feet

FABRICATE & INSTALL (1) ONE SINGLE FACE  
 ILLUMINATED DISPLAY  
 .063 ALUMINUM BACKS / .040 ALUMINUM CLC RED 5" DEEP RETURNS.  
 1/8" WHITE ACRYLIC FACES  
 FIRST SURFACE SCARLET RED TRANS. VINYL  
 ON BACKGROUND #230-83  
 CUT OUT COPY TO SHOW THRU WHITE ACRYLIC.  
 1" GOLD JEWELITE TRIM.  
 WHITE L.E.D. ILLUMINATION.  
 REMOTE POWER PACKS.  
 120 VOLTS  
 MOUNT FLUSH TO EXTERIOR WALL.



**EXIT ONLY  
 DISPLAY**

**NORTH ELEVATION**  
 scale 1"=20'

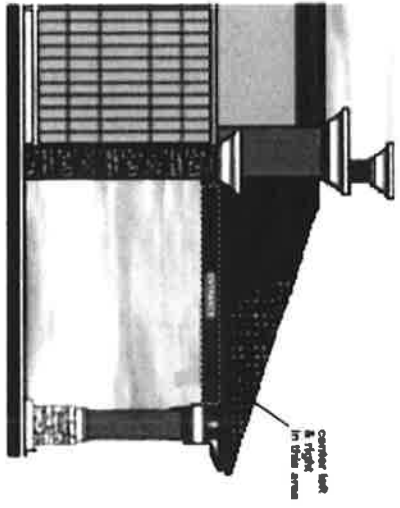


**END VIEW**

**(1) ONE S/F ILLUMINATED DISPLAY**  
 SCALE 1"=1'-0"  
 4 Square Feet

FABRICATE & INSTALL (1) ONE SINGLE FACE  
 ILLUMINATED DISPLAY  
 .063 ALUMINUM BACKS / .040 ALUMINUM CLC RED 5" DEEP RETURNS.  
 1/8" WHITE ACRYLIC FACES  
 FIRST SURFACE SCARLET RED TRANS. VINYL  
 ON BACKGROUND #230-83  
 CUT OUT COPY TO SHOW THRU WHITE ACRYLIC.  
 1" GOLD JEWELITE TRIM.  
 WHITE L.E.D. ILLUMINATION.  
 REMOTE POWER PACKS.  
 120 VOLTS  
 MOUNT FLUSH TO EXTERIOR WALL.

*0507-605 S*



**SOUTH ELEVATION**  
 scale: 1"=10'

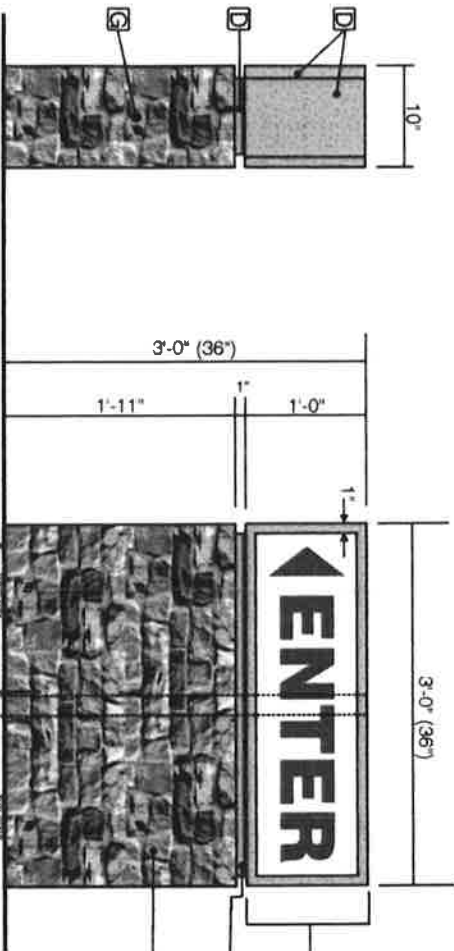
FRY'S MARKETPLACE PACKAGE

12" x 36" = 3 square feet

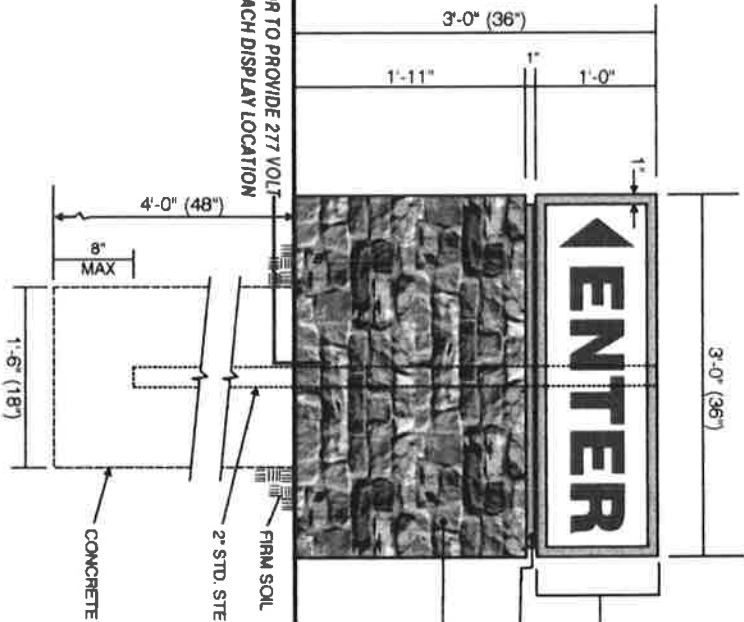
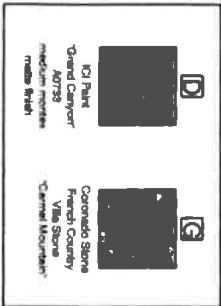


3/16" WHITE LEXAN FACES.  
FIRST SURFACE TRANSLUCENT  
SCARLET RED VINYL #230-83

OPPOSITE SIDE



END VIEW  
CONTRACTOR TO PROVIDE 277 VOLT  
CIRCUIT TO EACH DISPLAY LOCATION



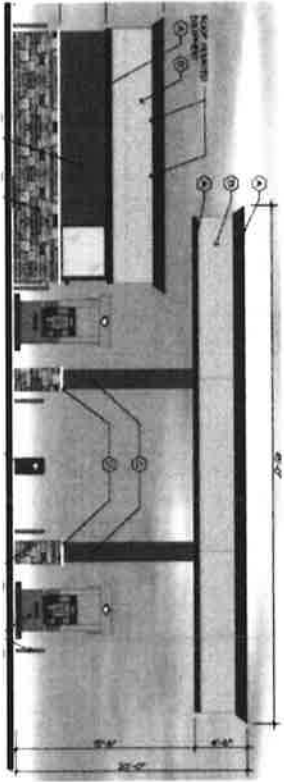
1" x 1" x 1/8" ALUMINUM ANGLE IRON FRAME.  
1-1/2" x 1-1/2" x 3/16" STEEL ANGLE IRON FOR PIPE BRACKETS.  
050 ALUMINUM SKIN.  
**ELECTRICAL COMPONENTS**  
(1) ONE F36T12CWHQ LAMP  
(2) TWO LAMP SOCKETS.  
(1) ONE ALLANSON 148AT277 BALLAST  
(1) ONE 20AMP TOGGLE SWITCH.  
1" ALUMINUM SQUARE TUBE.

1-1/2" x 1-1/2" x 3/16" ALUMINUM ANGLE FRAME.  
1-1/2" x 1-1/2" x 3/16" STEEL ANGLE IRON FOR PIPE BRACKETS  
1/2" CONCRETE BOARD  
STONE VENEER OVER CONCRETE BOARD.

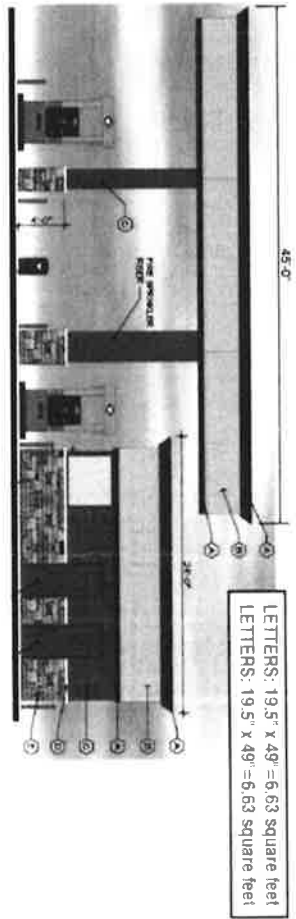
(1) ONE DOUBLE FACE ILLUMINATED DIRECTIONAL.  
SCALE 1" = 1'-0"

ALL SIGNS ARE UL LABELED  
ASA Engineering by  
2006 Edition of International Building Code

Electrical Specifications  
All Signs Fabricated as per  
2005 National Electrical Code  
Specifications.

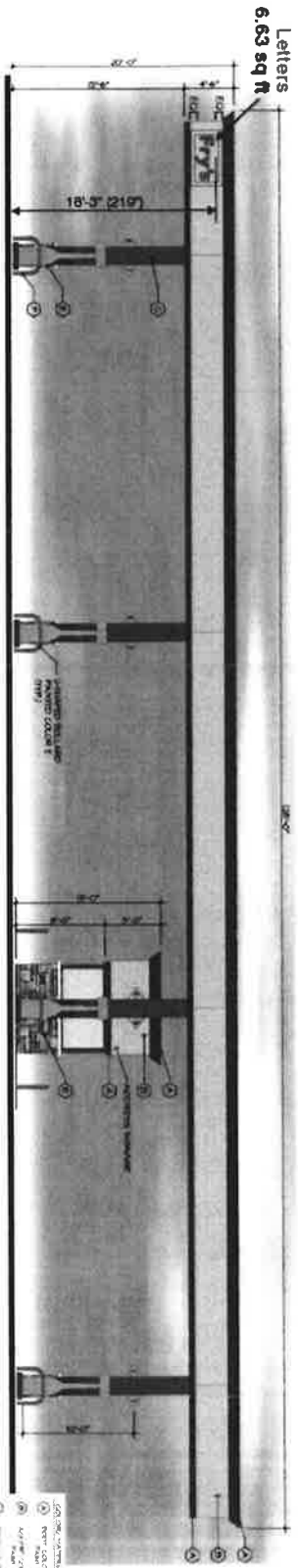


**SOUTH ELEVATION scale: 3/32" = 1'-0"**

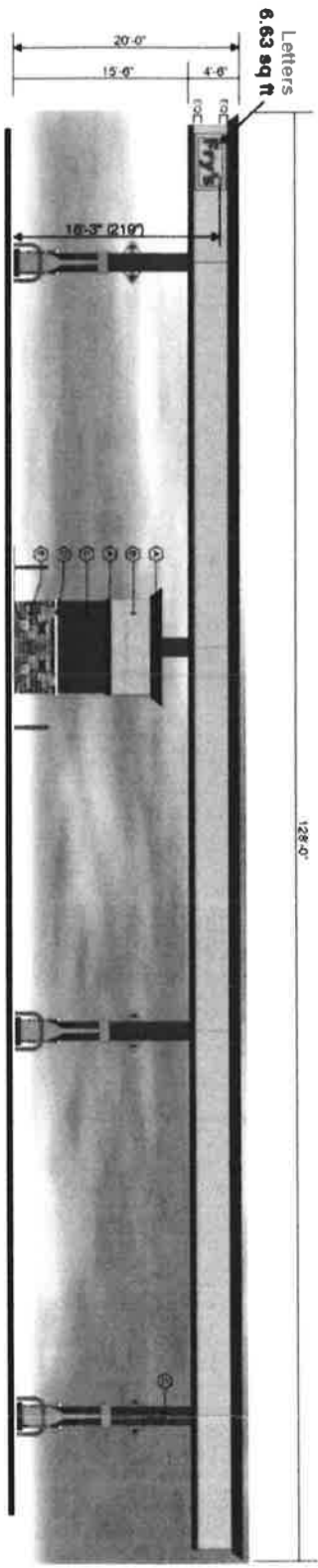


**NORTH ELEVATION scale: 3/32" = 1'-0"**

FRYS FUEL PACKAGE



**EAST ELEVATION scale: 3/32" = 1'-0"**



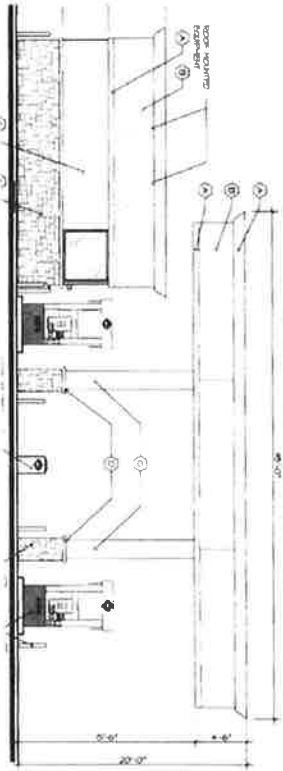
**WEST ELEVATION scale: 3/32" = 1'-0"**

- 1. 20' x 20' x 20' SIGN
- 2. 18' x 18' x 18' SIGN
- 3. 16' x 16' x 16' SIGN
- 4. 14' x 14' x 14' SIGN
- 5. 12' x 12' x 12' SIGN
- 6. 10' x 10' x 10' SIGN
- 7. 8' x 8' x 8' SIGN
- 8. 6' x 6' x 6' SIGN
- 9. 4' x 4' x 4' SIGN
- 10. 2' x 2' x 2' SIGN

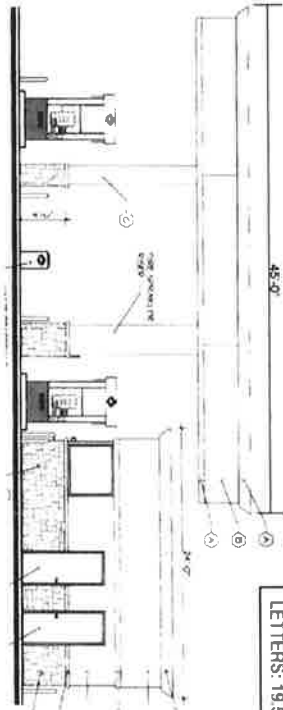
0207-685

FRYS FUEL PACKAGE

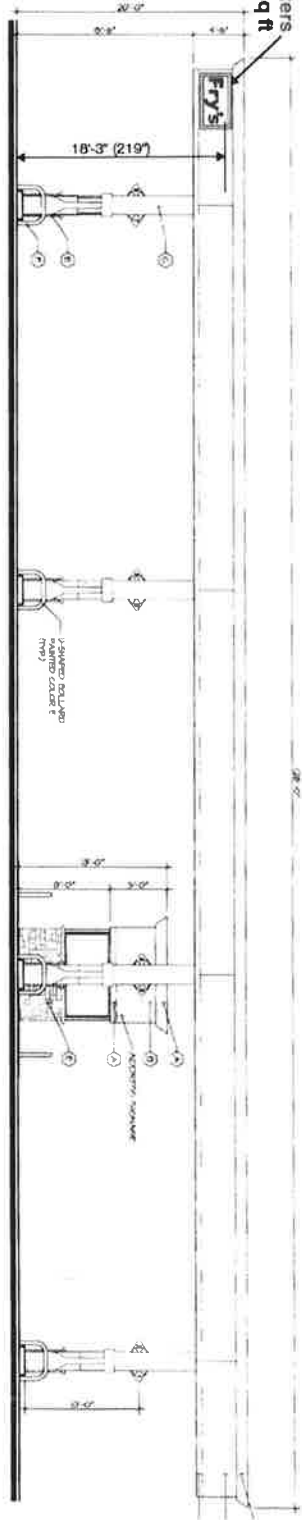
LETTERS: 19.5" x 49" = 6.63 square feet  
 LETTERS: 19.5" x 49" = 6.63 square feet



SOUTH ELEVATION scale: 3/32" = 1'-0"

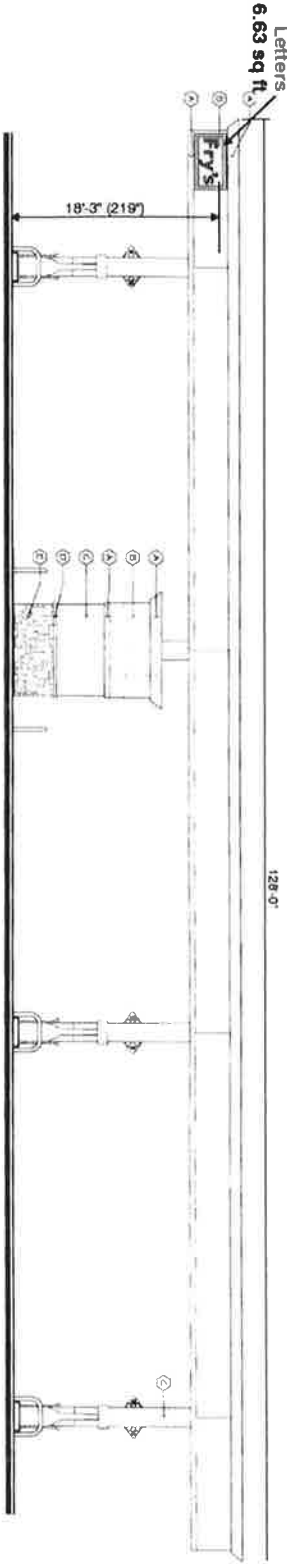


NORTH ELEVATION scale: 3/32" = 1'-0"



EAST ELEVATION scale: 3/32" = 1'-0"

| NO. | DESCRIPTION        | DATE     | BY  | CHKD. |
|-----|--------------------|----------|-----|-------|
| 1   | ISSUED FOR PERMITS | 10/11/11 | ... | ...   |
| 2   | ...                | ...      | ... | ...   |
| 3   | ...                | ...      | ... | ...   |
| 4   | ...                | ...      | ... | ...   |
| 5   | ...                | ...      | ... | ...   |
| 6   | ...                | ...      | ... | ...   |
| 7   | ...                | ...      | ... | ...   |
| 8   | ...                | ...      | ... | ...   |
| 9   | ...                | ...      | ... | ...   |
| 10  | ...                | ...      | ... | ...   |

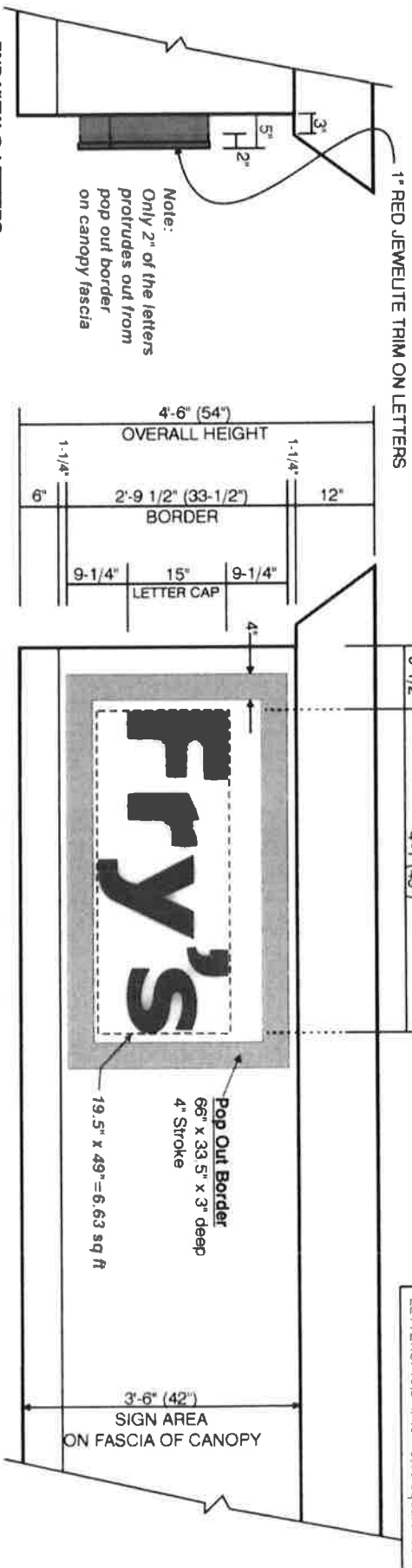


WEST ELEVATION scale: 3/32" = 1'-0"

1007-68 S  
 10/11/11

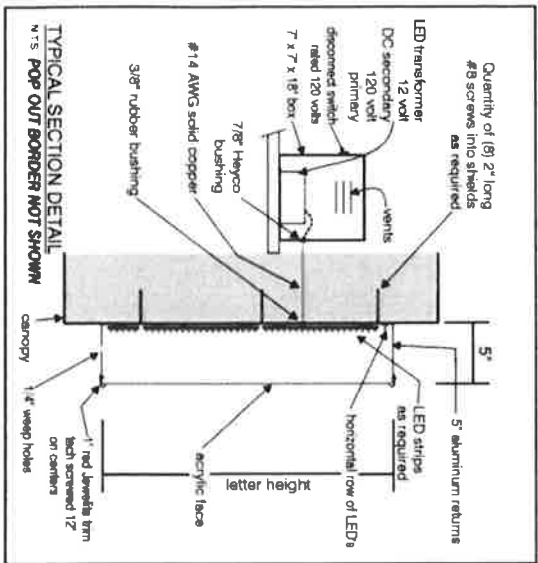
FRYS FUEL PACKAGE

LETTERS: 19.5" x 49" = 6.63 square feet  
LETTERS: 19.5" x 49" = 6.63 square feet



END VIEW @ LETTERS

**FRY'S LETTERS  
PAN CHANNEL LETTERS W/ L.E.D ILLUMINATION**



(2) TWO SETS OF ILLUMINATED LETTERS ON  
PARTIAL FRONT CANOPY FASCIA ELEVATION (sign area only)  
scale: 3/4" = 1'-0"

NOTE: LETTERS SHOWN ARE THE SMALLEST SIZE LETTERS AVAILABLE.

**LETTERS**

- (2) TWO SETS OF ALUMINUM PAN CHANNEL LETTERS.
- .040 ALUMINUM 5" DEEP RETURNS PAINT RED SATIN.
- .063 ALUMINUM BACKS.

- 3/16" RED ACRYLIC FACES #211-1
- 1" RED JEWELITE TRIM CAP

RED L.E.D. ILLUMINATION / REMOTE POWER PACKS / 120 VOLT.  
MOUNT FLUSH.

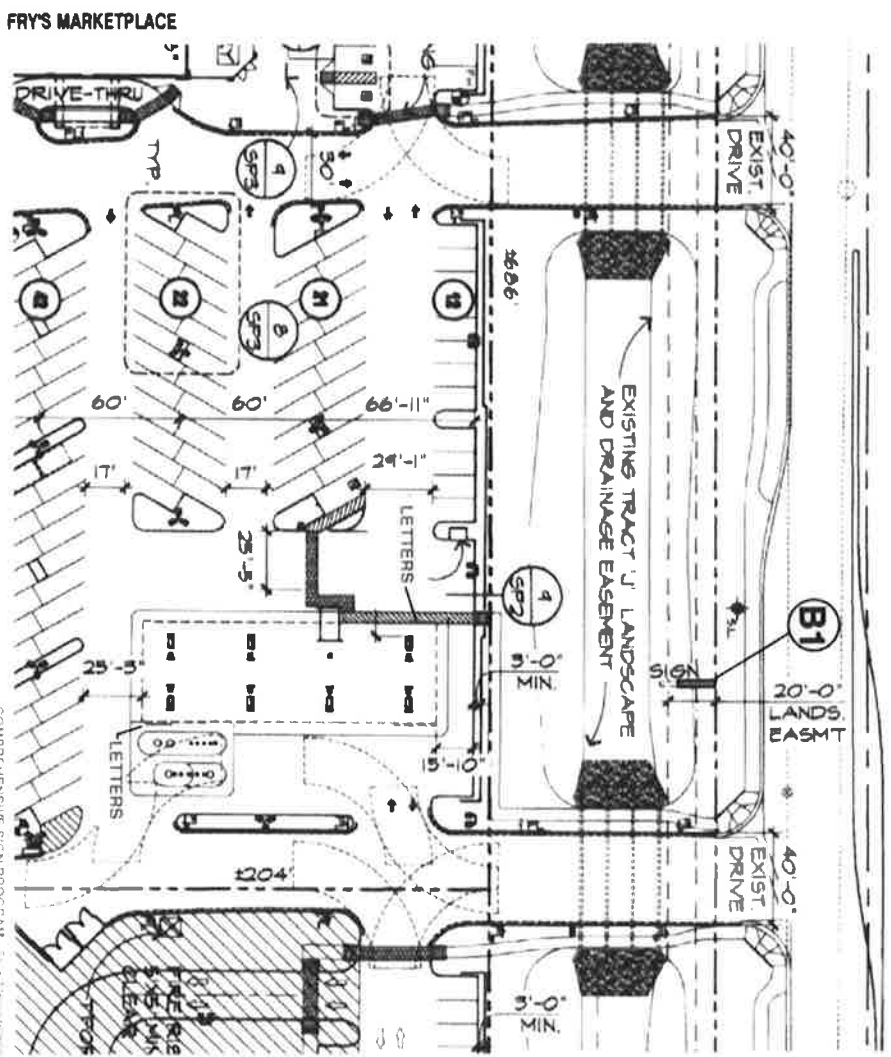
NOTE: LETTERS DRAWS 3 AMPS ON A 20 AMP CIRCUIT.  
120 VOLT PRIMARY POWER.

**SQUARE FOOTAGE**  
LETTERS: 6.63 each

DATE: 11/11/11  
DRAWN BY: [Signature]  
CHECKED BY: [Signature]



EAST CHANDLER HEIGHTS ROAD



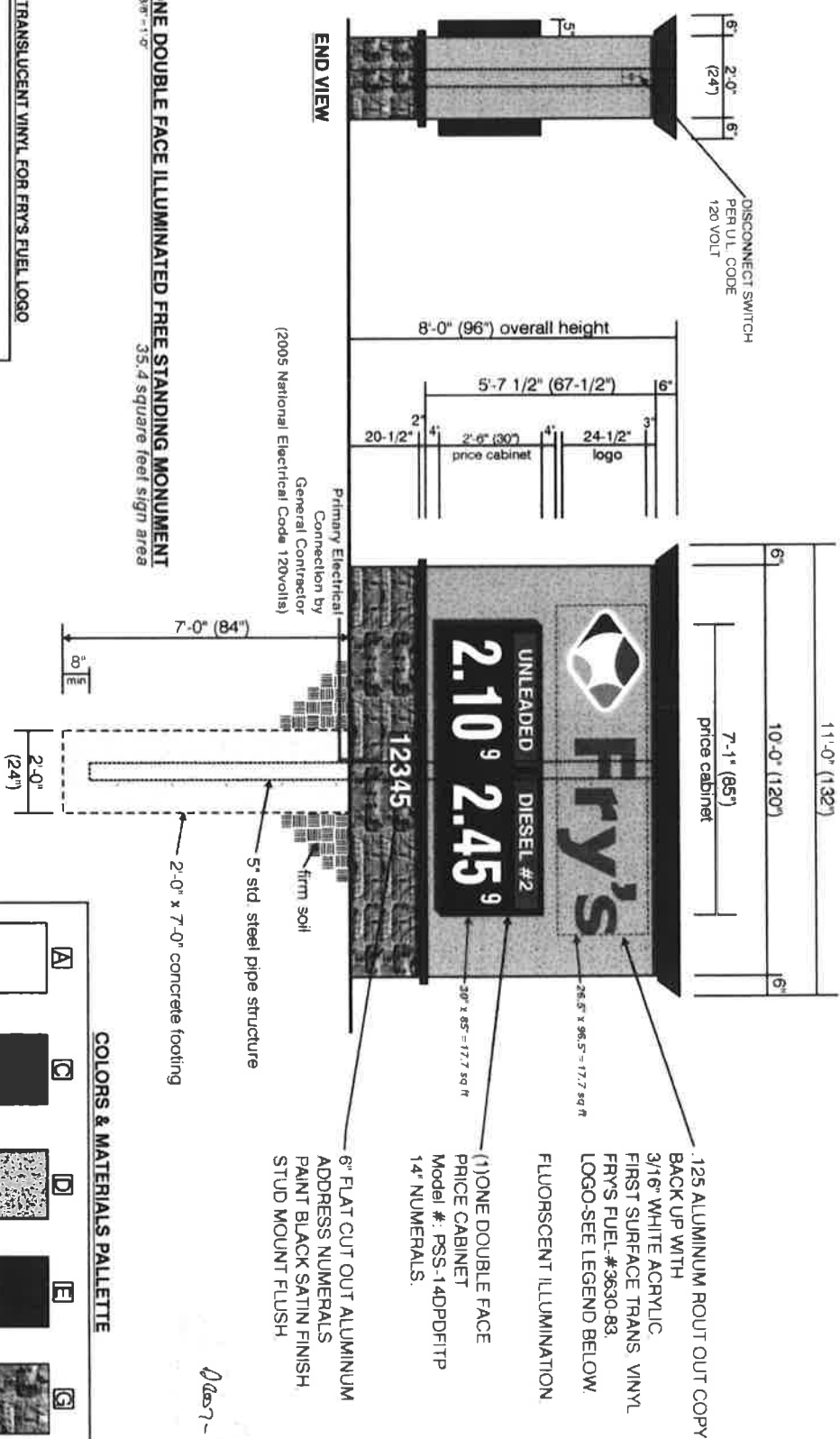
SITE PLAN not to scale

2/10/2017  
12/27-1/25/17

COMPREHENSIVE SIGN PROGRAM







**B1 (1) ONE DOUBLE FACE ILLUMINATED FREE STANDING MONUMENT**  
 Scale: 3/8" = 1'-0"  
 35.4 square feet sign area

**3M TRANSLUCENT VINYL FOR FRY'S FUEL LOGO**

|             |               |                |               |                 |
|-------------|---------------|----------------|---------------|-----------------|
| RED #230-83 | AQUA #230-246 | YELLOW #230-74 | BLUE #230-157 | SILVER #230-121 |
|-------------|---------------|----------------|---------------|-----------------|

**NOTE: ASA Engineering by**  
 2006 Edition of the International Building Code.

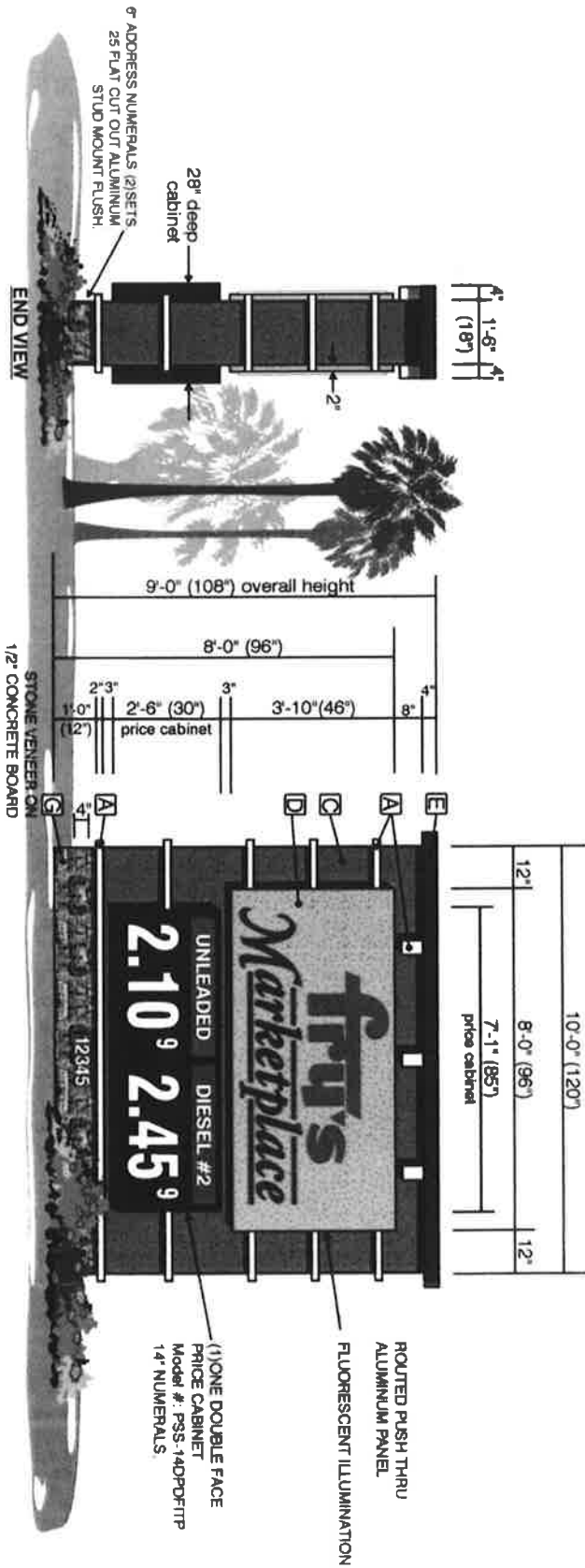
**COLORS & MATERIALS PALLETTE**

|          |   |          |  |          |  |          |  |          |   |
|----------|---|----------|--|----------|--|----------|--|----------|---|
| <b>A</b> | ICI Paint<br>Color Name: 6091<br>satin finish | <b>C</b> | ICI Paint<br>Color Name: A1819<br>medium matte | <b>D</b> | ICI Paint<br>Color Name: A0730<br>medium matte | <b>E</b> | ICI Paint<br>Color Name: A0835<br>satin finish | <b>G</b> | Composite Stone<br>Finish: "Carnegie Monument"<br>"Carnegie Monument" |
|----------|---|----------|--|----------|--|----------|--|----------|---|

NEW FINISH COMBINATIONS AND COLORS OF FINISHES ARE SUBJECT TO CHANGE WITHOUT NOTICE.

- 125 ALUMINUM ROUT OUT COPY BACK UP WITH 3/16" WHITE ACRYLIC FIRST SURFACE TRANS VINYL FRY'S FUEL #3630-83. LOGO-SEE LEGEND BELOW.
- FLUORESCENT ILLUMINATION
- (1) ONE DOUBLE FACE PRICE CABINET Model #: PSS-14DPDFITP 14" NUMERALS.
- 6" FLAT CUT OUT ALUMINUM ADDRESS NUMERALS PAINT BLACK SATIN FINISH STUD MOUNT FLUSH

*0607-08 S*



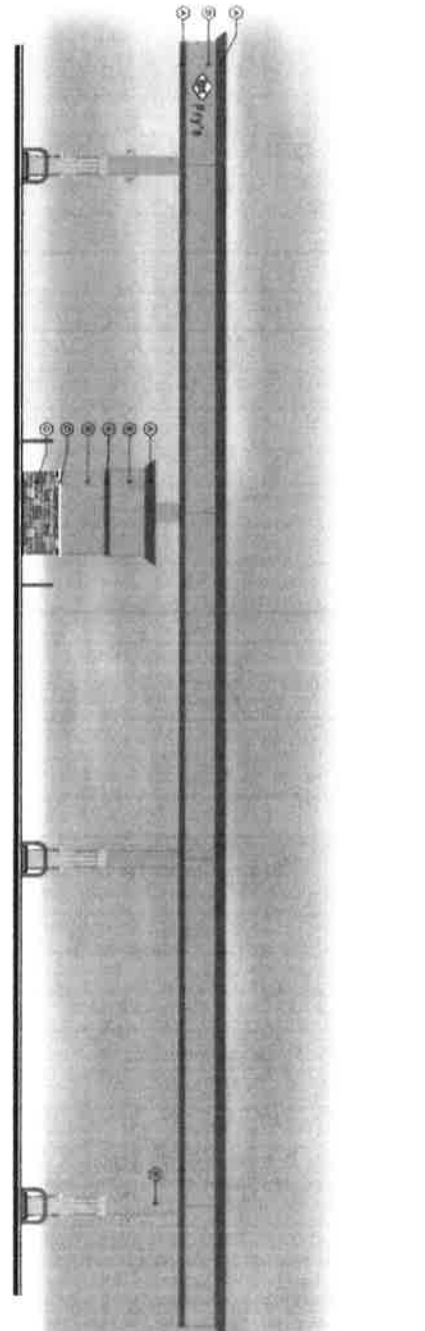
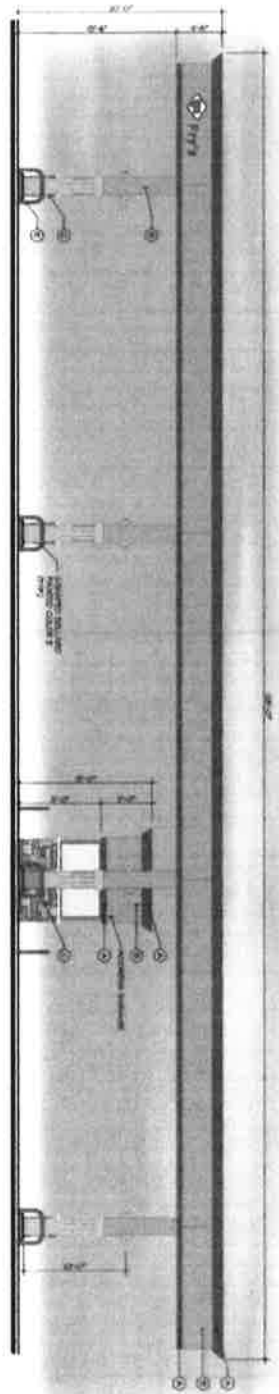
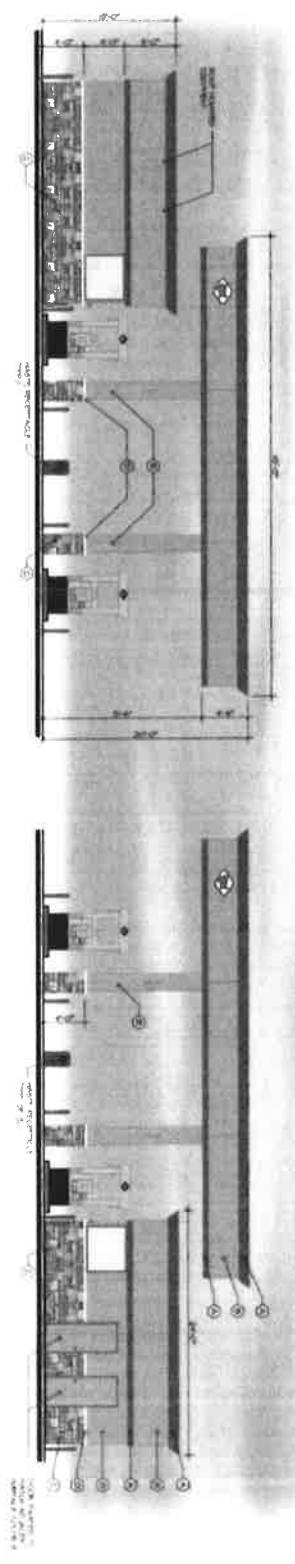
**COLORS & MATERIALS PALLETTE**

|          |  |          |   |          |  |          |  |          |  |
|----------|--|----------|---|----------|--|----------|--|----------|--|
| <b>A</b> | ICI Paint<br>"Opulent"<br>A001<br>satin finish | <b>C</b> | ICI Paint<br>"Tuscan Vibe"<br>A1818<br>medium matte<br>matte finish | <b>D</b> | ICI Paint<br>"Grand Canyon"<br>A0738<br>medium matte<br>matte finish | <b>E</b> | ICI Paint<br>"Candover"<br>A0488<br>satin finish | <b>G</b> | Concrete Stone<br>French Country Villa<br>"Caramel Mountain" |
|----------|--|----------|---|----------|--|----------|--|----------|--|

**(1) ONE DOUBLE FACE INTERNALLY ILLUMINATED MAIN ID DISPLAY**  
Scale: 3/8"=1'-0"  
48.36 square feet

Blas - GA S





| SYMBOL | DESCRIPTION                  | NOTES              |
|--------|------------------------------|--------------------|
| 1      | Service Counter              | See Section 10100  |
| 2      | Shelving                     | See Section 21000  |
| 3      | Display Case                 | See Section 22000  |
| 4      | Refrigerated Display Case    | See Section 23000  |
| 5      | Refrigerated Freezer         | See Section 24000  |
| 6      | Refrigerated Storage         | See Section 25000  |
| 7      | Refrigerated Walk-In Cooler  | See Section 26000  |
| 8      | Refrigerated Walk-In Freezer | See Section 27000  |
| 9      | Refrigerated Storage         | See Section 28000  |
| 10     | Refrigerated Storage         | See Section 29000  |
| 11     | Refrigerated Storage         | See Section 30000  |
| 12     | Refrigerated Storage         | See Section 31000  |
| 13     | Refrigerated Storage         | See Section 32000  |
| 14     | Refrigerated Storage         | See Section 33000  |
| 15     | Refrigerated Storage         | See Section 34000  |
| 16     | Refrigerated Storage         | See Section 35000  |
| 17     | Refrigerated Storage         | See Section 36000  |
| 18     | Refrigerated Storage         | See Section 37000  |
| 19     | Refrigerated Storage         | See Section 38000  |
| 20     | Refrigerated Storage         | See Section 39000  |
| 21     | Refrigerated Storage         | See Section 40000  |
| 22     | Refrigerated Storage         | See Section 41000  |
| 23     | Refrigerated Storage         | See Section 42000  |
| 24     | Refrigerated Storage         | See Section 43000  |
| 25     | Refrigerated Storage         | See Section 44000  |
| 26     | Refrigerated Storage         | See Section 45000  |
| 27     | Refrigerated Storage         | See Section 46000  |
| 28     | Refrigerated Storage         | See Section 47000  |
| 29     | Refrigerated Storage         | See Section 48000  |
| 30     | Refrigerated Storage         | See Section 49000  |
| 31     | Refrigerated Storage         | See Section 50000  |
| 32     | Refrigerated Storage         | See Section 51000  |
| 33     | Refrigerated Storage         | See Section 52000  |
| 34     | Refrigerated Storage         | See Section 53000  |
| 35     | Refrigerated Storage         | See Section 54000  |
| 36     | Refrigerated Storage         | See Section 55000  |
| 37     | Refrigerated Storage         | See Section 56000  |
| 38     | Refrigerated Storage         | See Section 57000  |
| 39     | Refrigerated Storage         | See Section 58000  |
| 40     | Refrigerated Storage         | See Section 59000  |
| 41     | Refrigerated Storage         | See Section 60000  |
| 42     | Refrigerated Storage         | See Section 61000  |
| 43     | Refrigerated Storage         | See Section 62000  |
| 44     | Refrigerated Storage         | See Section 63000  |
| 45     | Refrigerated Storage         | See Section 64000  |
| 46     | Refrigerated Storage         | See Section 65000  |
| 47     | Refrigerated Storage         | See Section 66000  |
| 48     | Refrigerated Storage         | See Section 67000  |
| 49     | Refrigerated Storage         | See Section 68000  |
| 50     | Refrigerated Storage         | See Section 69000  |
| 51     | Refrigerated Storage         | See Section 70000  |
| 52     | Refrigerated Storage         | See Section 71000  |
| 53     | Refrigerated Storage         | See Section 72000  |
| 54     | Refrigerated Storage         | See Section 73000  |
| 55     | Refrigerated Storage         | See Section 74000  |
| 56     | Refrigerated Storage         | See Section 75000  |
| 57     | Refrigerated Storage         | See Section 76000  |
| 58     | Refrigerated Storage         | See Section 77000  |
| 59     | Refrigerated Storage         | See Section 78000  |
| 60     | Refrigerated Storage         | See Section 79000  |
| 61     | Refrigerated Storage         | See Section 80000  |
| 62     | Refrigerated Storage         | See Section 81000  |
| 63     | Refrigerated Storage         | See Section 82000  |
| 64     | Refrigerated Storage         | See Section 83000  |
| 65     | Refrigerated Storage         | See Section 84000  |
| 66     | Refrigerated Storage         | See Section 85000  |
| 67     | Refrigerated Storage         | See Section 86000  |
| 68     | Refrigerated Storage         | See Section 87000  |
| 69     | Refrigerated Storage         | See Section 88000  |
| 70     | Refrigerated Storage         | See Section 89000  |
| 71     | Refrigerated Storage         | See Section 90000  |
| 72     | Refrigerated Storage         | See Section 91000  |
| 73     | Refrigerated Storage         | See Section 92000  |
| 74     | Refrigerated Storage         | See Section 93000  |
| 75     | Refrigerated Storage         | See Section 94000  |
| 76     | Refrigerated Storage         | See Section 95000  |
| 77     | Refrigerated Storage         | See Section 96000  |
| 78     | Refrigerated Storage         | See Section 97000  |
| 79     | Refrigerated Storage         | See Section 98000  |
| 80     | Refrigerated Storage         | See Section 99000  |
| 81     | Refrigerated Storage         | See Section 100000 |

PA08-62

ELEV



NEW GAS STATION FOR  
**FRY'S**  
 8700 CHANDLER HIGHWAY ROAD & HOLLEY ROAD  
 GILBERT, ARIZONA





APPROVED PLANS  
Design Review Board

Case # 0207-68

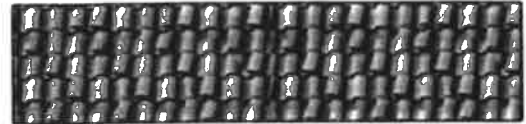
Date 7/19/07

SWC CHANDLER HEIGHTS ROAD & HIGLEY ROAD  
GILBERT, ARIZONA

SUBJECT TO CONDITIONS OF APPROVAL

**ROOFING**

Momer Lifetime  
Boosted Barcelona  
"California Mission Blend" TBEC86404



**STONE VENEER**

Coronado Stone  
French Country Villa Stone  
"Carmel Mountain"



**E.I.F.S. ON FOAM**

ICI Paints  
"Ophelia" #A0084

**E.I.F.S. ON FOAM**

ICI Paints  
"Golden Needles" #A0734



**E.I.F.S. ON FOAM**

ICI Paints  
"Beacon Hill" #A1819



**E.I.F.S. ON FOAM**

ICI Paints  
"Grand Canyon" #A0733



**E.I.F.S. ON FOAM**

ICI Paints  
"Cordovan" #A0483

