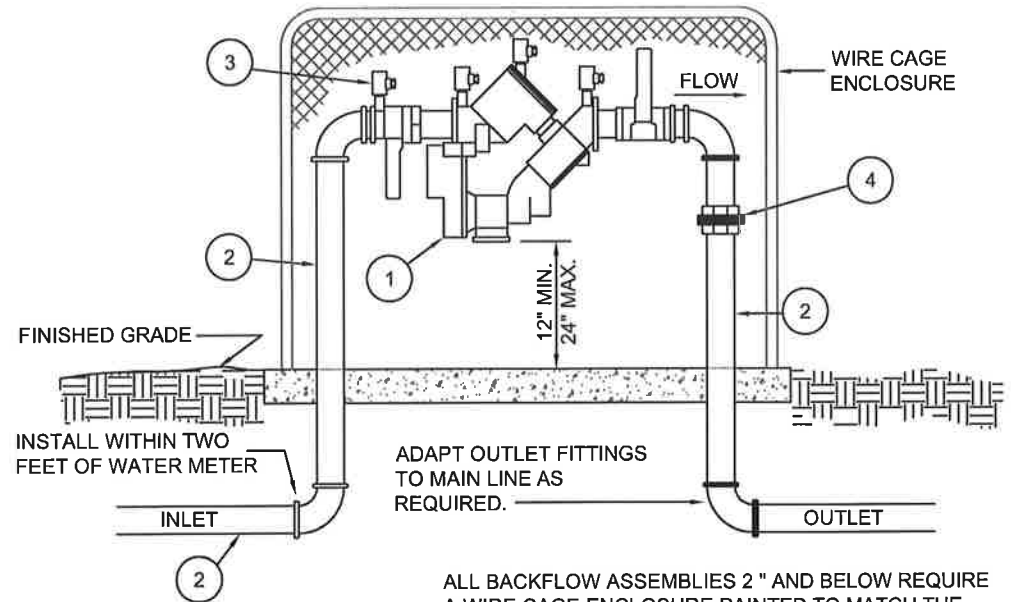


LIST OF MATERIALS:

- ① APPROVED REDUCED PRESSURE PRINCIPLE BACKFLOW PREVENTER ASSEMBLY, BALL VALVES INCLUDED.
- ② PIPING SHALL BE TYPE "K" HARD COPPER (3/4" THRU 2 1/2") USING LEAD-FREE SOLDER. 3" OR LARGER TO BE D.I.P..
- ③ BRASS FLARED TEST FITTINGS ARE REQUIRED ON ALL TEST COCKS
- ④ BRASS OR COPPER UNION (INSTALL ON DISCHARGE SIDE).
- ⑤ HEIGHT REQUIREMENTS FOR ASSEMBLIES (12" MIN. 18" MAX.).



ALL BACKFLOW ASSEMBLIES 2" AND BELOW REQUIRE A WIRE CAGE ENCLOSURE PAINTED TO MATCH THE PRIMARY BUILDING COLOR

GENERAL NOTES

1. CONTACT THE TOWN OF GILBERT BACKFLOW PREVENTION DEPARTMENT FOR THE MOST CURRENT LIST OF APPROVED BACKFLOW PREVENTION ASSEMBLIES.
2. ASSEMBLY SHALL BE APPROVED BY U.S.C. FOUNDATION FOR CROSS CONNECTION AND HYDRAULIC RESEARCH.
3. ABOVE GROUND INSTALLATIONS SHALL BE PROTECTED BY GUARD POSTS. SEE DETAIL GIL-359.
4. ASSEMBLY SHALL BE INSTALLED LEVEL AND NOT IN A FLOOD PLAIN.
5. ASSEMBLY SHALL BE TESTED PRIOR TO BEING ACCEPTED. (CONTACT T.O.G. BF DEPT. FOR LIST OF CERTIFIED TESTERS.).
6. ASSEMBLY SHALL NOT BE INSTALLED ANY CLOSER THAN 24" FROM A WALL OR OBSTRUCTION (IF TEST COCKS FACE THE WALL) OR 12" FROM A WALL (IF TEST COCKS FACE AWAY).
7. CONCRETE SUPPORT PAD SHALL BE A MINIMUM OF 18" WIDE BY LENGTH OF PRESSURE ASSEMBLY.
8. FINISHED GRADE UNDERNEATH ASSEMBLY SHALL BE AT 95% COMPACTION.
9. ASSEMBLY SHALL NOT BE PLACED FARTHER THAN 2' FROM THE WATER METER.
10. PIPE CONNECTION BETWEEN BACKFLOW ASSEMBLY AND METER SHALL BE OF TYPE "K" COPPER.
11. NO LESS THAN 36" OF COPPER SHALL EXIST DOWNSTREAM OF BACKFLOW.
12. EPA-SWDA SECTION 1417(d), AMENDED 1-4-2014: ALL (WET) DOMESTIC BRASS PLUMBING FIXTURES NOT LIMITED TO BACKFLOW PREVENTION ASSEMBLIES SHALL CONTAIN NO GREATER THAN <0.25% TOTAL LEAD CONTENT.



STANDARD
DETAIL

2" AND SMALLER REDUCED PRESSURE PRINCIPLE ASSEMBLY

APPROVED

TOWN ENGINEER

DATE

DETAIL No.
GIL-350