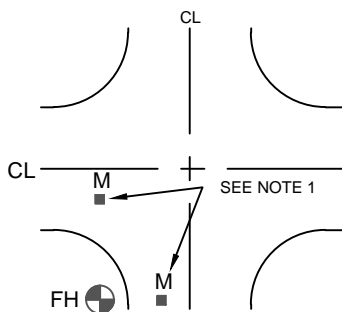
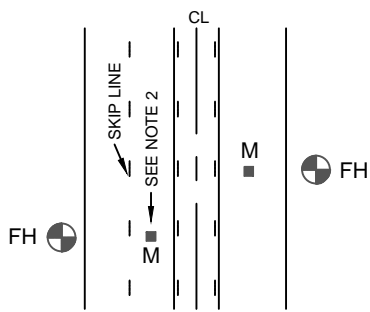


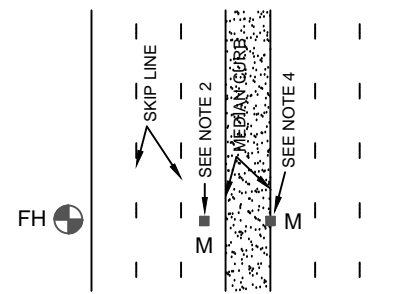
MIDBLOCK LOCAL



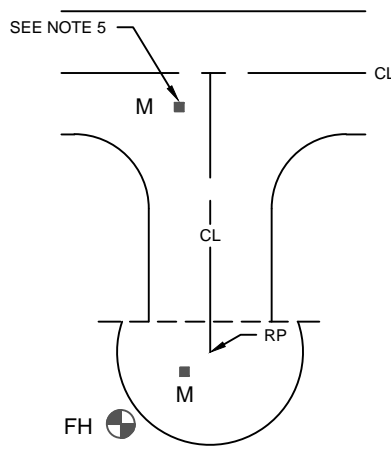
LOCAL CROSS INTERSECTION



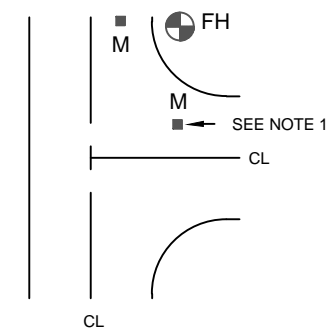
MIDBLOCK WITH CENTER LANE OR SKIP LINES



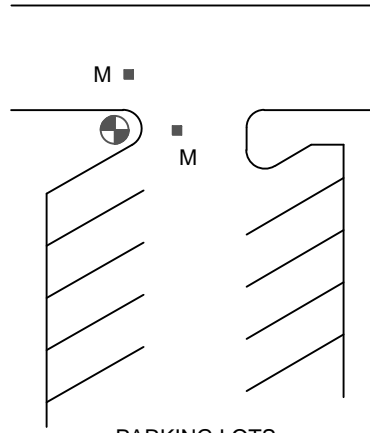
MIDBLOCK WITH RAISED MEDIAN



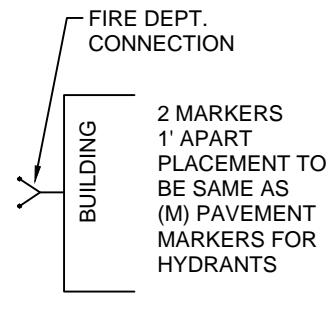
CUL-DE-SAC STREET



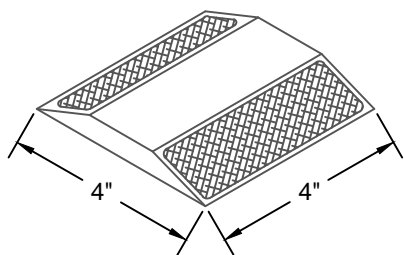
LOCAL 'T' INTERSECTION



PARKING LOTS



FIRE DEPT. CONNECTION



(M) PAVEMENT MARKER
(2-WAY REFLECTIVE BLUE)

Notes:

1. LOCATE PAVEMENT MARKER IN CENTER OF TRAVEL LANE AND ALIGN WITH HYDRANT.
2. FOR MULTIPLE LANE ROADS LOCATE PAVEMENT MARKER IN LEFT MOST THROUGH TRAFFIC LANE.
3. ADJUST MARKER LOCATION TO BE LOCATED OUTSIDE OF ANY DELINEATED CROSSWALK AREA.
4. FOR HYDRANT LOCATED ON FAR SIDE OF RAISED MEDIAN, LOCATE PAVEMENT MARKER ON TOP OF MEDIAN CURB ALIGNED WITH HYDRANT.
5. OMIT FROM CUL-DE-SAC GREATER THAN 250' IN LENGTH.
6. FIRE HYDRANT PAVEMENT MARKER SHALL BE 2-WAY REFLECTIVE BLUE: 3M PSA-295-2B, OR APPROVED EQUAL.